

HANDOUT 1

Chronic Wasting Disease in Arkansas

Prepared by Jennifer R. Ballard, DVM, PhD

State Wildlife Veterinarian

Jennifer.Ballard@agfc.ar.gov

Overview:

- Chronic Wasting Disease (CWD) is a fatal, neurologic disease that affects members of the deer (cervid) family. It is caused by a misfolded form of the prion protein.
- CWD was detected in Arkansas in February 2016. Since that time:
 - 11,693 samples have been tested (As of June 30, 2018)
 - 370 positive cases (356 white-tailed deer; 14 elk) have been detected (As of June 30, 2018)
 - CWD has been detected in white-tailed deer and elk in 10 counties
- AGFC's management goals for CWD are:
 - To slow the spread of CWD to new areas of the state
 - To reduce amplification of the disease in areas where it already occurs
- These goals are pursued via regulatory measures, public education, and research
- Monitoring of the CWD Management Zone is conducted through testing of hunter-harvested deer and elk.
- Statewide, weighted surveillance is conducted through roadkill, taxidermist collections, and target (sick) animal testing.

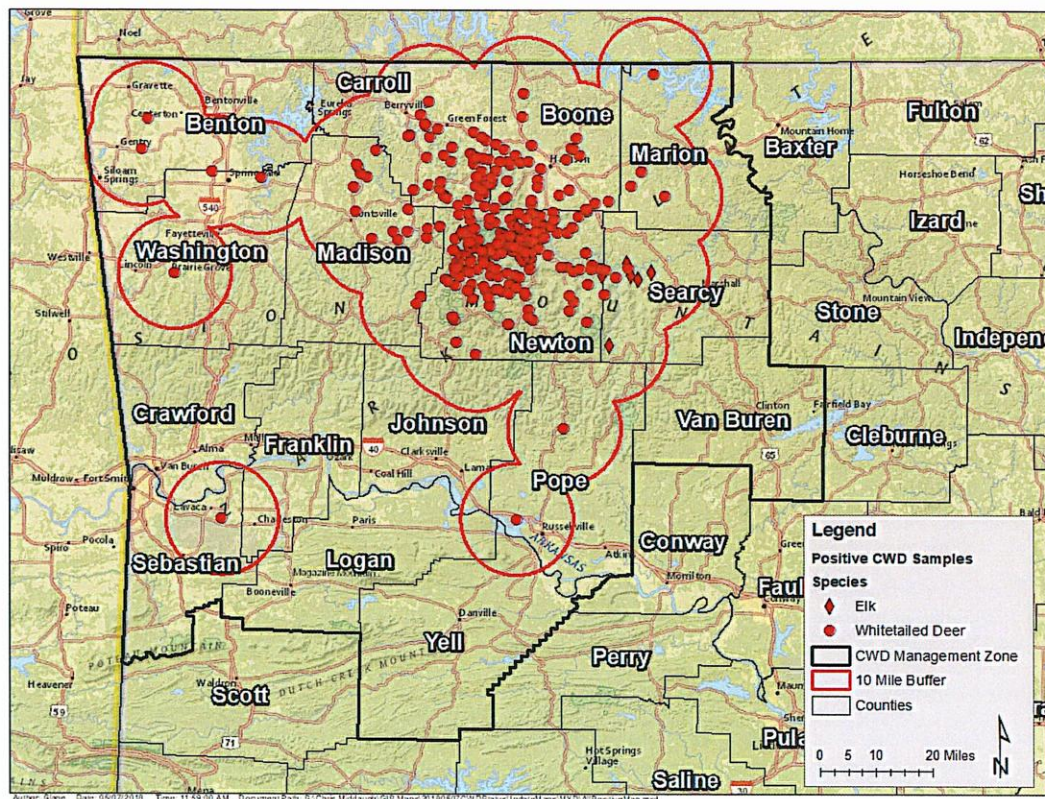
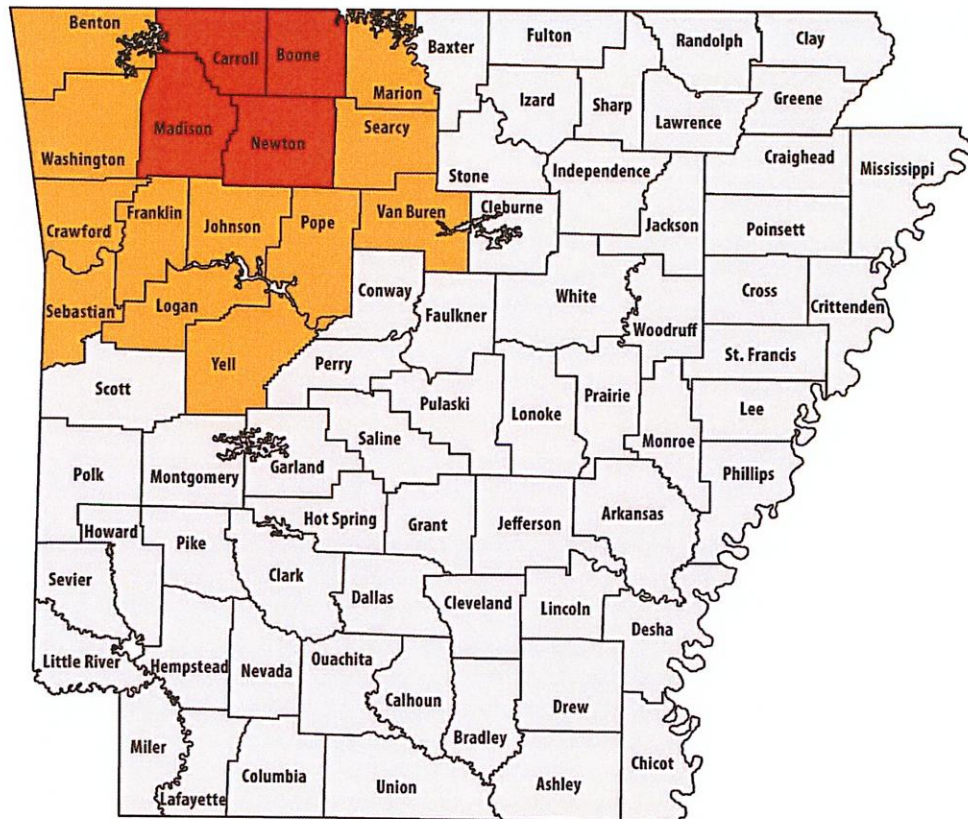


Figure 1. Distribution of CWD positive white-tailed deer and elk as of May 1, 2018.

Update for 2018-2019:

- The CWD Management Zone has been expanded to include Benton, Crawford, Franklin, Sebastian, and Washington Counties.
- A tiered carcass movement system has been implemented to slow the spread of this disease.



- Harvest strategies have been modified, including increased bag limits and removal of the 3-point rule within the CWD Management Zone, to reduce disease transmission and slow disease spread.
- Research efforts include an ongoing genetic assessment of white-tailed deer populations and a proposed assessment of the effects of CWD on white-tailed deer population dynamics.

For additional information on Arkansas's CWD program and detailed information concerning CWD testing opportunities for the 2018-19 deer season, please visit www.agfc.com/cwd

