

Scott E. Bennett, P.E.
Director



Act 1, Third Extraordinary Session, 2016
Highway Commission Review & Advisory Subcommittee
October 19, 2017

Agenda Item C

Arkansas Highway Commission July 26, 2017 Meeting



Strategic Plan (2017-2022)

- ✓ **Mission Statement**
- ✓ **Vision Statement**
- ✓ **Core Values**
- ✓ **Strategic Goals**
 - Objectives
 - Strategies



Mission Statement

Provide safe and efficient transportation solutions to support Arkansas' economy and enhance the quality of life for generations to come.

Vision Statement

Continue to preserve and improve Arkansas' transportation system emphasizing safety, efficiency, quality, trust, and stewardship with a public service focused workforce.

Core Values

Safety

- Safety first in all we do

Public Service

- Focus on the greater good

Teamwork

- One vision through collaboration and communication

Quality

- Deliver reliable transportation solutions

Integrity

- Commitment to ethics and transparency

Efficiency

- Achieve maximum benefit through fiscal responsibility

Strategic Goals

- ✓ Provide safe and efficient transportation solutions
- ✓ Accomplish our mission with a focus on stewardship
- ✓ Champion transportation solutions that promote quality of life and economic development
- ✓ Continually improve through employee engagement
- ✓ Maximize external and internal customer satisfaction



ARKANSAS

Long Range Intermodal Transportation Plan



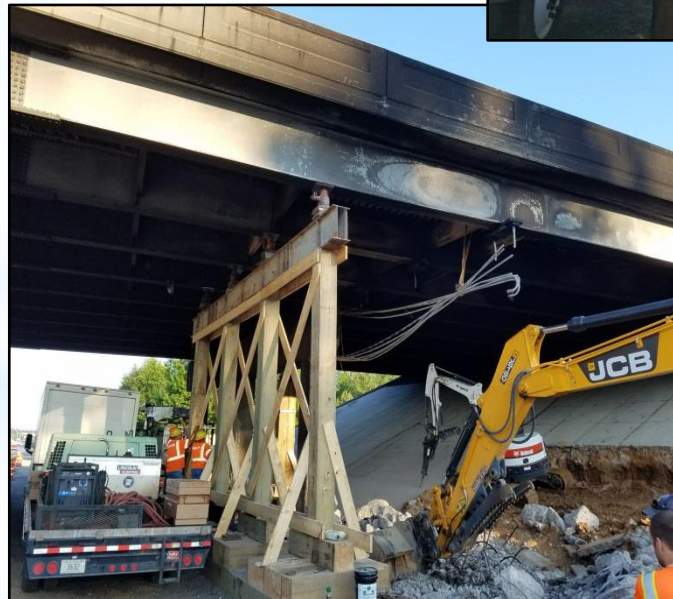
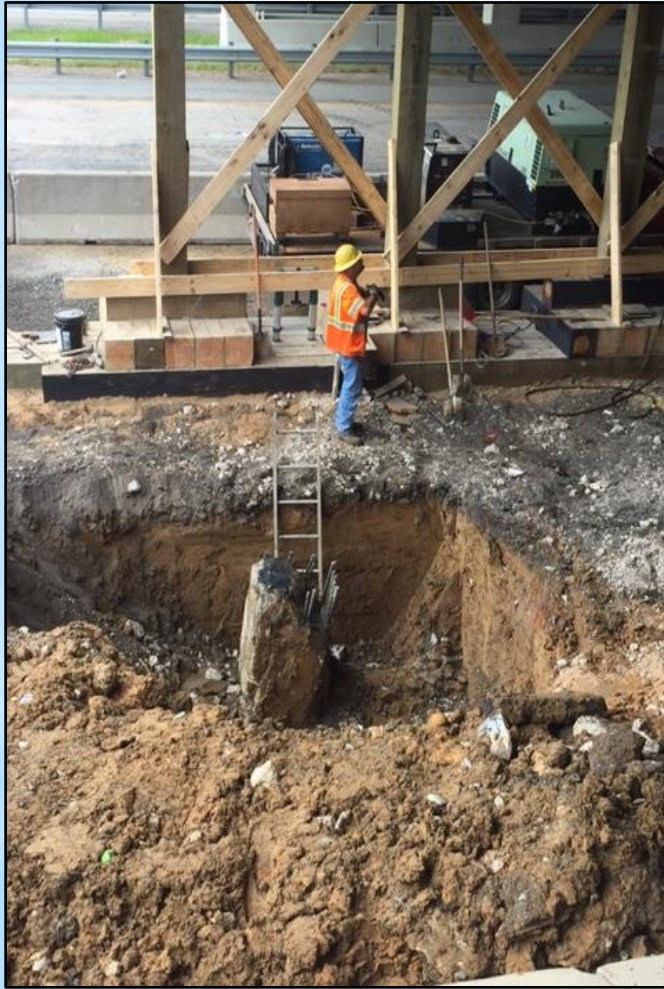
ARKANSAS 2017 STRATEGIC HIGHWAY SAFETY PLAN



Tuesday, June 27



Thursday, June 29



Thursday, July 6



Tuesday, July 11



Appreciation



ACEC Engineering Excellence Awards

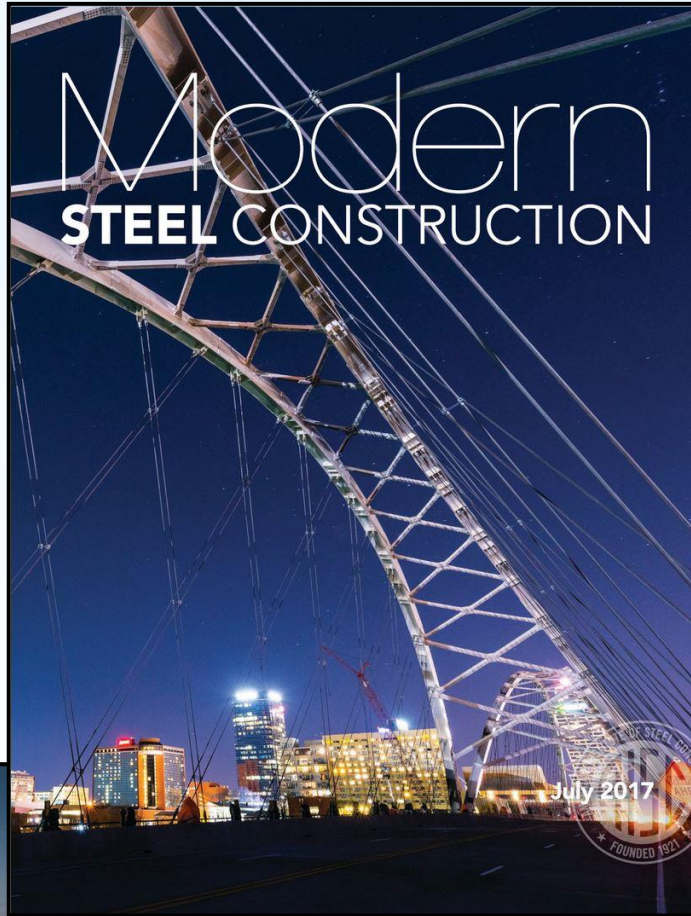
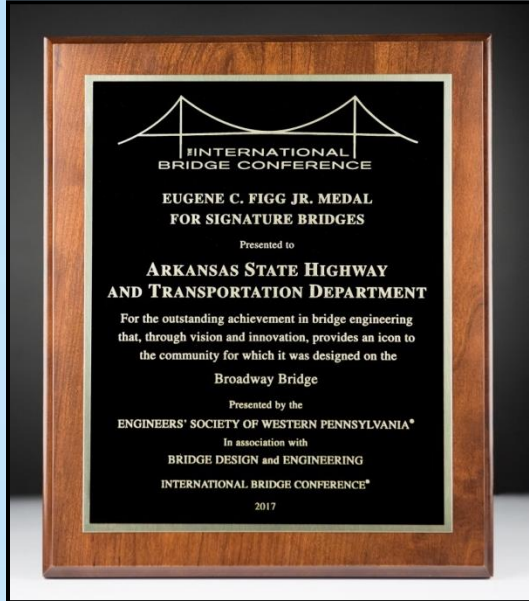
Category E: Environmental



ACEC Engineering Excellence Awards Category H: Grand Conceptor

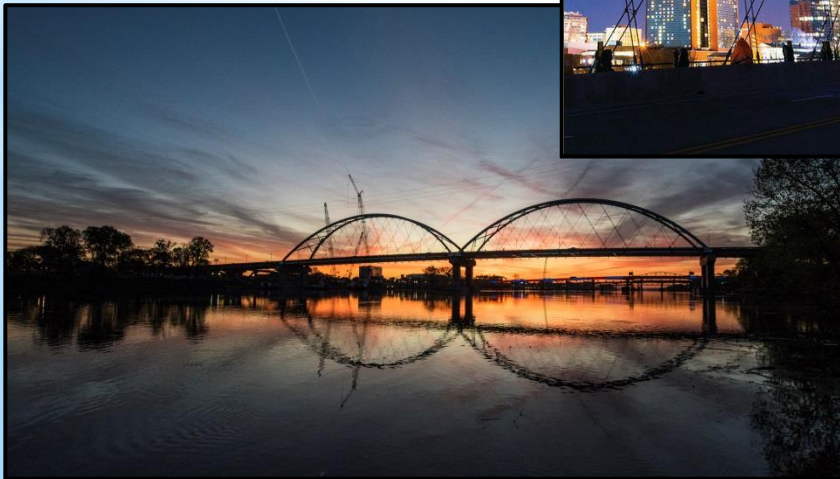
Bridgefarmer & Associates
for
Big Rock Interchange





Completed

**1 Project
\$98.4 Million**



Agenda Item C

Arkansas Highway Commission September 6, 2017 Meeting



ARDOT Partnerships

*Garland County and the City of Hot Springs -
A study of the Highway 270 interchanges with:*

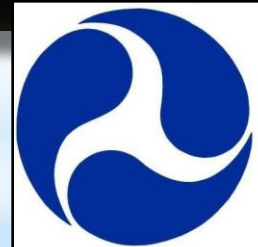
- Highway 270B (Albert Pike)
- Highway 70/70B (Airport Road)
- Highway 88 (Higdon Ferry Road)
- Highway 7 (Central Avenue)

The City of Jonesboro

- Eight projects totaling more than \$50 million

Infrastructure For Rebuilding America (INFRA) Grants

- **Replaces FASTLANE Grants**
- **Key Objectives**
 - ✓ Support Economic Vitality
 - ✓ Leverage Federal Funding
 - ✓ Use Innovative Approaches
 - ✓ Hold Grants Recipients Accountable
- **Applications Due November 2, 2017**
- **Available Amounts**



**U.S. Department
of Transportation**

Infrastructure For Rebuilding America (INFRA) Grants

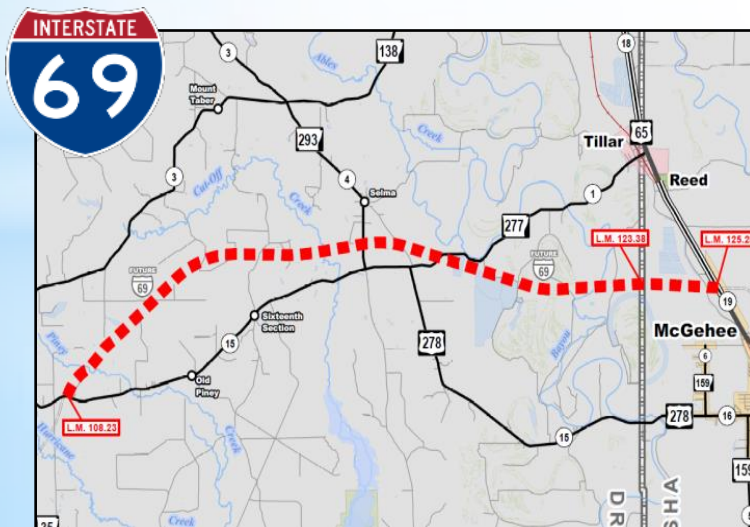
- **Changes to the Existing Program**
- **Freight is a Priority**
- **Rural Areas**
- **Project Readiness**
- **Project Size**



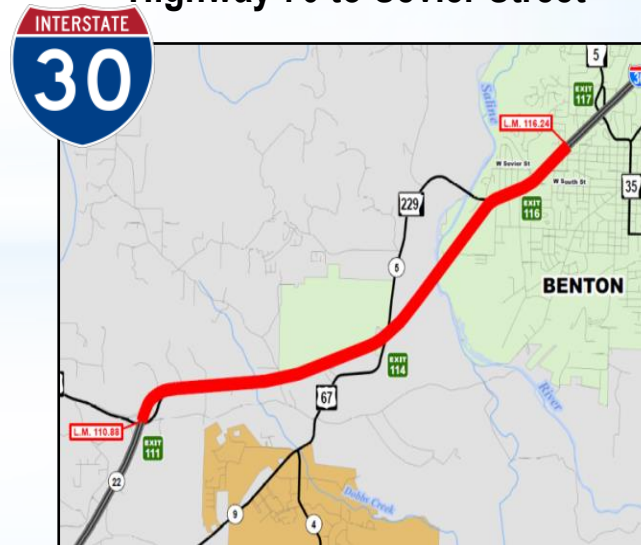
INFRA Grants Applications



Interstate 69



Highway 70 to Sevier Street



Broadway Bridge Awarded America's Transportation Award



<http://AmericasTransportationAwards.org>

TransComm Skills Award – First Runner Up

Matt Barnette, Videographer

Inside IDriveArkansas –
Construction Zone Tutorial



Agenda Item C

Arkansas Highway Commission October 18, 2017 Meeting





STATE FREIGHT PLAN

Executive Summary



ARKANSAS' HIGHWAYS

SPEED LIMIT

REVIEW



September 2017 - DRAFT

Prepared by The Arkansas Department of Transportation.

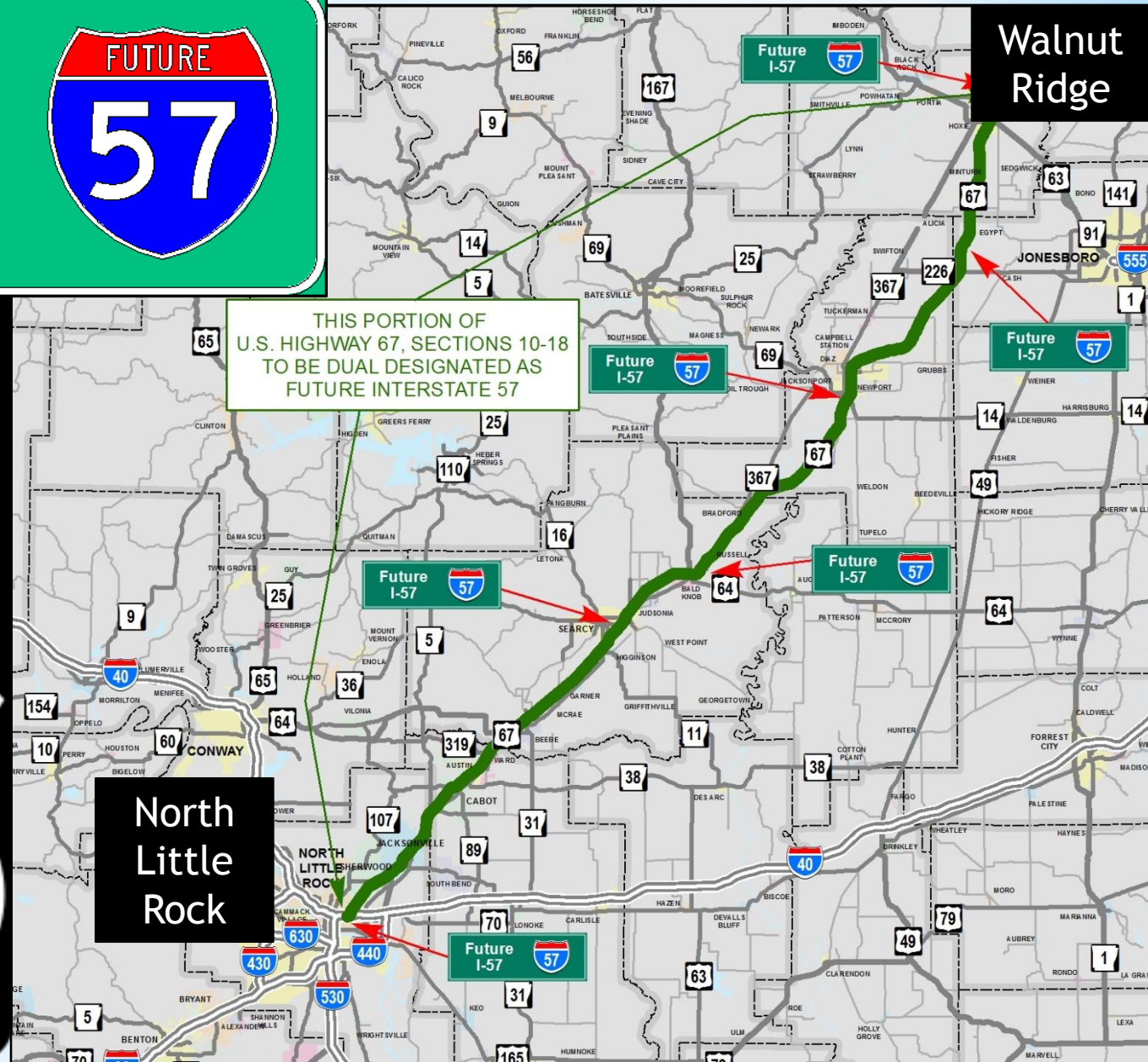
In response to the 91st General Assembly Regular Session Passage of Act 1097 "To Amend the Law Concerning Speed Limits."

Future Interstate 57 / U.S. Highway 67

**FUTURE
I-57**



**High
Priority
Corridor 89**



Federal Highway Funding Issues

- Federal Fiscal Year 2018
- No Budget Agreement
- Continuing Resolution Until December 8th
- Future Uncertainty



Federal Highway Funding Issues

President Trump Abandons His \$1 Trillion Plan

White House Agrees Public-Private Approach Will Not Work

Senate Democrats Announce \$500 Billion Initiative



Federal Highway Funding Issues

- **Administration's Guiding Principles for Infrastructure Initiative**
 - ✓ Targeted Federal Investment
 - ✓ Greater State and Local Investment Overall
 - ✓ Leveraging Non-Federal Investment
 - ✓ Environmental and Permitting Streamlining
- **Four Areas of Major Reform**
 - ✓ Regulatory
 - ✓ Policy
 - ✓ Statutory
 - ✓ Cultural



Possible Ballot Measure

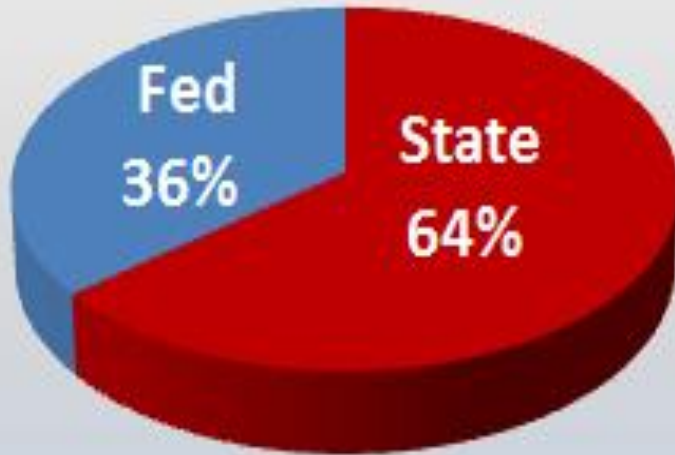
"As to the long-term solutions, it emphasizes that it is difficult to get a referral of this General Assembly out to the voters, and that I hope the leadership of our state and the business community and others **will look at an initiated act that might go on the ballot for a highway program**," he said. "Otherwise, we'll continue to debate the long-term solution in future sessions."

Governor Asa Hutchinson

Federal vs. State Funding

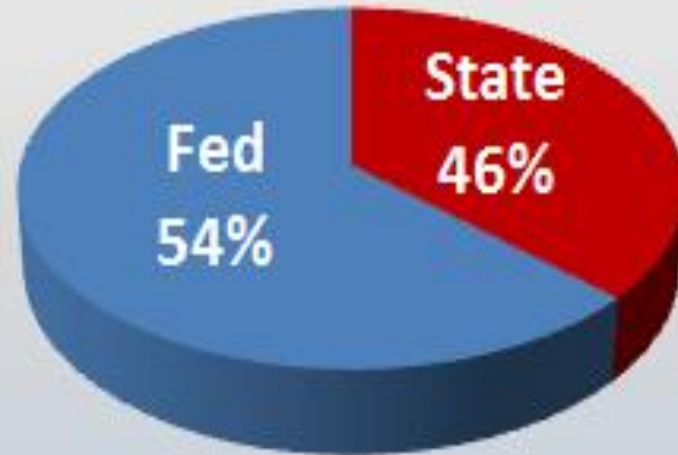
1993

Hwy. Funding Breakdown

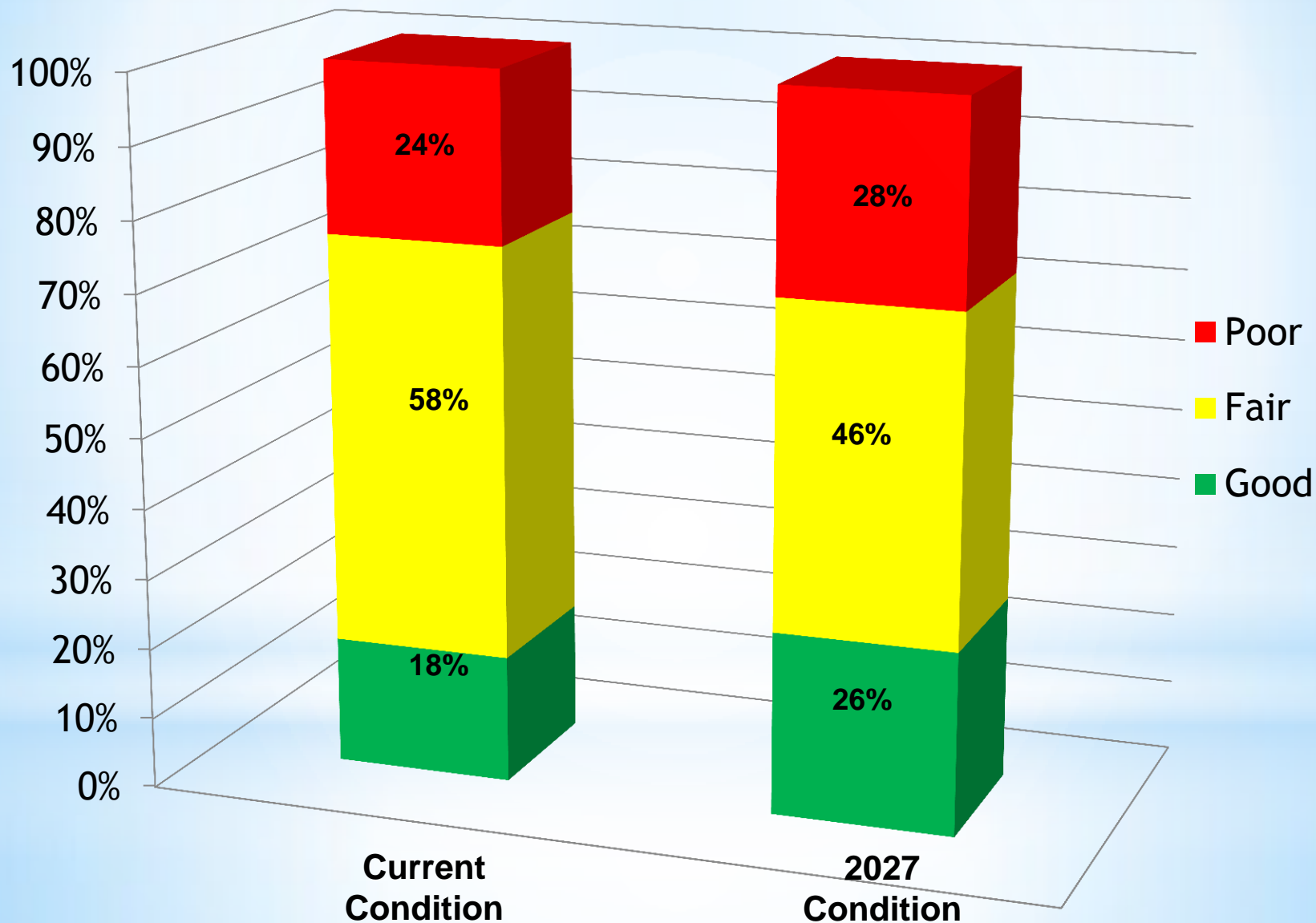


2016

Hwy. Funding Breakdown



All State Highways – Including Interstates



Pay a **Little** Now



Overlay
\$100,000
per lane mile

Pay a **Whole Lot** Later



Reconstruction
\$1,500,000
per lane mile

Citizens Opinion Survey

CITIZENS OPINION SURVEY ON HIGHWAYS IN ARKANSAS

MAIL OR EMAIL RESPONSES TO:
ArDOT
Public Information
P.O. Box 2261
Little Rock, AR 72203
info@ardot.ar.gov

Are you satisfied with the condition of the existing state highway system?

☐ Yes ☐ No

What highways in your area need improvements, and what type of improvements do they need?

Priority 1: _____
Priority 2: _____
Priority 3: _____
Priority 4: _____

If you want better highway conditions, the Arkansas State Highway and Transportation Department will need additional funds. Would you support a new highway program that would generate additional revenue?

☐ Yes ☐ No

Which of the following sources do you recommend be utilized in obtaining additional funds (check all that apply):

- ☐ Increase in gas tax
- ☐ Increase in diesel tax
- ☐ Increase in sales tax (dedicated to highways)
- ☐ Increase in registration fees
- ☐ Add sales tax on wholesale price of motor fuels
- ☐ Transfer existing sales and use tax on motor vehicles and related parts and service (currently collected but not paid to highways)
- ☐ Other: _____

Would you be willing to sign a petition to put a highway revenue proposal on the 2018 general election ballot?

☐ Yes ☐ No

How did you hear about this survey

- ☐ Presentation ☐ TV/Radio/Print ☐ Website/Search Engine
- ☐ Social Media ☐ Family or Friend
- ☐ Other: _____

Optional:

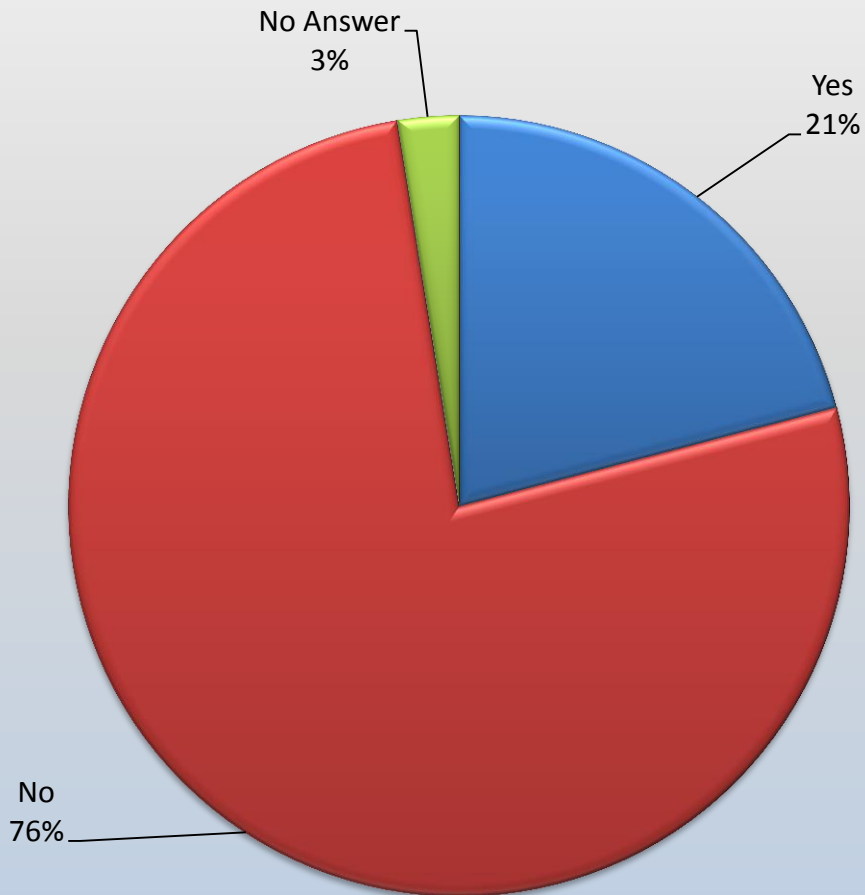
Name: _____
Address: _____
City, State, Zip: _____

Online Form Available Here:

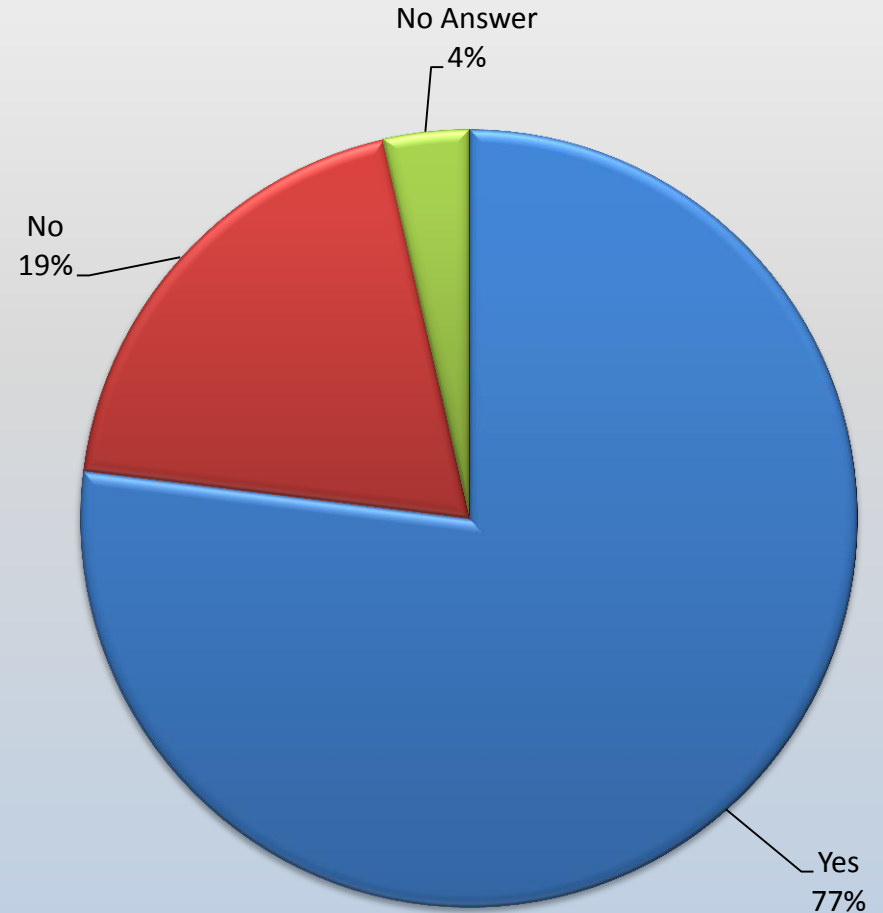


Survey Results

Are you satisfied with the condition of the existing highway system?

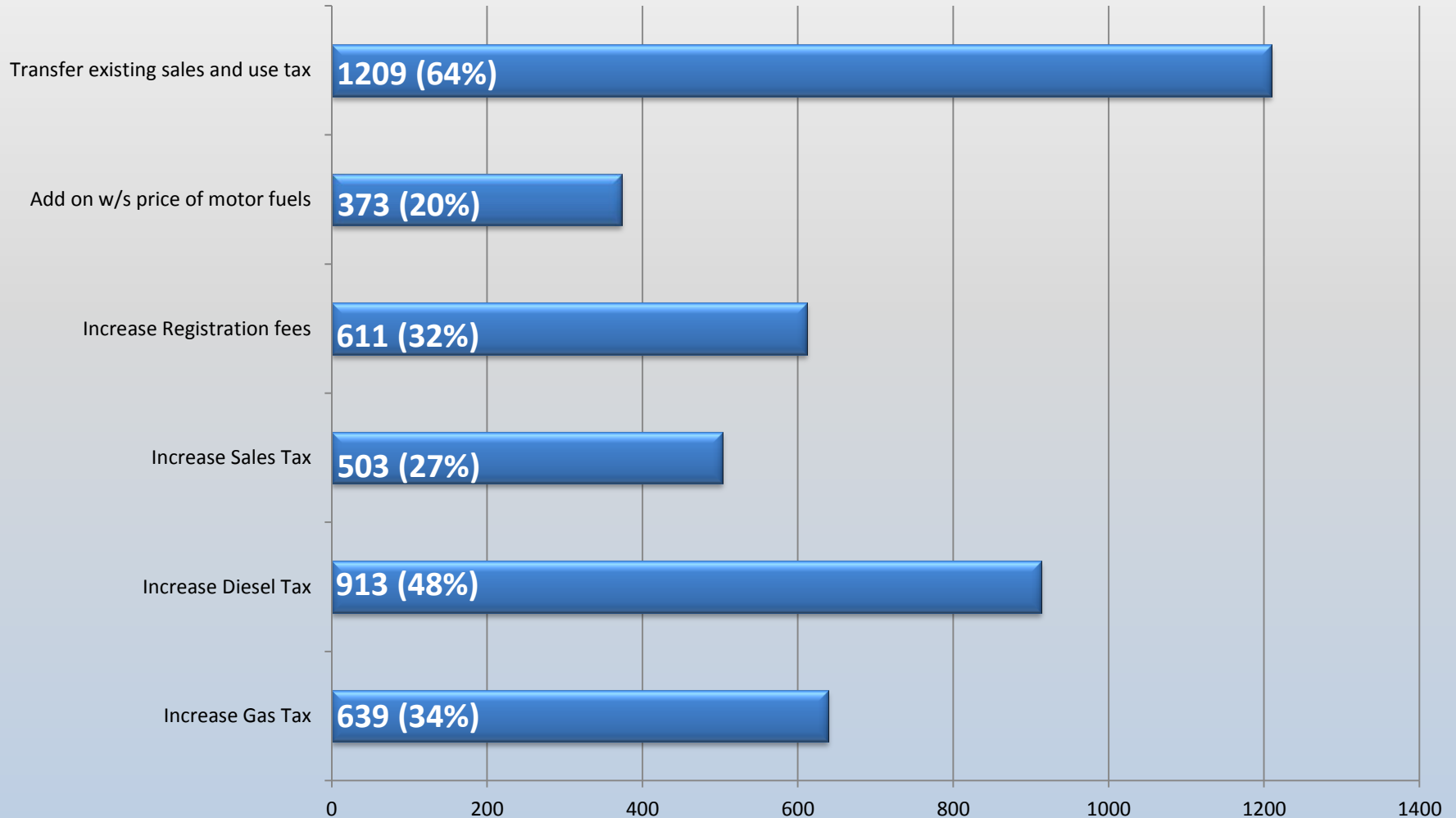


Would you support a new highway program that would generate additional revenue?



Survey Results

Which of the following sources do you recommend be utilized in obtaining additional funds?



Possible 2018 Initiated Act

Scenario 1						
Year	New and Used Vehicles Retail Tire Sales Revenue	10 cent Diesel Tax Increase	6 cent Gas Tax Increase	\$15 Registration Fee Increase	Total Additional to Highway Revenue (70/15/15)	Additional to Department *
	5-Year Phase-In	3-Year Phase-In	3-Year Phase-In	2-Year Phase-In		
(x \$1 Million)						
2020	\$ 73.5	\$ 24.8	\$ 29.6	\$ 21.4	\$ 149.4	\$ 104.5
2021	\$ 150.0	\$ 43.9	\$ 59.7	\$ 43.3	\$ 296.9	\$ 207.8
2022	\$ 229.4	\$ 63.4	\$ 90.4	\$ 43.7	\$ 427.0	\$ 298.9
2023	\$ 312.0	\$ 64.0	\$ 91.3	\$ 44.2	\$ 511.6	\$ 358.1
2024	\$ 397.8	\$ 64.6	\$ 92.3	\$ 44.6	\$ 599.4	\$ 419.6
TOTAL TO THE HIGHWAY FUND IN YEAR 2024					\$ 599.4	\$ 419.6

* This amount reflects a 3.2% deduction for the Central Services Fund. Total net amount is distributed 70% to AHTD, 15% to both Cities and Counties.

Possible 2018 Initiated Act

Scenario 1-A					
Year	New and Used Vehicles Retail Tire Sales Revenue	Add 4.5% Exise Tax to Motor Fuels	\$15 Registration Fee Increase	Total Additional to Highway Revenue (70/15/15)	Additional to Department *
	5-Year Phase-In	3-Year Phase-In	2-Year Phase-In		
	(x \$1 Million)				
2020	\$ 73.5	\$ 55.7	\$ 21.4	\$ 150.6	\$ 105.4
2021	\$ 150.0	\$ 113.6	\$ 43.3	\$ 306.8	\$ 214.8
2022	\$ 229.4	\$ 173.8	\$ 43.7	\$ 447.0	\$ 312.9
2023	\$ 312.0	\$ 177.2	\$ 44.2	\$ 533.5	\$ 373.4
2024	\$ 397.8	\$ 180.8	\$ 44.6	\$ 623.3	\$ 436.3
TOTAL TO THE HIGHWAY FUND IN YEAR 2024				\$ 623.3	\$ 436.3

* This amount reflects a 3.2% deduction for the Central Services Fund. Total net amount is distributed 70% to AHTD, 15% to both Cities and Counties.

Possible 2018 Initiated Act

Scenario 2

Year	New and Used Vehicles Retail Tire Sales Revenue	\$15 Registration Fee Increase	Sales Tax 1/4 cent	Total Additional to Highway Revenue (70/15/15)	Additional to Department *
	5-Year Phase-In	2-Year Phase-In			
	(x \$1 Million)				
2020	\$ 73.5	\$ 21.4		\$ 94.9	\$ 66.5
2021	\$ 150.0	\$ 43.3		\$ 193.3	\$ 135.3
2022	\$ 229.4	\$ 43.7		\$ 273.2	\$ 191.2
2023	\$ 312.0	\$ 44.2		\$ 356.2	\$ 249.4
2024	\$ 397.8	\$ 44.6	\$ 144.1	\$ 586.6	\$ 410.6
TOTAL TO THE HIGHWAY FUND IN YEAR 2024				\$ 586.6	\$ 410.6

* This amount reflects a 3.2% deduction for the Central Services Fund. Total net amount is distributed 70% to AHTD, 15% to both Cities and Counties.

Possible 2018 Initiated Act

Scenario 3

Year	New and Used Vehicles Retail Tire Sales Revenue	5 cent Diesel Tax Increase	2 cent Gas Tax Increase	Sales Tax 1/4 cent	Total Additional to Highway Revenue (70/15/15)	Additional to Department *
	5-Year Phase-In					
	(x \$1 Million)					
2020	\$ 73.5	\$ 31.1	\$ 28.4		\$ 133.0	\$ 93.1
2021	\$ 150.0	\$ 31.4	\$ 28.7		\$ 210.0	\$ 147.0
2022	\$ 229.4	\$ 31.7	\$ 29.0		\$ 290.1	\$ 203.1
2023	\$ 312.0	\$ 32.0	\$ 29.3		\$ 373.3	\$ 261.3
2024	\$ 397.8	\$ 32.3	\$ 29.6	\$ 144.1	\$ 603.9	\$ 422.7
TOTAL TO THE HIGHWAY FUND IN YEAR 2024					\$ 603.9	\$ 422.7

* This amount reflects a 3.2% deduction for the Central Services Fund. Total net amount is distributed 70% to AHTD, 15% to both Cities and Counties.

Possible 2018 Initiated Act

Scenario 3-A

Year	New and Used Vehicles Retail Tire Sales Revenue 5-Year Phase-In	Add 2% Exise Tax to Motor Fuels	Sales Tax 1/4 cent	Total Additional to Highway Revenue (70/15/15)	Additional to Department *
	(x \$1 Million)				
2020	\$ 73.5	\$ 74.2		\$ 147.7	\$ 103.4
2021	\$ 150.0	\$ 75.7		\$ 225.7	\$ 158.0
2022	\$ 229.4	\$ 77.2		\$ 306.7	\$ 214.7
2023	\$ 312.0	\$ 78.8		\$ 390.8	\$ 273.6
2024	\$ 397.8	\$ 80.4	\$ 144.1	\$ 622.3	\$ 435.6
TOTAL TO THE HIGHWAY FUND IN YEAR 2024				\$ 622.3	\$ 435.6

* This amount reflects a 3.2% deduction for the Central Services Fund. Total net amount is distributed 70% to AHTD, 15% to both Cities and Counties.

Possible 2018 Initiated Act

Scenario 4S

Year	New and Used Vehicles Auto Repair, Parts, and Services Retail Tire Sales Revenue	10 cent Diesel Tax Increase	10 cent Gas Tax Increase	\$30 Registration Fee Increase	Total Additional to Highway Revenue (70/15/15)	Additional to Department *
	5-Year Phase-In	3-Year Phase-In	3-Year Phase-In	2-Year Phase-In		
	(x \$1 Million)					
2020	\$ 96.4	\$ 24.8	\$ 59.1	\$ 42.9	\$ 223.3	\$ 156.3
2021	\$ 196.7	\$ 43.9	\$ 104.5	\$ 86.6	\$ 431.7	\$ 302.2
2022	\$ 301.0	\$ 63.4	\$ 150.7	\$ 87.5	\$ 602.6	\$ 421.8
2023	\$ 409.4	\$ 64.0	\$ 152.2	\$ 88.4	\$ 714.0	\$ 499.8
2024	\$ 521.9	\$ 64.6	\$ 153.8	\$ 89.2	\$ 829.6	\$ 580.7
TOTAL TO THE HIGHWAY FUND IN YEAR 2024					\$ 829.6	\$ 580.7

* This amount reflects a 3.2% deduction for the Central Services Fund. Total net amount is distributed 70% to AHTD, 15% to both Cities and Counties.

Possible 2018 Initiated Act

Scenario 4S-A

Year	New and Used Vehicles Auto Repair, Parts, and Services Retail Tire Sales Revenue	Add 5.5% Exise Tax to Motor Fuels	\$30 Registration Fee Increase	Total Additional to Highway Revenue (70/15/15)	Additional to Department *
	5-Year Phase-In	3-Year Phase-In	2-Year Phase-In		
(x \$1 Million)					
2020	\$ 96.4	\$ 74.2	\$ 42.9	\$ 213.5	\$ 149.5
2021	\$ 196.7	\$ 151.4	\$ 86.6	\$ 434.8	\$ 304.3
2022	\$ 301.0	\$ 212.4	\$ 87.5	\$ 600.9	\$ 420.6
2023	\$ 409.4	\$ 216.6	\$ 88.4	\$ 714.3	\$ 500.0
2024	\$ 521.9	\$ 221.0	\$ 89.2	\$ 832.1	\$ 582.5
TOTAL TO THE HIGHWAY FUND IN YEAR 2024				\$ 832.1	\$ 582.5

* This amount reflects a 3.2% deduction for the Central Services Fund. Total net amount is distributed 70% to AHTD, 15% to both Cities and Counties.

Possible 2018 Initiated Act

Scenario 5F

Year	New and Used Vehicles Retail Tire Sales Revenue	5 cent Diesel Tax Increase	3 cent Gas Tax Increase	\$18 Registration Fee Increase	Total Additional to Highway Revenue (70/15/15)	Additional to Department *
	5-Year Phase-In	3-Year Phase-In	3-Year Phase-In	2-Year Phase-In		
	(x \$1 Million)					
2020	\$ 73.5	\$ 12.4	\$ 14.8	\$ 25.7	\$ 126.4	\$ 88.5
2021	\$ 150.0	\$ 25.1	\$ 29.8	\$ 52.0	\$ 256.9	\$ 179.8
2022	\$ 229.4	\$ 31.7	\$ 45.2	\$ 52.5	\$ 358.8	\$ 251.2
2023	\$ 312.0	\$ 32.0	\$ 45.7	\$ 53.0	\$ 442.7	\$ 309.9
2024	\$ 397.8	\$ 32.3	\$ 46.1	\$ 53.5	\$ 529.8	\$ 370.9
TOTAL TO THE HIGHWAY FUND IN YEAR 2024					\$ 529.8	\$ 370.9

* This amount reflects a 3.2% deduction for the Central Services Fund. Total net amount is distributed 70% to AHTD, 15% to both Cities and Counties.

Possible 2018 Initiated Act

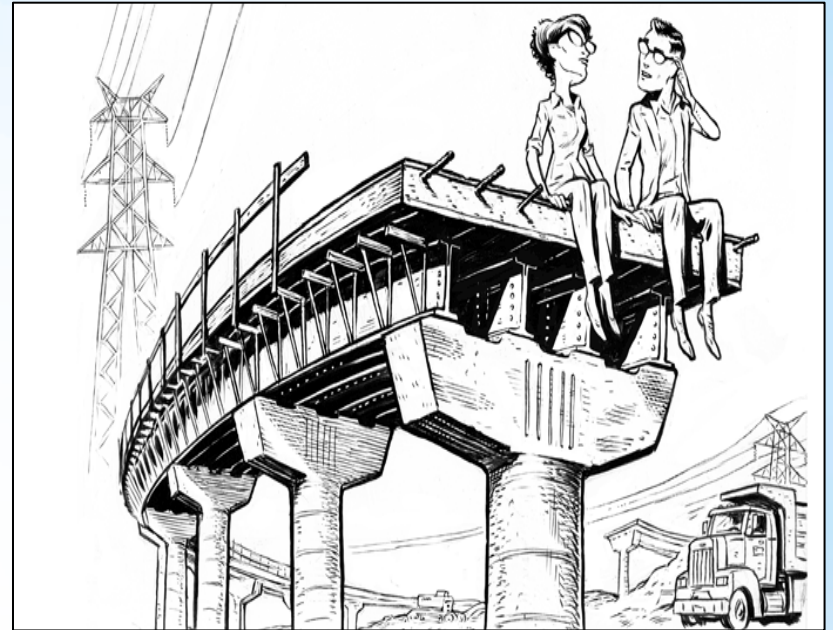
Scenario 5F-A

Year	New and Used Vehicles Retail Tire Sales Revenue 5-Year Phase-In	Add 2% Exise Tax to Motor Fuels	\$18 Registration Fee Increase 2-Year Phase-In	Total Additional to Highway Revenue (70/15/15)	Additional to Department *
	(x \$1 Million)				
2020	\$ 73.5	\$ 74.2	\$ 25.7	\$ 173.5	\$ 121.4
2021	\$ 150.0	\$ 75.7	\$ 52.0	\$ 277.6	\$ 194.4
2022	\$ 229.4	\$ 77.2	\$ 52.5	\$ 359.2	\$ 251.4
2023	\$ 312.0	\$ 78.8	\$ 53.0	\$ 443.8	\$ 310.7
2024	\$ 397.8	\$ 80.4	\$ 53.5	\$ 531.7	\$ 372.2
TOTAL TO THE HIGHWAY FUND IN YEAR 2024				\$ 531.7	\$ 372.2

* This amount reflects a 3.2% deduction for the Central Services Fund. Total net amount is distributed 70% to AHTD, 15% to both Cities and Counties.

Decisions

- 1) Which are the most logical funding sources to move forward?
- 2) Begin preparation of a program of projects for use of any additional funding?
- 3) Continue education, outreach, citizen's opinion survey, and consider additional polling?



Agenda Item D

4th Quarter FY 2017
REPORT TO THE
HIGHWAY COMMISSION
REVIEW & ADVISORY SUBCOMMITTEE



ARKANSAS HIGHWAY COMMISSION
10324 Interstate 30, Little Rock, Arkansas 72209

REPORT TO THE HIGHWAY COMMISSION REVIEW AND ADVISORY SUBCOMMITTEE OF EACH PUBLIC ROAD CONSTRUCTION PROJECT OF TEN MILLION DOLLARS (\$10,000,000) OR MORE.

QUESTIONS?

Stricken language would be deleted from and underlined language would be added to present law.
Act 1 of the Third Extraordinary Session

1 State of Arkansas
2 90th General Assembly
3 Third Extraordinary Session, 2016
4

A Bill

Call Item 2

HOUSE BILL 1009

5 By: Representatives Davis, Eaves, Brown, Della Rosa, J. Mayberry, Ballinger, Bell, Cozart, Dotson,
6 Eads, Eubanks, Henderson, House, Lemons, Speaks, Sullivan
7 By: Senator Hester
8

For An Act To Be Entitled

9
10 AN ACT TO CREATE THE ARKANSAS HIGHWAY IMPROVEMENT
11 PLAN OF 2016; TO DECLARE AN EMERGENCY; AND FOR OTHER
12 PURPOSES.
13
14

Subtitle

15
16 TO CREATE THE ARKANSAS HIGHWAY
17 IMPROVEMENT PLAN OF 2016; AND TO DECLARE
18 AN EMERGENCY.

Agenda Item E

Rules and Criteria for the Distribution of Funds
and
Prioritization of Highway Construction Projects
(STIP Development Process)



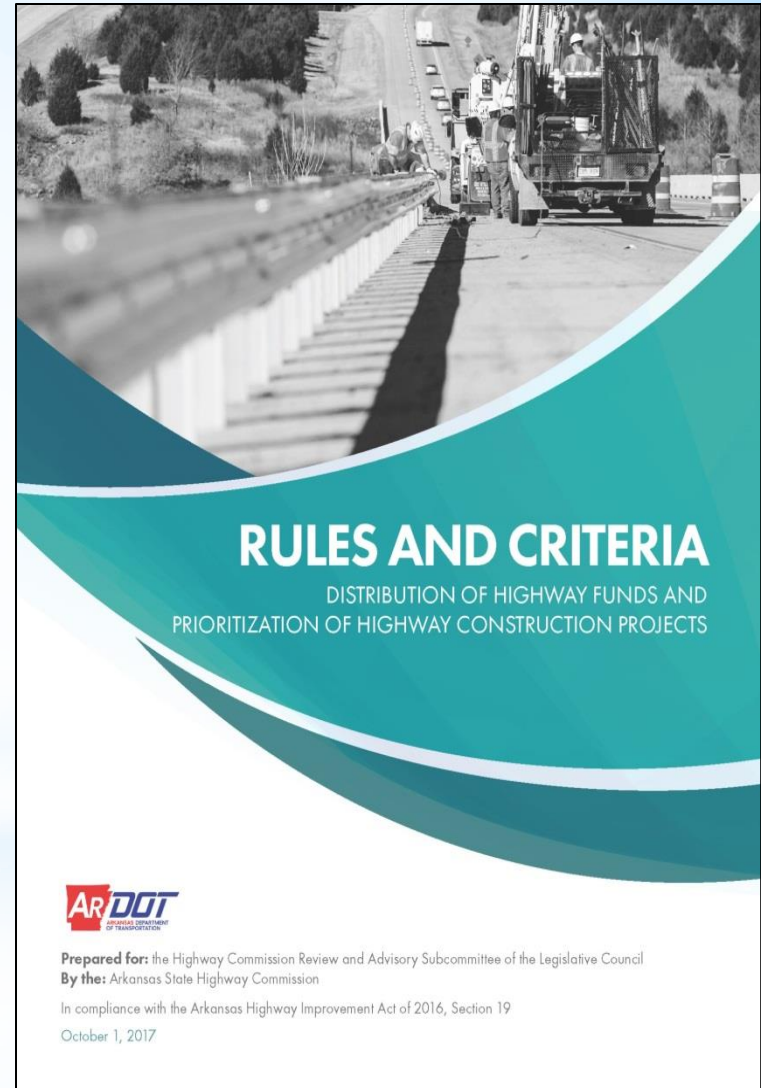
Act 1 Section 19 Report

- 2016 90th General Assembly Third Extraordinary Session
- Arkansas Highway Improvement Plan of 2016
- Section 19 of Act 1
- Requires Department to Submit Rules for:
 - 1) Distribution of Funds:
 - a) State Highway and Transportation Department Fund
 - b) Road and Bridge Repair, Maintenance, Grants Fund
 - 2) Spending Priorities for Highway Construction (STIP)



Act 1 Section 19 Report

- To Highway Commission Review and Advisory Subcommittee of the Legislative Council
- Due October 1, 2017



Act 1 Section 19 Report Highlights

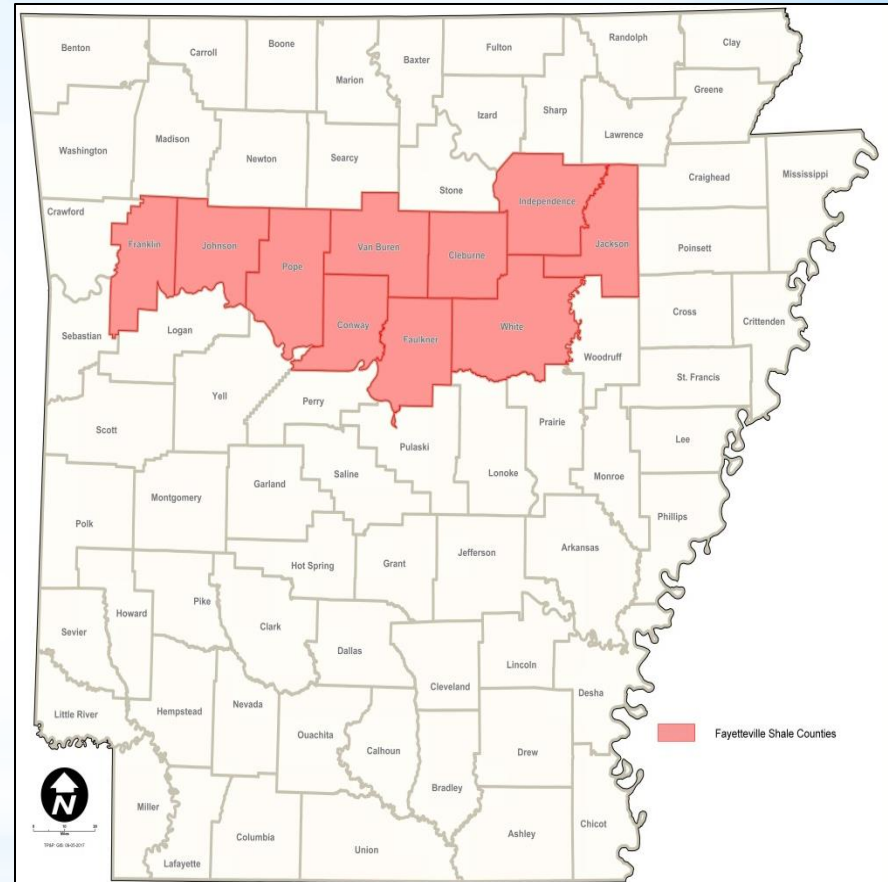
III. Criteria for Distribution of Funds and Distribution

- 1) State Highway and Transportation Department Fund
 - a) State Highway System
 - b) Fixed Expenditures (Maintenance, Administration, Operations, Budgeted Construction)
 - c) IRP Debt Service
 - d) State Match for Federal Funds

Act 1 Section 19 Report Highlights

III. Criteria for Distribution of Funds and Distribution

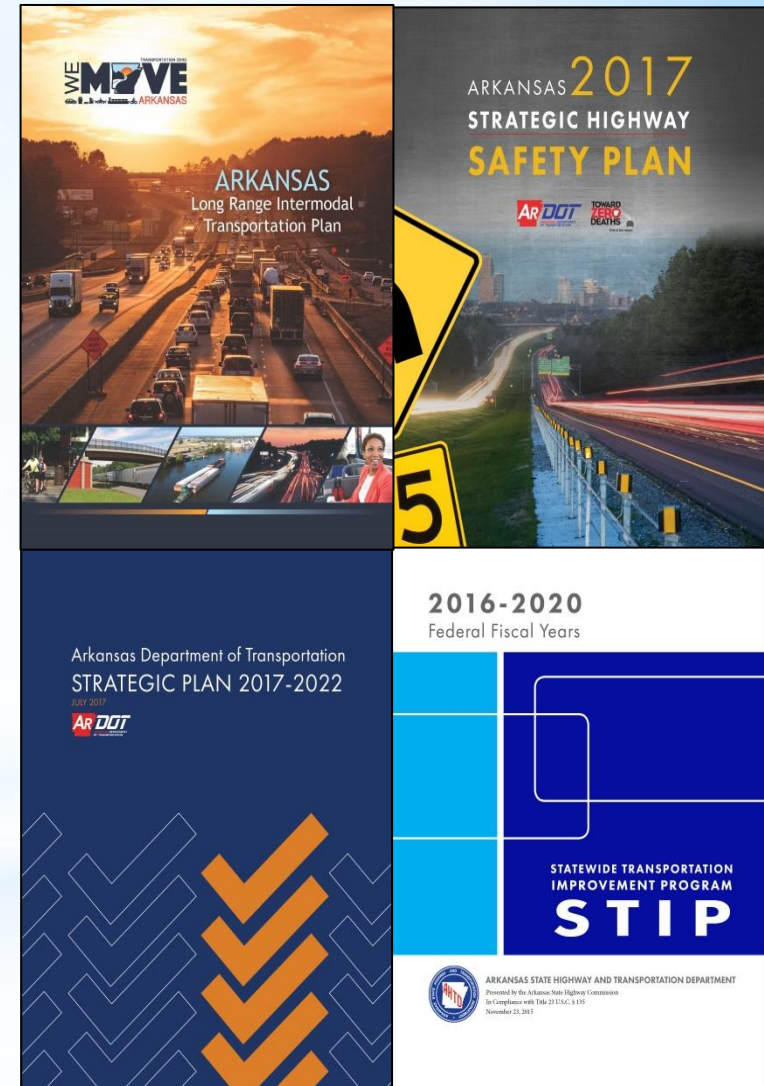
- 2) Road and Bridge Repair, Maintenance, and Grants Fund
 - a) Fayetteville Shale Area Counties
 - b) Based on the Number of Active Gas Wells



Act 1 Section 19 Report Highlights

IV. Statewide Transportation Improvement Program (STIP) Development Process

- ✓ National Performance Measures
- ✓ Performance-based Planning and Programming
- ✓ Cooperative, Continuing and Comprehensive
 - Long Range Intermodal Transportation Plan
 - Strategic Highway Safety Plan
 - Strategic Plan
 - STIP



Act 1 Section 19 Report Highlights

IV. Statewide Transportation Improvement Program (STIP) Development Process

- ✓ Arkansas State Highway Needs and Capital Improvements Study
- ✓ Determination of the Funding Distribution by Category
- ✓ Decision Lens Software Ranking of Projects
- ✓ Project Selection Validation
- ✓ Final Project Selection

STIP Development Process

Arkansas State Highway Needs

Verified by
Arkansas
Legislative
Audit

Annual Needs Next 10 Years Versus Annual Revenue Available Through 2020			
System Preservation			
	Pavement	\$387,000,000	
	Bridges	\$117,000,000	
	Total System Preservation	\$504,000,000	
Capacity Improvements for Congestion Relief		\$305,000,000	
Safety Improvements		\$ 86,000,000	
Maintenance			
	Equipment Upgrades	\$ 19,000,000	
	Facilities Upgrades	\$ 8,000,000	
	Intelligent Transportation Systems (ITS)	\$ 3,000,000	
	Total Maintenance	\$ 30,000,000	
Total Annual Funds Needed for Highway Construction Plan		\$925,000,000	
Annual Funds Available for Highway Construction through the FAST Act (does not include funds committed to Interstate rehabilitation = \$117,000,000 annually)			\$447,000,000
Shortfall for Needs		\$478,000,000	

STIP Development Process

Arkansas State Highway Capital Improvement Goals

Identified Capital Improvement Projects

Four Lane Grid System	\$ 12,697,000,000
New Location / New or Modified Interchanges	\$ 921,000,000
Other Major Widening	\$ 258,000,000
Grand Total	\$ 13,876,000,000

STIP Development Process

Determination of Funding Distribution by Category

Investment Plan for Current STIP

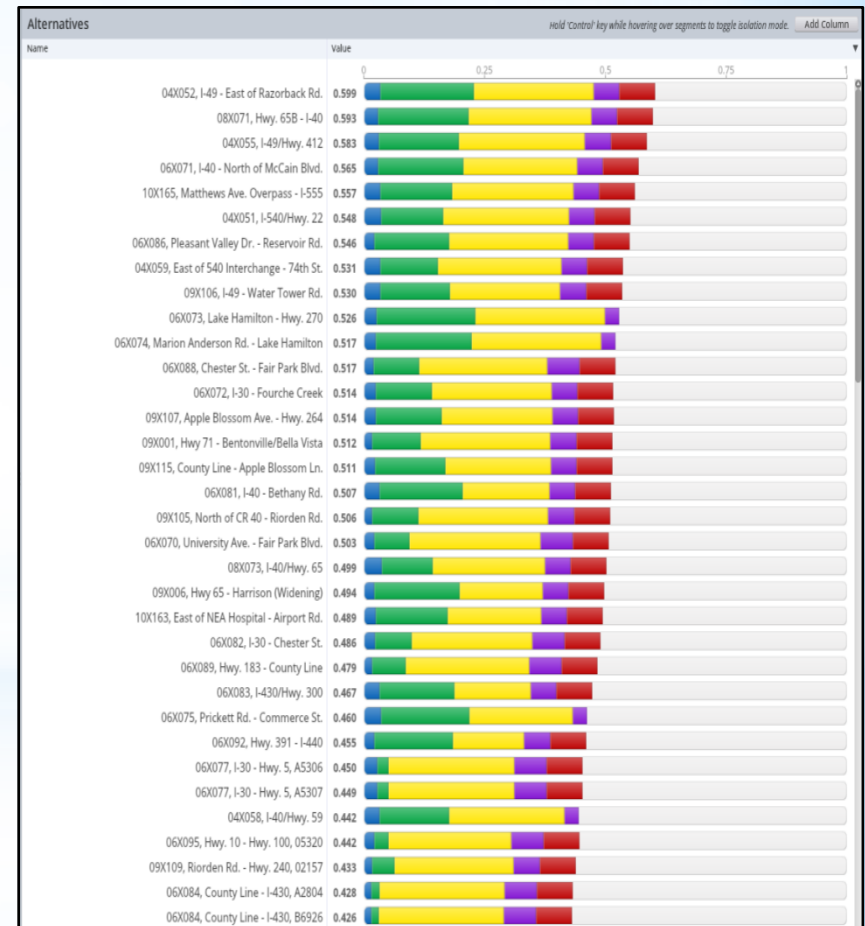
✓ System Preservation	80%
✓ Capital Improvements	20%
✓ Arkansas Primary Highway Network	90%

STIP Development Process

Decision Lens Software Ranking of Projects

Decision Lens Criteria

- ✓ Safety
- ✓ Infrastructure Condition
- ✓ Mobility
- ✓ Economic Consideration
- ✓ Performance Measures



STIP Development Process

Project Selection Validation



✓ Other Factors Considered

- District Engineers
 - Engineering Judgement
 - Technical Expertise
- Partnering

STIP Development Process

Final Project Selection

- ✓ Highway Commission Approves Draft List of Recommended Projects
- ✓ Publish for Public Comment
- ✓ Adjustments
- ✓ Final Approval
 - Federal Highway Administration
 - Federal Transit Administration

Agenda Item F

Overview of Arkansas Legislative Audit Special Report on the Arkansas Department of Transportation



Arkansas Legislative Audit

- May 16, 2017 – Arkansas Legislative Audit - Review of Highway Funding
- Purpose:
 - ✓ To review and verify ARDOT information, estimates and calculations related to highway funding
- Report Objectives:
 - ✓ History of funding sources
 - ✓ History of construction and maintenance costs
 - ✓ State match needed for Federal funds
 - ✓ Additional State revenue to meet system preservation needs
- August 31, 2017 – Report Released



Arkansas State Highway Needs

Exhibit III

Arkansas Department of Transportation (ARDOT)
Summary of Annual State Funds Needed to Meet
Proposed Highway Construction Plan Over a 10-Year Period

\$ 447,000,000

Description		Additional Annual Revenues	
System Preservation			
Pavement			
Bridges			
Total System Preservation			
Capacity Relief			
Safety Improvements			
Maintenance			
Equipment upgrades	19,000,000	19,000,000	
Facilities upgrades	8,000,000		8,000,000
Intelligent Transportation System (ITS)	3,000,000		3,000,000
Total Maintenance	30,000,000	19,000,000	11,000,000
Totals	\$ 925,000,000	\$ 447,000,000	\$ 478,000,000

Note: Amounts shown are rounded.

ALA staff reviewed projected revenues and expenditures for fiscal years 2017 through 2020for consistency and reasonableness when compared with prior years.

Arkansas State Highway Needs

Exhibit III

Arkansas Department of Transportation (ARDOT)
Summary of Annual State Funds Needed to Meet
Proposed Highway Construction Plan Over a 10-Year Period

\$ 478,000,000

Description		Additional Annual Revenues	
System Preservation			
Pavement			
Bridges			
Total System Preservation			
Capacity Relief			
Safety Improvements			
Maintenance			
Equipment upgrades	19,000,000	19,000,000	
Facilities upgrades	8,000,000		8,000,000
Intelligent Transportation System (ITS)	3,000,000		3,000,000
Total Maintenance	30,000,000	19,000,000	11,000,000
Totals	\$ 925,000,000	\$ 447,000,000	\$ 478,000,000

Note: Amounts shown are rounded.

ALA staff reviewed supporting documentation obtained from ARDOT to verify that costs for the projects were reasonable, based on historical information.



Act 1, Third Extraordinary Session, 2016
Highway Commission Review & Advisory Subcommittee
October 19, 2017