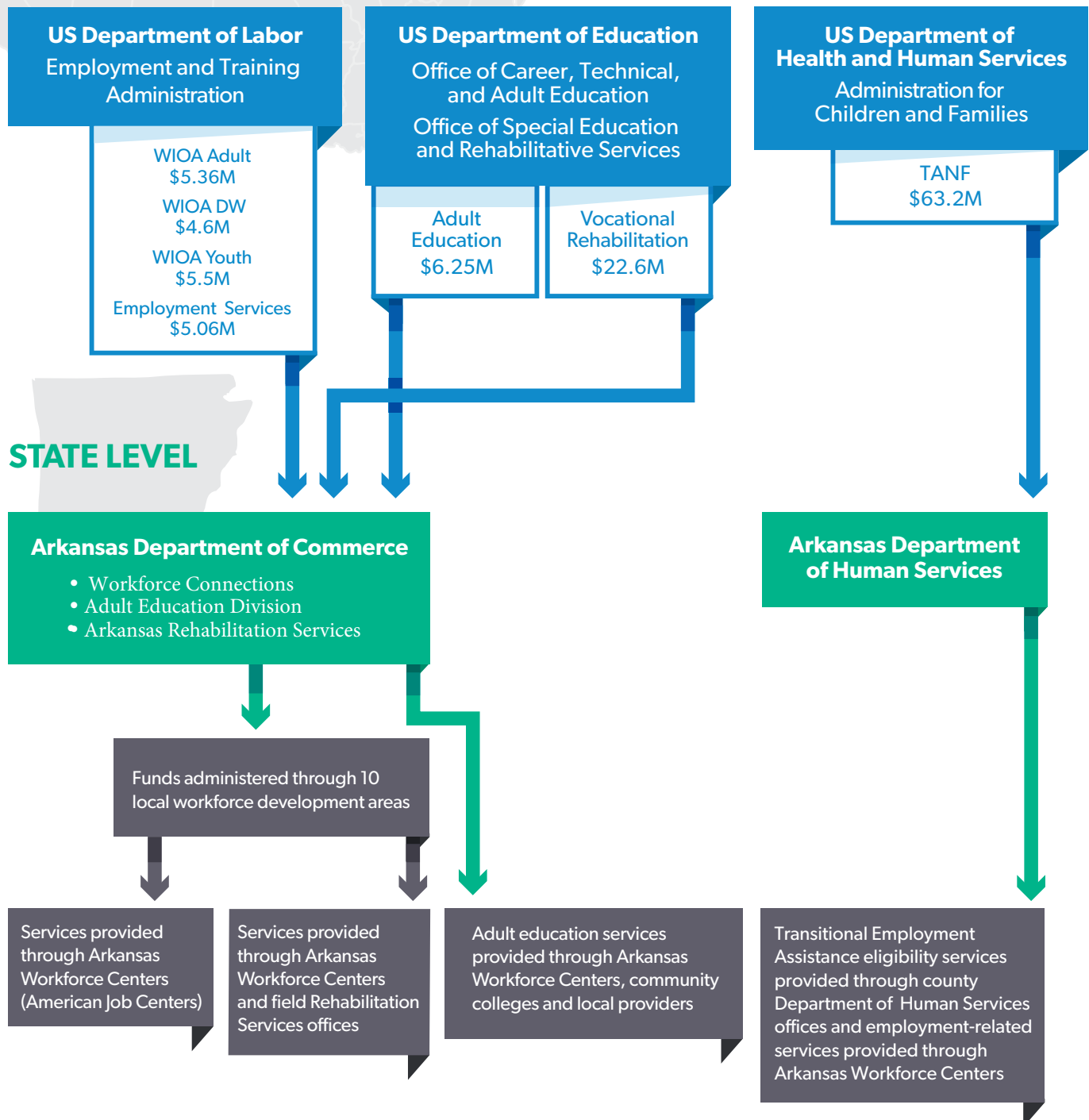


Arkansas Workforce Development System

FEDERAL LEVEL



Note: "WIOA" stands for Workforce Innovation and Opportunity Act. "DW" stands for Dislocated Workers. "TANF" stands for Temporary Assistance for Needy Families. Dollar amounts reflect WIOA and Wagner-Peyser Employment Services amounts for program year 2023. Adult Education and Vocational Rehabilitation numbers are for Fiscal Year 2022 Actual. TANF is for Fiscal Year 2021 and represents the total state allotment. Work, Education, and Training activities are funded at \$1,493,868, and Work Supports are funded at \$3,576,946.

Source: Information was derived from federal and state agency websites from July to August 2023, along with Workforce Innovation and Opportunity Act state plans. US Department of Labor, Employment and Training Administration Advisory System "Training and Employment Guidance Letter no. 15-22," April 21, 2023, <https://www.dol.gov/sites/dolgov/files/ETA/advisories/TEGL/2022/15-22/TEGL%2015-22.pdf>; US Department of Education, "Funds for State Formula-Allocated and Selected Student Aid Programs," 2022, <https://www2.ed.gov/about/overview/budget/statetables/24stbystate.pdf>; and US Department of Health and Human Services, Administration for Children and Families, "FY 2021 Federal TANF & State MOE Financial Data," December 1, 2022, https://www.acf.hhs.gov/sites/default/files/documents/ofa/fy2021_tanf_financial_data_table_20221201.pdf.