



CLINICAL SPECTRUM OF MAMMALIAN MEAT PRODUCT **EXHIBIT H1**

/ ALPHAGAL ALLERGY AFTER TICK BITES : A SOCIAL MEDIA SURVEY



Janelle Williams¹, Melanie Burk^{1,2}, Maria Said^{1,3,4}, Derek Anderson AM^{1,4}

¹ TiARA (Tick-induced Allergies Research and Awareness) Patient Support Group Sub-committee, Australia

² Clinical Research Nurse, Department of Clinical Immunology and Allergy, Royal North Shore Hospital, Sydney, Australia

³ Allergy & Anaphylaxis Australia (A&AA)

⁴ TiARA (Tick-induced Allergies Research and Awareness) Committee, Australia

Introduction



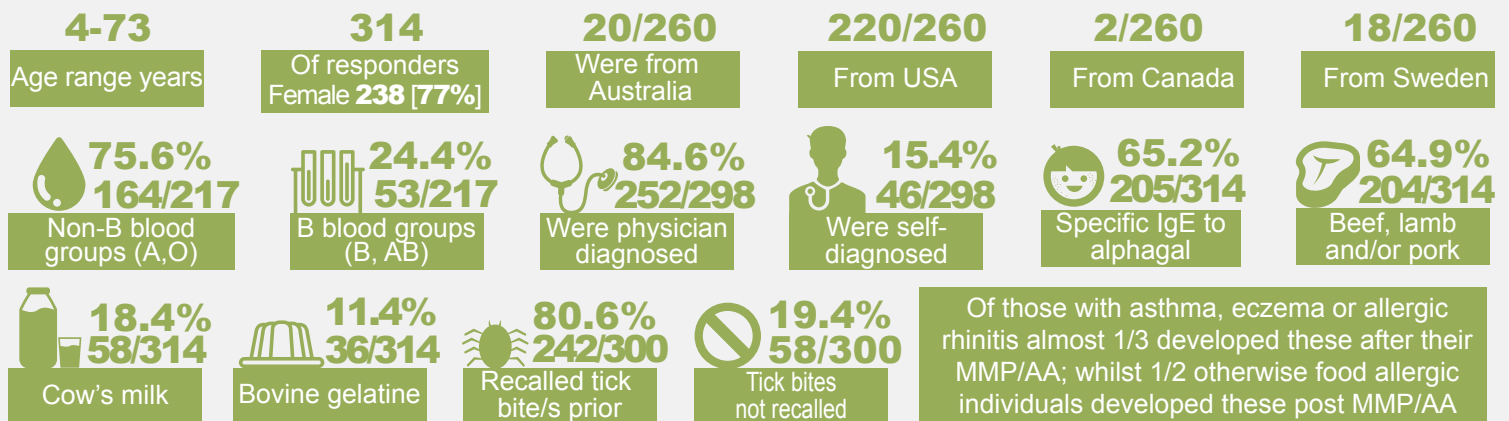
Our study documents the clinical spectrum of mammalian meat product allergy (MMP/AA) due to sensitization to galactose-alpha-1,3-galactose (alphagal), an emergent allergy in tick-endemic areas world-wide (van Nunen 2014, 2015).

Methods

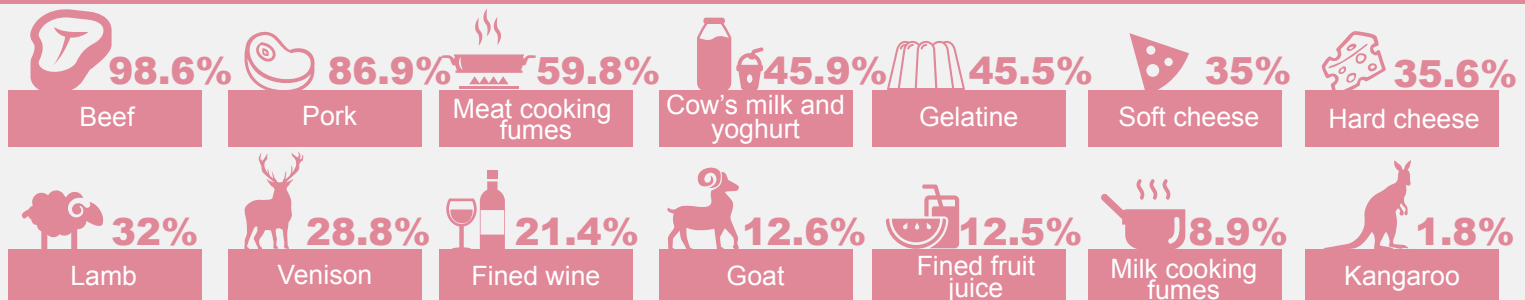


A questionnaire was developed which enquired about demographic data (including blood type), details of diagnosis of alphagal allergy, history of tick bites, need for adrenaline auto-injector possession and atopy. Sources of alphagal-induced reactions were sought in food, cosmetics and medical exposures. Members of the private, international alphagal and A&AA Facebook sites were invited to participate and consent for publication obtained.

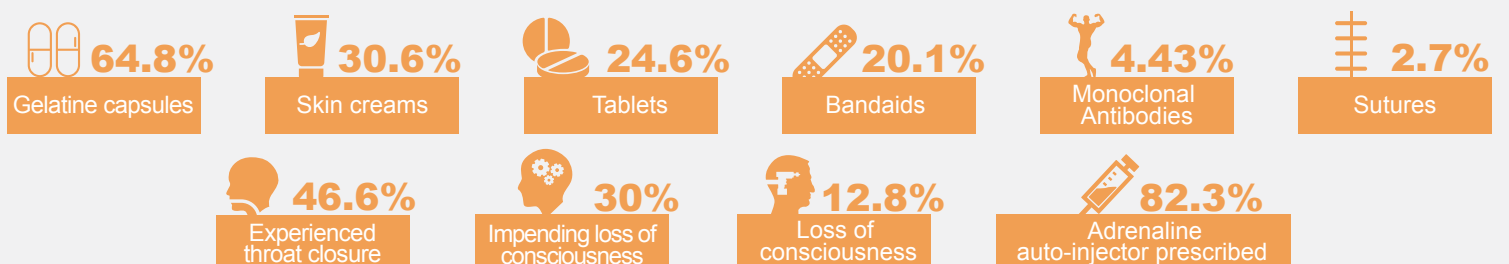
Results - n=314



Food reactivity - n=314



Medical exposures - n=314



Conclusion

In this severe allergy, widespread distribution of MMP/alphagal exposes sufferers to considerable risk of reaction in their daily lives and when presenting for medical treatment.