

High Skill

Occupation	O*NET Skills	Total Annual Openings	Education	May 2015 Mean Wage
Registered Nurses - Assess patient health problems and needs, develop and implement nursing care plans, and maintain medical records. Administer nursing care to ill, injured, convalescent, or disabled patients.	Active Listening, Social Perceptiveness, Service Orientation	741	B	\$56,870
General and Operations Managers - Plan, direct, or coordinate the operations of public or private sector organizations.	Active Listening, Coordination, Monitoring	712	B	\$84,920
Accountants and Auditors - Examine, analyze, and interpret accounting records to prepare financial statements, give advice, or audit and evaluate statements prepared by others.	Active Listening, Reading Comprehension, Critical Thinking	333	B	\$62,430
Clergy - Conduct religious worship and perform other spiritual functions associated with beliefs and practices of religious faith or denomination.	Speaking, Active Listening, Service Orientation	328	B	\$44,530
Elementary School Teachers, Except Special Education - Teach students basic academic, social, and other formative skills in public or private schools at the elementary level.	Instructing, Speaking, Learning Strategies	283	B	\$45,120
Secondary School Teachers, Except Special and Career/Technical Education - Teach students in one or more subjects, such as English, mathematics, or social studies at the secondary level in public or private schools.	Instructing, Learning Strategies, Speaking	256	B	\$48,600
Middle School Teachers, Except Special and Career/Technical Education - Teach students in one or more subjects in public or private schools at the middle, intermediate, or junior high level, which falls between elementary and senior high school as defined by applicable laws and regulations.	Instructing, Speaking, Active Listening	158	B	\$47,440
Sales Managers - Plan, direct, or coordinate the actual distribution or movement of a product or service to the customer.	Speaking, Active Listening, Social Perceptiveness	153	B	\$114,090
Lawyers - Represent clients in criminal and civil litigation and other legal proceedings, draw up legal documents, or manage or advise clients on legal transactions.	Active Listening, Speaking, Critical Thinking	128	D	\$100,320
Management Analysts - Conduct organizational studies and evaluations, design systems and procedures, conduct work simplification and measurement studies, and prepare operations and procedures manuals to assist management in operating more efficiently and effectively.	Active Listening, Reading Comprehension, Speaking	123	B	\$58,040
Computer Systems Analysts - Analyze science, engineering, business, and other data processing problems to implement and improve computer systems.	Critical Thinking, Active Listening, Reading Comprehension	122	B	\$68,680
Computer Programmers - Create, modify, and test the code, forms, and script that allow computer applications to run. Work from specifications drawn up by software developers or other individuals.	Programming, Reading Comprehension, Complex Problem Solving	122	B	\$70,310
Market Research Analysts and Marketing Specialists - Research market conditions in local, regional, or national areas, or gather information to determine potential sales of a product or service, or create a marketing campaign.	Reading Comprehension, Active Listening, Complex Problem Solving	107	B	\$63,240
Medical and Health Services Managers - Plan, direct, or coordinate medical and health services in hospitals, clinics, managed care organizations, public health agencies, or similar organizations.	Reading Comprehension, Speaking, Active Listening	106	B	\$81,250
Software Developers, Applications - Develop, create, and modify general computer applications software or specialized utility programs.	Complex Problem Solving, Programming, Systems Analysis	102	B	\$81,710

Moderate Skill

Occupation	O*NET Skills	Total Annual Openings	Education	May 2015 Mean Wage
Heavy and Tractor-Trailer Truck Drivers - Drive a tractor-trailer combination or a truck with a capacity of at least 26,000 pounds Gross Vehicle Weight (GVW). May be required to unload truck. Requires commercial drivers' license.	Operation and Control, Operation Monitoring, Time Management	1,044	PS	\$38,870
Nursing Assistants - Provide basic patient care under direction of nursing staff. Perform duties such as feed, bathe, dress, groom, or move patients, or change linens. May transfer or transport patients.	Service Orientation, Active Listening, Social Perceptiveness	430	PS	\$22,070
Licensed Practical and Licensed Vocational Nurses - Care for ill, injured, or convalescing patients or persons with disabilities in hospitals, nursing homes, clinics, private homes, group homes, and similar institutions. May work under the supervision of a registered nurse. Licensing required.	Service Orientation, Active Listening, Coordination	368	PS	\$36,370
Teacher Assistants - Perform duties that are instructional in nature or deliver direct services to students or parents. Serve in a position for which a teacher has ultimate responsibility for the design and implementation of educational programs and services.	Active Listening, Speaking, Social Perceptiveness	258	SC	\$19,140
Automotive Service Technicians and Mechanics - Diagnose, adjust, repair, or overhaul automotive vehicles.	Repairing, Troubleshooting, Operation and Control	220	PS	\$34,080
Bookkeeping, Accounting, and Auditing Clerks - Compute, classify, and record numerical data to keep financial records complete. Perform any combination of routine calculating, posting, and verifying duties to obtain primary financial data for use in maintaining accounting records	Active Listening, Reading Comprehension, Speaking	136	SC	\$34,010
Medical Assistants - Perform administrative and certain clinical duties under the direction of a physician. Administrative duties may include scheduling appointments, maintaining medical records, billing, and coding information for insurance purposes.	Speaking, Active Listening, Reading Comprehension	114	PS	\$28,750
Heating, Air Conditioning, and Refrigeration Mechanics and Installers - Install or repair heating, central air conditioning, or refrigeration systems, including oil burners, hot-air furnaces, and heating stoves.	Equipment Maintenance, Troubleshooting, Repairing	114	PS	\$36,650
Firefighters - Control and extinguish fires or respond to emergency situations where life, property, or the environment is at risk. Duties may include fire prevention, emergency medical service, hazardous material response, search and rescue, and disaster assistance.	Active Listening, Coordination, Speaking	104	PS	\$33,440
Hairdressers, Hairstylists, and Cosmetologists - Provide beauty services, such as shampooing, cutting, coloring, and styling hair, and massaging and treating scalp. May apply makeup, dress wigs, perform hair removal, and provide nail and skin care services.	Active Listening, Service Orientation, Critical Thinking	94	PS	\$24,740
Computer User Support Specialists - Provide technical assistance to computer users. Answer questions or resolve computer problems for clients in person, or via telephone or electronically.	Active Listening, Speaking, Reading Comprehension	89	SC	\$39,960
Dental Assistants - Assist dentist, set up equipment, prepare patient for treatment, and keep records.	Active Listening, Reading Comprehension, Speaking	80	PS	\$32,520
Emergency Medical Technicians and Paramedics - Assess injuries, administer emergency medical care, and extricate trapped individuals. Transport injured or sick persons to medical facilities	Critical Thinking, Active Listening, Coordination	76	PS	\$29,230
Medical Records and Health Information Technicians - Compile, process, and maintain medical records of hospital and clinic patients in a manner consistent with medical, administrative, ethical, legal, and regulatory requirements of the health care system	Reading Comprehension, Active Listening, Critical Thinking	54	PS	\$33,610
Computer, Automated Teller, and Office Machine Repairers - Repair, maintain, or install computers, word processing systems, automated teller machines, and electronic office machines, such as duplicating and fax machines.	Active Listening, Repairing, Critical Thinking	46	SC	\$33,510



Doctoral or professional degree (D) – Requires at least three years of full-time academic study beyond a bachelor’s degree.
Master’s degree (M) – Requires one or two years of full-time academic study beyond a bachelor’s degree.
Bachelor’s degree (B) – Requires four or five years of full-time academic study.
Associate degree (A) – Requires at least two years of full-time academic study.
Postsecondary non-degree award (PS) – Programs last a few weeks to more than a year; leads to a certificate or other award.

304 1st cut off

Basic Skill

Occupation	O*NET Skills	Total Annual Openings	Education	May 2015 Mean Wage
Retail Salespersons - Sell merchandise, such as furniture, motor vehicles, appliances, or apparel to consumers.	Active Listening, Persuasion, Speaking	2,495	NFE	\$24,380
Cashiers - Receive and disburse money in establishments other than financial institutions. May use electronic scanners, cash registers, or related equipment. May process credit or debit card transactions and validate checks.	Active Listening, Service Orientation, Speaking	1,994	NFE	\$18,700
Combined Food Preparation and Serving Workers, Including Fast Food - Perform duties which combine preparing and serving food and nonalcoholic beverages.	Active Listening, Service Orientation, Speaking	1,560	NFE	\$17,940
Farmers, Ranchers, and Other Agricultural Managers - Plan, direct, or coordinate the management or operation of farms, ranches, greenhouses, aquacultural operations, nurseries, timber tracts, or other agricultural establishments.	Critical Thinking, Speaking, Judgement and Decision Making	1,555	HS	\$88,090
Waiters and Waitresses - Take orders and serve food and beverages to patrons at tables in dining establishment.	Active Listening, Service Orientation, Social Perceptiveness	1,293	NFE	\$18,480
Laborers and Freight, Stock, and Material Movers, Hand - Manually move freight, stock, or other materials or perform other general labor.	Coordination, Critical Thinking, Operation and Control	1,184	NFE	\$23,800
Office Clerks, General - Perform duties too varied and diverse to be classified in any specific office clerical occupation, requiring knowledge of office systems and procedures.	Active Listening, Reading Comprehension, Speaking	1,093	HS	\$24,760
Customer Service Representatives - Interact with customers to provide information in response to inquiries about products and services and to handle and resolve complaints.	Active Listening, Speaking, Service Orientation	848	HS	\$30,570
Stock Clerks and Order Fillers - Receive, store, and issue sales floor merchandise, materials, equipment, and other items from stockroom, warehouse, or storage yard to fill shelves, racks, tables, or customers' orders.	Speaking, Active Listening, Critical Thinking	802	NFE	\$23,040
First-Line Supervisors of Retail Sales Workers - Directly supervise and coordinate activities of retail sales workers in an establishment or department.	Active Listening, Coordination, Critical Thinking	686	HS	\$33,690
Janitors and Cleaners, Except Maids and Housekeeping Cleaners - Keep buildings in clean and orderly condition. Perform heavy cleaning duties, such as cleaning floors, shampooing rugs, washing walls and glass, and removing rubbish.	Active Listening, Coordination, Critical Thinking	662	NFE	\$21,370
Personal Care Aides - Assist the elderly, convalescents, or persons with disabilities with daily living activities at the person's home or in a care facility.	Service Orientation, Social Perceptiveness, Active Listening	600	NFE	\$18,850
Sales Representatives, Wholesale and Manufacturing, Except Technical and Scientific Products - Sell goods for wholesalers or manufacturers to businesses or groups of individuals. Work requires substantial knowledge of items sold.	Active Listening, Speaking, Persuasion	572	HS	\$58,870
Childcare Workers - Attend to children at schools, businesses, private households, and childcare institutions. Perform a variety of tasks, such as dressing, feeding, bathing, and overseeing play.	Monitoring, Service Orientation, Speaking	564	HS	\$18,740
Cooks, Restaurant - Prepare, season, and cook dishes such as soups, meats, vegetables, or desserts in restaurants. May order supplies, keep records and accounts, price items on menu, or plan menu.	Coordination, Monitoring, Active Listening	499	NFE	\$21,470



Some college, no degree (SC) – Requires the completion of a high school diploma or equivalent plus the completion of one or more postsecondary courses that did not result in a degree or award.
High School diploma or equivalent (HS) – Requires the completion of high school or an equivalent program resulting in the award of a high school diploma or an equivalent, such as a GED.
No Formal Education (NFE) – Signifies the completion of any level of primary or secondary education that did not result in the award of a high school diploma or an equivalent.

Arkansas' Hot 45 Demand Occupations 2016-2017



Demand Occupations

For Career Information or Job Search Help, Visit an
Arkansas Comprehensive Workforce Center

North Central Arkansas

396 Barnett Drive
Batesville, AR 72501
870.793.4156

Eastern Arkansas

300 Eldridge Rd.
Suite #2
Forrest City, AR 72335
870.633.2900

ASU Mid-South
2000 W. Broadway
West Memphis, AR 72301
870.400.2269

Western Arkansas

616 Garrison Ave.
Room 101
Fort Smith, AR 72901
479.783.0231

Southwest Arkansas

237 Jackson St. SW
Camden, AR 71701
870.836.5024

205 Smith Road, Suite A
Hope, AR 71801
870.777.3421

523 E. Sixth Street
El Dorado, AR 71730
870.862.6456

Southeast Arkansas

1001 S. Tennessee
Pine Bluff, AR 71601
870.534.1920

Northwest Arkansas

2143 W. Martin Luther King Blvd.
Fayetteville, AR 72701
479.521.5730

818 Hwy 62-65
Harrison, AR 72601
870.741.8236

1058 Highland Circle, #20
Mountain Home, AR 72653
870.425.2386

100 North Dixieland Road
Rogers, AR 72756
479.636.4755

City of Little Rock

5401 S. University Ave.
Little Rock, AR 72209
501.682.7719

West Central Arkansas

2254 Albert Pike
Suite A
Hot Springs, AR 71913
501.525.3450

1725 E. Sullenberger
Malvern, AR 72104
501.332.5461

104 South Rochester
Russellville, AR 72801
479.968.2784

Northeast Arkansas

2311 E. Nettleton
Jonesboro, AR 72401
870.935.5594

Central Arkansas

1500 N. Museum Rd.
Suite 111
Conway, AR 72032
501.730.9894

ARKANSAS' TOP 10 INDUSTRIES

NAICS Code	NAICS Title	Net Growth
722500	Restaurants and Other Eating Places	2,903
551000	Management of Companies and Enterprises	1,778
624100	Individual and Family Services	1,588
452900	Other General Merchandise Stores	1,513
561300	Employment Services	1,371
311600	Animal Slaughtering and Processing	1,225
238200	Building Equipment Contractors	1,028
621100	Offices of Physicians	964
561700	Services to Buildings and Dwellings	875
541500	Computer Systems Design and Related Services	809

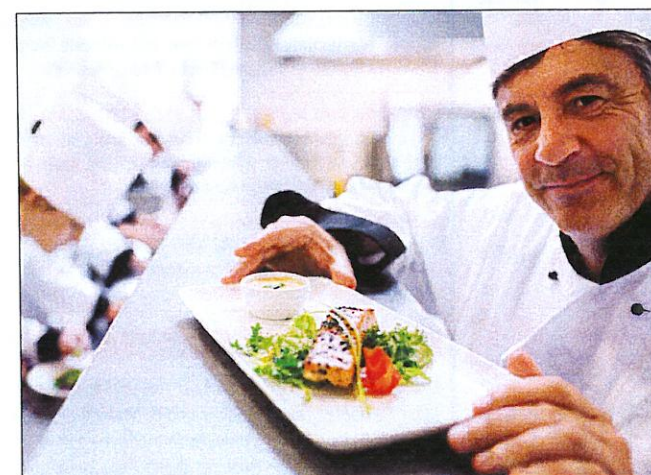
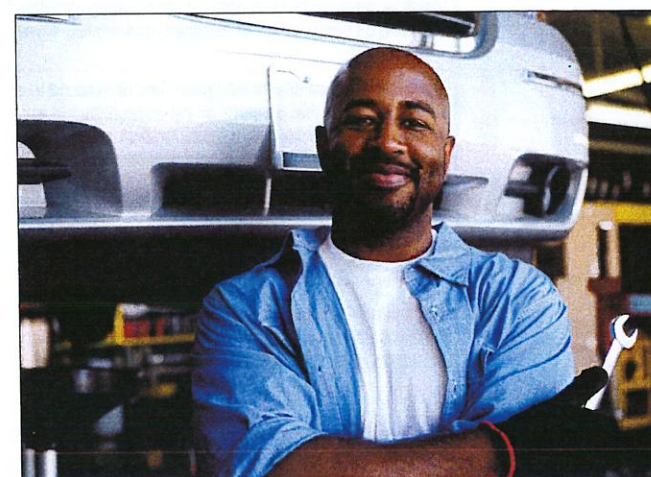
For more information and other
Workforce Center and DWS local office
locations, please visit:
dws.arkansas.gov, or use the QR Code
below.



<http://snap.vu/k2bq>

Prepared by:
Labor Market Information
Occupational Career Information
P.O. Box 2981
Little Rock, AR 72203
501-682-3121

"Equal Opportunity Employer Program"
"Auxiliary aids and services are available upon request to individuals with
disabilities."
TTD/TTY Voice: 1-800-285-1121
TDD: 1-800-285-1131



Arkansas'
2016-2017

Hot
45

ARKANSAS
WORKFORCE
CENTERS
Bringing People and Jobs Together.™

adws
Arkansas Department
of Workforce Services