

Adequacy Study 2024

Methodologies and Definitions

Prepared for the
House and Senate
Committees
on Education



January 8, 2024



Contents

Table of Contents

Introduction.....	1
Adequacy Regions.....	1
Central Arkansas.....	2
Lower Delta	2
North Central Arkansas	2
Northwest Arkansas	3
Upper Delta	3
Southwest Region.....	4
BLR Cohort Schools	4
Elementary Schools	5
Middle/Junior High Schools	5
High Schools	5
K-12 Comprehensive Schools	5
District Type.....	9
Expenditures: District- and School-level	10
Minority Quintiles	11
District Values	11
School Values.....	11
Free and Reduced-Price Lunch (FRL) Quintiles	11
District Values	11
School Values.....	11
School Letter Grade Categories.....	12
Size Categories.....	14
Urban/Rural Categories.....	14



Introduction

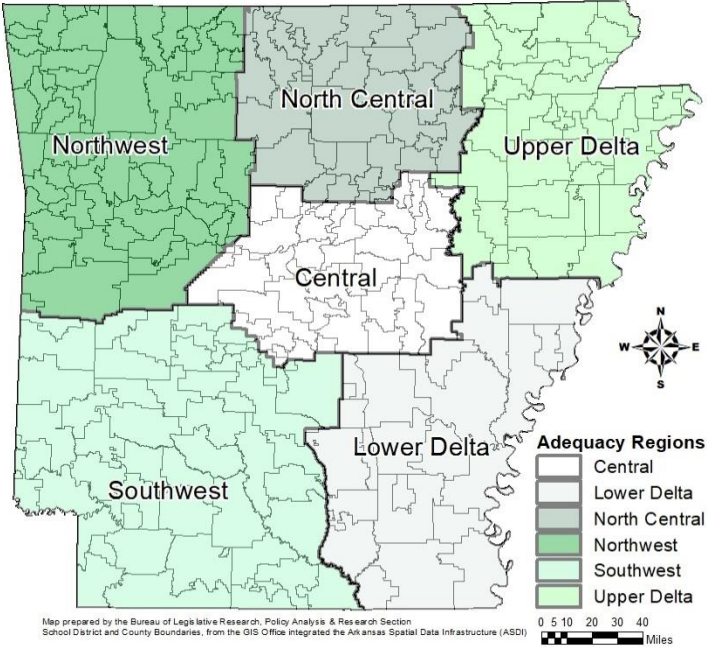
This guide provides background information regarding definitions and methodologies used for the 2024 Adequacy Study. Entries are listed in alphabetical order using the same terminology as found in the individual adequacy study reports.

Adequacy Regions

For the purpose of illustrating expenditure patterns among schools, the state’s school districts have been divided into six geographical regions as listed below:

1. Northwest Arkansas
2. North Central Arkansas
3. Upper Delta
4. Lower Delta
5. Southwest Arkansas
6. Central Arkansas

Charter school systems are not bound to a geographic area, therefore they are not included in any of the regions. The following tables provide lists for each region of included counties and school districts:



Counties in Regions

Northwest	North Central	Upper Delta	Lower Delta	Southwest	Central
Benton	Baxter	Clay	Arkansas	Calhoun	Conway
Boone	Cleburne	Craighead	Ashley	Clark	Faulkner
Carroll	Fulton	Crittenden	Bradley	Columbia	Lonoke
Crawford	Independence	Cross	Chicot	Dallas	Perry
Franklin	Izard	Greene	Cleveland	Garland	Prairie
Johnson	Marion	Jackson	Desha	Grant	Pulaski
Logan	Searcy	Lawrence	Drew	Hempstead	Saline
Madison	Sharp	Mississippi	Jefferson	Hot Spring	White
Newton	Stone	Poinsett	Lee	Howard	
Pope	Van Buren	Randolph	Lincoln	Lafayette	
Scott		St. Francis	Monroe	Little River	
Sebastian		Woodruff	Phillips	Miller	
Washington				Montgomery	
Yell				Nevada	
				Ouachita	
				Pike	
				Polk	
				Sevier	
				Union	

School Districts in Regions

Central Arkansas

1.	Bald Knob	12.	England	23.	North Little Rock
2.	Bauxite	13.	Greenbrier	24.	Pangburn
3.	Beebe	14.	Guy-Perkins	25.	Perryville
4.	Benton	15.	Harmony Grove (Saline)	26.	Pulaski CSSD
5.	Bradford	16.	Hazen	27.	Riverview
6.	Bryant	17.	Jacksonville North Pulaski	28.	Rose Bud
7.	Cabot	18.	Little Rock	29.	Searcy
8.	Carlisle	19.	Lonoke	30.	South Conway County
9.	Conway	20.	Mayflower	31.	Vilonia
10.	Des Arc	21.	Mt Vernon/Enola	32.	White County Central
11.	East End	22.	Nemo Vista	33.	Wonderview

Lower Delta

1.	Barton-Lexa	10.	Hamburg	19.	Star City
2.	Brinkley	11.	Helena-West Helena	20.	Stuttgart
3.	Clarendon	12.	Hermitage	21.	Warren
4.	Cleveland County	13.	Lakeside (Chicot County)	22.	Watson Chapel
5.	Crossett	14.	Lee County	23.	White Hall
6.	Dermott	15.	Marvell-Elaine	24.	Woodlawn
7.	Dewitt	16.	McGehee		
8.	Drew Central	17.	Monticello		
9.	Dumas	18.	Pine Bluff		

North Central Arkansas

1.	Batesville	11.	Izard County Consolidated	21.	Searcy County
2.	Calico Rock	12.	Mammoth Spring	22.	Shirley
3.	Cave City	13.	Melbourne	23.	South Side (Van Buren)
4.	Cedar Ridge	14.	Midland	24.	Southside (Ind.)
5.	Clinton	15.	Mountain Home	25.	Viola
6.	Concord	16.	Mountain View	26.	West Side Cleburne
7.	Cotter	17.	Norfork	27.	Yellville-Summit
8.	Flippin	18.	Ozark Mountain		
9.	Heber Springs	19.	Quitman		
10.	Highland	20.	Salem		

Northwest Arkansas

1.	Alma	16.	Dover	30.	Huntsville	44.	Pottsville
2.	Alpena	17.	Elkins	31.	Jasper	45.	Prairie Grove
3.	Atkins	18.	Eureka Springs	32.	Lamar	46.	Rogers
4.	Bentonville	19.	Farmington	33.	Lavaca	47.	Russellville
5.	Bergman	20.	Fayetteville	34.	Lead Hill	48.	Scranton
6.	Berryville	21.	Fort Smith	35.	Lincoln	49.	Siloam Springs
7.	Booneville	22.	Gentry	36.	Magazine	50.	Springdale
8.	Cedarville	23.	Gravette	37.	Mansfield	51.	Two Rivers
9.	Charleston	24.	Green Forest	38.	Mountainburg	52.	Valley Springs
10.	Clarksville	25.	Greenland	39.	Mulberry/Pleasant View Bi-County	53.	Van Buren
11.	County Line	26.	Greenwood	40.	Omaha	54.	Waldron
12.	Danville	27.	Hackett	41.	Ozark	55.	West Fork
13.	Dardanelle	28.	Harrison	42.	Paris	56.	Western Yell Co
14.	Decatur	29.	Hector	43.	Pea Ridge	57.	Westside
15.	Deer/Mt. Judea						

Upper Delta

1.	Armored	15.	Hillcrest	29.	Palestine-Wheatley
2.	Augusta	16.	Hoxie	30.	Paragould
3.	Bay	17.	Jackson County	31.	Piggott
4.	Blytheville	18.	Jonesboro	32.	Pocahontas
5.	Brookland	19.	Lawrence County	33.	Rector
6.	Buffalo Island Central	20.	Manila	34.	Rivercrest
7.	Corning	21.	Marion	35.	Riverside
8.	Cross County	22.	Marked Tree	36.	Sloan-Hendrix
9.	Earle	23.	Marmaduke	37.	Trumann
10.	East Poinsett County	24.	Maynard	38.	Valley View
11.	Forrest City	25.	McCrary	39.	West Memphis
12.	Gosnell	26.	Nettleton	40.	Westside Consolidated
13.	Greene County Tech	27.	Newport	41.	Wynne
14.	Harrisburg	28.	Osceola		

Southwest Region

1.	Arkadelphia	19.	Genoa Central	37.	Mineral Springs
2.	Ashdown	20.	Glen Rose	38.	Mount Ida
3.	Bearden	21.	Gurdon	39.	Mountain Pine
4.	Bismarck	22.	Hampton	40.	Nashville
5.	Blevins	23.	Harmony Grove (Ouachita)	41.	Nevada
6.	Caddo Hills	24.	Hope	42.	Ouachita
7.	Camden-FV	25.	Horatio	43.	Ouachita River
8.	Centerpoint	26.	Hot Springs	44.	Parkers Chapel
9.	Cossatot River	27.	Jessieville	45.	Poyen
10.	Cutter-Morning- Star	28.	Junction City	46.	Prescott
11.	DeQueen	29.	Kirby	47.	Sheridan
12.	Dierks	30.	Lafayette County	48.	Smackover-Norphlet
13.	El Dorado	31.	Lake Hamilton	49.	South Pike County
14.	Emerson-Taylor-Bradley	32.	Lakeside (Garland)	50.	Spring Hill
15.	Fordyce	33.	Magnet Cove	51.	Strong-Huttig
16.	Foreman	34.	Magnolia	52.	Texarkana
17.	Fouke	35.	Malvern		
18.	Fountain Lake	36.	Mena		

BLR Cohort Schools

BLR Cohort Schools are analyzed as a separate set of schools because they have been found to statistically significantly have students performing at higher-than-expected achievement levels. The methodology used to identify the set of BLR Cohort Schools is similar to what is called a “successful school” model frequently used by education researchers. For the analysis, the Bureau of Legislative Research (BLR) used a regression formula to predict Every Student Succeeds Act (ESSA) School Index **Weighted Achievement** scores based on a wide variety of student variables. All test score and student variables used were from 2022.

Schools were divided into four groups: Elementary, Middle/Junior High School, High School, and Comprehensive K-12. Schools with grade configurations of K-6 were considered elementary schools; schools with grade configurations of 7-12 were considered high schools.

Using the software **Statistical Package for the Social Sciences (SPSS)** and data obtained from the Division of Elementary and Secondary Education (DESE)’s My School Information website (<https://myschoolinfo.arkansas.gov>), a number of demographic and income variable statistics¹ were entered into a stepwise regression formula for each of the four sets of schools. This formula identifies the variables that add the most predictive value for the weighted achievement scores.

¹ Student variables as recorded in the Arkansas Public School Computer Network that were entered in to the regression formula to see if they contributed to the statistically significant prediction of test scores included: % American Indian; % Asian, % Black/African/American; % Hawaiian/Pacific Islander; % Hispanic/Latino; % White; % Two or More Races; % Foster; % Students with Disabilities Section 504; % English Learners; % Migrant; % Special Education; % Male; % Female; % Free and Reduced-Price Lunch; % Immunization Exempt Students; and, % School Choice Students.

The resulting regression formulas are listed below along with the R value² and R square³ value for each equation.

Elementary Schools

Predicted Score = 76.945 + (-.296) %Free/Reduced Lunch + (-.175) %Black/African American + (-.369) %Special Education + (.321) %Asian

Statistically significant at the <.001 level

R=.738; R Square =.541

Middle/Junior High Schools

Predicted Score = 62.967 + (-.233) %Free/Reduced Lunch + (-.173) %Black/African American + (.733) %Asian + (-.350) %Hawaiian/Pacific Islander

Statistically significant at the <.001 level

R=.738; R Square=.544

High Schools

Predicted Score = 40.080 + (-.204) %Black/African American + (1.663) %Asian + (-.401) %English Learners + (.114) Chronic Absence Score + (-.405) %Special Education + (-.085) %Free/Reduced Lunch

Statistically significant at the <.001 level

R=.692; R Square =.478

K-12 Comprehensive Schools

Predicted Score = 38.205 + (-.215) %Black/African American

Statistically significant at the <.001 level

R=.552; R Square = .305

Summary of BLR Cohort Equation Values

School	Predicted Score	%Free/Reduced Lunch	%Black/African American	%Asian	%Hawaiian/Pacific Islander	%English Learners	%Special Education	Chronic Absence Score	R=	R Square=
Elem	76.945	-0.296	-0.175	0.321			-0.369		0.738	0.541
Mid/Jr.	62.967	-0.233	-0.173	0.733	-0.350				0.738	0.544
High	40.080	-0.085	-0.204	1.663		-0.401	-0.405	0.114	0.692	0.478
K-12	38.205		-0.215						0.552	0.305
Statistically significant at the <.001 level										

² R value refers to the correlation value. Correlation values range from -1 to 1. Values closer to 0 signify no or very little relationship, while values close to -1 indicate strong negative relations and values close to 1 indicate strong positive relationships.

³ R square values represent the amount of variance explained by the all of the variables in the equation. An R Square of .3, for instance, indicated that 30 percent of the variance in achievement scores is explained by the variables included in the equation.

For each set of schools, the Predicted Weighted Achievement Score for each school was subtracted from that school’s actual Weighted Achievement Score. The schools were then sorted by the values of the remainders for each school (the gap between Actual Scores and Predicted) and the 10% of schools in each group with the largest remainders were identified as BLR Cohort Schools.

The BLR Cohort Schools are:

Elementary Schools:

School	District
Armored Elementary School	ARMORED SCHOOL DISTRICT
Bergman Elementary School	BERGMAN SCHOOL DISTRICT
C.B. Partee Elementary School	BRINKLEY SCHOOL DISTRICT
Concord Elementary School	CONCORD SCHOOL DISTRICT
Park Elementary School	CORNING SCHOOL DISTRICT
Wickes Elementary School	COSSATOT RIVER SCHOOL DISTRICT
Cross County Elem Tech Academy	CROSS COUNTY SCHOOL DISTRICT
S.C. Tucker Elementary School	DANVILLE SCHOOL DISTRICT
Des Arc Elementary School	DES ARC SCHOOL DISTRICT
Hugh Goodwin Elementary School	EL DORADO SCHOOL DISTRICT
Yocum Elementary School	EL DORADO SCHOOL DISTRICT
Vandergriff Elementary School	FAYETTEVILLE SCHOOL DISTRICT
Beard Elementary School	FORT SMITH SCHOOL DISTRICT
Euper Lane Elementary School	FORT SMITH SCHOOL DISTRICT
Founders Classical Academies of Arkansas West Little Rock Elementary	FOUNDERS CLASSICAL ACADEMIES OF ARKANSAS
Friendship Aspire Academy	FRIENDSHIP ASPIRE ACADEMY PINE BLUFF
Gary E. Cobb Middle School	GENOA CENTRAL SCHOOL DISTRICT
Genoa Central Elem. School	GENOA CENTRAL SCHOOL DISTRICT
Green Forest Elementary School	GREEN FOREST SCHOOL DISTRICT
Greenbrier Wooster Elementary	GREENBRIER SCHOOL DISTRICT
Greenbrier Westside Elementary	GREENBRIER SCHOOL DISTRICT
Greenbrier Springhill Elementary School	GREENBRIER SCHOOL DISTRICT
Greenbrier Eastside Elementary	GREENBRIER SCHOOL DISTRICT
Weiner Elementary	HARRISBURG SCHOOL DISTRICT
Forest Heights Stem Academy	LITTLE ROCK SCHOOL DISTRICT
Jefferson Elementary School	LITTLE ROCK SCHOOL DISTRICT
Forest Park Elementary School	LITTLE ROCK SCHOOL DISTRICT
Gibbs Magnet Elementary School	LITTLE ROCK SCHOOL DISTRICT
McCrary Elementary School	MCCRORY SCHOOL DISTRICT
McGehee Elementary School	MCGEHEE SCHOOL DISTRICT
Rural Special Elem. School	MOUNTAIN VIEW SCHOOL DISTRICT
Timbo Elementary School	MOUNTAIN VIEW SCHOOL DISTRICT
Mountain View Elem. School	MOUNTAIN VIEW SCHOOL DISTRICT
Nemo Vista Elementary School	NEMO VISTA SCHOOL DISTRICT
Elgin B Milton Primary School	OZARK SCHOOL DISTRICT
Woodrow Wilson Elem. School	PARAGOULD SCHOOL DISTRICT

School	District
Paragould Primary School	PARAGOULD SCHOOL DISTRICT
College Station Elem. School	PULASKI COUNTY SPECIAL SCHOOL DISTRICT
Baker Interdistrict Elem. Sch.	PULASKI COUNTY SPECIAL SCHOOL DISTRICT
Sylvan Hills Elementary School	PULASKI COUNTY SPECIAL SCHOOL DISTRICT
Sherwood Elementary School	PULASKI COUNTY SPECIAL SCHOOL DISTRICT
Oak Grove Elementary School	PULASKI COUNTY SPECIAL SCHOOL DISTRICT
Rivercrest Elementary School	RIVERCREST SCHOOL DISTRICT
Eastside Elementary School	ROGERS SCHOOL DISTRICT
Janie Darr Elementary School	ROGERS SCHOOL DISTRICT
Frank Tillery Elem. School	ROGERS SCHOOL DISTRICT
Salem Elementary School	SALEM SCHOOL DISTRICT
Leslie Intermediate School	SEARCY COUNTY SCHOOL DISTRICT
Murfreesboro Elementary School	SOUTH PIKE COUNTY SCHOOL DISTRICT
John Tyson Elementary School	SPRINGDALE SCHOOL DISTRICT
Vera Kilpatrick Elem. School	TEXARKANA SCHOOL DISTRICT
Valley Springs Elem. School	VALLEY SPRINGS SCHOOL DISTRICT

Middle/Junior High Schools

School	District
Atkins Middle School	ATKINS SCHOOL DISTRICT
Bright Field Middle School	BENTONVILLE SCHOOL DISTRICT
Bergman Middle School	BERGMAN SCHOOL DISTRICT
Bismarck Middle School	BISMARCK SCHOOL DISTRICT
Booneville Jr High School	BOONEVILLE SCHOOL DISTRICT
Clinton Jr High School	CLINTON SCHOOL DISTRICT
Ruth Doyle Middle School	CONWAY SCHOOL DISTRICT
Dequeen Middle School	DEQUEEN SCHOOL DISTRICT
Dover Middle School	DOVER SCHOOL DISTRICT
Estem East Village Jr High Public Charter School	ESTEM PUBLIC CHARTER SCHOOL
Estem Junior High Public Charter School	ESTEM PUBLIC CHARTER SCHOOL
Greenbrier Middle School	GREENBRIER SCHOOL DISTRICT
Heber Springs Middle School	HEBER SPRINGS SCHOOL DISTRICT
Hope Academy of Public Service	HOPE SCHOOL DISTRICT
Swifton Middle School	JACKSON CO. SCHOOL DISTRICT
Kipp: Delta College Prep School	KIPP DELTA PUBLIC SCHOOLS
Nemo Vista Middle School	NEMO VISTA SCHOOL DISTRICT
Hellstern Middle School	SPRINGDALE SCHOOL DISTRICT
Helen Tyson Middle School	SPRINGDALE SCHOOL DISTRICT
Valley Springs Middle School	VALLEY SPRINGS SCHOOL DISTRICT

High Schools

School	District
Alpena High School	ALPENA SCHOOL DISTRICT
Bergman High School	BERGMAN SCHOOL DISTRICT
Bismarck High School	BISMARCK SCHOOL DISTRICT
Booneville Jr High School	BOONEVILLE SCHOOL DISTRICT
Clinton High School	CLINTON SCHOOL DISTRICT
Concord High School	CONCORD SCHOOL DISTRICT
Cross Cnty High A New Tech Sch	CROSS COUNTY SCHOOL DISTRICT
Dequeen High School	DEQUEEN SCHOOL DISTRICT
Bradley High School	EMERSON-TAYLOR-BRADLEY SCH. DISTRICT
Estem High School	ESTEM PUBLIC CHARTER SCHOOL
Eureka Springs High School	EUREKA SPRINGS SCHOOL DISTRICT
Fordyce High School	FORDYCE SCHOOL DISTRICT
Gosnell High School	GOSNELL SCHOOL DISTRICT
Haas Hall Academy	HAAS HALL ACADEMY
Haas Hall Academy Jones Center	HAAS HALL ACADEMY
Haas Hall Academy At the Lane	HAAS HALL ACADEMY
Tuckerman High School	JACKSON CO. SCHOOL DISTRICT
Lead Hill High School	LEAD HILL SCHOOL DISTRICT
Lisa Academy North High School	LISA ACADEMY
Parkview Magnet High School	LITTLE ROCK SCHOOL DISTRICT
Manila High School	MANILA SCHOOL DISTRICT
Marmaduke High School	MARMADUKE SCHOOL DISTRICT
Nemo Vista High School	NEMO VISTA SCHOOL DISTRICT
Palestine-Wheatley Senior High	PALESTINE-WHEATLEY SCH. DIST.
Rogers New Technology High School	ROGERS SCHOOL DISTRICT
Rogers High School	ROGERS SCHOOL DISTRICT
Salem High School	SALEM SCHOOL DISTRICT
Valley Springs High School	VALLEY SPRINGS SCHOOL DISTRICT

Comprehensive K-12 Schools

School	District
Fayetteville Virtual Academy A District Conversion Charter School	FAYETTEVILLE SCHOOL DISTRICT
Don Tyson School of Innovation	SPRINGDALE SCHOOL DISTRICT

District Type

In 2023, Arkansas had 234 traditional school districts, which are tied to a geographic area and supported by local millage rates. In addition, the state had 21 open-enrollment charter systems (excluding The Excel Center, a charter school for adults), which may enroll students from across school district boundaries.

The 21 charter school systems in 2023 and the schools they encompass are listed in the following table:

SYSTEM	SCHOOLS
ACADEMICS PLUS	Maumelle Charter Elementary
	Maumelle Charter Middle School
	Maumelle Charter High School
	Scott Charter School
ARKANSAS ARTS ACADEMY	Arkansas Arts Academy Elementary
	Arkansas Arts Academy High
ARKANSAS CONNECTIONS ACADEMY	Arkansas Connections Academy High
ARKANSAS LIGHTHOUSE CHARTER SCHOOLS	Jacksonville Lighthouse Elementary Academy
	Jacksonville Lighthouse Flightline Academy
	Jacksonville Lighthouse High School Academy
ARKANSAS MILITARY AND FIRST RESPONDERS ACADEMY	Arkansas Military and First Responders Academy
ARKANSAS VIRTUAL ACADEMY	Arkansas Virtual Academy Elementary
	Arkansas Virtual Academy Middle
	Arkansas Virtual Academy High
ESTEM	eSTEM Elementary
	eSTEM Jr. High
	eSTEM High
	eSTEM East Village Elementary
	ESTEM East Village Jr. High
EXALT ACADEMY OF SOUTHEAST LITTLE ROCK	Exalt Academy
FOUNDERS CLASSICAL ACADEMIES OF ARKANSAS	Founders Classical Academy of Bentonville
	Founders Classical Academy High School Rogers
	Founders Classical Academy of WEST Little Rock Elementary
	Founders Classical Academy of West Little Rock
	Founders Classical Academy of Arkansas Rogers
	Founders Classical Academy Elementary Online
	Founders Classical Academy High School Online
FRIENDSHIP ASPIRE ACADEMIES OF ARKANSAS	Friendship Aspire Elementary Academy Little Rock
	Friendship Aspire Academy Downtown Pine Bluff
	Friendship Aspire Academy Hazel Street Pine Bluff
	Friendship Aspire Academy Southeast Middle Pine Bluff
	Friendship Aspire Academy Southeast High
	Friendship Aspire Middle Academy Little Rock
	Friendship Aspire Academy North Little Rock
	Friendship Aspire Academy at Pine Bluff
Friendship Aspire Academy Southeast Pine Bluff	

SYSTEM	SCHOOLS
FUTURE SCHOOL OF FORT SMITH	Future School of Fort Smith
GRADUATE ARKANSAS	Graduate Arkansas
HAAS HALL ACADEMY	Hass Hall Academy
	Haas Hall Academy at the Lane
	Haas Hall Academy Jones Center
	Haas Hall Academy Bentonville
	Haas Hall Academy Fort Smith
HOPE ACADEMY OF NORTHWEST ARKANSAS	Hope Academy of NW AR
IMBODEN AREA CHARTER	Imboden Area Charter
LISA ACADEMY	LISA Academy West Elementary
	LISA Academy West Middle
	LISA Academy West High
	LISA Academy North Elementary
	LISA Academy North Middle
	LISA Academy North High
	LISA Academy Springdale
	LISA Academy Arkansas Hybrid School
	LISA Academy Fayetteville
PREMIER HIGH SCHOOLS OF ARKANSAS	Premier High School of Little Rock
	Premier High School of Texarkana
	Premier High School of Fort Smith
	Premier High School Virtual Academy
PREMIER HIGH SCHOOL OF NORTH LITTLE ROCK	Premier High School of North Little Rock
PREMIER HIGH SCHOOL OF SPRINGDALE	Premier High School of Springdale
SCHOLARMADE ACHIEVEMENT PLACE	Ivy Hill Academy
	Nichols Int Academy of Leadership
	Prodigy Preparatory Academy of Service
WESTWIND SCHOOL FOR PERFORMING ARTS	Westwind School for Performing Arts

SOURCE: <https://dese.ade.arkansas.gov/Offices/office-of-school-choice-and-parent-empowerment/charter-schools>

Expenditures: District- and School-level

The BLR has access to the Arkansas Public School Computer Network (APSCN) system in which expenditure data is entered by the school districts and public charter school systems and maintained by DESE. The BLR maintains the coding system that is used by DESE and maps appropriate expenditures to match matrix line usage. The BLR ensures that the expenditure data reported reconciles with DESE’s Annual Statistical Report.

Beginning with the 2022 Adequacy Study, the BLR tracked spending to the school level as this data has become more available in the years since the federal Every School Succeed Act was adopted in 2015. This allows a more granular picture of how state funds are being used by the districts at the school level.

Two caveats occur that have small impacts on the analyses.

First, some funds are spent at the district level and are not able to be mapped to the individual school level. In categories of spending, such as technology, where district level spending is significant, no

attempt is made to analyze expenditures at the school level. For the quintile analyses, the quintile into which the district falls is used.

The second caveat occurs because of the increasing presence of pre-kindergarten programs (Pre-K) within public elementary schools. Pre-K is not considered an adequacy expense, so those expenditures historically have not been considered in adequacy analyses. Historically this was easier to do because the state had a handful of stand-alone Pre-K programs with their own LEAs. In 2023, 121 schools had preschool programs combined with kindergarten up to grade 6 in their schools. DESE tracked spending but not enrollment for the preschool students; however, the spending for Pre-K purposes was not separated out from the remainder of the schools' spending. Therefore, whenever spending could be pinpointed to Pre-K expenditures, they are noted in the report.

Minority Quintiles

Schools are identified by which 20 percent of schools they fall in according to the percentage of minority (all other than white) students enrolled in the 2021 school year. Percent values below have been rounded to the nearest tenth percent, which accounts for occasional overlap.

District Values

- Minority Quintile 1** contains schools with minority enrollment levels of **2.0% to 7.4%**
- Minority Quintile 2** contains schools with minority enrollment levels of **7.5% to 14.3%**
- Minority Quintile 3** contains schools with minority enrollment levels of **14.8% to 29.5%**
- Minority Quintile 4** contains schools with minority enrollment levels of **29.6% to 57.6%**
- Minority Quintile 5** contains schools with minority enrollment levels of **59.1% to 99.7%**

School Values

- Minority Quintile 1** contains schools with minority enrollment levels of **0.04% to 10.2%**
- Minority Quintile 2** contains schools with minority enrollment levels of **10.3% to 22.5%**
- Minority Quintile 3** contains schools with minority enrollment levels of **22.6% to 43.1%**
- Minority Quintile 4** contains schools with minority enrollment levels of **43.1% to 68.7%**
- Minority Quintile 5** contains schools with minority enrollment levels of **68.8% to 100%**

Free and Reduced-Price Lunch (FRL) Quintiles

Schools are identified by which 20 percent of schools they fall in according to the percentage of free and reduced-price lunch (FRL) students enrolled in the 2021 school year. Percent values below have been rounded to the nearest whole number, which accounts for occasional overlap.

District Values

- FRL Quintile 1** contains schools with FRL levels of **8.3% to 50%**
- FRL Quintile 2** contains schools with FRL levels of **50.2% to 61.6%**
- FRL Quintile 3** contains schools with FRL levels of **62.1% to 71.7%**
- FRL Quintile 4** contains schools with FRL levels of **71.7% to 75.4%**
- FRL Quintile 5** contains schools with FRL levels of **75.5% to 89.7%**

School Values

- FRL Quintile 1** contains schools with FRL levels of **none to 45.5%**
- FRL Quintile 2** contains schools with FRL levels of **45.5% to 59.2%**
- FRL Quintile 3** contains schools with FRL levels of **59.3% to 70.1%**

FRL Quintile 4 contains schools with FRL levels of **70.1% to 78.9%**.

FRL Quintile 5 contains schools with FRL levels of **78.9% to 98.7%**.

School Letter Grade Categories

Arkansas Code Annotated § 6-15-2101 *et seq.* lays out the state’s school rating system (also known as the letter grade system). The school rating system must be a multiple-measure approach including:

- Academic achievement on the annual statewide student assessment;
- student growth on the annual statewide student assessment;
- school-level graduation rate or rates; and
- English-learner progress or growth in acquiring English.

In addition, the rating system must consider at least one of the following indicators:

- Closing the achievement gap;
- academic growth of student subgroups (economically disadvantaged students, students from major racial and ethnic groups, English learners, and students with disabilities);
- the percentage of grade 9 cohort with on-time completion of credit attainment at the end of grade 9;
- equity in resource allocation;
- the percentage of students who earn;
 - Advanced Placement credit;
 - concurrent credit;
 - International Baccalaureate credit; or
 - industry-recognized certification that leads to articulated or concurrent credit at a postsecondary institution;
- student access to multiple flexible learning continua;
- student access to preschool offered by the public school district;
- the proportional percentage of qualified educators who hold a National Board for Professional Teaching Standards certification or have an advanced degree beyond their bachelor’s degree;
- public school district and community partnerships.

The statute directs DESE to promulgate rules to implement the rating system. Under DESE rules, the School Rating System uses the ESSA School Index, which consists of the following indicators:

- Weighted achievement;
- School Mean Growth plus English Learner Growth:
 - Content growth (ELA and math growth scores combined for each student);
 - English Learner progress to English Language Proficiency at a rate that is proportional to number of English Learners;
- Adjusted Cohort Graduation Rate:
 - Four-year Adjusted Cohort Graduation Rate;
 - Five-year Adjusted Cohort Graduation Rate;
- School Quality and Student Success.

The **School Quality and Student Success indicator** is based on the following chart:

Indicator	Grade Level or Cohort for Points Available	Points for Student
Student Engagement	Grades K -11	Point based on Chronic Absence (CA) risk level: CA<5% = 1.0 Point 5<=CA < 10% = 0.5 Point CA >=10% = 0.0 Point
Science Achievement	Grades 3 – 10	Ready or Exceeds = 1.0 Point Close or Not Ready = 0.0 Point
Science Growth	Grades 4 – 10	Using ACT Aspire Science Value-Added Score Percentile Rate VAS PR ≥ 75 = 1.0 Point 25 ≤ VAS PR < 75 = 0.5 Point VAS PR ≤ 25 = 0.0 Point
Reading at Grade Level	Grades 3 – 10	Ready or Exceeds = 1.0 Point Close or Not Ready = 0.0 Point
ACT	Grade 12 Cycle 7 Enrollment	Best ACT Composite Score ≥ 19 = 1.0 Point Use best ACT score from prior 3 years.
ACT Readiness Benchmark	Grade 12 Cycle 7 Enrollment	ACT Reading ≥ 22 = 0.5 point ACT Math ≥ 22 = 0.5 point ACT Science ≥ 23 = 0.5 point Use best ACT score from prior 3 years for each subject
GPA 2.8 or better on 4.0 scale	Grade 12 Cycle 7 Enrollment	High school final GPA ≥ 2.8 = 1.0 Point
Community Service Learning Credits Earned	Grade 12 Cycle 7 Enrollment	1 or more SL credits earned = 1.0 Point Act 648 of 1993 course #496010 or other state approved courses Credits earned at any time during grades 9 - 12
On-time Credits	Grades 9 -11	Grade 9 completed ≥ 5.5 credit = 1.0 Point Grade 10 completed ≥ 11.0 credits = 1.0 Point Grade 11 completed ≥ 16.5 credits = 1.0 Point
Computer Science Course Credits Earned	Grade 12 Cycle 7 Enrollment	Credits earned ≥ 1 = 1.0 Point Credits earned at any time during grades 9 - 12
Adv. Placement / Intl. Baccalaureate or Concurrent Credit Courses (ACE included)	Grade 12 Cycle 7 Enrollment	Credits earned ≥ 1 = 1.0 Point Credits earned at any time during grades 9 - 12

After each of the indicators is calculated, they are weighed according to this chart:

Component	Weight of Indicator within Index Grades K – 5 & 6 - 8	Weight of Indicator within Index High Schools
Weighted Achievement Indicator	35%	70% total with Weighted Achievement accounting for half (35%) and School Growth Score accounting for half (35%)
Growth Indicator Academic Growth English Language Progress	50%	

Progress to English Language Proficiency	Weight of indicator in School Value-Added Growth Score is proportionate to number of English Learners	Progress to English Language Proficiency	Weight of indicator in School Value-Added Growth Score is proportionate to number of English Learners
Graduation Rate Indicator 4-Year Adjusted Cohort Rate 5-Year Adjusted Cohort Rate	NA		15% total 4-Yr = 10% 5-Yr = 5%
School Quality and Student Success Indicator	15%		15%

The result is the ESSA School Index for the school. To figure the letter grades, the Department uses the rankings listed in the table to the right.

Letter Grade	Elementary	Middle School	High School
A	79.26 <= Score	75.59 <= Score	73.22 <= Score
B	72.17 - 79.25	69.94 - 75.58	67.96 - 73.21
C	64.98 - 72.16	63.73 - 69.93	61.10 - 67.95
D	58.09 - 64.97	53.58 - 63.72	52.95 - 61.09
F	Score < 58.09	Score < 53.58	Score < 52.95

Size Categories

Several factors influenced the grouping of school districts and charter systems by size. Because school districts with enrollments of 350 must receive a minimum school size waiver to operate, districts and charter systems with enrollments of 350 or less became the first category. The next category of 351-500 was selected since the matrix funds districts and charter systems based on a prototypical school district of 500 students. Subsequent enrollment categories were chosen to group similar numbers of districts together.

- Size Category 1** contains districts with **0 to 350 students**.
- Size Category 2** contains districts with **351 to 500 students**.
- Size Category 3** contains districts with **501 to 750 students**.
- Size Category 4** contains districts with **751 to 1,000 students**.
- Size Category 5** contains districts with **1,001 to 1,500 students**.
- Size Category 6** contains districts with **1,501 to 2,500 students**.
- Size Category 7** contains districts with **2,501 to 5,000 students**.
- Size Category 8** contains districts with **5,001 to 25,000 students**.

Urban/Rural Categories

Schools are identified as urban or rural using the classification and criteria established by the National Center for Educational Statistics (NCES). The NCES locale framework is composed of four basic types (City, Suburban, Town, and Rural), and each contains three subtypes. The framework relies on standard urban and rural definitions developed by the U.S. Census Bureau.

The NCES locales can be fully collapsed into a basic urban–rural dichotomy, or expanded into a more detailed collection of 12 distinct categories. These subtypes are differentiated by size (in the case of City and Suburban assignments) and proximity (in the case of Town and Rural assignments).

Schools in Arkansas are assigned to 11 of the 12 NCES locale codes. None of the schools within the state are assigned a locale code of City- Large (11), because the population must be 250,000 or more to receive that code.

The next table provides the locale codes assigned to schools in Arkansas and urban/rural designation mapped to each one.

Locale Code	Locale	Urban/Rural
12	City: Midsize	Urban
13	City: Small	Urban
21	Suburb: Large	Urban
22	Suburb: Midsize	Urban
23	Suburb: Small	Urban
31	Town: Fringe	Urban
32	Town: Distant	Rural
33	Town: Remote	Rural
41	Rural: Fringe	Rural
42	Rural: Distant	Rural
43	Rural: Remote	Rural