



# EXHIBIT D2



## The Pathway to Success-Ready Graduates

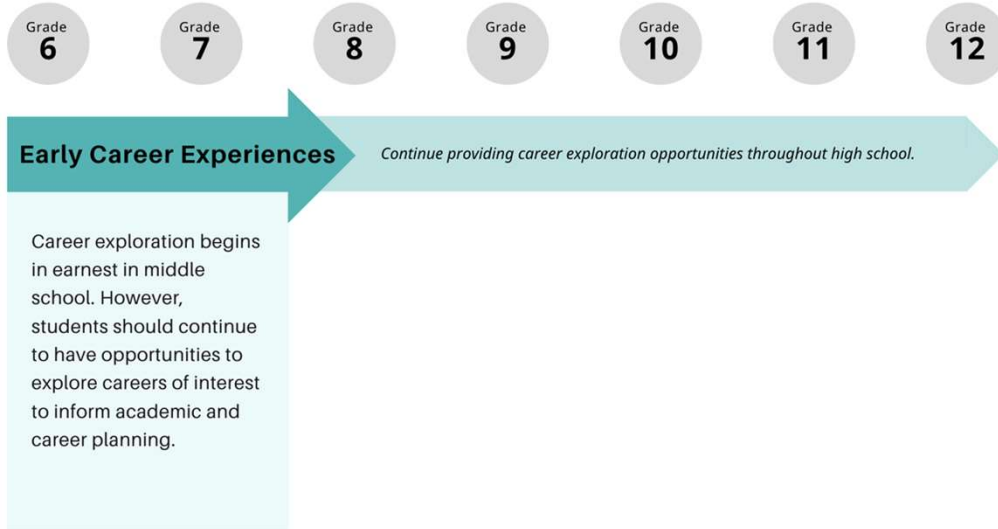
1

**Together, the Arkansas LEARNS and ACCESS Acts modernize education to ensure students are success-ready and aligned with workforce needs—opening pathways to prosperity for every Arkansan.**



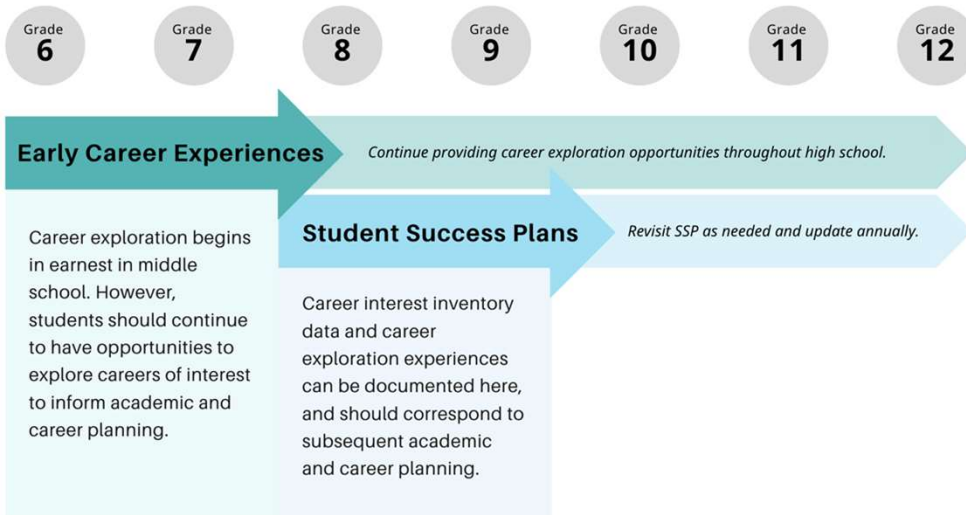
2

# Vision of a Success Ready AR Graduate



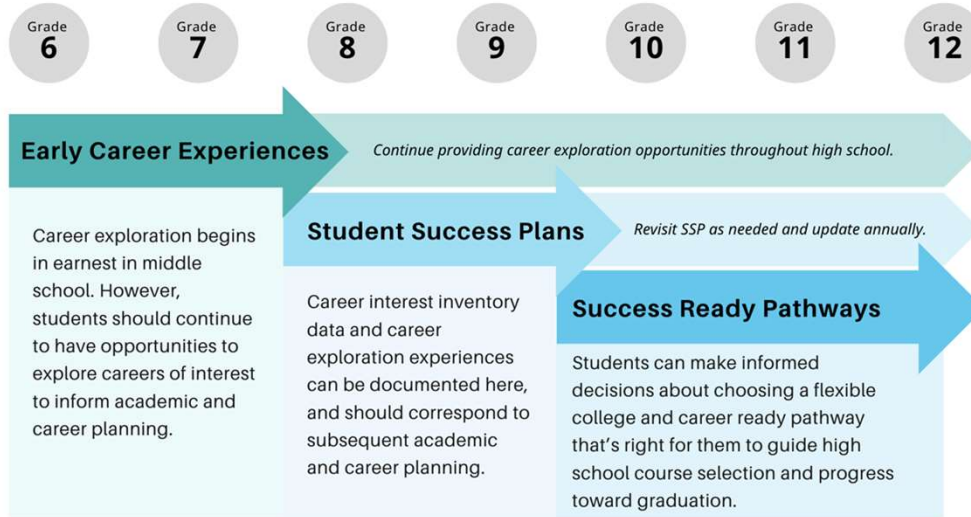
3

# Vision of a Success Ready AR Graduate



4

# Vision of a Success Ready AR Graduate



5

# Vision of a Success Ready AR Graduate



6

## Success Ready Graduates

### Enlistment



### Enrollment



### Employment



7

## Success-Ready Pathways

- Accounting
- Advanced Manufacturing
- Agriculture Power, Structural & Technical Systems
- Animal Systems
- Arkansas Military Service and Security
- Automotive Service Technology
- Banking
- Business Finance
- Computer Science: Data Analytics
- Computer Science: Information Technology & Security
- Computer Science: Software Development
- Construction
- Criminal Justice
- JROTC
- Management
- Medium/Heavy Truck Technology
- Nursing Services
- Plant Systems
- Pre-Educator
- Pre-Engineering
- Retail Management
- Supply Chain and Logistics
- Welding



8

# Merit

## 1. Complete a Success-Ready Pathway with 3 sequential credits

## 2. Demonstrate Readiness via one of the following:

- [Identified High Wage, High Demand Industry-Recognized Credential](#)
- 12 or more post secondary credits
- Arkansas Certified Pre-Apprenticeship leading to a Registered Apprenticeship
- ASVAB Score of 31 and completion of approved Enlistment Pathway
- [Seal of Biliteracy](#)



9

# Distinction

## 1. Complete Success-Ready Pathway with 3 sequential credits

## 2. Demonstrate Readiness via one of the following:

- Technical Certificate or higher (e.g., Associate's Degree)
- ASVAB Score of 31 and currently enlisted in the Armed Forces
- Youth Apprenticeship leading to a Registered Apprenticeship



10

## Current Reality

**Class of 2024**  
Merit & Distinction Graduates

**9,028 of 36,305**

**Class of 2028**  
First Cohort to meet full requirements



11

## 2024-2025 Data

### Middle School (6-8) CTE Enrollment

- 106,399 Students

### High School (9-12) CTE Enrollment

- 252,687 Students



12

## 2024-2025 Data

### **CTE Concentrators (Completed two courses in a pathway)**

- **73,118 Students**

### **CTE Completers (Completed three courses in a pathway)**

- **32,384 Students**



13

## 2024-2025 Data

### **Secondary Career Center Fall Enrollment**

- **10,668 Students**

### **Secondary Career Center Spring Enrollment**

- **9,657 Students**



14

## 2024-2025 Data

### Industry Certifications Earned

- **19,324 Certifications**

### Post-Secondary Credentials Earned

- **2,552 Certificates of Proficiency**
- **137 Technical Certificates**
- **5 Associate Degrees**



15

## Questions?

Ross White, Director

501-442-5277

[ross.white@ade.arkansas.gov](mailto:ross.white@ade.arkansas.gov)



16