

ARKANSAS

READY  FOR LEARNING



DIVISION OF ELEMENTARY
& SECONDARY EDUCATION

Arkansas Instructional Guidance for Extended Year AMI

Supporting Remote Learning in Arkansas





BACK-TO-SCHOOL **PLAYBOOK**

ADDRESSING UNFINISHED LEARNING

The image features a dark blue chalkboard background with various educational icons drawn in white and light blue. These icons include musical notes, a pi symbol (π), gears, a globe, a computer monitor with a mouse cursor, a graduation cap, and an open book. Several red 'X' marks are scattered across the board. The text 'BACK-TO-SCHOOL' is written in red, arched letters on the left, and 'PLAYBOOK' is written in large, blue, dashed-outlined letters in the center. At the bottom, the text 'ADDRESSING UNFINISHED LEARNING' is written in white, bold, sans-serif font.

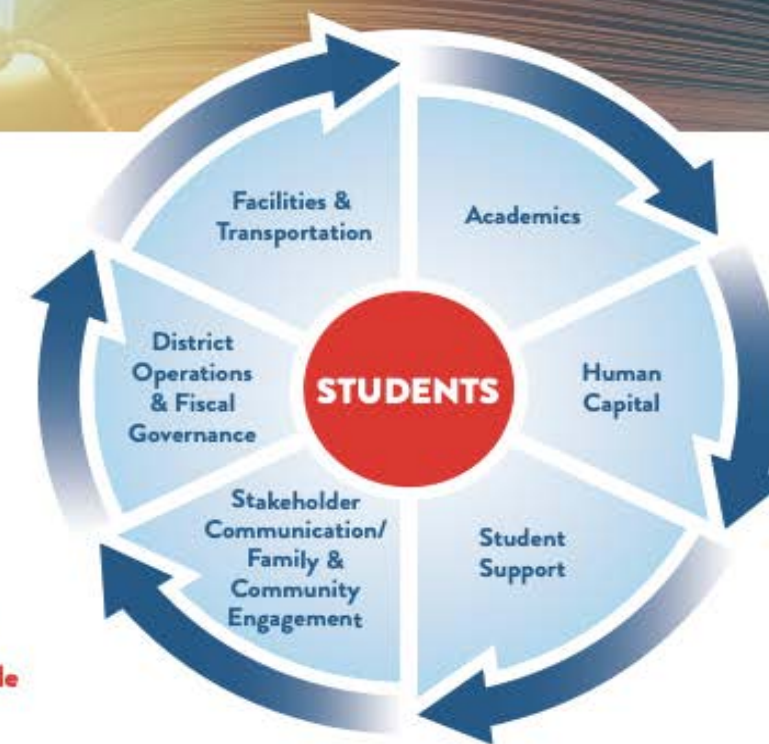


DIVISION OF ELEMENTARY & SECONDARY EDUCATION

ARKANSAS

READY FOR LEARNING

We believe learning can happen anytime, anywhere. The COVID-19 pandemic put this belief to the test, and we are resolute in our commitment to the continuity of learning. Our **vision** to transform Arkansas to lead the nation in student-focused education is unwavering. In fact, it is more important now than ever before. As described in the Arkansas ESSA Plan, the Division of Elementary and Secondary Education remains committed to the established process of continuous improvement through the six principal systems of public education. In the wake of COVID-19, Arkansas schools are now challenged to reassess their school and district plans. Arkansas has a strong foundation, and we have identified three key factors necessary for Arkansas to be *Ready for Learning*: **blended learning, guaranteed and viable curriculum, and a student-focused approach.**



BLENDING LEARNING

Going forward, all Arkansas schools will implement blended learning systems that deliver curriculum, instruction and assessment through multiple methods. This type of system incorporates both on-site teacher interaction and off-site instruction, including new content, through streamed or uploaded lessons and activities if extended school closures become necessary. Building a statewide system of blended learning will ensure that all K-12 students are connected to high quality instruction and engagement, regardless of location.

SCHOOL-LEVEL PLANS & DISTRICT SUPPORT

We should all prepare for a very different 2020-21 school year. To ensure learning continues throughout the year, even remotely, Arkansas schools will use the established school-level planning process, Plan-Do-Check. Our state's accountability and support system already includes a process for school-level planning and district support. That process offers flexibility for schools to continually revise plans and adjust day-to-day operations to ensure that student needs are being met. These plans outline expectations and provide communication for the public.



DIVISION OF ELEMENTARY & SECONDARY EDUCATION

This statewide system will be much more than just a response to COVID-19. In the long term, we can use it to accelerate Arkansas toward flexible learning models, develop curriculum resources for schools and provide training for parents on how to best assist students. Learn more at dese.ade.arkansas.gov.

FLEXIBLE

PRACTICAL

ADAPTABLE

INCLUSIVE

ACCESSIBLE

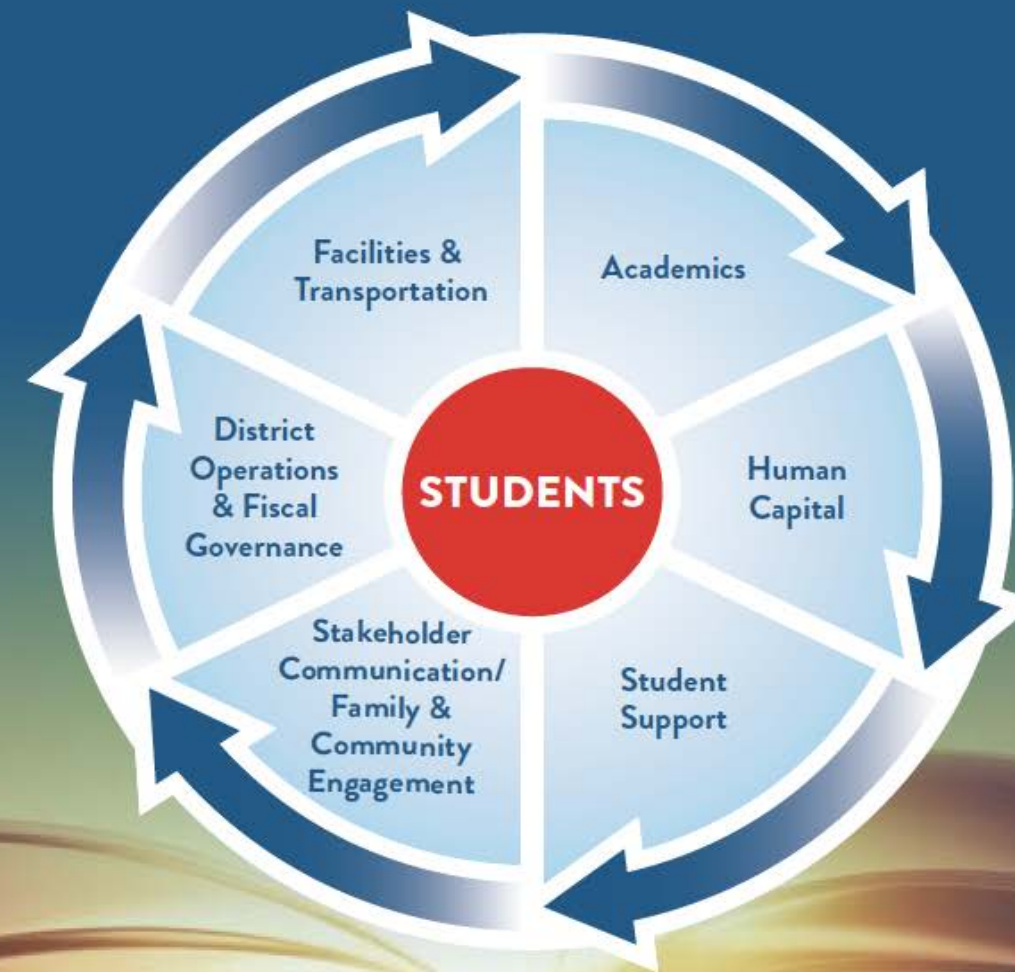
“...all policy considerations for the coming school year should start with a goal of having students physically present in school”

[-American Academy of Pediatrics](#)

COVID-19 Planning Considerations: Guidance for School Re-entry

ARKANSAS

READY FOR LEARNING



What is Arkansas Ready for Learning?

- ***A plan*** for return to onsite instruction that allows flexibility for learning options in case interruptions occur.
- **Support** for districts to *prepare* for the start of the new school year.
- ***An opportunity*** for teachers, parents, students and the community to engage in the planning with school districts.

What do we expect from every district?

1. A **system** of *Blended Learning* that allows the student to continue learning grade level or content standards through an educational plan that leverages both technology-based and face-to-face instructional approaches.
2. **Flexibility** to implement onsite or remote teaching and learning and to pivot as necessary.
3. **Support** for districts, teachers, parents and students to **innovate and adapt** to new learning opportunities.

Why Arkansas Ready for Learning?

Because we believe that all students can learn anytime, anywhere, if given the right supports.

Statewide Support for Blended Learning

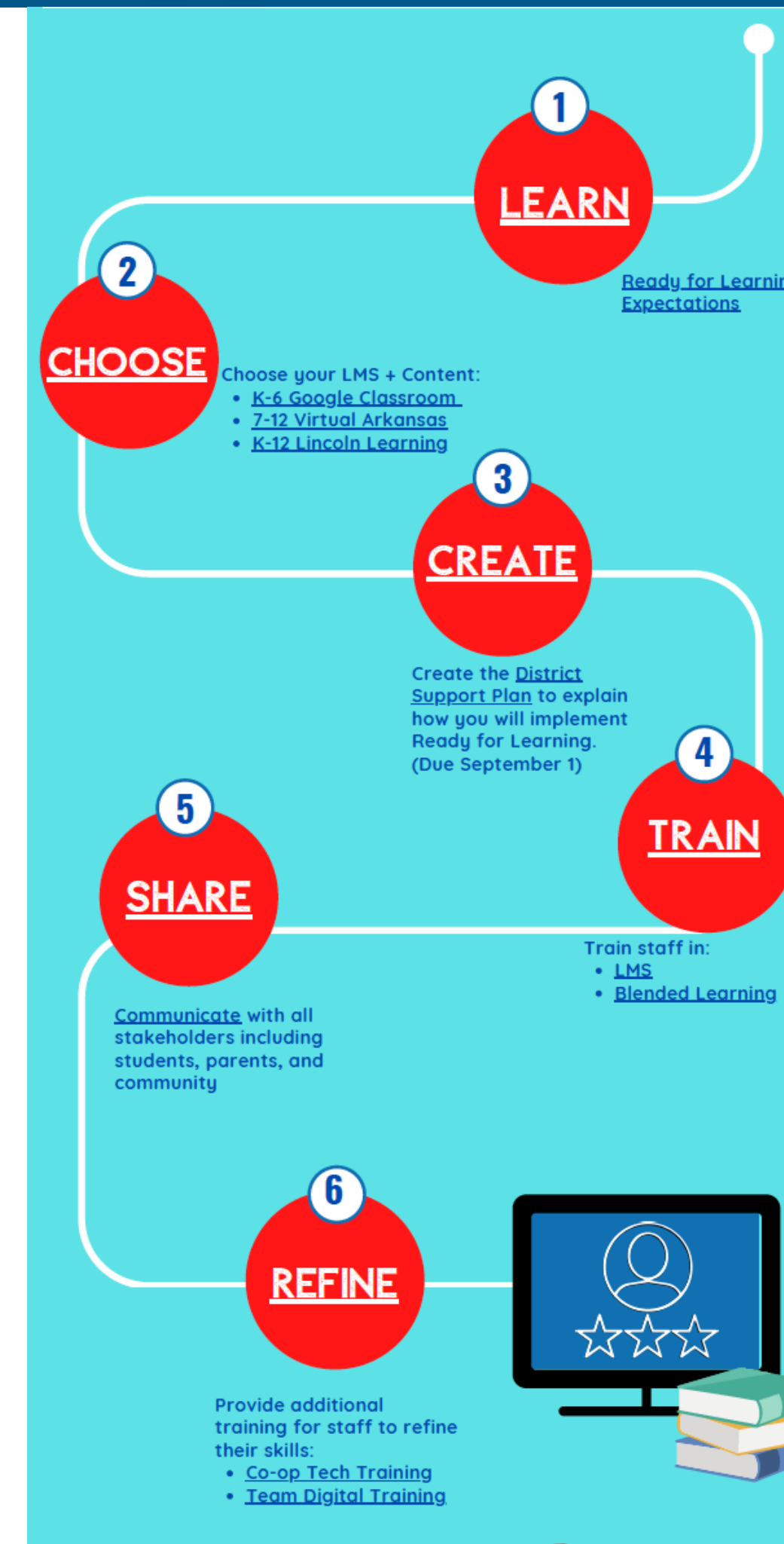
State Supported Options: Districts may choose to use the state-provided **digital content** options and **Learning Management Systems** through approved digital providers. Districts must provide technology access and connectivity options

- K-12 digital content and LMS option paid with state CARES Act funds
- CTE options for digital content and LMS paid with state CARES Act funds
- Digital content and LMS options through Virtual Arkansas or Home Grown options
- Training for Blended Learning available through Team Digital and Office for Innovation in Ed

Diagnostic Assessment: Use of a diagnostic assessment to provide instructional support for educators.

- State Supported Options: Districts may choose to expand their K-2 assessment choice to include grades 3-8 to provide adaptive and diagnostic assessments for instructional purposes only.

Arkansas Ready for Learning Blended Learning Decision Pathway

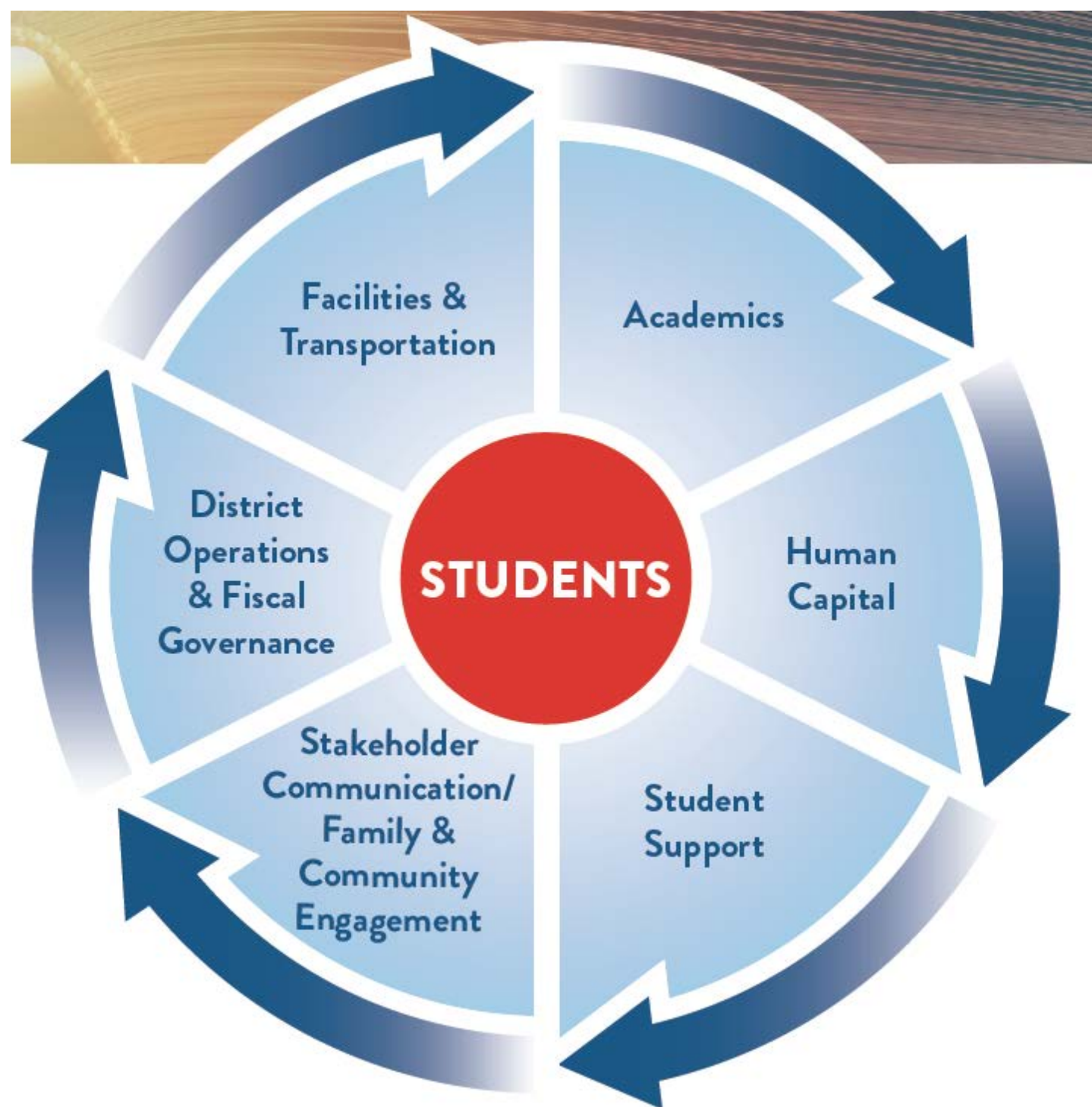


ARKANSAS READY FOR LEARNING PLAN:

Ready for Learning Expectations		District Plan
<ul style="list-style-type: none"> Ensure the continuity of teaching and learning by providing: 	<ul style="list-style-type: none"> a guaranteed and viable curriculum that includes: <ul style="list-style-type: none"> blended learning (K-12), and diagnostic assessments (K-8) 	
	<ul style="list-style-type: none"> Identify how to address unfinished learning from the prior year by using: <ul style="list-style-type: none"> Arkansas Playbook: Planning for Re-engagement district-developed resources 	
	<ul style="list-style-type: none"> Utilize a Learning Management System Schedule teacher training for how to use the LMS Schedule teacher training for blended learning (delivery of instruction) Provide support for parents and students Family and Community Engagement Plan Support Parent Page on DESE Website Provide a communication plan for interacting with parents, students, and the community 	



Next Steps



- Additional Details for the return to onsite instruction
- Continued collaboration with the ADH
- Statewide Guiding Coalition continued work
- Continued meetings with stakeholders