

**REPORT OF THE
LEGISLATIVE TASK FORCE ON
INTERMODAL TRANSPORTATION AND COMMERCE**

**presented to the
House Public Transportation Committee
Senate Committee on Transportation, Technology & Legislative Affairs**

November __, 2016

TABLE OF CONTENTS

	<u>Page</u>
Task Force Membership	1
Introduction	2
Study Issues.....	3
Review of Transportation Agencies	3
Overview of Various Transportation Modals and Stakeholders	4
Task Force Recommendations	7
Conclusion	8
Appendix 1 – Act 166 of 2015	A 1
Appendix 2 – Organizational Charts.....	A 2
Appendix 3 – American Recovery and Reinvestment Act Project Employment Information	A 3
Appendix 4 – Transportation Department's Modal Responsibility	A 4

TASK FORCE MEMBERS ROSTER

LEGISLATIVE TASK FORCE ON INTERMODAL TRANSPORTATION AND COMMERCE	
MEMBER	AFFILIATION
Senator Eddie Joe Williams, Co-Chair	Arkansas State Senate
Representative Mike Holcomb, Co-Chair	Arkansas State House of Representatives
Representative Marcus Richmond	Arkansas State House of Representatives
Representative Mathew Pitsch	Arkansas State House of Representatives
Senator Jake Files	Arkansas State Senate
Senator Greg Standridge	Arkansas State Senate
Bryan Day	Executive Director, Little Rock Port Authority
David Choate	Arkansas-Oklahoma Port Operators Association
Gene Higginbotham	Executive Director, Arkansas Waterways Commission
Scott Bennett, Director	Director, Arkansas State Highway and Transportation Department
Kenneth Burleson	Attorney, Natural Resources and Mineral Leasing
Butch Rice	President, Arkansas Trucking Association
Craig Christiansen	Railroad Industry
Bob Freeman	Mayor, City of Van Buren, Local Regional Intermodal Transportation Authority
John Lipton	Chairman, Southeast Arkansas Regional Intermodal Transportation
Jerry Chism	Director, Aeronautics Department
Jeff Hawkins	Executive Director, Northwest Arkansas Regional Planning Commission
Kevin Sexton	Senior Manager, Community Development, Arkansas Economic Development Commission

INTRODUCTION

The Legislative Task Force on Intermodal Transportation and Commerce was originally created by passage of Act 1430 of 2013 and re-established by Act 166 of 2015 (Appendix 1).

The charge of the Task Force was to:

- 1) Explore the creation of a new Arkansas Department of Transportation (DOT) that has combined responsibility for highways, waterways and ports, rail, and aeronautics
- 2) Explore the following specific recommendations relating to intermodal transportation and commerce for review, consideration, and implementation by the General Assembly
 - a) Identify the relevant constitutional and legislative constraints involved in the creation of a new Arkansas Department of Transportation with regard to the constitutionally created State Highway Commission and the existing legislatively created Arkansas Waterways Commission and Arkansas Department of Aeronautics, and the possibility of modal divisions
 - b) Identify funding sources for a new Arkansas Department of Transportation to promote and develop a coordinated multimodal transportation system
 - c) Develop a plan for a seamless and cost-effective transition into the newly structured Arkansas Department of Transportation
 - d) Determine the division or agency responsible for intermodal development and oversight
 - e) Establish a coordinating council for regional intermodal transportation authorities in order to provide guidance, oversight, and coordination and promote multimodal collaboration
 - f) Explore options to leverage existing modal assets for development of economic opportunities
- 3) Report its findings and recommendations no later than December 1, 2016, to the House Committee on Public Transportation and the Senate Committee on Public Transportation, Technology, and Legislative Affairs.

Act 166 expanded the Task Force from 15 to 18 members to include the Director of the Department of Aeronautics, a representative from a metropolitan planning organization, and a representative from the Arkansas Economic Development Commission.

In addition to members of both the Arkansas State Senate and House of Representatives and their respective transportation committees, the 18-member Task Force includes the Directors of the Arkansas Department of Aeronautics, Arkansas State Highway and Transportation Department, and Arkansas Waterways Commission; designees of the Commissioner of State Lands and Arkansas Economic Development Commission; representatives of the Arkansas-Oklahoma Port Operators Association, Arkansas Trucking Association, Southeast Arkansas Regional Intermodal Facility and Regional Intermodal Transportation Authorities, Northwest Arkansas Regional Planning Commission, and the railroad industry.

Having met to perform the assigned tasks, the Task Force now submits this Report pursuant to Act 166. In accordance with the Act, this Task Force will expire the day after submission of this Report.

STUDY ISSUES

Since the passage of Act 166, the Task Force has met several times, each time hearing from transportation authorities and members of various intermodal authorities in order to develop a clear understanding of issues and concerns that are particular to each, as well as those that are shared. Over the course of those meetings, the Task Force received testimony primarily on the following areas:

1. structure and functionality of a potential Arkansas Department of Transportation
2. maintaining respective funding streams, authority, and autonomy of each commission
3. funding sources, coordination, location, and ability to make decisions quickly
4. importance of maintaining legislative oversight
5. development of a plan for a seamless and cost-effective transition into the newly formed Department of Transportation
6. determine the division or agency responsible for intermodal development and oversight
7. dedicated source of revenue for rail or by private investors
8. increased use of Arkansas's public roads
9. promote and develop a coordinated multimodal transportation system
10. need for high speed transportation
11. focus on connectivity and communication to move from multi-modal to intermodal
12. determine future needs of Arkansas's transportation infrastructure
13. consider pipeline and transmission lines as a means of transportation
14. transportation for coal mines and lumber companies
15. McClellan-Kerr Arkansas River Navigation Systems' economic impact to the state

REVIEW OF TRANSPORTATION AGENCIES

The Task Force discussed whether Arkansas could operate more efficiently by having all modes of transportation under one umbrella. Other issues included how such an organization would be structured, given that parts are constitutional and others are statutory. In addition, each entity has designated funds whose already inadequate sources would be spread even thinner.

Testimony presented to the Task Force included agency overviews by the Department of Aeronautics, State Highway and Transportation Department, and the Waterways Commission, as these agencies would fall under the purview of one organization. Related

issues were discussed including, but not limited to, funding, coordination, and location of facilities. Organizational charts for these agencies are attached as Appendix 2.

The Task Force also reviewed organizational structures of various Department of Transportation's (DOTs), all of which have highway responsibilities. DOTs are required to coordinate with other modes. Less than half of the DOTs have a commission structure. Arkansas is the only state that has non-elected commissioners with 10-year terms.

States with highway departments that are not called a DOT are Arkansas, Kentucky, Nebraska, and Vermont. While federal law requires a long-range intermodal transportation plan, no funding is provided. Appendix 4 depicts each transportation department's modal responsibility.

Since the latter part of the previous decade, AHTD is required to submit an economic development plan under the American Recovery and Reinvestment Act (ARRA). AHTD's ARRA Project Employment Information is included as Appendix 3. This report contains employment information from contractors that performed work on the ARRA projects.

OVERVIEW OF VARIOUS TRANSPORTATION MODALS & STAKEHOLDERS

Arkansas State Highway and Transportation Department

construct, maintain and operate the state highway system; coordinate all transportation planning in the state; administer federal rail, public transportation, and traffic safety programs. Handles planning only for rail – has no authority over or funding for rail

Employees: 3,634

Commission: 5 members appointed by the Governor for 2, 4, 6, 8 and 10-year terms

Total Appropriation: \$1,734,610,000

Arkansas Aeronautics Department

inspect and license airports and air navigation facilities, encourage the establishment and planned expansion of airports, promote aviation safety/security, administer state airport aid program; coordinate aviation planning efforts between local, state, and federal (FAA) governments; administer the state's airport aid program, provide services to pilots, flight instructors, and create and improve airports to better serve Arkansas communities and industry

Employees: 5

Commission: 7 members appointed by the Governor for 5-year terms

Total Appropriation: \$15,626,734 - special revenue only

Arkansas Waterways Commission

develop, promote, and protect waterborne transportation in Arkansas; promote economic development for ports on the five commercially navigable rivers of the state; coordinate and cooperate with various local, state, and federal agencies to develop Arkansas waterways as an important economic resource for Arkansas

Employees: 3

Commission: 7 members appointed by the Governor for 7-year terms

Total Appropriation: \$255,791- general revenues

Regional Intermodal Transportation Authorities

maximize the use of all forms of transportation – rail, barge, air, interstate, etc., to reduce shipping costs and increase service options for regional businesses and industries

Railroad Industry

traffic base includes forest-based products, chemicals, lumber, food, iron, steel, agriculture, aggregates, aluminum, building materials, pulp-board, plastics, grain, gypsum board (dry wall), cotton, coal, sand, clay, soda ash, rubber, petroleum products, medium density fiberboard, frozen poultry, alcoholic beverages, peanuts, feed, minerals, glass, cement, and food products

Arkansas-Oklahoma Port Operators Association

promote and encourage cooperation between ports, stimulate interest in use of regional water transportation systems; inform the public on water transportation capabilities and limitations; gather and disseminate information for use by association members

Little Rock Port Authority

utilize the resources of the Port Industrial Park, River Terminal, Port Railway, Foreign Trade Zone and Slackwater Harbor to create opportunity and high paying employment

Trucking Industry

protect the interests of trucking companies, promote the dynamics of trucking, and serve members of the trucking industry to help grow their business and profits

U.S. Army Corps of Engineers

plan, design, build and operate locks and dams; design and construct flood protection systems, military facilities, and environmental regulation and ecosystem restoration

U.S. Department of Transportation Maritime Administration

promote use of waterborne transportation, maintain the health of the merchant marine, and maintain a fleet of cargo ships

U.S. Coast Guard

military force of maritime professionals with a local, regional, national, and international presence; maritime safety, security, and environmental stewardship

Mississippi River Commission

recommend policy and work flood control, navigation, and environmental projects on the Mississippi River, programs, study/report needed modifications to and conducting semiannual inspection trips and public hearings at various locations along the river

membership: 3 members of the Corps, 1 member of NOAA and 3 civilians all appointed by the U.S. President

National Oceanic and Atmospheric Administration (NOAA)

understand and predict changes in climate, weather, oceans, and coasts; provide reliable information on daily weather forecasts, severe storm warnings, climate monitoring, fisheries management, and coastal restoration; support marine commerce

Cooperation with Various Federal and State Agencies

U.S. Environmental Protection Agency, U.S. Department of Labor, Federal Communications Commission, U.S. Fish and Wildlife Service; Land Commissioners Office, Natural Resources Commission, Historic Preservation, Parks and Tourism

Current Intermodal Facilities:

Southeast Arkansas Regional Intermodal Facilities Authority

- Bradley and Drew Counties
- Cities of Monticello and Warren

Northeast Arkansas Regional Intermodal Facilities Authority

- Lawrence and Randolph Counties
- Cities of Corning, Hoxie, Pocahontas and Walnut Ridge

Western Arkansas Regional Intermodal Authority

- Crawford and Sebastian Counties
- Cities of Fort Smith and Van Buren

Southwest Arkansas Regional Intermodal Authority

- Clark, Montgomery, Nevada, Pike and Dallas Counties
- Cities of Gurdon, Prescott, Glenwood, Caddo Valley, Murfreesboro, Arkadelphia, Amity and Fordyce

River Valley Regional Intermodal Facilities Authority

- Pope County
- City of Russellville

Blytheville/Mississippi County Regional Intermodal Facilities Authority

- Mississippi County
- City of Blytheville

Arkansas River Regional Intermodal Facilities Authority

- Jefferson County
- City of Pine Bluff

TASK FORCE RECOMMENDATIONS

As part of its charge, this Task Force recommends that the following be considered:

1. Change the name of the Arkansas State Highway and Transportation Department to the Arkansas Department of Transportation

The responsibility of the Arkansas State Highway and Transportation Department covers not only highways, but extends to oversight of state and federal transit, and rail coordination and crossing. In addition, while air and water transportation are not included under the Department's authority, the Department is responsible for coordinating and cooperating with the charged entities to ensure that intermodal transportation is considered and managed through the development of the Statewide Long-Range Intermodal Transportation Plan (which includes a freight component) and the Statewide Transportation Improvement Plan. In addition, the Department is responsible for taking the lead in developing the state's bicycle and pedestrian plan, and for the administration of federal grants under the Transportation Alternatives Program.

During the course of discussions it became clear that, for economic development purposes, the name of the Department should be changed to match that of the majority of its counterparts. Only three others, in addition to Arkansas, do not include "Department of Transportation" in their name—the Kentucky Transportation Cabinet, the Nebraska Department of Roads, and the Vermont Agency of Transportation. This is so despite the fact that over half of the nation's transportation departments do not cover all modes of transportation (Appendix 4). In addition, the language in federal law has been updated to reference "State Departments of Transportation" rather than "State Highway Agencies."

Having the Department's name changed to the Arkansas Department of Transportation would, first and foremost, provide a known point of contact for all areas of intermodal development, and allow for expansion of the coordination of efforts with the Aeronautics and Waterways Commissions. Intermodal development is becoming more and more a significant responsibility of state departments of transportation, and Arkansas's needs in that area are no less than any of its neighbors.

Changing the name would bring the Department's profile into the 21st century, recognizing the shift that has occurred over time as additional responsibilities are taken on by transportation agencies. To be one of only four that is not a DOT makes those within the industry wonder what it is that makes us that much different from our peers.

2. Provide \$125,000 per year in funding for each of four Regional Intermodal Transportation Authorities (RITAs) (\$500,000 per year total)

The purpose of RITAs is to expand surface, air, and water transportation facilities in the RITA boundaries. RITAs have a board of directors, the usual broad powers to enter into contracts, borrow money (but not tax), condemn property through eminent domain, and a long list of other related powers.

However, none of those powers may be adequately implemented without appropriate funding to cover costs. There are two different costs associated with the formation and running of a RITA. The first is manpower and facilities. At a minimum, a director, an administrative assistant, and at least one other assistant, along with rent, office equipment, vehicle(s) and other operational expenses require funding. The second cost is associated with matching required for most state and federal grants.

- 3. Maintain independence and the current funding streams of the Arkansas Aeronautics Commission and the Arkansas Waterways Commission**
- 4. Enhance coordination with other transportation modals**
- 5. Create subcommittees of the Senate Transportation, Technology and Legislative Affairs and the House Public Transportation Committees**
subcommittee would meet jointly and monitor abandoned rail lines in the state and determine if the state should purchase the abandoned rail to preserve future economic development opportunities
- 6. Create an Intermodal Jump Start program**
provide funding of \$1.2 million annually over a two-year period to be divided equally between the regional intermodal authorities in the state. Program funding could pass through the Arkansas Waterways Commission. Intermodal Authorities would be required to provide quarterly reports and make an annual presentation to the Transportation Committees detailing the expenditure of funds.

CONCLUSION

The Task Force recognizes there may eventually be a cabinet level transportation agency in Arkansas state government. Creation of a cabinet level entity should not dilute or disrupt operations or revenue sources of each existing component, but may serve as a focal point for economic growth individually and collectively.

Every state is unique in its own particular needs. Many states incorporate transportation, infrastructure, and funding through a Department of Transportation. Some states function with a Secretary of Transportation or equivalent while others function more in the role of lobbyist and liaison for their subordinate agencies. No one state is a model for implementing a DOT in Arkansas.

Arkansas is a *Bridge State* meaning that most of the users on Arkansas's highway systems are just passing through. Increased use of Arkansas's public roads equals greater wear and tear, raising the cost and frequency of maintenance projects as costs increase. The continuing need for alternate sources of funding for maintenance and new construction is ever on the forefront, as the current funding method does not address needs.

Continued consideration of issues facing our state across transportation modes is vital to the continued economic sustainability and expansion of industry in the state.

The Task Force wishes to thank its members and those who provided testimony and guidance throughout the course of its tenure.

Stricken language would be deleted from and underlined language would be added to present law.
Act 166 of the Regular Session

State of Arkansas
90th General Assembly
Regular Session, 2015

A Bill

HOUSE BILL 1258

By: Representatives Pitsch, Baltz, D. Douglas, Hickerson, Jean, Sturch, Wardlaw
By: Senator Files

For An Act To Be Entitled

AN ACT TO RE-ESTABLISH THE LEGISLATIVE TASK FORCE ON
INTERMODAL TRANSPORTATION AND COMMERCE; AND FOR OTHER
PURPOSES.

Subtitle

TO RE-ESTABLISH THE LEGISLATIVE TASK
FORCE ON INTERMODAL TRANSPORTATION AND
COMMERCE.

BE IT ENACTED BY THE GENERAL ASSEMBLY OF THE STATE OF ARKANSAS:

SECTION 1. DO NOT CODIFY. Legislative Task Force on Intermodal
Transportation and Commerce.

(a) The Legislative Task Force on Intermodal Transportation and
Commerce is re-established.

(b) The task force shall consist of the following members who shall be
appointed by July 1, 2015:

(1) One (1) member of the Senate to be appointed as co-chair of
the task force by the President Pro Tempore of the Senate;

(2) One (1) member of the House of Representatives to be
appointed as co-chair of the task force by the Speaker of the House of
Representatives;

(3) Two (2) current or past members of the House Committee on
Public Transportation to be appointed by the Chair of the House Committee on
Public Transportation;

(4) Two (2) current or past members of the Senate Committee on



02-04-2015 12:05:02 DRF041

1 Public Transportation, Technology, and Legislative Affairs to be appointed by
2 the Chair of the Senate Committee on Public Transportation, Technology, and
3 Legislative Affairs;

4 (5) Two (2) members of the Arkansas-Oklahoma Port Operators
5 Association, one (1) to be appointed by the Speaker of the House of
6 Representatives and one (1) by the President Pro Tempore of the Senate;

7 (6) The Executive Director of the Arkansas Waterways Commission
8 or his or her designee;

9 (7) The Director of Highways and Transportation of the Arkansas
10 State Highway and Transportation Department or his or her designee;

11 (8) The Commissioner of State Lands or his or her designee;

12 (9) A representative of the Arkansas Trucking Association to be
13 appointed by the President Pro Tempore of the Senate;

14 (10) A representative of the railroad industry to be appointed
15 by the Speaker of the House of Representatives;

16 (11) Two (2) representatives of a local regional intermodal
17 transportation authority to be appointed by the Commissioner of State Lands;

18 (12) The Director of the Arkansas Department of Aeronautics or
19 his or her designee; and

20 (13) One (1) representative from a metropolitan planning
21 organization in the state to be appointed by the Director of Highways and
22 Transportation of the Arkansas State Highway and Transportation Department.

23 (14) One (1) representative from the Arkansas Economic
24 Development Commission to be appointed by the Executive Director of the
25 Arkansas Economic Development Commission.

26 (c) A vacancy on the task force shall be filled in the same manner as
27 the initial appointment.

28 (d) The Bureau of Legislative Research shall provide staff support for
29 the task force.

30 (e) The task force shall:

31 (1) Explore the creation of a new Arkansas Department of
32 Transportation which will have combined responsibility for highways,
33 waterways and ports, rail, and aeronautics;

34 (2) Explore the following specific recommendations relating to
35 intermodal transportation and commerce for review, consideration, and
36 implementation by the General Assembly:

1 (A) Identify the relevant constitutional and legislative
2 constraints involved in the creation of a new Arkansas Department of
3 Transportation with regard to the constitutionally created State Highway
4 Commission and the existing legislatively created Arkansas Waterways
5 Commission and Arkansas Department of Aeronautics, and the possibility of
6 modal divisions;

7 (B) Identify funding sources for a new Arkansas Department
8 of Transportation to promote and develop a coordinated multimodal
9 transportation system;

10 (C) Develop a plan for a seamless and cost-effective
11 transition into the newly structured Arkansas Department of Transportation;

12 (D) Determine the division or agency responsible for
13 intermodal development and oversight;

14 (E) Establish a coordinating council for regional
15 intermodal transportation authorities in order to provide guidance,
16 oversight, and coordination and promote multimodal collaboration; and

17 (F) Explore options to leverage existing modal assets for
18 development of economic opportunities; and

19 (3) Report its findings and recommendations no later than
20 December 1, 2016, to the House Committee on Public Transportation and the
21 Senate Committee on Public Transportation, Technology, and Legislative
22 Affairs.

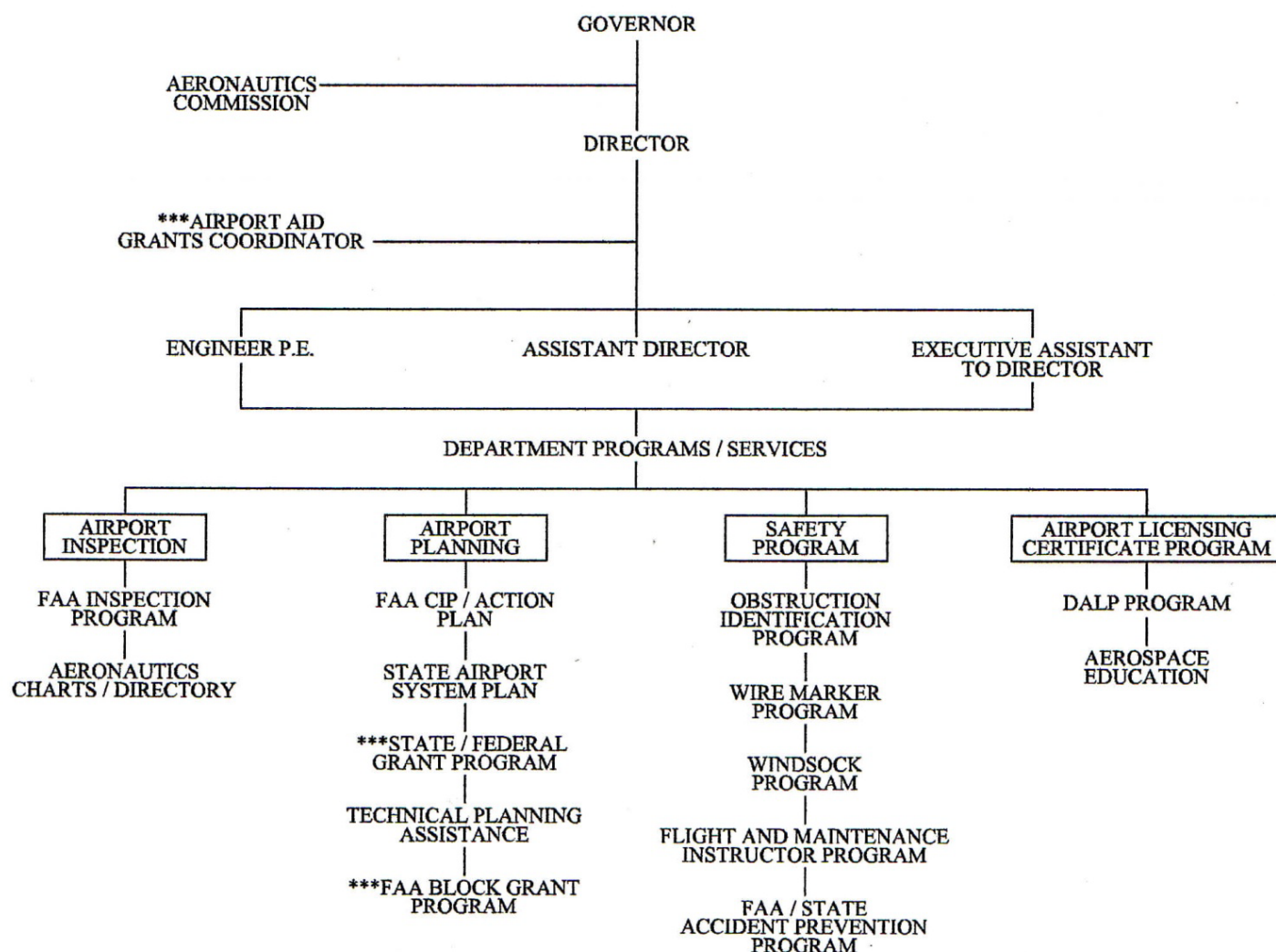
23 (f) Legislative members of the task force shall be paid per diem and
24 mileage in the manner authorized by law for attendance at meetings of interim
25 committees of the General Assembly.

26 (g) Regular meetings will be held monthly through the term of the
27 existence of the task force.

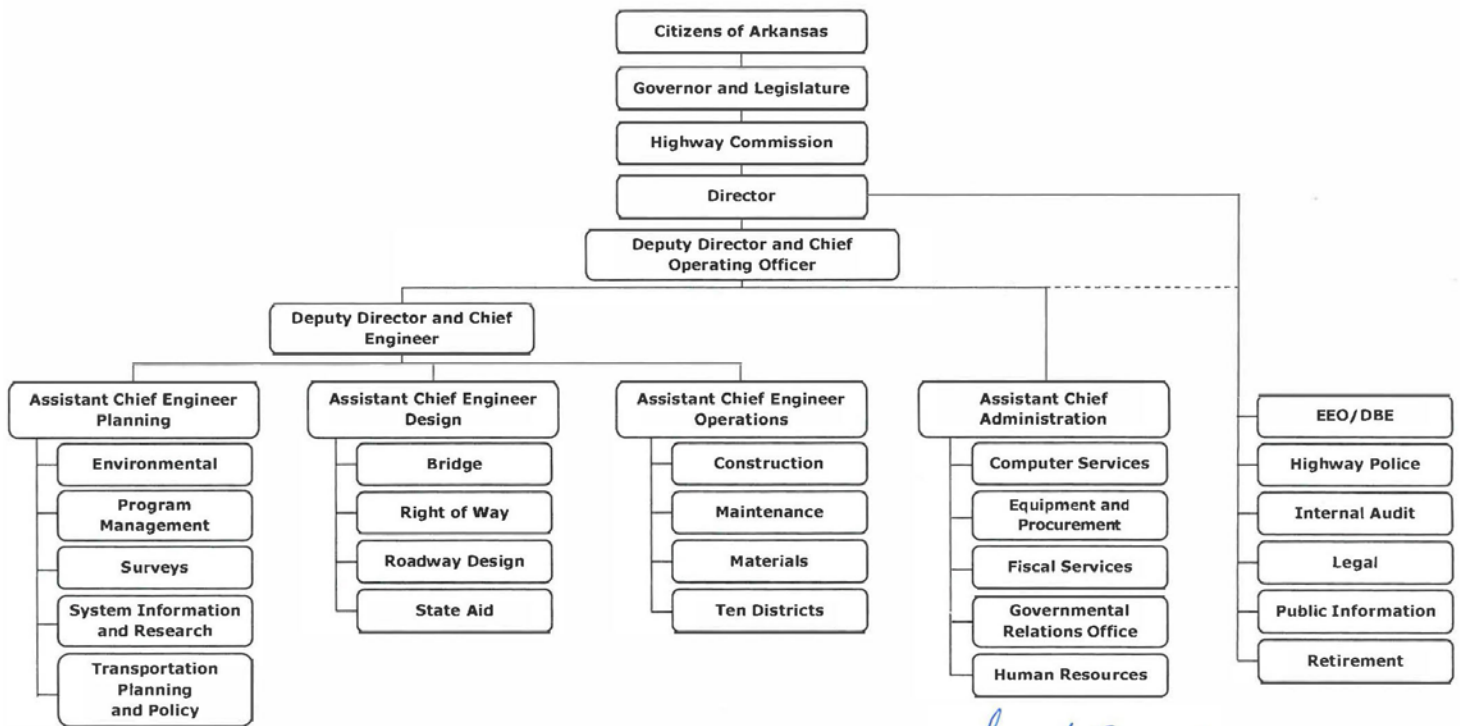
28 (h) The task force shall expire the day after reporting its findings
29 and recommendations under subdivision (e)(3) of this section.

30
31
32 **APPROVED: 02/23/2015**
33
34
35
36

**DEPARTMENT OF AERONAUTICS
ORGANIZATIONAL CHART**



**ARKANSAS STATE HIGHWAY AND TRANSPORTATION DEPARTMENT
ORGANIZATION CHART**



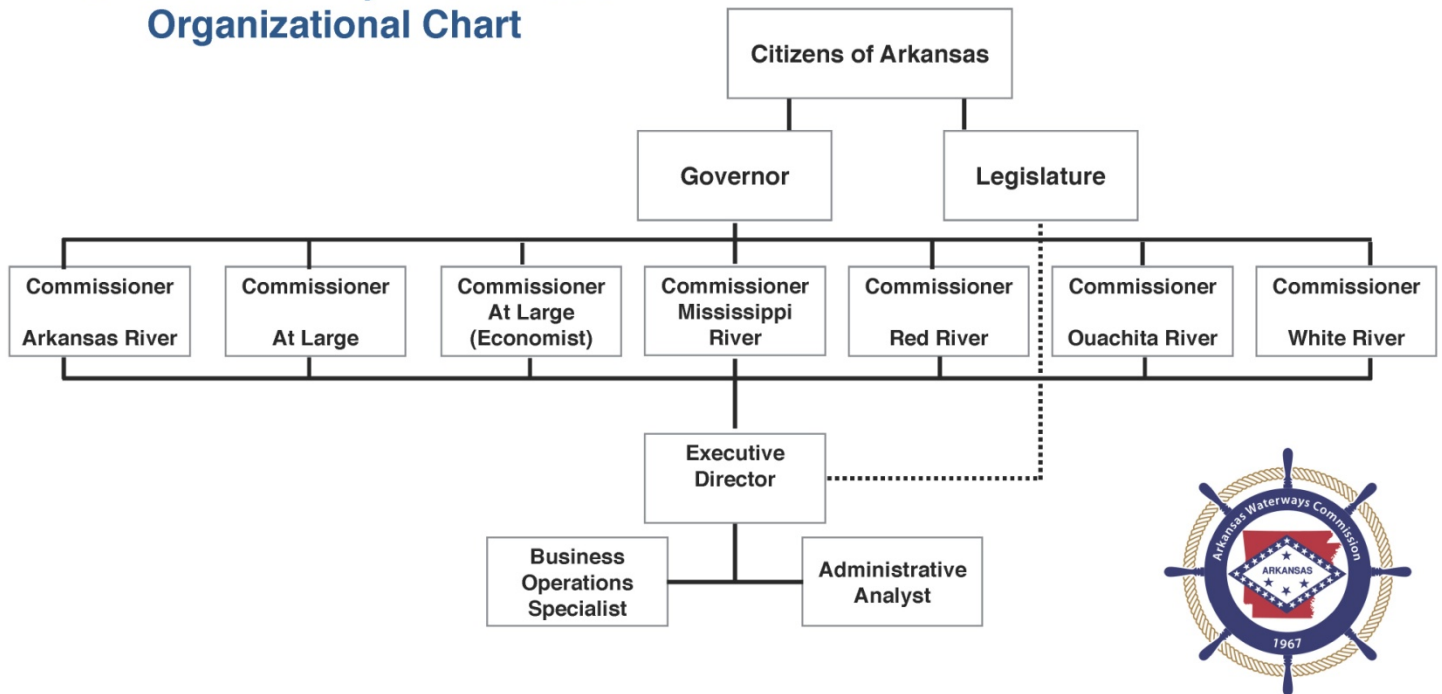
Scott D. Bennett

Director of Highways and Transportation

9-17-2016

Date

**Arkansas Waterways Commission
Organizational Chart**



ARRA Project Employment Information

Job Number	Job Name	Let Date	Number of Hours Worked	Amount Paid to Employees
012069	I-540 INTERCHANGES SHORT-TERM IMPVTS. (F)	08/19/2009	20,030	\$ 365,756.92
020424	SALINE RIVER-NO. MILLERVILLE (S)	10/14/2009	171,052	\$ 3,365,119.00
020425	NO. MILLERVILLE-SHERIDAN BYPASS (S)	08/19/2009	60,958	\$ 1,115,586.90
020426	FAIRVIEW-TOURIST INFORMATION CENTER (S)	01/20/2010	45,709	\$ 670,586.50
020448	HWY. 65 IMPROVEMENTS (GOULD) (S)	08/19/2009	110,240	\$ 1,671,547.02
020478	HWY. 65B TRAFFIC SIGNALS (PINE BLUFF) (S)	01/20/2010	4,162	\$ 72,617.53
020490	STAR CITY-NORTH & SOUTH (SEL. SECS.) (REHAB.) (S)	04/08/2009	4,100	\$ 61,708.55
020492	LITTLE LAKE BAYOU-HWY. 82 (REHAB.) (S)	05/20/2009	3,066	\$ 45,989.02
020493	HWY. 52/425-WEST (REHAB.) (S)	05/20/2009	6,684	\$ 93,946.76
020494	HWY. 79C-HWY. 165 (SEL. SECS.) (REHAB.) (S)	04/08/2009	2,159	\$ 34,895.67
020495	HWY. 65B/WALNUT ST. & CONVENTION CENTER DR. SIGNALS (PINE BLUFF)(S)	07/13/2010	2,177	\$ 29,358.68
020497	HWY. 190/OHIO ST./E. HARDING AVE. SIGNAL (PINE BLUFF) (S)	01/06/2011	3,041	\$ 42,576.11
030348	LEWISVILLE-HOPE (PASSING LANES) (S)	03/10/2010	64,685	\$ 953,543.72
030353	LA LINE-CO. RD. 2 (GR. & MDS) (F)	12/09/2009	131,778	\$ 2,036,316.50
030354	CO. RD. 2-DODDRIDGE (GR. & MDS) (F)	07/08/2009	103,430	\$ 1,645,130.95
030362	HWY. 278/HWY. 29/SHOVER RD. SIGNAL (HOPE) (S)	12/09/2009	1,335	\$ 22,053.71
030363	HWY. 371 SIGNALS REHAB. (NASHVILLE) (S)	12/09/2009	1,376	\$ 24,734.00
030367	KIRBY-EAST (REHAB.) (S)	04/08/2009	4,136	\$ 58,715.92
030368	PRESCOTT-SOUTH (REHAB.) (S)	05/20/2009	11,109	\$ 212,541.48
030369	HAZEL ST.-GREENWOOD ST. (HOPE) (REHAB.) (S)	05/20/2009	1,658	\$ 24,556.95
030370	ASHDOWN-WILTON (REHAB.) (S)	04/08/2009	2,798	\$ 39,604.02
030371	DEQUEEN-WEST (REHAB.) (S)	05/20/2009	1,710	\$ 23,366.08
030372	RED RIVER-EAST & WEST (REHAB.) (S)	04/08/2009	3,585	\$ 51,800.78
030373	HWY. 332-OZAN (REHAB.) (S)	05/20/2009	907	\$ 13,321.04
040457	TAYLOR AVE.-HWY. 22 (STRS.) (F)	05/20/2009	91,495	\$ 1,792,493.46
040458	CO. RD. 8-CUSTER BLVD. (GR. & STRS.) (F)	08/19/2009	169,373	\$ 2,783,545.06
040487	HWY. 255-HWY. 96 (S)	04/13/2010	81,929	\$ 1,523,082.55
040488	CO. RD. 16-HWY. 246 (PASSING LANE) (S)	01/20/2010	23,684	\$ 384,541.71
040498	HWY. 16/HWY. 74 SIGNAL (ELKINS) (S)	10/14/2009	384	\$ 5,884.47
040528	HWY. 271/HARVARD AVE. SIGNAL & INTERS. IMPVTS. (FORT SMITH)(S)	01/20/2010	1,054	\$ 15,989.48
040537	HWY. 112-I-540 (REHAB.) (S)	04/08/2009	1,354	\$ 21,631.94
040538	CHARLESTON-EAST (REHAB.) (S)	05/20/2009	1,903	\$ 27,952.05
040539	CANE CREEK-PEDEE CREEK (REHAB.) (S)	04/08/2009	2,183	\$ 37,647.55
040540	HWY. 28-NORTH (REHAB.) (S)	05/20/2009	2,333	\$ 31,930.79
040541	I-540-EAST (FT. SMITH) (REHAB.) (S)	05/20/2009	3,313	\$ 45,437.78
040542	HWY. 8-SOUTH & NORTH (REHAB.) (S)	04/08/2009	3,240	\$ 55,804.83
040543	ALMA-EAST (REHAB.) (S)	04/08/2009	803	\$ 11,308.25
040568	HWY. 156-I-540 (FAYETTEVILLE) (REHAB.) (S)	06/02/2010	4,070	\$ 75,449.83
050188	PANGBURN-SEARCY (PASSING LANES) (S)	03/10/2010	20,178	\$ 324,032.64
050191	HWY. 167 SIGNALS REHAB. (BATESVILLE) (S)	04/13/2010	4,177	\$ 92,605.99
050197	HWY. 16/HOLMES RD. SIGNAL (SEARCY) (S)	01/20/2010	769	\$ 17,240.15
050200	OVERFLOW CREEK-NORTH (REHAB.) (S)	05/20/2009	1,302	\$ 21,945.91
050201	ROCKY BAYOU CREEK-EAST (REHAB.) (S)	04/08/2009	1,022	\$ 21,036.27
050202	JACKSON CO. LINE-NORTH (REHAB.) (S)	05/20/2009	2,796	\$ 46,850.05
050203	PLEASANT PLAINS-SOUTH (REHAB.) (S)	04/08/2009	1,954	\$ 36,195.13
050204	GREERS FERRY DAM-SOUTH (REHAB.) (S)	04/08/2009	1,672	\$ 28,534.76
050205	BLACK RIVER-WEST (REHAB.) (S)	05/20/2009	815	\$ 15,503.15

ARRA Project Employment Information

Job Number	Job Name	Let Date	Number of Hours Worked	Amount Paid to Employees
050206	HWY. 25/HWY. 124 SIGNAL (QUITMAN) (S)	03/10/2010	3,347	\$ 50,831.95
050208	HWY. 67B/HWY. 31/HWY. 367 SIGNAL (BEEBE) (S)	01/20/2010	635	\$ 10,211.09
050211	HWY. 25/HWY. 110 SIGNAL (HEBER SPRINGS) (S)	07/13/2010	893	\$ 21,726.64
050220	HWY. 157-SOUTH (REHAB.) (S)	01/20/2010	1,814	\$ 36,514.88
050242	HWY. 67 RAMP (EXITS 28, 31, 35 & 42) (REHAB.) (S)	08/17/2010	6,061	\$ 103,945.61
050243	LONOKE CO. LINE-NORTH (REHAB.) (S)	08/17/2010	13,820	\$ 306,523.44
061137	SHADY GROVE RD.-NORTH OF HWY. 270 (HOT SPRINGS) (S)	08/19/2009	22,536	\$ 350,015.30
061171	JACKSONVILLE CATO RD.-BAYOU METO (S)	10/14/2009	38,340	\$ 563,060.75
061177	KIEHL AVE.-HWY. 440 (F)	01/20/2010	78,831	\$ 1,498,625.81
061216	MALVERN DOWNTOWN SIGNALS REHAB. (S)	03/10/2010	4,067	\$ 65,447.30
061239	I-430A-630 INTERCHANGE MODIFICATIONS (PHASE 2) (F)	05/20/2009	140,061	\$ 3,299,377.78
061240	HWY. 100/VESTAL BLVD. SIGNAL (NLR) (S)	01/20/2010	633	\$ 9,676.72
061245	I-30-HWY. 67 PATCHING (REHAB.) (F)	07/08/2009	16,253	\$ 288,993.26
061246	PULASKI CO. LINE-EAST (REHAB.) (S)	04/08/2009	1,967	\$ 32,841.02
061247	GLEN ROSE-SOUTH (REHAB.) (S)	04/08/2009	1,079	\$ 18,935.54
061248	HWY. 63-HWY. 33 (REHAB.) (S)	04/08/2009	2,131	\$ 39,780.99
061249	HWY. 386-HWY. 391 (REHAB.) (S)	05/20/2009	5,567	\$ 82,842.35
070288	FORDYCE-HWY. 273 (S)	12/09/2009	210,099	\$ 3,955,246.95
070297	CHAMPAGNOLLE RD.-HWY. 7S (BS. & SURF.) (S)	10/14/2009	96,889	\$ 1,623,249.31
070311	HWY. 67 TRAFFIC SIGNALS (ARCADEPHIA) (S)	10/14/2009	1,432	\$ 25,802.00
070324	I-30/HWY. 7 SIGNALS (CADD0 VALLEY) (S)	01/20/2010	839	\$ 12,258.25
070329	OUACHITA RIVER-NORTH (SEL. SECS.) (REHAB.) (S)	05/20/2009	5,996	\$ 95,461.86
070330	CALHOUN CO. LINE-NORTH (REHAB.) (S)	04/08/2009	3,066	\$ 55,322.92
070331	KINGSLAND-RISON (REHAB.) (S)	05/20/2009	7,844	\$ 130,194.88
070332	HAMPTON-SOUTH (SEL. SECS.) (REHAB.) (S)	04/08/2009	1,595	\$ 26,426.39
070333	HWY. 278/COUNTRY CLUB RD. SIGNAL (CAMDEN) (S)	06/02/2010	1,389	\$ 23,046.55
070338	HWY. 51/12TH STREET SIGNAL (ARCADEPHIA) (S)	02/23/2011	2,217	\$ 36,691.00
080142	SALEM RD. RR OVERPASS (CONWAY) (F)	08/19/2009	25,353	\$ 435,008.40
080236	HWY. 7-EAST (RUSSELLVILLE BYPASS) (S)	06/02/2010	96,098	\$ 1,586,047.31
080307	VILONIA BYPASS (BS. & SURF.) (S)	03/10/2010	126,927	\$ 2,452,896.71
080319	HWY. 64/ROOSTER RD./LOWER RIDGE RD. SIGNAL (FAULKNER CO.)(S)	07/08/2009	1,984	\$ 26,597.56
080353	ARCHEY FORK BRIDGE-NORTH (REHAB.) (S)	05/20/2009	5,183	\$ 81,824.77
080354	HWY. 25 S.-NORTH & SOUTH (REHAB.) (S)	04/08/2009	2,242	\$ 38,753.38
080355	MICKLES-EAST & WEST (REHAB.) (S)	04/08/2009	4,334	\$ 46,128.56
080356	J STREET-HWY. 326 (RUSSELLVILLE) (REHAB.) (S)	05/20/2009	2,206	\$ 37,914.53
080357	I-40 OFF RAMP-ON RAMP (CONWAY) (REHAB.) (S)	04/08/2009	720	\$ 12,175.38
080358	HWY. 65/HWY. 16 EAST SIGNAL (CLINTON) (S)	03/10/2010	580	\$ 7,979.07
080359	HWY. 60/COUNTRY CLUB RD. SIGNAL (CONWAY) (S)	04/13/2010	1,313	\$ 23,444.48
080371	I-40-SQUIRREL HILL (REHAB.) (S)	01/20/2010	3,156	\$ 52,828.23
080399	HWY. 25-NORTH & SOUTH (REHAB.) (S)	08/17/2010	2,717	\$ 44,537.50
080400	HWY. 270-SOUTH (REHAB.) (S)	08/17/2010	5,047	\$ 67,352.51
080401	HWY. 124-NORTH & SOUTH (DAMASCUS) (REHAB.) (S)	08/17/2010	910	\$ 14,127.71
090207	HWY. 112/HWY. 264 E. SIG. & INTERS. IMPVTS.(CAVE SPRINGS)(S)	01/20/2010	13,197	\$ 190,899.96
090241	OKLAHOMA STATE LINE-WASHINGTON ST. (F)	12/09/2009	76,711	\$ 1,307,807.32
090261	HWY. 279/HWY. 340/HIGHLANDS BLVD. SIGNAL (BELLA VISTA) (S)	01/20/2010	797	\$ 11,613.24
090266	SILOAM SPRINGS-EAST (REHAB.) (F)	05/20/2009	3,852	\$ 59,131.82
090267	MISSOURI STATE LINE-SOUTH (REHAB.) (F)	04/08/2009	4,013	\$ 98,038.00

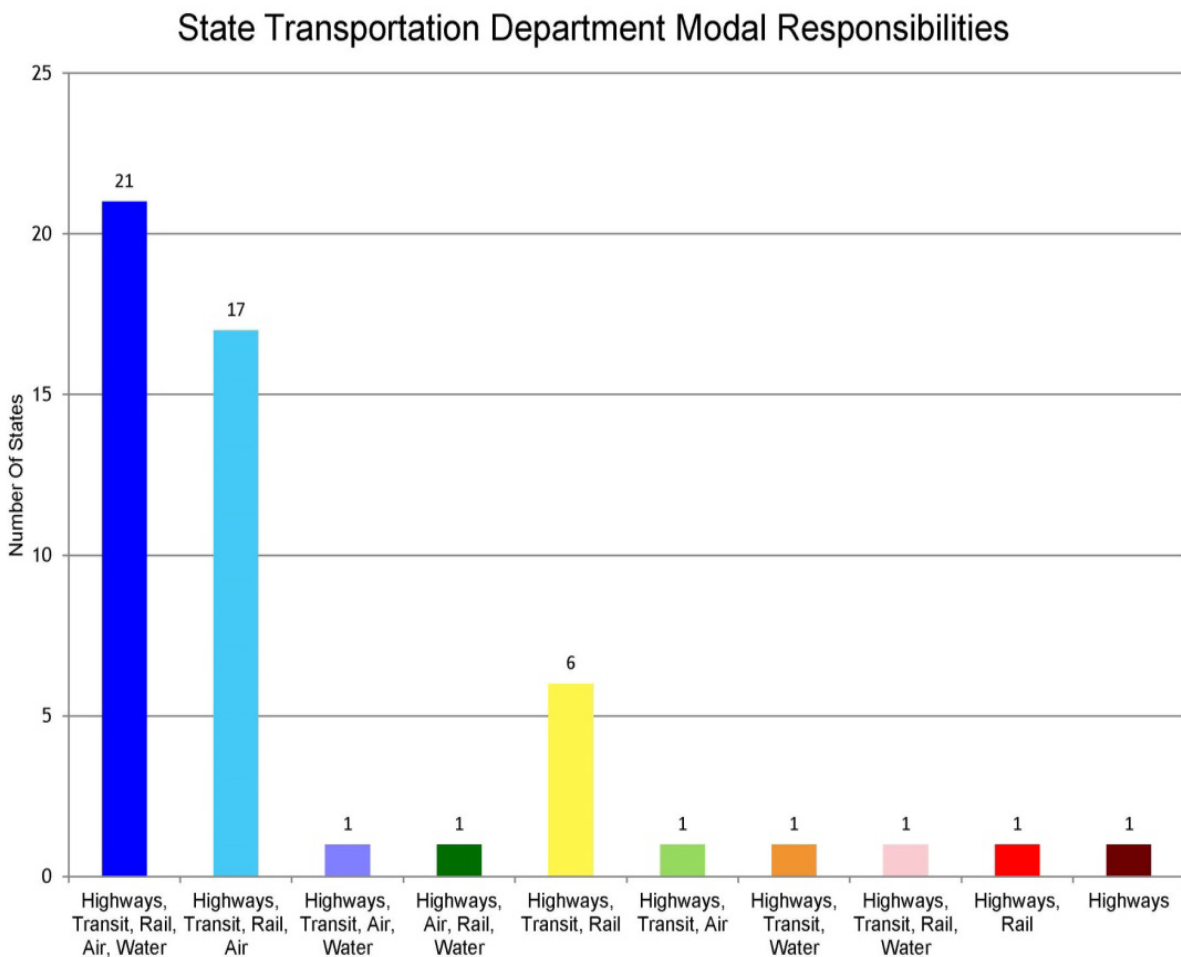
ARRA Project Employment Information

Job Number	Job Name	Let Date	Number of Hours Worked	Amount Paid to Employees
090279	GASSVILLE-WEST (REHAB.) (S)	06/02/2010	4,666	\$ 65,269.50
090292	HWY. 72 SOUTH-HWY. 72 NORTH (BELLA VISTA BYPASS) (F)	02/23/2011	126,434	\$ 2,517,694.42
100403	HWY. 230-HWY. 63 (GR. & STRS.) (F)	05/20/2009	153,690	\$ 3,396,407.61
100642	HWY. 67-CASH BYPASS (F)	03/10/2010	85,070	\$ 1,936,421.50
100664	HWY. 141/PARKER RD. SIGNAL (JONESBORO) (S)	05/20/2009	624	\$ 10,617.99
100690	REYNOLDS RD.-HWY. 49B (PARAGOULD) (REHAB.) (S)	05/20/2009	1,694	\$ 27,847.66
100691	I-55-WEST (BLYTHEVILLE) (REHAB.) (S)	04/08/2009	1,079	\$ 32,593.59
100692	HWY. 328-MISSOURI STATE LINE (REHAB.) (S)	05/20/2009	2,144	\$ 33,492.39
100693	HWY. 119Y-WEST & EAST (OSCEOLA) (REHAB.) (S)	04/08/2009	2,792	\$ 46,674.29
100694	HWY. 67B N.-HWY. 67B S. (WALNUT RIDGE) (REHAB.) (S)	05/20/2009	522	\$ 10,623.44
100695	HWY. 90-NORTH (POCAHONTAS) (REHAB.) (S)	04/08/2009	2,491	\$ 52,408.37
100696	CRAIGHEAD CO. LINE-HWY. 69 (REHAB.) (S)	05/20/2009	2,729	\$ 63,240.85
100697	HWY. 91-HWY. 226 (JONESBORO) (REHAB.) (S)	04/08/2009	8,380	\$ 170,198.87
100704	HWY. 91/GEE ST. SIGNAL (JONESBORO) (S)	06/02/2010	568	\$ 10,905.00
100716	SO. OF HWY. 61-NO. OF HWY. 18 (F)	09/29/2010	70,651	\$ 1,210,308.11
110488	ARKANSAS WELCOME CENTER (WEST MEMPHIS) (F)	03/10/2010	49,984	\$ 791,322.56
110505	HWY. 70-I-40 (WEST MEMPHIS) (S)	01/20/2010	30,441	\$ 543,205.38
110512	HWY. 1/HWY. 306 SIGNAL (COLT) (S)	10/14/2009	1,259	\$ 22,089.62
110517	I-40 RAMP RELOCATIONS (WEST MEMPHIS) (F)	04/13/2010	41,347	\$ 834,795.13
110518	CALDWELL-COLT (REHAB.) (S)	05/20/2009	3,606	\$ 55,552.55
110519	HWY. 49-HWY. 242 (HELENA-W. HELENA) (REHAB.) (S)	05/20/2009	1,169	\$ 16,016.67
110520	HWY. 241-NORTH (REHAB.) (S)	04/08/2009	632	\$ 16,320.00
110521	HWY. 50-HWY. 70 (REHAB.) (S)	04/08/2009	4,141	\$ 53,755.48
BR6107	FOURCHE RIVER STR. & APPRS. (S)	05/20/2009	16,144	\$ 376,412.37
FA0108	CO. RD. 33-EAST (SURFACING) (S)	05/20/2009	1,007	\$ 14,047.78
FA0404	OSAGE CREEK STR. & APPRS. (S)	10/14/2009	16,312	\$ 313,504.44
FA0620	CO. RD. 69-CO. RD. 4 PHASE 2 (RECONST.) (S)	07/08/2009	5,945	\$ 81,146.75
FA1209	WILBURN-NORTH (REHAB.) (S)	01/20/2010	897	\$ 15,532.04
FA2908	HWY. 278-HWY. 174 (REHAB.) (S)	01/20/2010	730	\$ 10,002.51
FA6013	LEOPARD CREEK STRS. & APPRS. (S)	08/19/2009	14,929	\$ 266,179.50
FA6705	PINE CREEK STRS. & APPRS. (S)	05/20/2009	12,437	\$ 179,440.35
FA7516	KINGSTON-HWY. 28 (PHASE 2) (S)	03/10/2010	18,567	\$ 237,631.55
Totals			2,913,510	\$ 52,861,832.86

**State Transportation Department
Modal Responsibility**

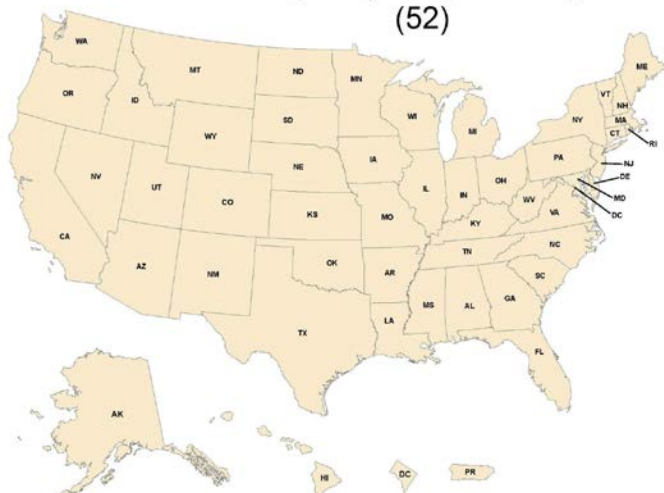
Highways 52
Transit 49
Rail 48
Air 42
Water 25

State	Highway	Transit	Rail	Air	Water
Alabama	X	X	X	X	
Alaska	X	X	X	X	X
Arizona	X	X	X	X	
Arkansas	X	X	X		
California	X	X	X	X	
Colorado	X	X	X	X	
Connecticut	X	X	X	X	X
Delaware	X	X	X	X	X
District of Columbia	X	X	X		
Florida	X	X	X	X	X
Georgia	X	X	X	X	X
Hawaii	X	X		X	X
Idaho	X	X	X	X	
Illinois	X	X	X	X	X
Indiana	X	X	X	X	X
Iowa	X	X	X	X	X
Kansas	X	X	X	X	
Kentucky	X	X	X	X	X
Louisiana	X	X	X	X	X
Maine	X	X	X	X	X
Maryland	X	X	X	X	X
Massachusetts	X	X	X	X	
Michigan	X	X	X	X	X
Minnesota	X	X	X	X	X
Mississippi	X	X	X	X	X
Missouri	X	X	X	X	X
Montana	X	X	X	X	
Nebraska	X	X	X		
Nevada	X	X	X	X	
New Hampshire	X	X	X	X	
New Jersey	X		X	X	X
New Mexico	X	X	X	X	
New York	X	X	X	X	X
North Carolina	X	X	X	X	X
North Dakota	X	X	X		
Ohio	X	X	X	X	
Oklahoma	X	X	X		X
Oregon	X	X	X		
Pennsylvania	X	X	X	X	
Puerto Rico	X	X			X
Rhode Island	X		X		
South Carolina	X	X	X		
South Dakota	X	X	X	X	
Tennessee	X	X	X	X	X
Texas	X	X	X	X	X
Utah	X	X		X	
Vermont	X	X	X	X	
Virginia	X				
Washington	X	X	X	X	
West Virginia	X	X	X	X	X
Wisconsin	X	X	X	X	X
Wyoming	X	X	X	X	

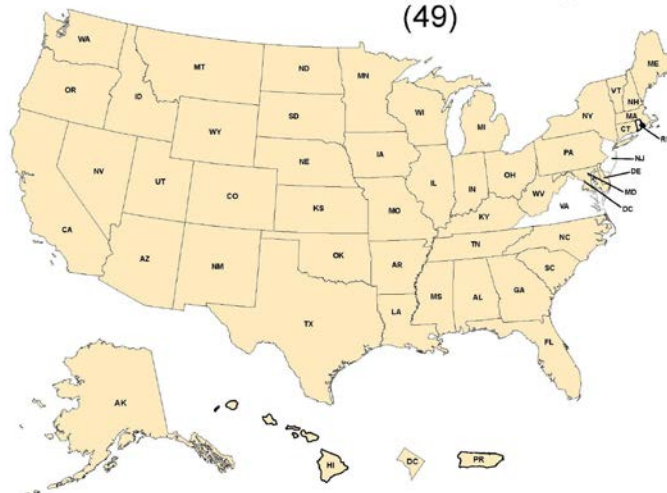


State Transportation Department

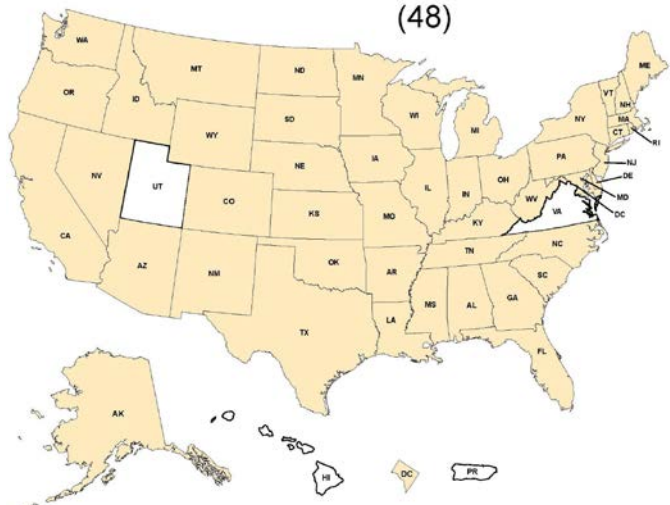
**Highway Responsibility
(52)**



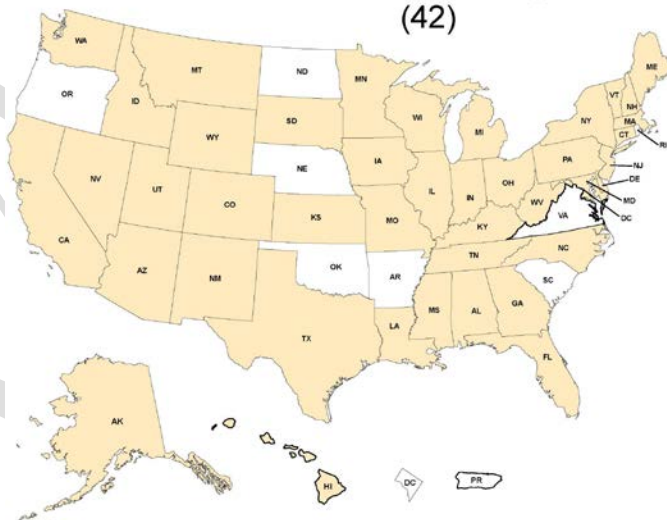
**Transit Responsibility
(49)**



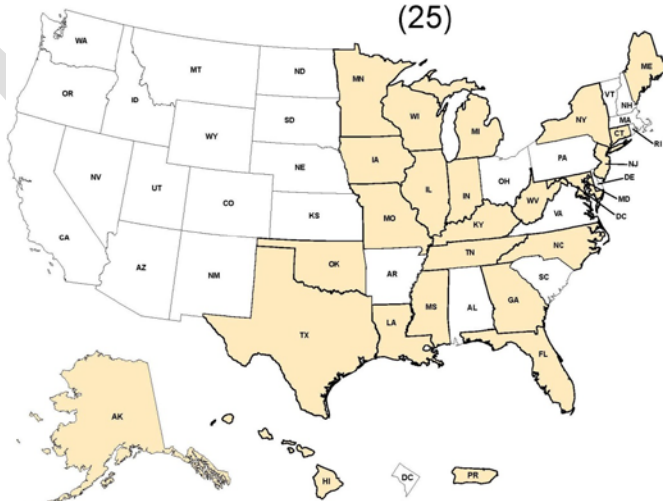
**Rail Responsibility
(48)**



**Air Responsibility
(42)**



**Water Responsibility
(25)**



State Transportation Department Modal Responsibilities

