

# ***WIND CATCHER***

---

## **ENERGY CONNECTION**



# **SWEPCO**

**Founded in 1912**

**Headquartered in Shreveport, LA serving customers  
in parts of Arkansas, Louisiana and Texas**

**Approximately 532,000 customer accounts**

**More than 1,700 employees**







“

WE ARE WORKING TO MEET THE  
**FUTURE ENERGY NEEDS**

OF OUR CUSTOMERS IN THE CLEANEST, MOST  
EFFICIENT AND COST-EFFECTIVE WAYS POSSIBLE.

”

**Venita McCellon-Allen**  
SWEPCO President & COO





# 2000 MEGAWATT WIND FARM

AND **GENERATION TIE LINE** TO DELIVER  
**6 MILLION** MEGAWATT-HOURS OF NEW WIND ENERGY



A photograph of a wind farm at sunset. Several large white wind turbines are visible in a field of low-lying vegetation. The sky is a gradient of blue and orange, with the sun low on the horizon. The turbines are silhouetted against the bright sky.

# THE PROTECTING AMERICANS FROM TAX HIKES ACT OF 2015

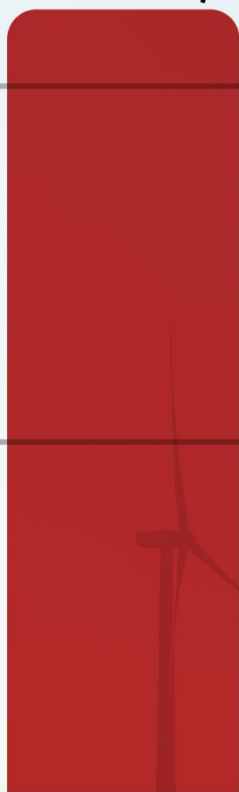
**Extends Federal Production Tax Credits**

**Creates opportunities to decrease average wind  
production costs**

**Includes a step-down in the amount of credits available  
depending on time of construction and in-service date**

## FEDERAL WIND TAX CREDIT REDUCTION

**2.3¢**



**1.8¢**



**1.5¢**



**1.2¢**



**0.0¢**



2016

2017

2018

2019

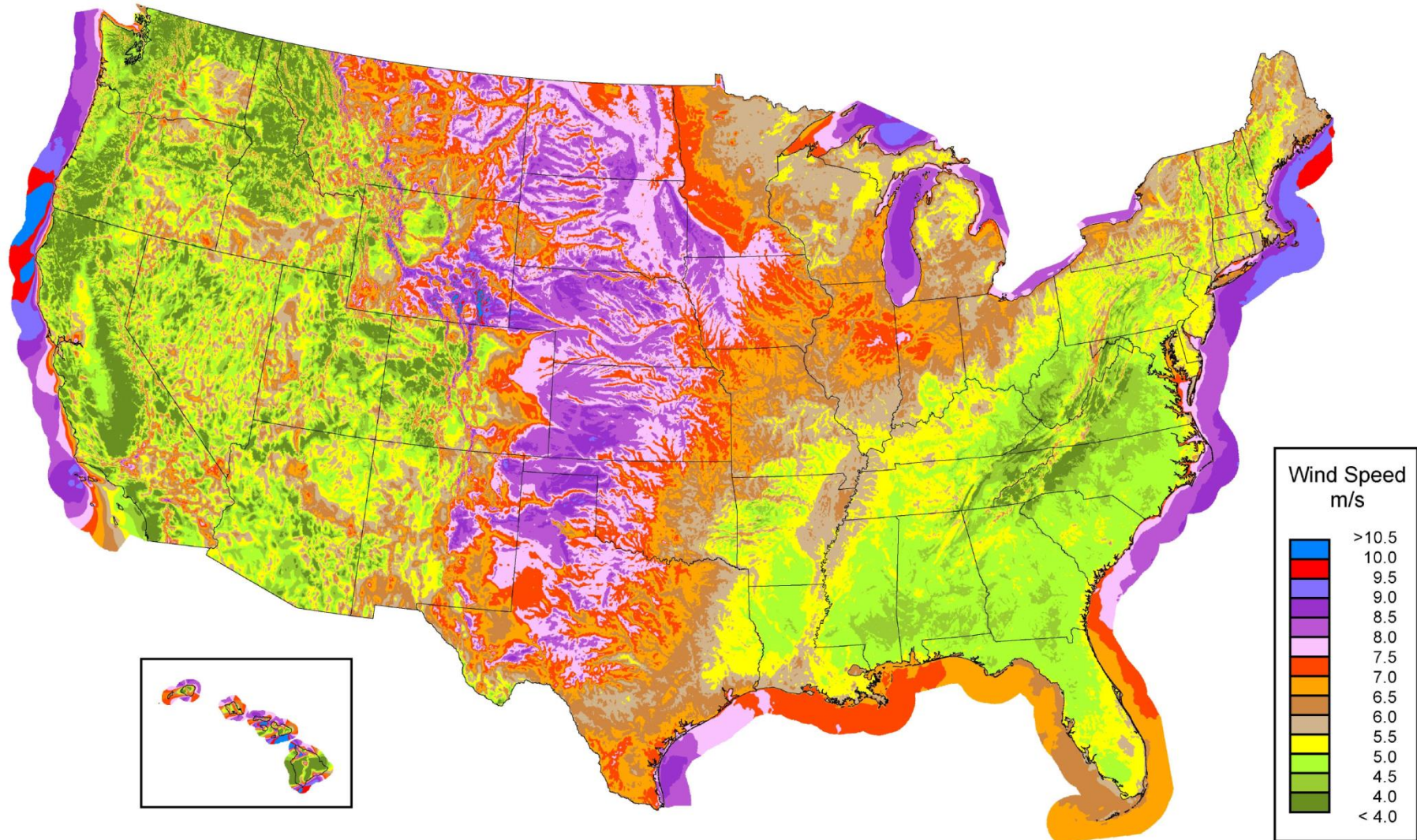
2020

Wind tax credit (per kilowatt-hour)

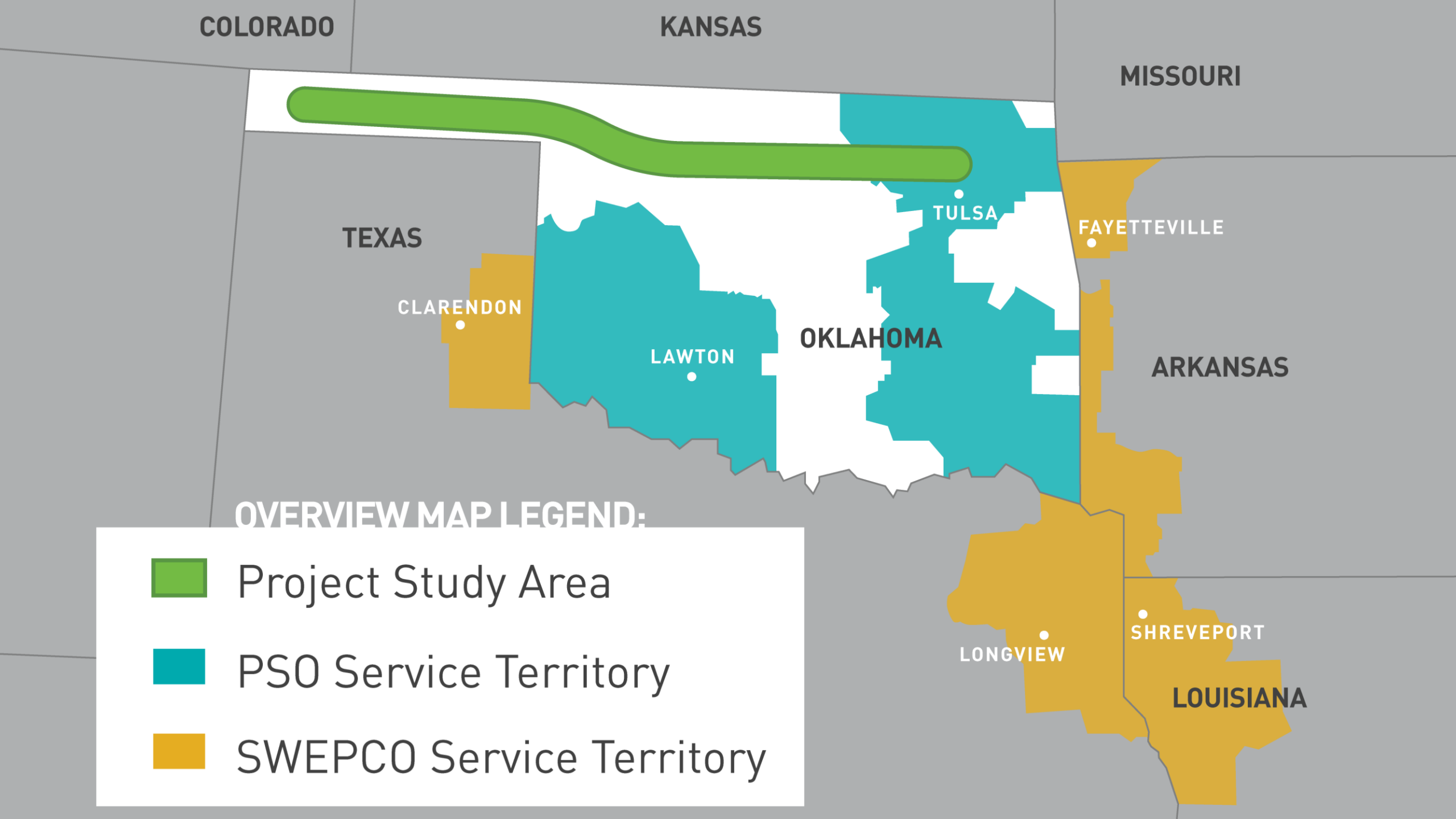


# ANNUAL AVERAGE WIND SPEEDS

LAND-BASED AND OFFSHORE AT 80M



SOURCE: Department of Energy





# WIND CATCHER FACILITY

Largest wind farm in America and second largest in the world, once operational

300,000 acres in the Oklahoma Panhandle

800 GE wind turbines; 2.5 MW each

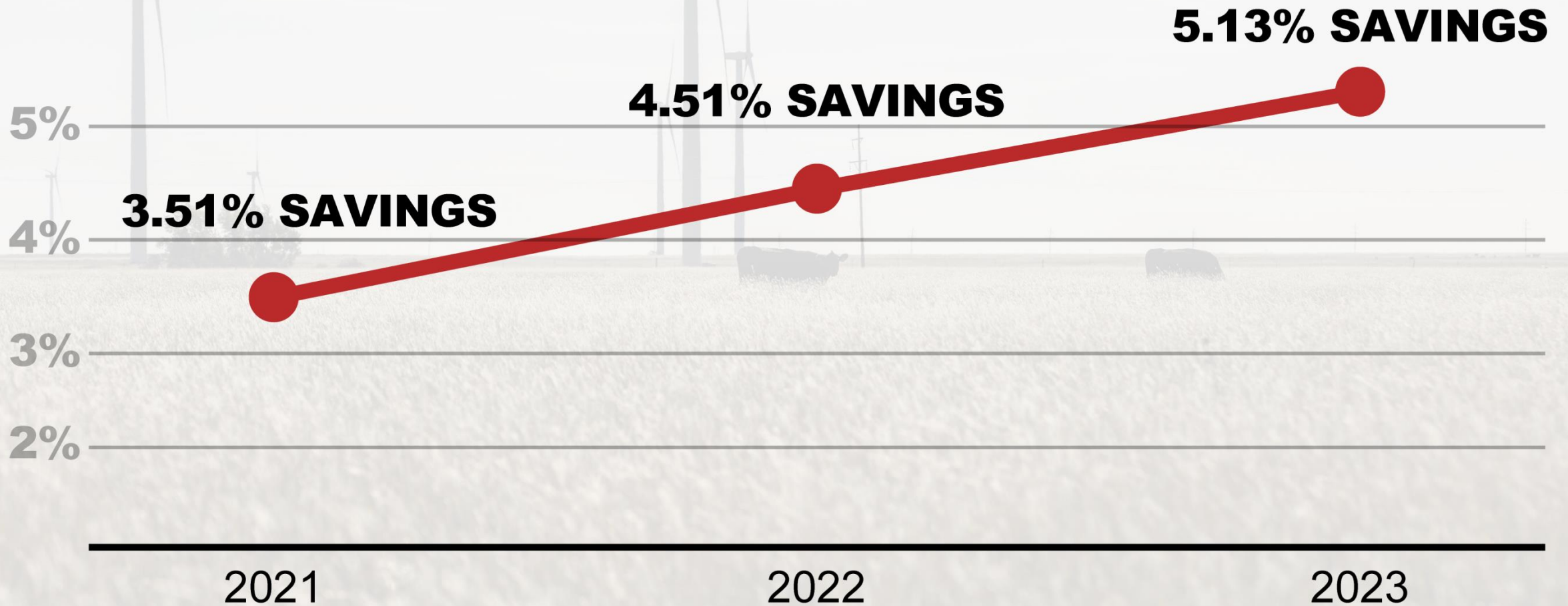


Image Credit: GE Renewable Energy



# **SWEPCO ARKANSAS RESIDENTIAL CUSTOMER**

USING 1,000 KILOWATT-HOURS (KWH)





MORE THAN  
**\$5 BILLION** IN SAVINGS  
FOR SWEP  
CO CUSTOMERS





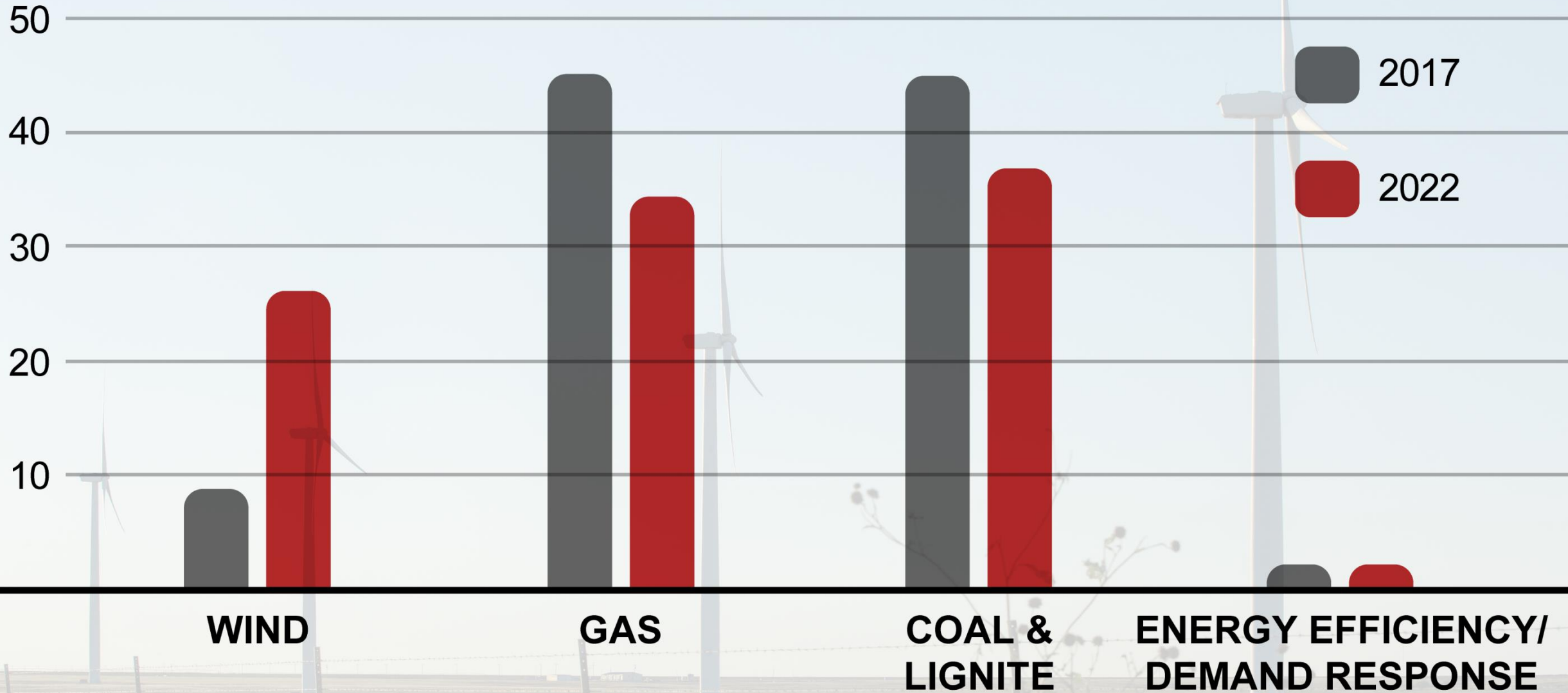


**30%** OF WIND TURBINE  
BLADES, TOWERS AND  
GENERATOR FRAMES

WILL BE MANUFACTURED IN  
**ARKANSAS, LOUISIANA  
OKLAHOMA OR TEXAS**



## SWEPCO RESOURCE MIX



# GEN-TIE LINE PROJECT TIMELINE

**2017**

**SUMMER 2017**

LINE ROUTE  
DEVELOPMENT  
PROCESS

FILE REGULATORY  
APPLICATIONS

**FALL 2017**

OPEN HOUSE FOR  
PUBLIC INPUT

**LATE 2017**

FINAL ROUTE  
DETERMINATION

**2018**

**EARLY 2018**

RIGHT-OF-WAY  
COMMUNICATIONS  
BEGIN

PRELIMINARY  
ENGINEERING  
ACTIVITIES

**SPRING 2018**

ROW ACQUISITION  
BEGINS

**LATE 2018**

ROW CLEARING &  
PRE-CONSTRUCTION

**2019**

**EARLY 2019**

CONSTRUCTION  
BEGINS

**2020**

**LATE 2020**

PROJECT  
IN-SERVICE

**2021**

**FALL 2021**

ROW  
RESTORATION  
COMPLETE



# **SUBJECT TO REGULATORY APPROVALS**

ARKANSAS

LOUISIANA

OKLAHOMA

TEXAS

FEDERAL ENERGY REGULATORY COMMISSION

**APPLICATIONS** FILED BY JULY 31, 2017

**HEARINGS** SCHEDULED IN Q1 2018

# LEARN MORE ABOUT THE PROJECT

**SWEPCO.COM/WINDCATCHER  
WINDCATCHERENERGY.COM**

**WIND CATCHER  
ENERGY CONNECTION**

