

# Plains & Eastern Clean Line

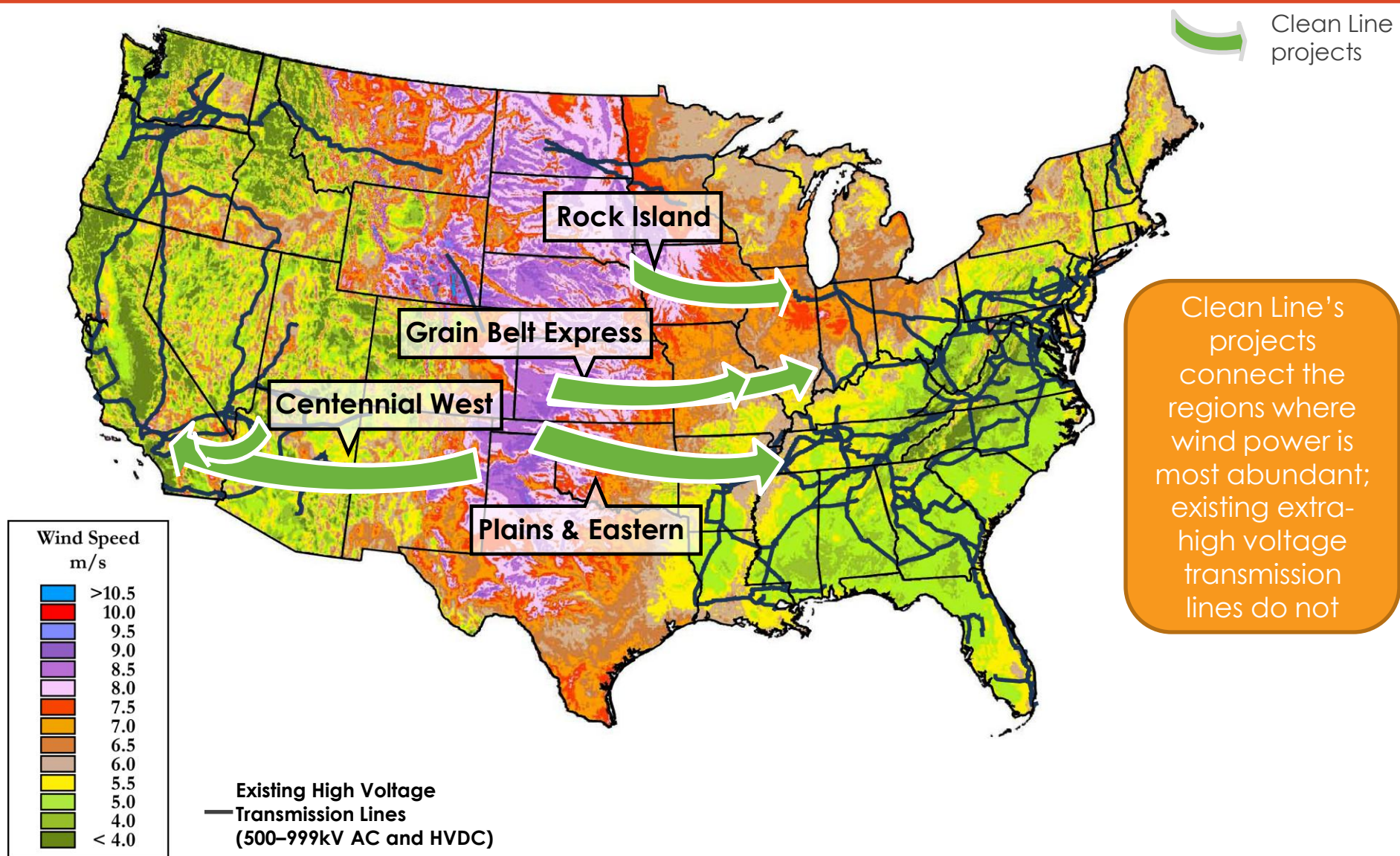
## Presentation to the Joint Committee on Energy Arkansas Legislature

April 2012

**CLEAN LINE**  
ENERGY PARTNERS

The logo graphic consists of two thin, curved green lines that sweep upwards from the bottom left towards the right, positioned below the text.

# Clean Line's projects connect the best wind resources to load centers

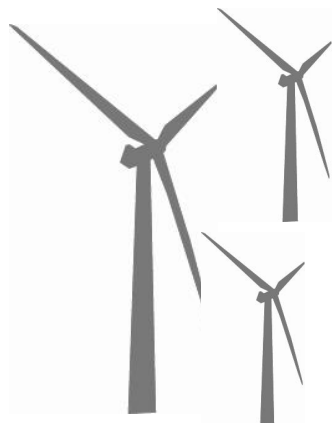


# Clean Line Energy Partners

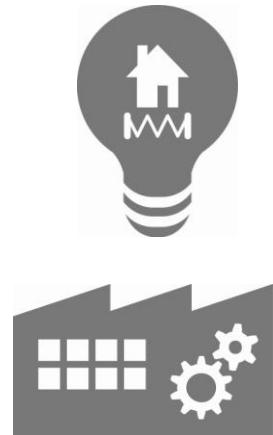
Entrepreneurial team, focus, and capital to connect renewable energy with demand

- Clean Line Energy focuses on building transmission lines to connect renewable resources to load centers
- Clean Line seeks to develop, own and operate long haul, high voltage direct current (HVDC) transmission lines across the United States, helping solve one of the most vexing challenges to a cleaner energy future
- Clean Line's principals, partners and investors bring unique perspective, experience and focus to transmission development along with a track record of success in energy project development

Strong wind resources



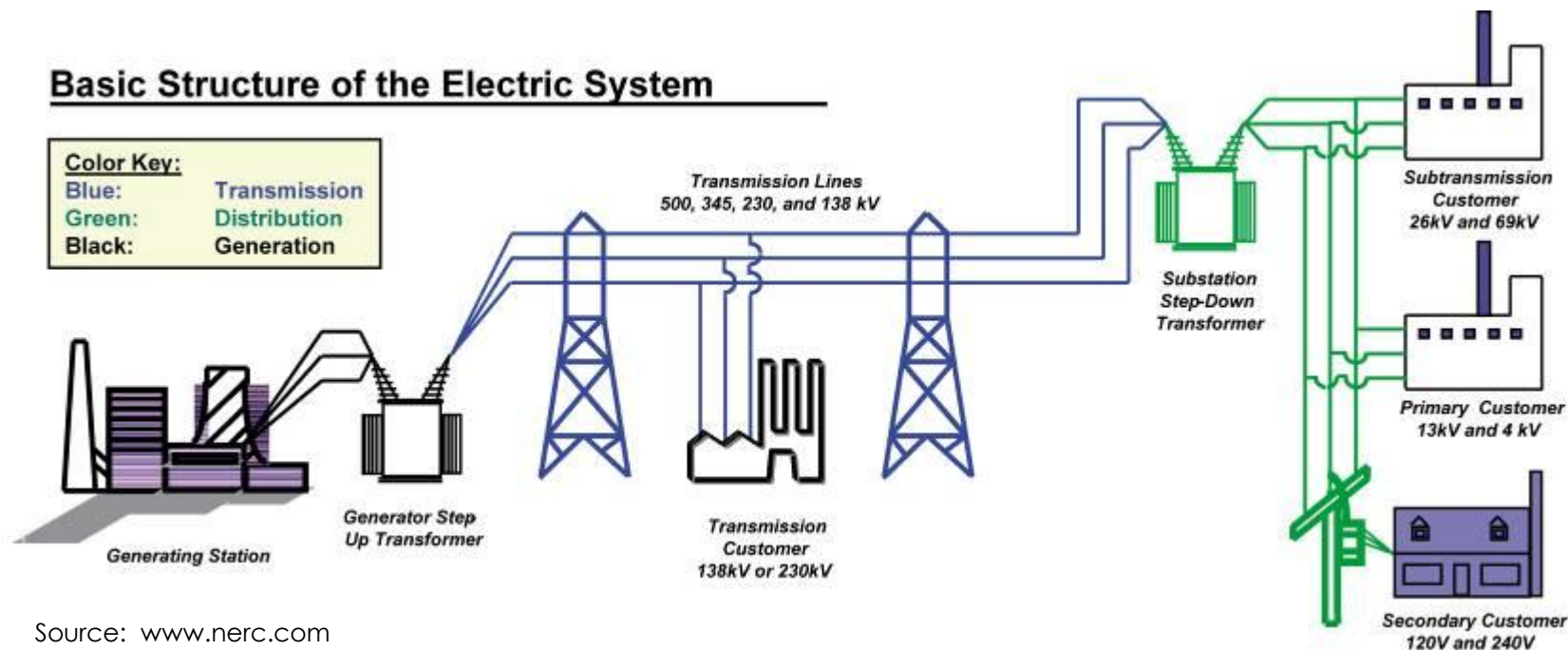
Large demand centers



***HV→DC***

**Integrating large clean energy sources with demand centers**

# Transmission critical link connecting sources like wind with distribution and customers



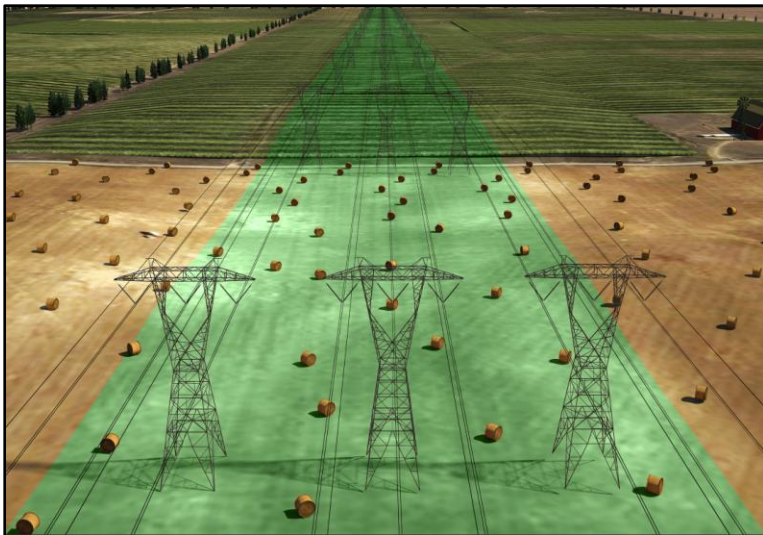
Generation Source	Part of total energy (2009)
Coal	45 %
Natural Gas	23 %
Nuclear	20 %
Wind and other renewables	4 %
Hydroelectric	7 %
Petroleum, other gases, other	2 %

Source: US Energy Information Administration

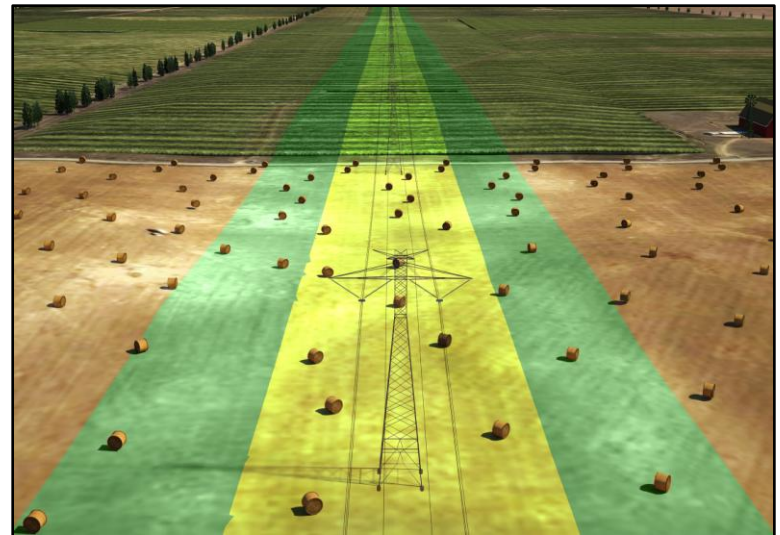


# HVDC is the most efficient method to transmit large amounts of electricity over long distances

- More efficient — Lower line losses
- Lower cost — Requires less infrastructure, results in lower costs and lower prices for delivered renewable energy
- Improved reliability — Control of power flow enhances system stability and lowers cost of integrating wind
- Smaller footprint — Use narrower right-of-way than equivalent Alternating Current (AC)



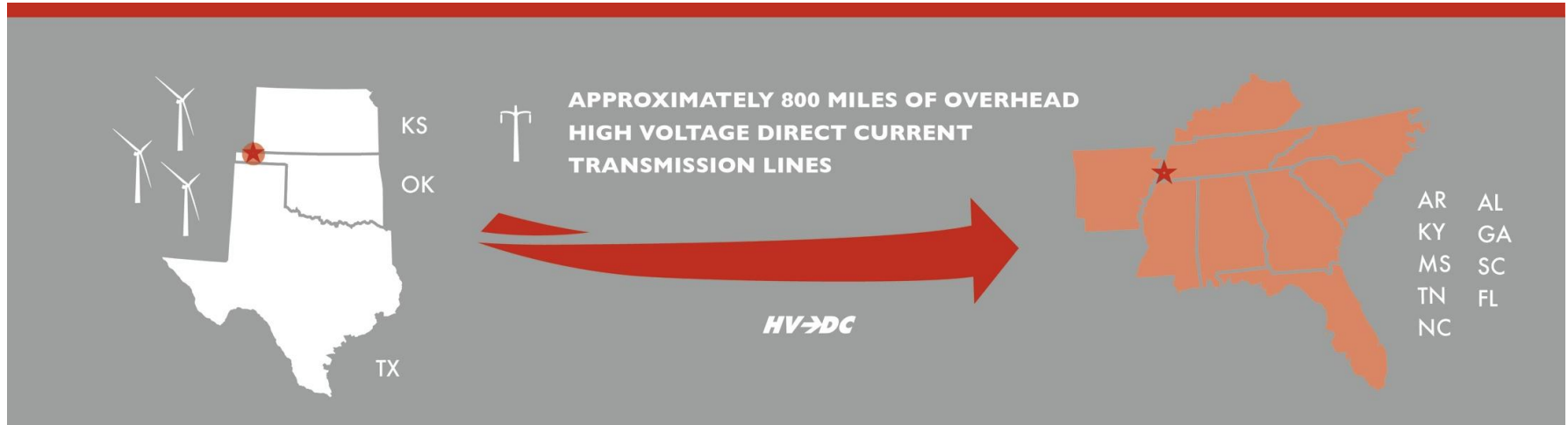
AC Footprint



DC Footprint

# Plains & Eastern Clean Line represents significant investment and large benefits

## PLAINS & EASTERN CLEAN LINE



10,000 +  
direct jobs during  
construction



PROPERTY TAX REVENUE

Transmission pays  
property taxes to  
counties

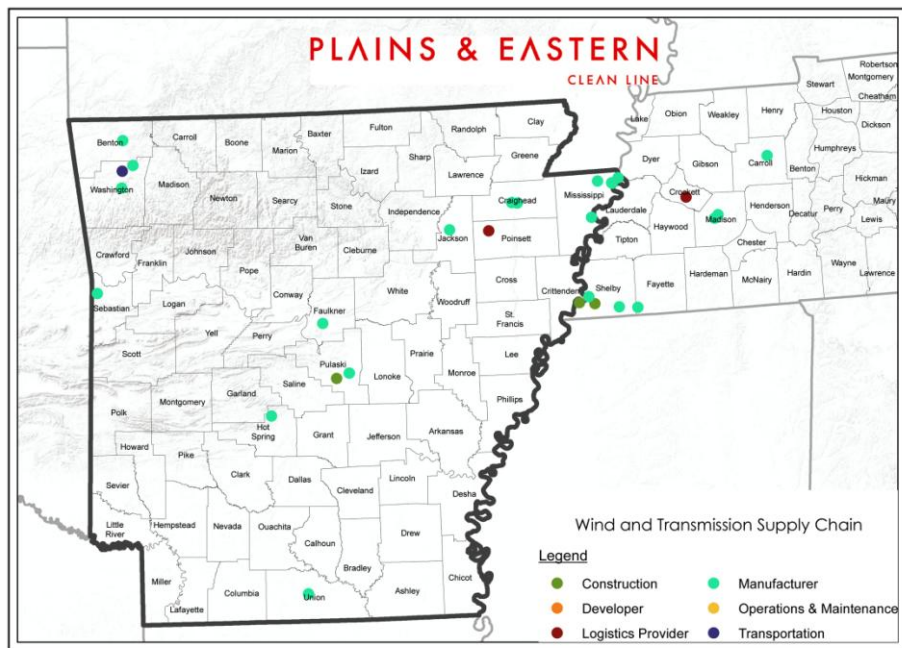


1000 +  
direct jobs during  
operation



Support clean  
energy  
manufacturing

# Plains & Eastern Clean Line results in large economic benefits to Arkansas



LM Wind Power blade in Arkansas



MORE THAN 15 WIND ENERGY  
SUPPLY CHAIN COMPANIES  
LOCATED IN ARKANSAS



HUNDREDS OF  
CONSTRUCTION JOBS

CLEAN LINE ENERGY PARTNERS



INCREASED MARKET COMPETITION  
BENEFITS ELECTRICITY CONSUMERS



PROPERTY TAX REVENUE

MILLIONS OF ANNUAL PROPERTY TAXES  
SUPPORT LOCAL COMMUNITIES



HOSPITAL



SCHOOL

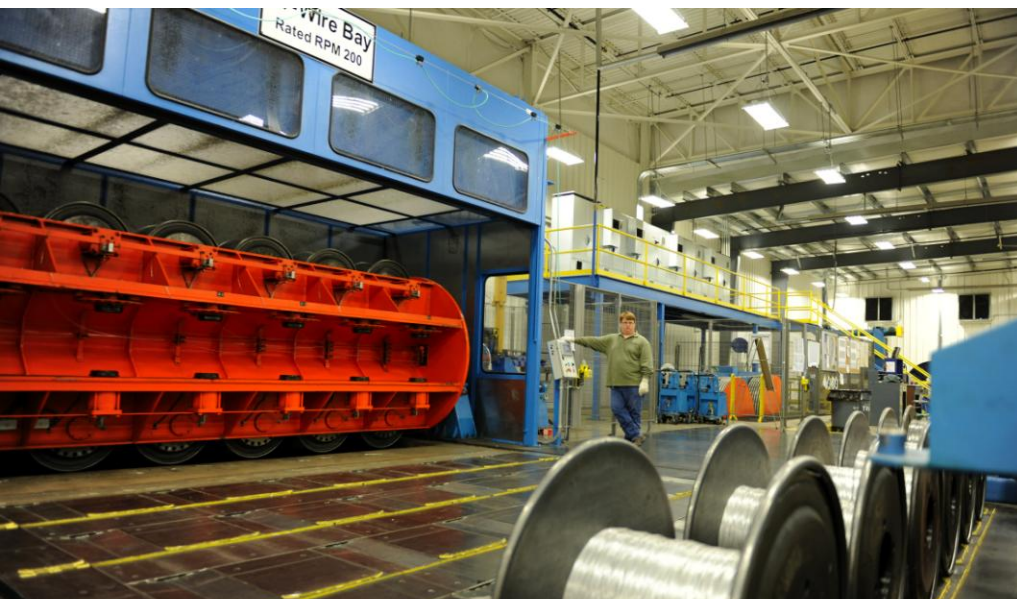


FIRE TRUCK

# Strategic alliances enhance the supply chain for local benefits

The Plains & Eastern Clean Line will use approximately:

- 3470 transmission structures
- 25 million feet of conductor
- 121,450,000 pounds of steel for the structures
- 138,000 cubic yards of concrete for foundations
- 11.7 million pounds of steel and 51 million pounds of aluminum for the conductor and metallic return



General Cable facility in Malvern, Arkansas



- Construction of the line will also provide opportunities for other Arkansas businesses



# Plains & Eastern Clean Line results in cleaner air and better conservation of water resources



## ENVIRONMENTAL BENEFITS

**CO<sub>2</sub>**

14 million tons  
carbon dioxide  
reduced

**SO<sub>2</sub>**

38 thousand tons  
sulfur dioxide reduced

**NO<sub>x</sub>**

9 thousand tons  
nitrogen oxide reduced

**HG**

90 pounds  
mercury reduced

**H<sub>2</sub>O**

1.3 million acre-feet  
saved

Source: ICF, June 2010.

# Environmental responsibility and stakeholder engagement are at the center of the business



- Environmental responsibility principles
  - Avoid, minimize, then mitigate any adverse impacts
  - Assure compliance with all environmental regulations
- Working directly with Nature Conservancy and other conservation groups

- Transparent and direct communication
  - Held more than 1200 meetings with stakeholders
  - Met with more than 270 representatives of state and federal agencies and conservation organizations
  - Visited officials in more than 30 counties in 3 states as well as local conservation districts, school boards, farm bureaus, Native American tribes
  - Received more than 770 pages of recorded comments in favor of the Plains & Eastern Clean Line
  - 35 community roundtable meetings earlier this year – 15 in Arkansas

# Building constructive relationships with landowners is critical for Clean Line



## Clean Line will work with landowners to:

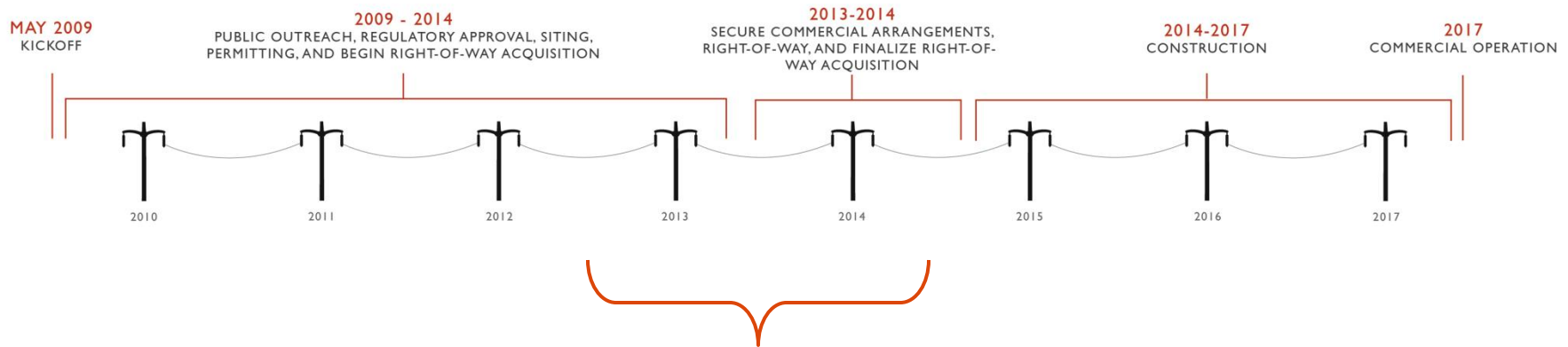
- Communicate plans with landowners prior to construction
- Consider land use impact when choosing structure design and route
- Restore fields impacted by construction
- Compensate for any crop damage

## LANDOWNER CODE OF CONDUCT

Clean Line Energy's Code of Conduct details how Clean Line employees and contractors must treat landowners in a fair and respectful manner.

# Takes many years to pull together approvals and permits but the project will provide long term benefits

## PLAINS & EASTERN CLEAN LINE SCHEDULE



## NEPA ENVIRONMENTAL REVIEW PROCESS



### PUBLIC INVOLVEMENT OPPORTUNITIES



STAKEHOLDER  
FEEDBACK



OPEN  
HOUSE



OFFICIAL  
DECISION

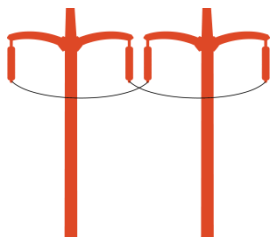


# The Plains & Eastern Clean Line supports economic growth and enhanced quality of life for Arkansans

---



Jobs



Infrastructure



Cleaner energy at competitive prices

# PLAINS & EASTERN

CLEAN LINE

[www.plainsandeasterncleanline.com](http://www.plainsandeasterncleanline.com)