

# A Review of the Omega Technical Violator Program

From Program Start Through May 31, 2007



## Background of the Program

The Omega Technical Violator Program (TVP), which opened in March 2005, is a 300 bed all male facility for offenders who violated a condition of their parole without committing a new crime. Eligible offenders may sign a waiver to the program in lieu of being locked up in jail or returning to the Arkansas Department of Correction. Initial confinement is for a 90-day period. Offenders who return to Omega after their first admission into the program are also held for 90 days

The intent of the program is to teach, promote and encourage positive cognitive and behavioral change that will result in a crime free lifestyle. It is the goal of this program to create a safe environment where residents will be provided the opportunity to examine their lifestyles, identify problem areas and practice new behaviors. Omega TVP targets alcohol/drug addiction and the addictive criminal lifestyles. During the course of the program, emphasis is placed on acknowledging past problems, accepting responsibility for negative actions and practicing new behaviors that will lead to long-term change.

The staff at Omega interact as a team, with each member being constantly involved in the security and treatment process. This consistency allows the resident a more structured base for recovery and presents a united front.

Field Service personnel work closely with Omega staff coordinating intake and release and ensuring that aftercare plans are followed and the continuity of care continues after release.

The foremost goal of Omega, is for each resident to leave the program having acquired basic recovery skills that will provide a basis for long-term change, while simultaneously relieving overcrowding in jails and prisons in Arkansas.

## Report Methodology and Summary

Utilizing the databases maintained by DCC on offenders under DCC supervision, staff reviewed the total number of male offenders who were admitted to and released from the Omega TVP between March 1, 2005 and May 31, 2007.

The results of the review indicate that during that time period, there were 3,370 intakes to the Omega TVP and 3,017 releases from the program. Forty-eight (48) offenders were transferred directly to ADC prior to their release for disciplinary reasons.

Of those released to community supervision, 421 offenders had at least 1 subsequent re-admission to Omega and 498 offenders were subsequently incarcerated in an ADC unit or a DCC center following their initial release from Omega. Fifty-two (52) offenders who previously were released from Omega were being held in county jail awaiting incarceration in a DCC or ADC facility or return to the TVP program.

## Intakes to Omega and Estimated Costs

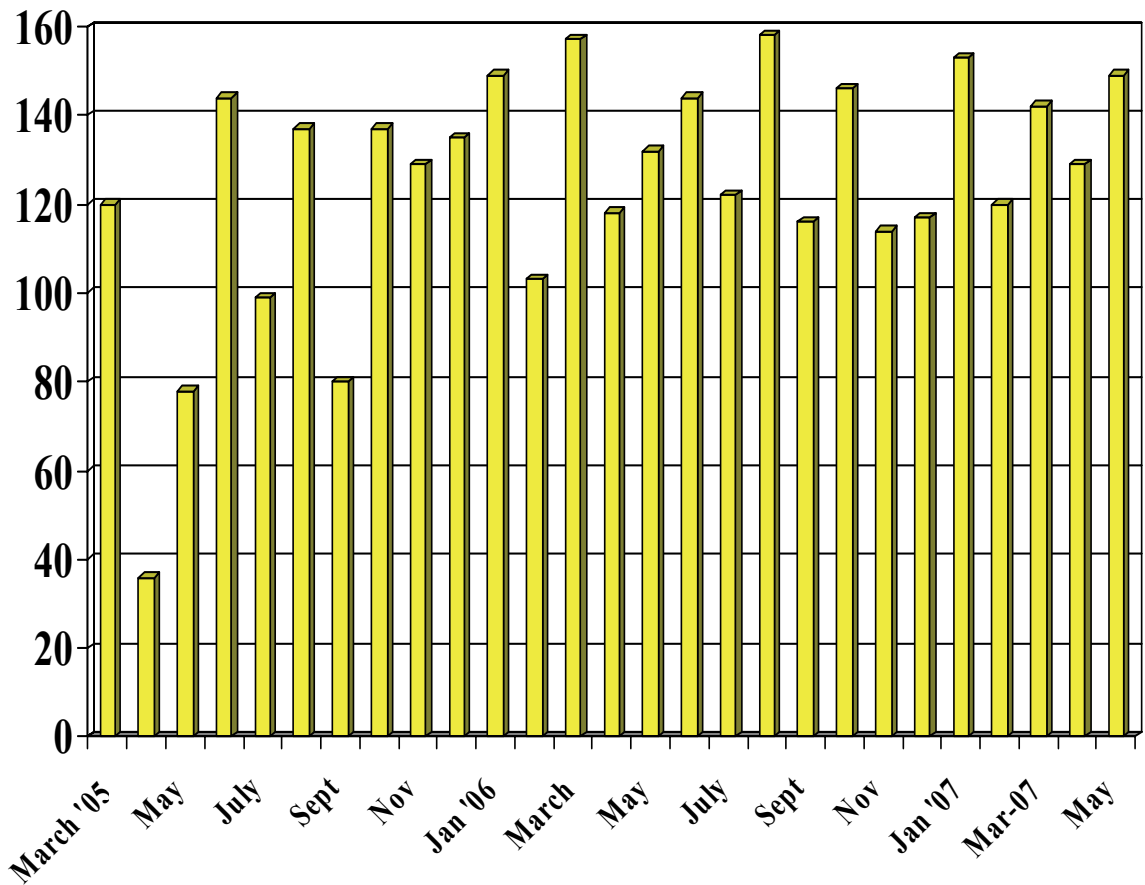
Since the inception of the program, 3,370 offender intakes have occurred as of May 2007. Forty-eight (48) offenders have been transferred directly to ADC due to disciplinary reasons, which account for 1.4% of all admissions.

As of May 31, 2007 the total estimated costs resulting from the Omega Center totaled \$9,199,163. This compares to an estimated cost of \$46,249,618 for a 9 ½ month prison sentence. Nine and a half months was the average length of time parole violators spent in prison prior to the opening of Omega. This figure is based on an estimated per day prison cost of \$48.24 and a per day DCC incarceration cost of \$45.69.

## Intakes by Month Since Start of Operations

Figure 1

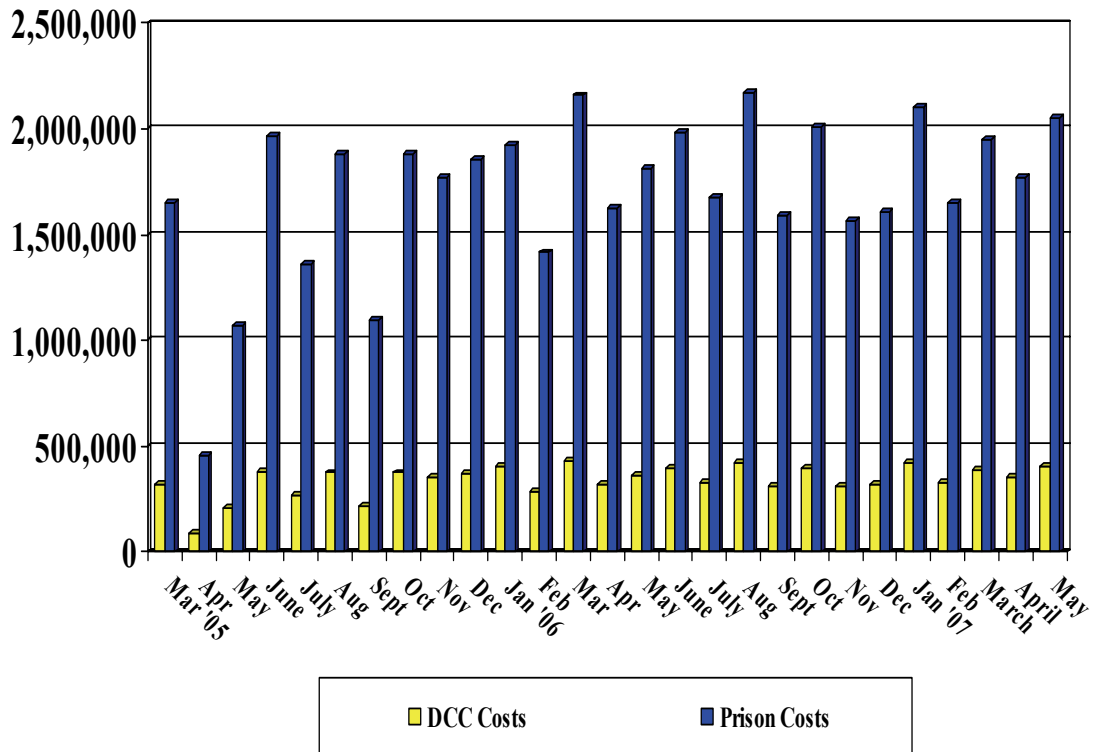
Omega TVP Intakes from March 2005 through May 2007



# Omega TVP vs. Prison Monthly Cost Comparisons

Figure 2

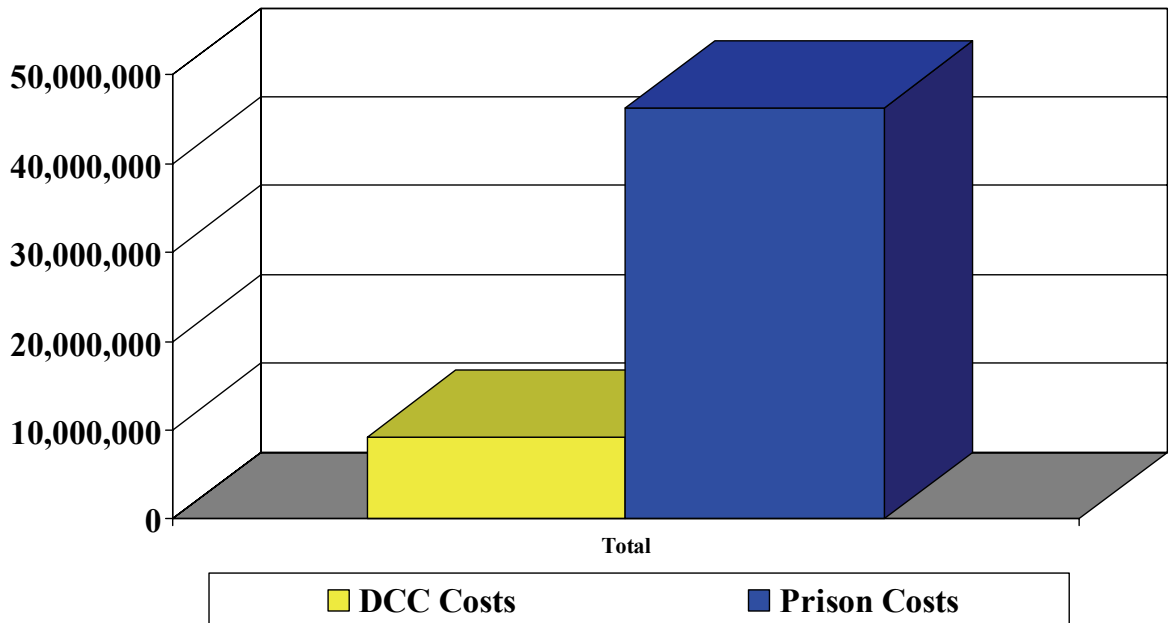
Omega Technical Violator Program  
 Monthly Offender Cost Comparisons Based on Incarceration Costs  
 2005 through May 2007



# Omega TVP vs. Prison Cost Comparisons Since Start of Program

Figure 3

Omega Technical Violator Program  
Offender Cost Comparisons Based on Incarceration Costs  
From March 2005 through May 2007



FY 07 Program Costs to Date

DCC 60 Day Costs = \$4,018,892

Projected 9 ½ Month Prison Costs = \$ 20,155,154

Program Costs to Date

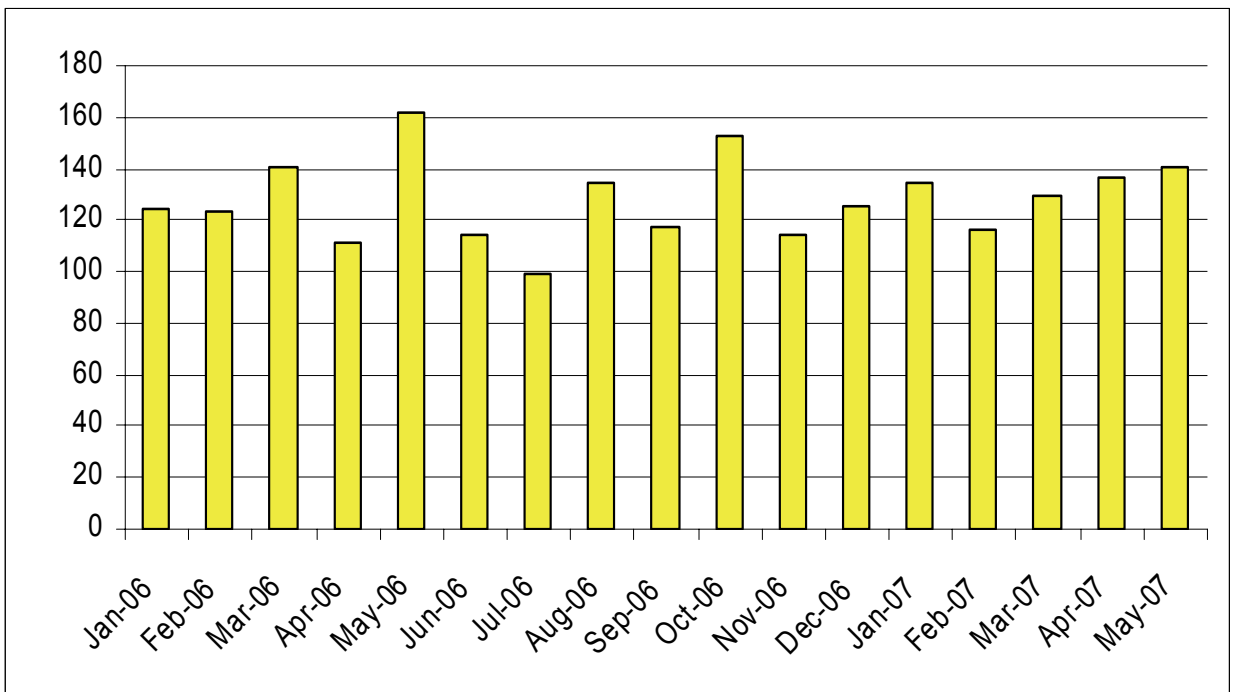
DCC 60 Day Costs = \$9,199,163

Projected 9 ½ Month Prison Costs = \$46,249,618

## Releases from Omega

Figure 4

Omega TVP Releases from January 2006 through May 2007 \*



\* - A monthly count of releases did not become available until January 2006. Releases through December 2005 totaled 806.



## Re-admissions to Omega Following Initial Release

Since May 2005, 3,017 releases have occurred at the Omega TVP and 421 offenders have returned to Omega for at least one subsequent technical violation, or 13.9% of all releases.

Table 1

Summary of Omega Releases, Readmissions, and ADC/DCC Recidivism

	Totals
Total Number of Releases	3017
Total Offenders Readmitted More than Once	421
ADC Admission Following Second or higher TVP Release	77 (18.3%)
DCC Admission Following Second or higher TVP Release	13 (3.1%)

## Recidivism of Omega Releases

Through May 2007, 498 offenders have been incarcerated following their release from Omega accounting. This represents 16.5% of all 3,017 releases.

Of all recidivists, 486 (16.1% of all releases) were subsequently incarcerated in an ADC unit and 12 (less than 1% of all releases) were incarcerated in a DCC facility. Fifty-two (52) offenders sat in county jail backup awaiting incarceration or return to Omega. As noted in Table 2, only 90 of the offenders with multiple admissions recidivated to ADC or DCC.

Table 3

Omega Technical Violator Program Recidivism Detail  
From March 2005 (Program Start) through May 2007

	Number of Offenders	Pct. of Recidivists	Pct. of All Releases
DCC Facility	12	2.4%	0.4%
Diagnostic Unit	415	83.3%	13.8%
East AR Unit	69	13.9%	2.3%
East AR Max	2	0.4%	0.1%
Total	498	100%	16.5%

**A Review of the  
Southeast Arkansas Technical Violator Program  
(Female Program)**

From Program Start Through May 31, 2007



## Background of the Program

The Southeast Arkansas Technical Violator Program (SEA-TVP), which opened in November 2003, is a 25 bed female unit for offenders who violated conditions of parole without committing a new crime. Eligible offenders may sign a waiver to the program in lieu of jail or return to prison. Initial confinement is for a 60 day period. Offenders who return to SEA-TVP after their first admission into the program may be held up to 90 days.

The intent of the program is to teach, promote and encourage positive cognitive and behavioral change that will result in a crime free lifestyle. It is the goal of this program to create a safe environment where residents will be provided the opportunity to examine their lifestyles, identify problem areas and practice new behaviors. SEA-TVP targets alcohol/drug addiction and the addictive criminal lifestyles. During the course of the program, emphasis is placed on acknowledging past problems, accepting responsibility for negative actions and practicing new behaviors that will lead to long-term change.

The staff at SEA-TVP interact as a team, with each member being constantly involved in the security and treatment process. This consistency allows the offender a more structured base for recovery and presents a united front.

Parole/Probation personnel work closely with SEA-TVP staff coordinating intake and release and ensuring that aftercare plans are followed and the continuity of care continues after release.

The foremost goal of SEA-TVP, is for each offender to leave the program having acquired basic recovery skills that will provide a basis for long-term change, while simultaneously relieving overcrowding in jails and prisons in Arkansas.

## Report Methodology and Summary

Utilizing the database maintained by DCC on offenders under supervision, staff reviewed the total number of offenders who were admitted to and released from the SEA-TVP between November 1, 2003 and May 31, 2007.

The results of the review indicate that during that time period, there were 390 intakes to the SEA-TVP and 368 releases from the program. Three (3) offenders (less than 1% of the total) were transferred directly to ADC prior to their release because they did not meet program criteria.

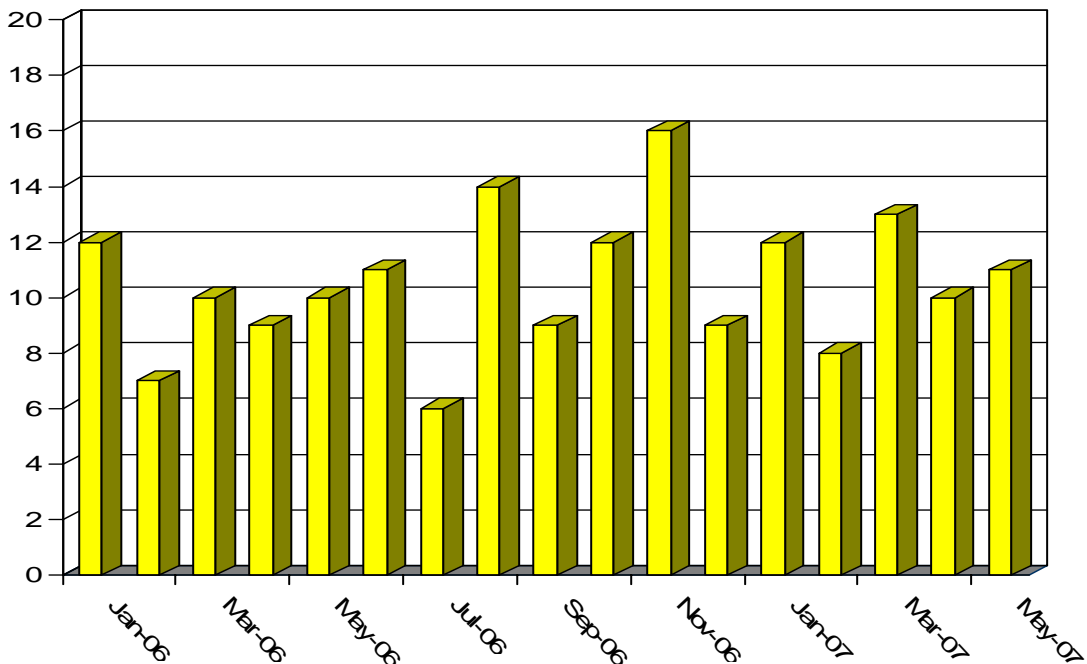
Of those released to community supervision, 52 offenders had at least 1 re-admission to SEA-TVP and 62 offenders were subsequently incarcerated in an ADC unit or a DCC center following their initial release from SEA-TVP. Five (5) offenders released previously from the SEA-TVP were being held in a county jail awaiting incarceration in a DCC or ADC facility or return to the TVP program.

## Intakes by Month Since January 2006 to Date

As of May 31, 2007 the total estimated costs resulting from the SEA-TVP totaled \$1,059,753. This compares to an estimated cost of \$4,907,179 for a 9 ½ month prison sentence. Nine and a half months was the average length of time parole violators spent in prison prior to the opening of SEA-TVP. This figure is based on an estimated per day prison cost of \$48.24 and a per day DCC incarceration cost of \$45.69.

Figure 1

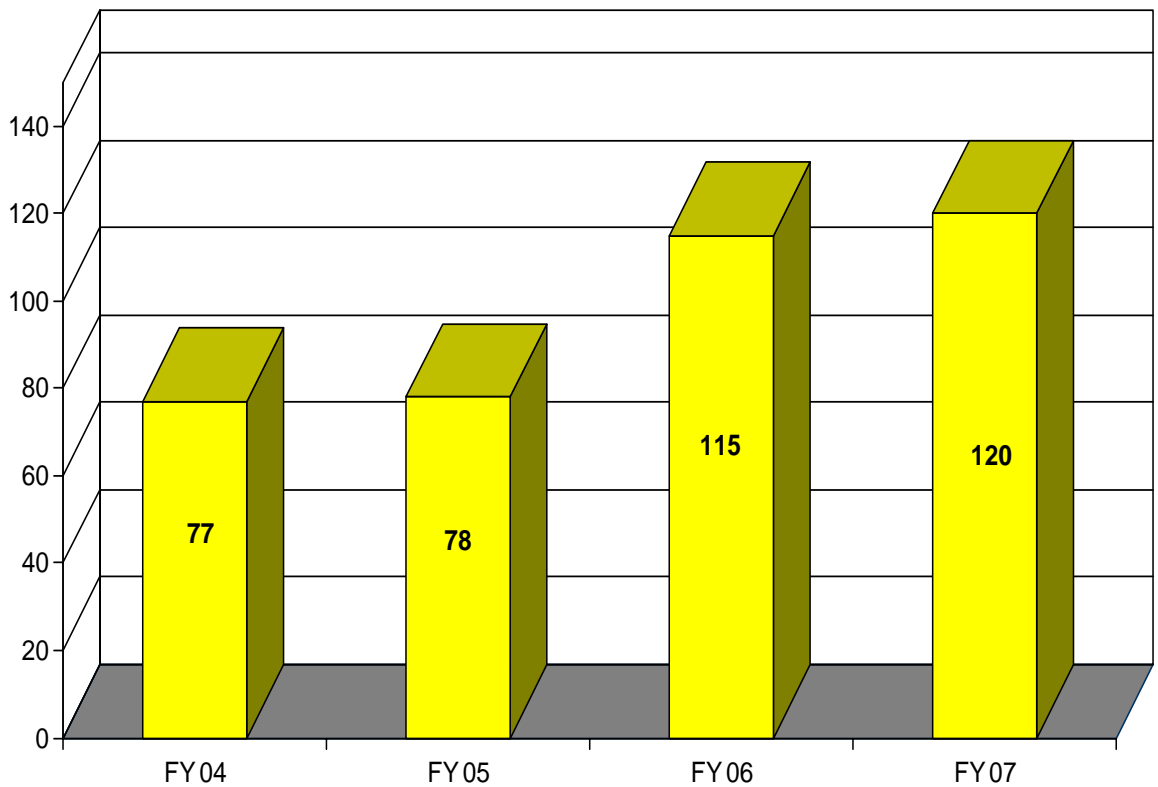
SEA-TVP Intakes from January 2006 through May 2007



\* - A monthly count of intakes was not available until January 2006. Intakes through December 2005 totaled 212.

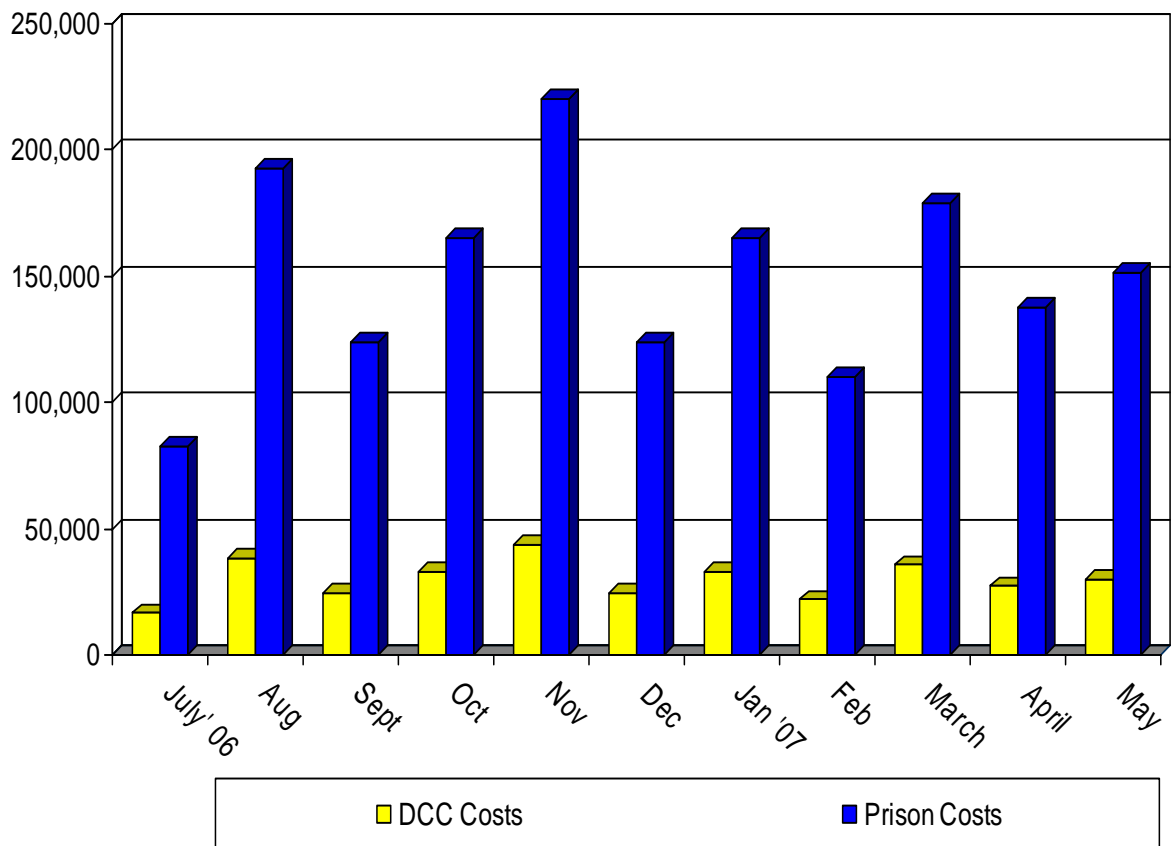
# SEA-TVP Fiscal Year Intakes November 2003 through May 2007

Figure 2



# SEA-TVP Monthly Cost Comparisons July 2006 through May 2007

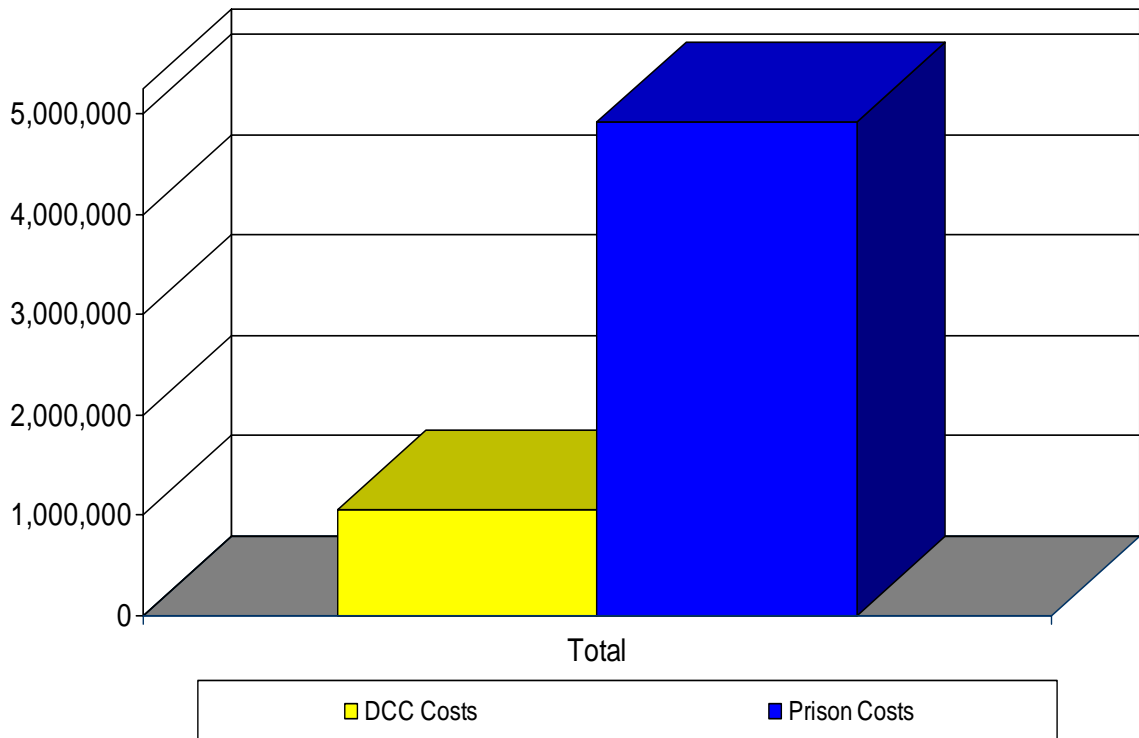
Figure 3





# SEA-TVP Cost Comparisons November 2003 through May 2007

Figure 4



FY 07 Program Costs to Date

DCC 60 Day Costs = \$328,968

Projected 9 ½ Month Prison Costs = \$1,649,808

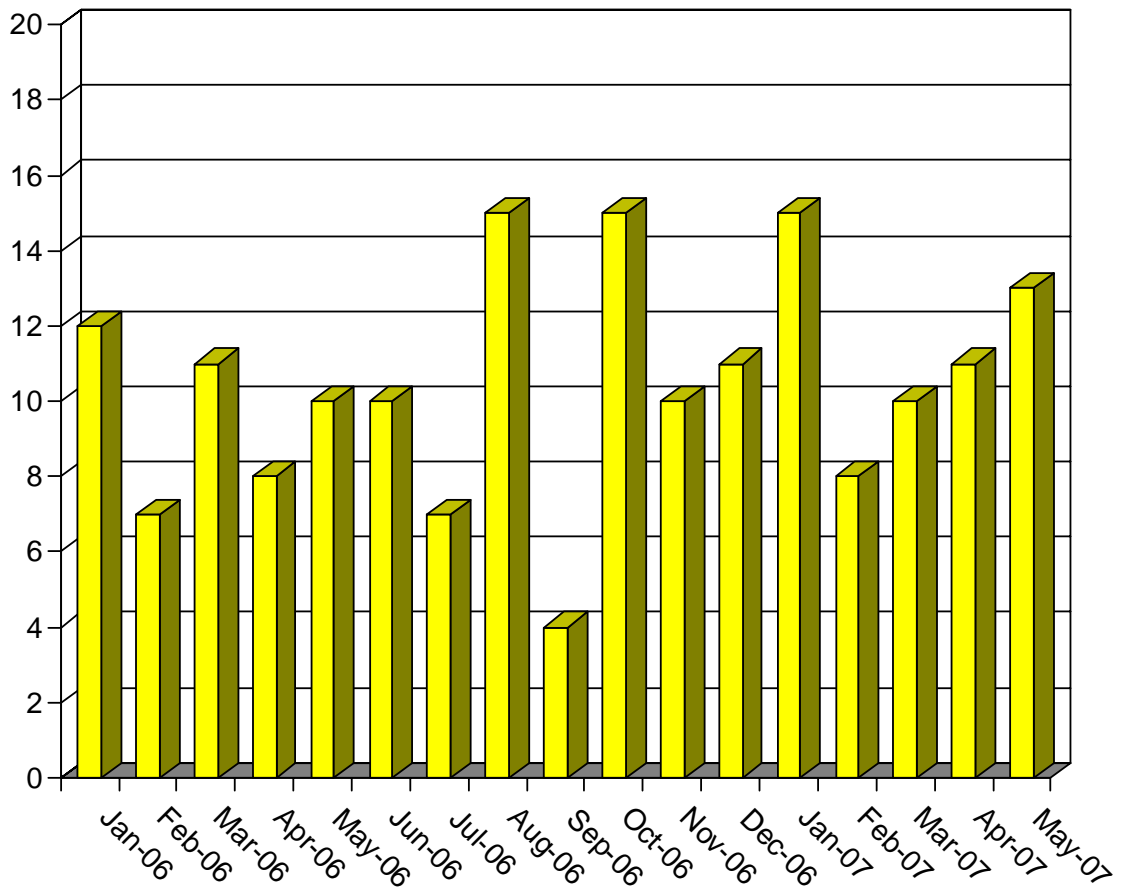
Program Costs to Date

DCC 60 Day Costs = \$1,059,753

Projected 9 ½ Month Prison Costs = \$4,908,179

# Releases from SEA-TVP January 2006 through May 2007 \*

Figure 5



\* - A monthly count of releases was not available until January 2006. Releases through December 2005 totaled 192.

## Recidivism of SEA-TVP Releases

Through May 2007, 62 of 308 offenders have been incarcerated following their release from SEA-TVP. This represents 19.2% of 308 offenders released.

Of all recidivists, 53 (17.2% of all offenders) were subsequently incarcerated in an ADC unit and 6 (1.9% of all offenders) were incarcerated in a DCC facility. Five (5) offenders were in county jail backup awaiting incarceration or return to SEA-TVP.

Table 1

SEA-TVP Recidivism Detail  
November 2003 through May 2007

	Number of Offenders	Pct. of Recidivists	Pct. of All Releases
DCC Facility	6	10.2%	1.9%
McPhereson	53	89.8%	17.2%
Total	59	100%	19.2%