



House Committee on Aging, Children & Youth, Legislative & Military Affairs

ADA Compliance Review



DIVISION OF ARKANSAS STATE PARKS

ARKANSAS STATE PARKS UPDATE



Since the early 1990's Arkansas State Parks have designed, constructed, and provided access to our places and facilities in compliance with the Americans with Disabilities Act and the published standards for accessible design.

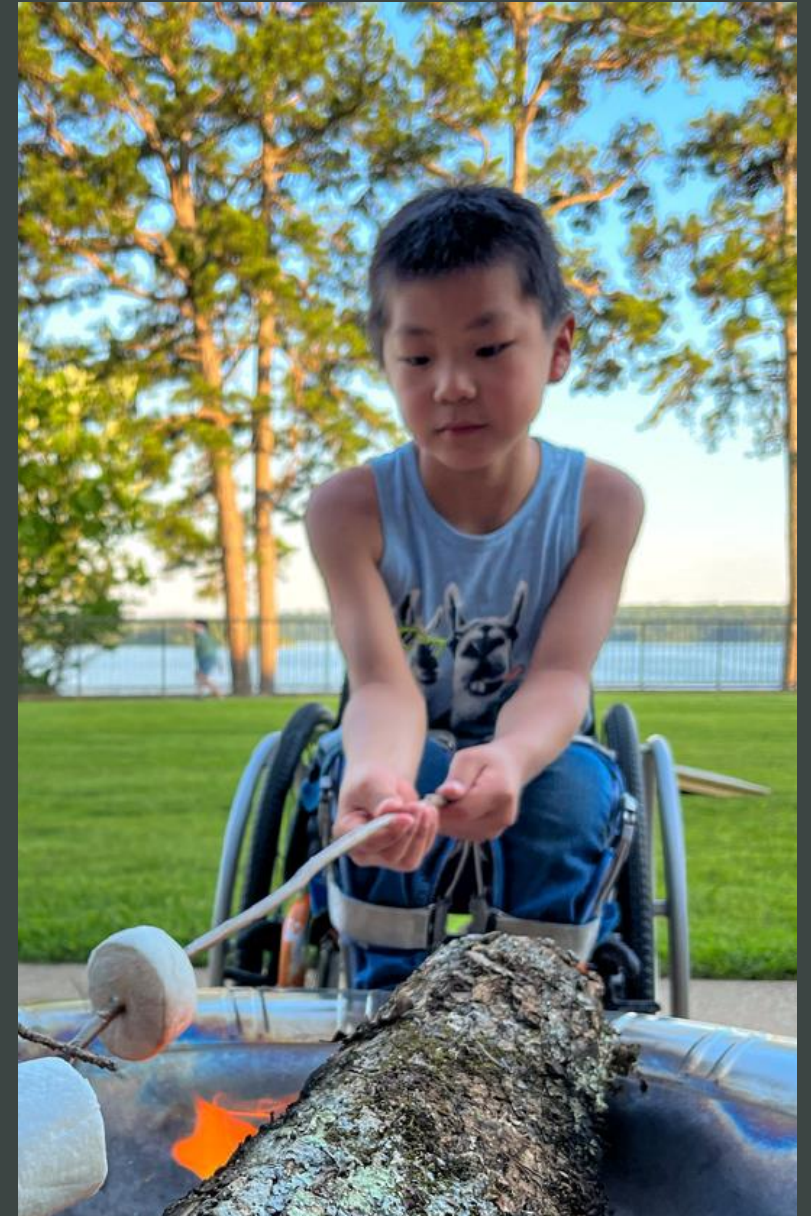


ACCESSIBILITY
ACROSS
ARKANSAS

In 2022, Arkansas State Parks began working with the non-profit Accessibility Across Arkansas to improve access to our parks for individuals with disabilities.

ARKANSAS STATE PARKS UPDATE

A Memorandum of Agreement between the Division of State Parks and Accessibility Across Arkansas was signed in 2023, with the specific goal of providing accessible all-terrain wheelchair devices in select state parks.



ARKANSAS STATE PARKS UPDATE



In 2024, Arkansas State Parks purchased its first Action Trackchair for use at Logoly State Park (Columbia County). Additionally, Accessibility Across Arkansas applied for and was awarded a grant (Christopher & Dana Reeve Foundation) for purchase of an additional Trackchair, and Arkansas State Parks applied for and was also awarded a Trackchair from the National Association of State Park Directors – Bronco Wild Fund.

ARKANSAS STATE PARKS UPDATE



The screenshot shows the homepage of the Becoming rentABLE website. At the top, there is a navigation bar with the logo on the left, which includes a stylized house icon with a person inside. To the right of the logo is the text "Becoming rentABLE" and "The Accessible Short-Term Rental Experts". Further right is a "Newsletter Signup!" button and a search bar with the placeholder text "Search by Keyword" and a "Search" button. Below the navigation bar is a horizontal menu with links: "About Us", "Find Rentals", "Destinations", "Education", "BeABLE Partners", and "Certification". The main content area features a large background image of a diverse family (an elderly woman, a young boy, a man in a wheelchair, a young girl, a young woman, and a man) walking on a beach. Overlaid on this image is the text "Let's include everyone on vacation!" in large white font, followed by "Certified Accessible Short-Term Rentals in the U.S. and Canada" in a smaller white font. At the bottom of the image are two blue buttons: "Search Properties" and "Certify My Property".

Let's include everyone on vacation!

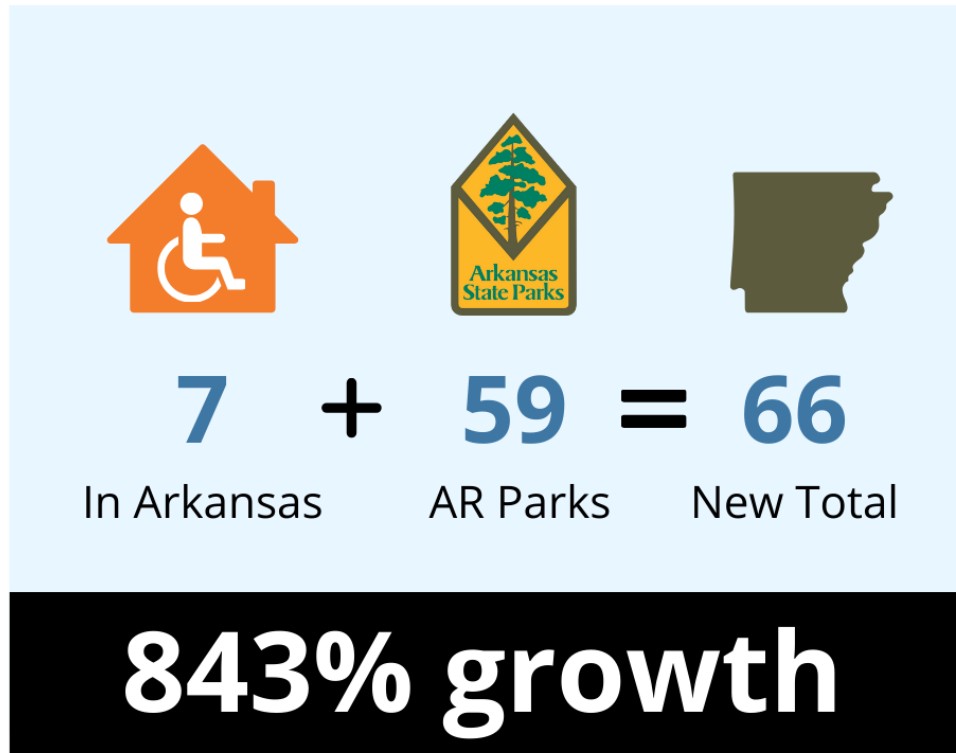
Certified Accessible Short-Term Rentals in the U.S. and Canada

[Search Properties](#) [Certify My Property](#)

In 2024, Arkansas State Parks partnered with Becoming rentABLE to be the first US state park system to certify accessible lodging accommodations.

Becoming rentABLE Mobility Certification-

Increasing Accessible Lodging with Cabins, Yurts, Lodge Units



16 Parks
with Certified Units

Crowley's Ridge State Park
Daisy State Park
DeGray Lake Resort State Park
Devil's Den State Park
Historic Washington
Lake Catherine
Lake Chicot State Park
Lake Fort Smith
Lake Ouachita State Park
Moro Bay State Park
Mount Magazine State Park
Mount Nebo State Park
Ozark Folk Center State Park
Petit Jean State Park
Queen Wilhelmina
Village Creek State Park

Accessibility at Arkansas State Parks

Visual Awareness with Ambassador Content



Becoming rentABLE Ambassadors:

Alwyn Uys
Jessie & Mackenzie Swartz
The Allen Family

Arkansas State Parks Visited:

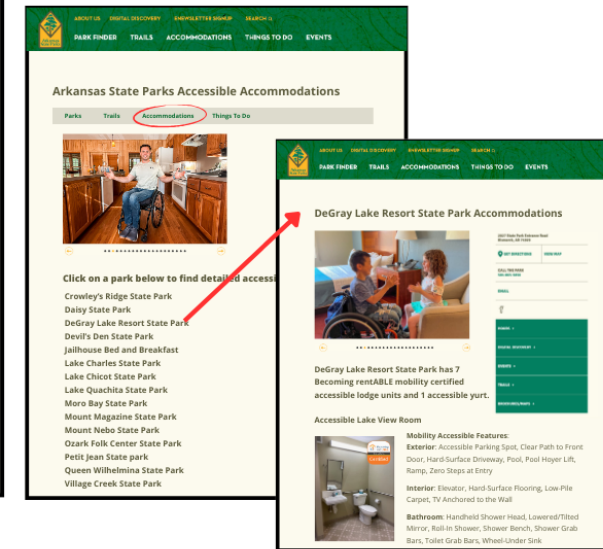
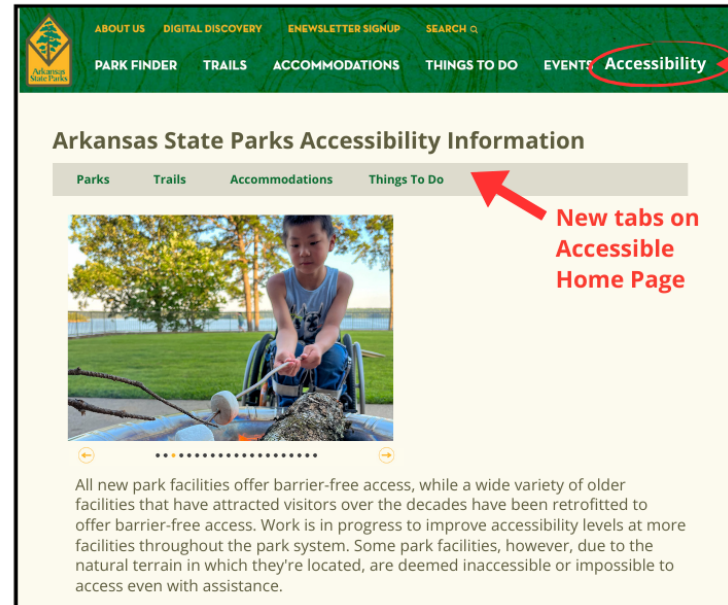
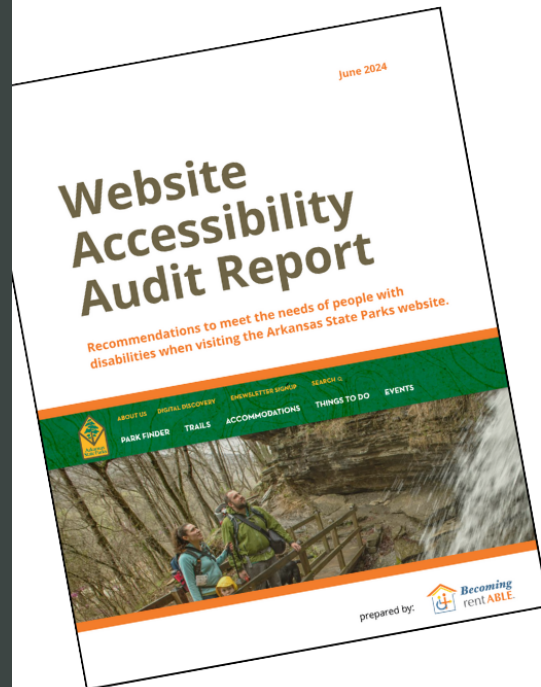
Moro Bay, Woolly Hollow, Petit Jean,
DeGray Lake, Crater of Diamonds

Total Ambassador Deliverables:

Instagram Reels - 8
Photographs - 22
Blog - 1

Website Audit

User-Friendly/Inclusive Recommendations for All Visitors



The Division of State Parks has established an accessibility working group to continue to examine best practices in meeting the needs of all guests to our state parks.





ARKANSAS STATE PARKS UPDATE

Questions?

