

EXHIBIT E1

ADA

Americans with
Disabilities Act





Arkansas Fire Prevention Code 2021

- ADA requirements
- New Construction
- Existing Construction
- Types of structures
 - Assembly
 - Education
 - Institutional



Assembly Occupancy

Assembly Occupancies

- Seating that is arranged in distinct levels
- Levels are composed of multiple rows
- May be composed single rows
- Are accessed from a separate level



Group

- A-1
- A-2
- A-4
- A-5



Education Occupancy

Education Occupancies

- Schools
- Day Cares
- Storm Shelters in Group E



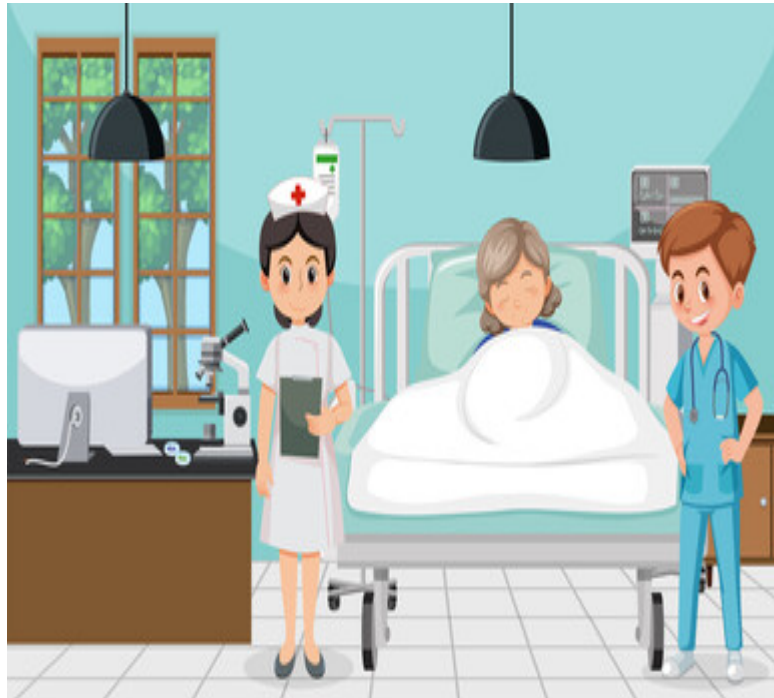
- Group E
- Based on occupant load



Institutional Occupancy

Institutional Occupancies

- 24 hour supervised structures i.e. alcohol & drug centers, assisted living facilities, group homes
- Foster care facilities, Hospitals, Nursing Homes
- Correctional Centers, Detention Centers, jails, prisons
- Adult Day Care



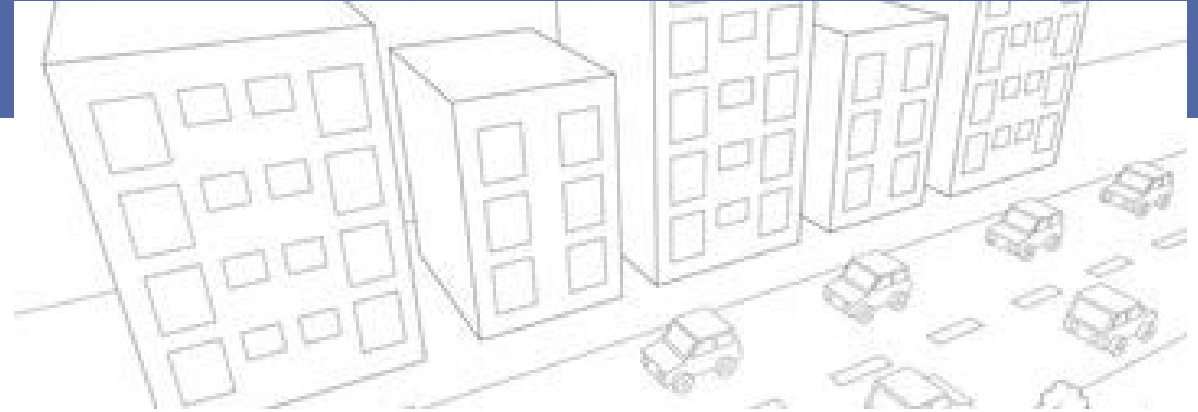
- Institutional Group
 - I-1
 - I-2
 - I-3
 - I-4

ADA Compliance



New Construction of A, E, or I Groups

- Must meet the requirements of the Arkansas Fire Prevention Codes 2021 edition and the Federal Requirements for the American with Disabilities Act



Existing Construction Of A, E, or I Groups

- Go to Legislature and have a time frame set to bring all existing buildings of the A, E, or I Group up to ADA compliance. (we did this in the past with the addition of fire sprinklers in healthcare).
- Suggest giving people a 12 year time span.