

STATE ATHLETIC COMMISSION

Enabling Laws

Act 174 of 2005
Act 131 of 1927 as amended.
A.C.A. § 17-22-201

History and Organization

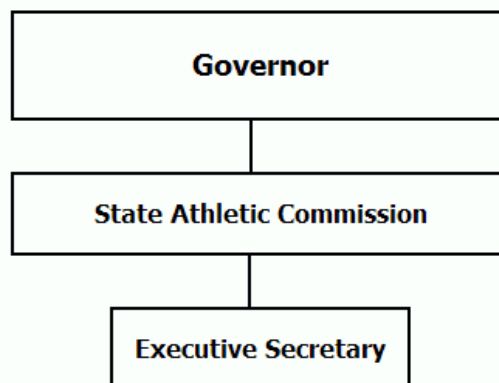
The State Athletic Commission was created in 1927 by Act 131. It has a two-fold purpose. Each goal is inextricably linked and prudent promulgation of the Rules & Regulations, as well as the statutory amendments or revisions, which should keep both goals balanced.

The first goal of the State Athletic Commission is to protect the health, safety and welfare of the participants as well as the public as they are involved in the professional sports regulated by the State Athletic Commission.

The second goal is to preserve and insure the entertainment value of the professional sports that the State Athletic Commission regulates.

In order to protect the health, safety and welfare of those described, the State Athletic Commission issues licenses to participants, officials, promoters and other affiliated personnel. In boxing, the most dangerous sport, the State Athletic Commission maintains a database shared with the Association of Boxing Commissioners in order to honor medical and administrative suspensions and revocations. Through the licensing of promoters, posting of bonds and passage of regulations supervising the events - the State Athletic Commission protects the welfare of the public.

In order to preserve and insure the entertainment value of professional boxing, kickboxing and wrestling, the State Athletic Commission creates rules and regulations that prevent fight "fixing" and the over-regulation of the sports, which could unduly remove the competitive drama for which they were designed.



Agency Commentary

The Arkansas Athletic Commission is requesting change level increases for the 2007-09 biennium in the following line items: Extra Help, Personal Services Matching, and Operating Expenses.

The Commission is requesting an increase of \$5,000 each year in Extra Help along with the necessary Personal Services Matching, due to the increase workload for the Commission. The Commission has had an increase in the number of boxing, kickboxing, wrestling, and mixed martial arts events held in the State, which requires more supervision.

The Commission wants to reallocate \$2,000 in travel expenses from Travel and Conference Fees Line item to Operating Expenses. This shift is to cover Board member travel and expenses in state instead of Travel and Training out of state. The Commission has seven (7) members that travel to several sporting evens around the State.

The Commission has sufficient funding to cover this request for additional appropriation.

Audit Findings

DIVISION OF LEGISLATIVE AUDIT
 AUDIT OF :
 ARKANSAS STATE ATHLETIC COMMISSION
 FOR THE YEAR ENDED JUNE 30, 2004

Findings	Recommendations
None	None

Publications

A.C.A 25-1-204

Name	Statutory Authorization	Required for		# Of Copies	Reason (s) for Continued Publication and Distribution
		Governor	General Assembly		
None	N/A	N	N	0	N/A

Agency Position Usage Report

FY2004-2005						FY2005-2006						FY2006-2007					
Authorized in Act	Budgeted			Unbudgeted	% of Authorized Unused	Authorized in Act	Budgeted			Unbudgeted	% of Authorized Unused	Authorized in Act	Budgeted			Unbudgeted	% of Authorized Unused
	Filled	Unfilled	Total	Total			Filled	Unfilled	Total	Total			Filled	Unfilled	Total	Total	
0	0	0	0	0	0.00%	0	0	0	0	0	0.00%	0	0	0	0	0	0.00%

Analysis of Budget Request

Appropriation: 609 - Athletic Commission-Operations

Funding Sources: MAB-Arkansas Athletic Commission Fund

The Arkansas Athletic Commission oversees all professional or semi-professional matches or exhibitions in the State that involve wrestling, boxing, kick boxing, martial arts, or any combination of these sporting activities. The Commission is funded from annual license fees of boxers, wrestlers, managers, matchmakers, promoters, referees, physicians, timekeepers, and other persons arranging, participating in or otherwise dealing in matches and exhibitions regulated by the Commission. The Commission has authority to establish such fees in accordance with Act 1085 of 1999. Fees of 5% of the total gross receipts from admission charges from matches and exhibitions are collected.

A cost of living increase is not incorporated in Base Level pending the outcome of the Classification and Compensation Study. The Base Level request of \$5,000 for FY08 and FY09 for Regular Salaries is for board member Stipend payments. FY07 salary levels have been held flat each year for all incumbents. Personal Services Matching may reflect increases in the Base Level due to the Social Security Tax maximum income limit and certain increases in Worker's Compensation and Unemployment Tax rates. Personal Services Matching also includes a \$30 increase in the monthly contribution for State employee's health insurance for a total State match per budgeted employee of \$350 per month.

The Commission is requesting a Change Level of \$5,627 each year of the Biennium. The increase is for Extra Help line item along with Personal Services Matching due to the increased workload due to an increased number of boxing and exhibitions held. The increase in Operating Expense line item and the decrease in Travel-Conference Fees line item are requested in order to reallocate expenses.

The Executive Recommendation provides for the Agency Request.

Appropriation

Appropriation: 609 Athletic Commission-Operations
Funding Sources: MAB-Arkansas Athletic Commission Fund

Historical Data

Agency Request and Executive Recommendation

Commitment Item		Historical Data			Agency Request and Executive Recommendation			Agency Request and Executive Recommendation		
		2005-2006 Actual	2006-2007 Budget	2006-2007 Authorized	2007-2008			2008-2009		
					Base Level	Agency	Executive	Base Level	Agency	Executive
Regular Salaries	5010000	2,050	5,000	0	5,000	5,000	5,000	5,000	5,000	5,000
#Positions		0	0	0	0	0	0	0	0	0
Extra Help	5010001	14,990	15,000	15,000	15,000	20,000	20,000	15,000	20,000	20,000
#Extra Help		1	1	1	1	1	1	1	1	1
Personal Services Matching	5010003	3,190	3,411	1,157	3,411	4,038	4,038	3,411	4,038	4,038
Operating Expenses	5020002	19,274	21,800	21,800	21,800	23,800	23,800	21,800	23,800	23,800
Conference & Travel Expenses	5050009	1,505	5,000	5,000	5,000	3,000	3,000	5,000	3,000	3,000
Professional Fees	5060010	0	0	0	0	0	0	0	0	0
Data Processing	5090012	0	0	0	0	0	0	0	0	0
Grants and Aid	5100004	15,000	15,000	15,000	15,000	15,000	15,000	15,000	15,000	15,000
Capital Outlay	5120011	0	5,000	5,000	0	0	0	0	0	0
Boys and Girls Clubs Grants/Aids	5900046	38,000	0	0	0	0	0	0	0	0
Total		94,009	70,211	62,957	65,211	70,838	70,838	65,211	70,838	70,838
Funding Sources										
Fund Balance	4000005	151,543	111,608		93,278	93,278	93,278	74,440	74,440	74,440
Special Revenue	4000030	54,074	51,881		46,373	52,000	52,000	46,373	52,000	52,000
Total Funding		205,617	163,489		139,651	145,278	145,278	120,813	126,440	126,440
Excess Appropriation/(Funding)		(111,608)	(93,278)		(74,440)	(74,440)	(74,440)	(55,602)	(55,602)	(55,602)
Grand Total		94,009	70,211		65,211	70,838	70,838	65,211	70,838	70,838

The FY07 Budgeted amount in Regular Salaries and Personal Services Matching exceeds the authorized amount due to salary and matching rate adjustment during the 2005-2007 biennium for Board Member Stipends. The Boys and Girls Clubs Grants/Aid line item was a one time grant.

Change Level by Appropriation

Appropriation: 609-Athletic Commission-Operations
Funding Sources: MAB-Arkansas Athletic Commission Fund

Agency Request

Change Level		2007-2008	Pos	Cumulative	% of BL	2008-2009	Pos	Cumulative	% of BL
BL	Base Level	65,211	0	65,211	100.0	65,211	0	65,211	100.0
C01	Existing Program	5,627	0	70,838	108.6	5,627	0	70,838	108.6
C04	Reallocation	0	0	70,838	108.6	0	0	70,838	108.6

Executive Recommendation

Change Level		2007-2008	Pos	Cumulative	% of BL	2008-2009	Pos	Cumulative	% of BL
BL	Base Level	65,211	0	65,211	100.0	65,211	0	65,211	100.0
C01	Existing Program	5,627	0	70,838	108.6	5,627	0	70,838	108.6
C04	Reallocation	0	0	70,838	108.6	0	0	70,838	108.6

Justification

C01	The increases are for additional Extra Help appropriation due to increased workload. The Commission has had an increase in the number of boxing, kickboxing, wrestling, and mixed martial arts events held in the State, which requires more supervision.
C04	Shifting \$2,000 milage and conference fees for employee travel and training to travel expenses incurred by Board Members. The Commission has seven (7) members that travel to several sporting evens around the State.