

ARKANSAS BEEF COUNCIL

Enabling Laws

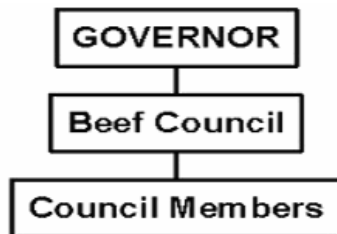
Act 8 of 2005
A.C.A. §2-35-303

History and Organization

The Arkansas Beef Council was created by Arkansas Code Annotated §2-35-303. Its mission is to promote the growth and development of the cattle industry in Arkansas through programs of research, promotion and market development activities.

The Council is made up of seven members appointed by the Governor. Three are nominated by the Arkansas Cattlemen's Association, three by the Arkansas Farm Bureau Federation, and one member must be an Arkansas auction market operator. The Council is administered through an agreement between the Arkansas Beef Council and the Arkansas Farm Bureau Federation.

The Council administers a \$1.00 per head assessment on all cattle sold in the State. The assessment is collected by the Miscellaneous Tax Section of the Department of Finance & Administration. Funds are deposited in a State Treasury account and are disbursed by the Council to fund beef research and promotion efforts.



Agency Commentary

The budget request for the Arkansas Beef Council for the 2007-2009 Biennium is Base Level and will be funded entirely by special revenues collected from a \$1.00 per head assessment on cattle sold in the State.

Allocation of these funds will be made and approved by the Arkansas Beef Council. Distributions will be made to fund beef-related research at the University of Arkansas and transmitted to the national organization (Cattlemen's Beef Board) as required by the federal Beef Research and Promotion Act. Various promotion and information projects will be conducted within the State as approved and administered by the Council.

Projects are individually approved and monitored by the Council. Project proposals are addressed during the third quarter of the fiscal year and in the annual operating plan developed prior to the start of the next fiscal year.

Audit Findings

DIVISION OF LEGISLATIVE AUDIT
AUDIT OF :
ARKANSAS BEEF COUNCIL
FOR THE YEAR ENDED JUNE 30, 2006

Findings

Recommendations

None

None

Publications

A.C.A 25-1-204

Name	Statutory Authorization	Required for		# Of Copies	Reason (s) for Continued Publication and Distribution
		Governor	General Assembly		
Beef Checkoff Update	2-35-301	N	N	10,000	Provides an update to cattle producers whose cattle are assessed on the projects and activities of the council

Agency Position Usage Report

FY2004-2005						FY2005-2006						FY2006-2007					
Authorized in Act	Budgeted			Unbudgeted	% of Authorized Unused	Authorized in Act	Budgeted			Unbudgeted	% of Authorized Unused	Authorized in Act	Budgeted			Unbudgeted	% of Authorized Unused
	Filled	Unfilled	Total	Total			Filled	Unfilled	Total	Total			Filled	Unfilled	Total	Total	
0	0	0	0	0	0.00%	0	0	0	0	0	0.00%	0	0	0	0	0	0.00%

Analysis of Budget Request

Appropriation: 675 - Beef Council-Operations

Funding Sources: SBC - Arkansas Beef Council Fund

The Arkansas Beef Council implements consumer and industry information programs, advertising and research programs, and beef-related promotion. The Council is funded entirely by special revenue collected from a \$1.00 per head assessment on cattle sold in Arkansas. The Council distributes approximately 50 percent of these funds to the national Cattlemen's Beef Promotion and Research Board for consumer and industry information programs, advertising and research programs, and beef-related promotion. The remaining 50 percent is used for Arkansas beef promotion and research, operation and maintenance of the Council office, and expenses of Council members.

The Agency is requesting Base Level appropriation of \$1,100,000 each year of the 2007-2009 biennium.

The Executive Recommendation provides for the Agency Request.

Appropriation

Appropriation: 675 Beef Council-Operations
Funding Sources: SBC - Arkansas Beef Council Fund

Historical Data

Agency Request and Executive Recommendation

Commitment Item	2005-2006	2006-2007	2006-2007	2007-2008			2008-2009		
	Actual	Budget	Authorized	Base Level	Agency	Executive	Base Level	Agency	Executive
Operating Expenses 5020002	10,404	50,000	50,000	50,000	50,000	50,000	50,000	50,000	50,000
Conference & Travel Expenses 5050009	0	10,000	10,000	10,000	10,000	10,000	10,000	10,000	10,000
Professional Fees 5060010	0	3,000	3,000	3,000	3,000	3,000	3,000	3,000	3,000
Data Processing 5090012	0	0	0	0	0	0	0	0	0
Capital Outlay 5120011	0	0	0	0	0	0	0	0	0
Research & Development 5900031	920,670	1,037,000	1,037,000	1,037,000	1,037,000	1,037,000	1,037,000	1,037,000	1,037,000
Total	931,074	1,100,000	1,100,000	1,100,000	1,100,000	1,100,000	1,100,000	1,100,000	1,100,000
Funding Sources									
Fund Balance 4000005	91,995	111,210		90,000	90,000	90,000	90,000	90,000	90,000
Special Revenue 4000030	950,289	1,078,790		1,100,000	1,100,000	1,100,000	1,100,000	1,100,000	1,100,000
Total Funding	1,042,284	1,190,000		1,190,000	1,190,000	1,190,000	1,190,000	1,190,000	1,190,000
Excess Appropriation/(Funding)	(111,210)	(90,000)		(90,000)	(90,000)	(90,000)	(90,000)	(90,000)	(90,000)
Grand Total	931,074	1,100,000		1,100,000	1,100,000	1,100,000	1,100,000	1,100,000	1,100,000