

# STATE BOARD OF REGISTRATION FOR PROF GEOLOGIST

## Enabling Laws

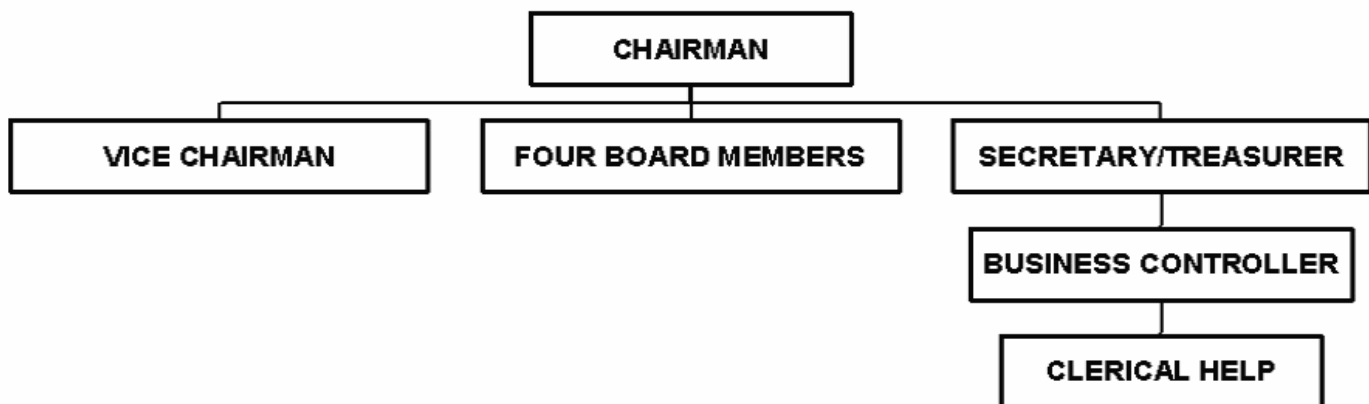
Act 90 of 2005  
Act 701 of 1987 as amended  
A.C.A. § 17-32-101 et seq.

## History and Organization

Act 701 of 1987 established the Board of Registration for Professional Geologists. The purpose of the Board is to oversee the practice of geology in the State of Arkansas in the public sector. The primary mission is to regulate such practice by registration and certification of qualified geologists and promulgate and enforce the regulations that provide the standards for practicing geology in Arkansas, in order to protect the public.

In 1988, the Board of Registration for Professional Geologists, along with several other states, founded the National Association of State Boards of Geology.

The Board of Registration for Professional Geologists consists of seven members appointed by the Governor or set by the Act. Five members are registered geologists representing academia, government, a company, an independent or consultant, and a geologist-at-large. One member is appointed for the public-at-large and the Director of the Arkansas Geological Commission is a permanent ex-officio member. The Board employs one Business Controller.



## Agency Commentary

The Board of Registration for Professional Geologists has recognized 1,885 registered geologists, 884 having a current status. There are 2 geologists-in-training, and currently 5 applications for registration on file. The Board is authorized to collect up to \$60.00 per year, per registrant in renewal fees; however, the current annual renewal fee is set at \$50.00. Other fees collected include \$20 application fee, \$60.00 initial registration fee, and \$20 renewal fee for geologists-in-training. In addition, penalty fees at the rate of 50% are charged to those renewals paid during a six-month

penalty period. Reinstatement fees are double the annual renewal fee and require Board approval. Act 676 of 2005 gave the Board the authority to collect up to \$600.00 for a temporary permit. This permit allows geologists registered in other states to legally work in Arkansas for less than one year without having to complete the entire registration process. The current fee established for a temporary permit is \$500.00.

The Board is located at the Geological Commission office in Little Rock, which provides office space and use of major equipment. The revenue from registration and other fees supports salaries, supplies, postage, telephone service and participation in the National Association of State Boards of Geology (ASBOG) which provides the examination required for registration.

An increase of \$2,400 in Operating Expenses in the second year of the biennium corresponds with the agency's IT plan for updating equipment. In addition, the agency is requesting an increase for both years of the 2007-09 biennium of \$550.00. This increase will be used for telecommunications wired, network service expense, association & membership dues, and other commodities, materials & supplies. All of the increases are essential for Agency operations. Cash revenues are sufficient to cover the Board's biennial request.

**Audit Findings**

DIVISION OF LEGISLATIVE AUDIT  
 AUDIT OF :  
 STATE BOARD OF REGISTRATION FOR PROFESSIONAL GEOLOGISTS  
 FOR THE YEAR ENDED JUNE 30, 2004

Findings	Recommendations
None	None

**Employment Summary**

	Male	Female	Total	%
White Employees	0	1	1	100 %
Black Employees	0	0	0	0 %
Other Racial Minorities	0	0	0	0 %
Total Minorities			0	0 %
Total Employees			1	100 %

## Publications

### A.C.A 25-1-204

Name	Statutory Authorization	Required for		# Of Copies	Reason (s) for Continued Publication and Distribution
		Governor	General Assembly		
Directory of Professional Geologists and GIT's Registered in Arkansas	A.C.A. 17-32-207	N	N	300	Public Record Publication and distribution is mandated by law.

**Agency Position Usage Report**

FY2004-2005						FY2005-2006						FY2006-2007					
Authorized in Act	Budgeted			Unbudgeted	% of Authorized Unused	Authorized in Act	Budgeted			Unbudgeted	% of Authorized Unused	Authorized in Act	Budgeted			Unbudgeted	% of Authorized Unused
	Filled	Unfilled	Total	Total			Filled	Unfilled	Total	Total			Filled	Unfilled	Total	Total	
1	1	0	1	0	0.00%	1	1	0	1	0	0.00%	1	1	0	1	0	0.00%

## **Analysis of Budget Request**

**Appropriation:** 851 - Geologist-Cash in Treasury

**Funding Sources:** NEG - Cash in Treasury

The Board of Registration for Professional Geologists was created by Act 701 of 1987. The primary duty of the Board is to regulate the practice of geology in the State of Arkansas in the public sector. The Board is a cash agency funded from the receipt of fees charged pursuant to Arkansas Code Annotated §17-32-307.

A cost of living increase is not incorporated in Base Level pending the outcome of the Classification and Compensation Study. The Base Level request for Regular Salaries is \$27,342 for FY08 and \$27,342 FY09. FY07 salary levels have been held flat each year. Personal Services Matching reflects increases in the Base Level due to the Social Security Tax maximum income limit and certain increases in Worker's Compensation and Unemployment Tax rates. Personal Services Matching also includes a \$30 increase in the monthly contribution for State employee's health insurance for a total State match per budgeted employee of \$350 per month.

The Board's request includes a Base Level of \$52,311 each year of the 2007-09 biennium. In addition, they are requesting an increase above the Base Level of \$550 for Operating Expenses each year to cover postage, printing, mileage, meals and lodging, parking fees, and data processing supplies. An additional increase in Operating Expenses of \$2,400 for FY09 only is required for updating equipment (new computer and related hardware & software) in accordance with the Board's IT Plan.

The Executive Recommendation provides for the Agency Request.

## Appropriation

**Appropriation:** 851 Geologist-Cash in Treasury  
**Funding Sources:** NEG - Cash in Treasury

Commitment Item	Historical Data			Agency Request and Executive Recommendation			2008-2009		
	2005-2006 Actual	2006-2007 Budget	2006-2007 Authorized	2007-2008			Base Level	Agency	Executive
Regular Salaries 5010000	26,519	27,342	27,342	27,342	27,342	27,342	27,342	27,342	27,342
<b>#Positions</b>	<b>1</b>	<b>1</b>	<b>1</b>	<b>1</b>	<b>1</b>	<b>1</b>	<b>1</b>	<b>1</b>	<b>1</b>
Extra Help 5010001	0	3,000	3,000	3,000	3,000	3,000	3,000	3,000	3,000
<b>#Extra Help</b>	<b>0</b>	<b>1</b>	<b>1</b>	<b>1</b>	<b>1</b>	<b>1</b>	<b>1</b>	<b>1</b>	<b>1</b>
Personal Services Matching 5010003	9,187	9,591	9,212	9,969	9,969	9,969	9,969	9,969	9,969
Operating Expenses 5020002	10,065	10,300	10,300	10,300	10,850	10,850	10,300	13,250	13,250
Conference & Travel Expenses 5050009	1,650	1,700	1,700	1,700	1,700	1,700	1,700	1,700	1,700
Professional Fees 5060010	0	0	0	0	0	0	0	0	0
Data Processing 5090012	0	0	0	0	0	0	0	0	0
Capital Outlay 5120011	0	0	0	0	0	0	0	0	0
<b>Total</b>	<b>47,421</b>	<b>51,933</b>	<b>51,554</b>	<b>52,311</b>	<b>52,861</b>	<b>52,861</b>	<b>52,311</b>	<b>55,261</b>	<b>55,261</b>
<b>Funding Sources</b>									
Fund Balance 4000005	166,829	173,050		161,117	161,117	161,117	151,256	151,256	151,256
Cash Fund 4000045	53,642	40,000		42,450	43,000	43,000	40,050	43,000	43,000
<b>Total Funding</b>	<b>220,471</b>	<b>213,050</b>		<b>203,567</b>	<b>204,117</b>	<b>204,117</b>	<b>191,306</b>	<b>194,256</b>	<b>194,256</b>
Excess Appropriation/(Funding)	(173,050)	(161,117)		(151,256)	(151,256)	(151,256)	(138,995)	(138,995)	(138,995)
<b>Grand Total</b>	<b>47,421</b>	<b>51,933</b>		<b>52,311</b>	<b>52,861</b>	<b>52,861</b>	<b>52,311</b>	<b>55,261</b>	<b>55,261</b>

The FY07 Budgeted amount in Personal Services Matching exceeds the authorized amount due to matching rate adjustments during the 2005-2007 biennium.

## Change Level by Appropriation

**Appropriation:** 851-Geologist-Cash in Treasury

**Funding Sources:** NEG - Cash in Treasury

### Agency Request

Change Level		2007-2008	Pos	Cumulative	% of BL	2008-2009	Pos	Cumulative	% of BL
<b>BL</b>	<b>Base Level</b>	<b>52,311</b>	<b>1</b>	<b>52,311</b>	<b>100.0</b>	<b>52,311</b>	<b>1</b>	<b>52,311</b>	<b>100.0</b>
C01	Existing Program	550	0	52,861	101.0	550	0	52,861	101.0
C08	Technology	0	0	52,861	101.0	2,400	0	55,261	105.6

### Executive Recommendation

Change Level		2007-2008	Pos	Cumulative	% of BL	2008-2009	Pos	Cumulative	% of BL
<b>BL</b>	<b>Base Level</b>	<b>52,311</b>	<b>1</b>	<b>52,311</b>	<b>100.0</b>	<b>52,311</b>	<b>1</b>	<b>52,311</b>	<b>100.0</b>
C01	Existing Program	550	0	52,861	101.0	550	0	52,861	101.0
C08	Technology	0	0	52,861	101.0	2,400	0	55,261	105.6

### Justification

C01	Increase in both years of 2007-09 biennium (\$550.00) will be needed due to increases in telecommunications wired, network service, other materials & supplies, and association & membership dues.
C08	Increase in FY09 (\$2,400) is needed to replace computer in line with agency IT plan.