

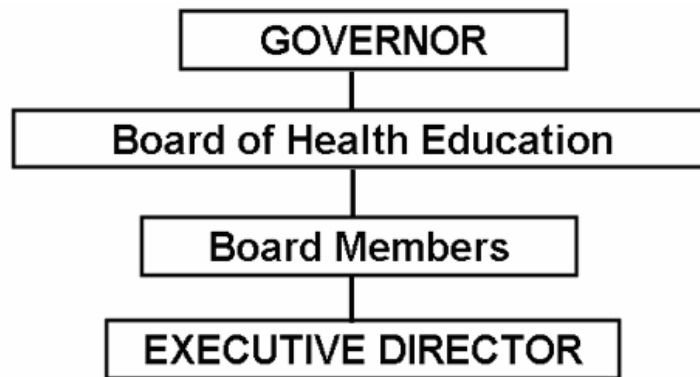
# ARKANSAS BOARD OF HEALTH EDUCATION

## Enabling Laws

Act 9 of 2005  
A.C.A. §17-53-101

## History and Organization

The State Board of Health Education, authorized by A.C.A. §17-53-101 et seq., certifies and regulates persons engaged in the practice of health education. The Board is comprised of seven members appointed by the Governor and confirmed by the Senate who serve three year terms. The Board is a Cash Agency funded from fees used for operating expenses.



## Agency Commentary

Agency request is Base Level for the 2007-09 biennium.

## Audit Findings

DIVISION OF LEGISLATIVE AUDIT  
AUDIT OF :  
ARKANSAS BOARD OF HEALTH EDUCATION  
FOR THE YEAR ENDED JUNE 30, 2005

### Findings

The Board did not issue prenumbered receipts or prepare a cash log for license registration and renewal fees collected totaling \$691 for the two-year period ended June 30, 2005, as required by the State Financial Management Guide (Section R4-19-4-501). Also, fees collected were not deposited in a timely manner and intact.

### Recommendations

Issue prenumbered receipts or prepare a cash log for fees collected and deposit all revenues collected in a timely manner and intact as required by State policy.

**Cash Fund Balance Description as of June 30, 2006**

Fund Account	Balance	Type	Location
3190000	\$5,292	Checking	Bank of America

Statutory/Other Restrictions on use:

A.C.A. §17-53-203 - Make expenditure for any purpose reasonable and necessary to carry out the provisions of this chapter.

Statutory Provisions for Fees, Fines, Penalties:

A.C.A. §17-53-105 - Violations shall be deemed a Class A misdemeanor

Revenue Receipts Cycle:

Receive fees throughout the year.

Fund Balance Utilization:

Pay expenses throughout the year as needed.

**Publications**

**A.C.A 25-1-204**

Name	Statutory Authorization	Required for		# Of Copies	Reason (s) for Continued Publication and Distribution
		Governor	General Assembly		
None	N/A	N	N	0	N/A

**Agency Position Usage Report**

FY2004-2005						FY2005-2006						FY2006-2007					
Authorized in Act	Budgeted			Unbudgeted	% of Authorized Unused	Authorized in Act	Budgeted			Unbudgeted	% of Authorized Unused	Authorized in Act	Budgeted			Unbudgeted	% of Authorized Unused
	Filled	Unfilled	Total	Total			Filled	Unfilled	Total	Total			Filled	Unfilled	Total	Total	
0	0	0	0	0	0.00%	0	0	0	0	0	0.00%	0	0	0	0	0	0.00%

## **Analysis of Budget Request**

**Appropriation:** B79 - Board of Health Education

**Funding Sources:** 319-Board of Health Education-Cash

The State Board of Health Education, authorized by A.C.A. §17-53-101 et seq., certifies and regulates persons engaged in the practice of health education. The Board is comprised of seven members appointed by the Governor and confirmed by the Senate who serve three year terms. The Board is a Cash agency funded from fees used for operating expenses.

The Board requests Base Level of \$5,592 each year of the 2007-09 biennium. This request will allow the Agency to pay anticipated operating expenses for the board during the next biennium.

The Executive Recommendation provides for Agency Request. Expenditure of appropriation is contingent upon available funding.

**Appropriation**

**Appropriation:** B79 Board of Health Education  
**Funding Sources:** 319-Board of Health Education-Cash

**Historical Data**

**Agency Request and Executive Recommendation**

Commitment Item	2005-2006	2006-2007	2006-2007	2007-2008			2008-2009		
	Actual	Budget	Authorized	Base Level	Agency	Executive	Base Level	Agency	Executive
Operating Expenses 5020002	427	5,592	6,000	5,592	5,592	5,592	5,592	5,592	5,592
Conference & Travel Expenses 5050009	0	0	0	0	0	0	0	0	0
Professional Fees 5060010	0	0	0	0	0	0	0	0	0
Data Processing 5090012	0	0	0	0	0	0	0	0	0
Capital Outlay 5120011	0	0	0	0	0	0	0	0	0
<b>Total</b>	<b>427</b>	<b>5,592</b>	<b>6,000</b>	<b>5,592</b>	<b>5,592</b>	<b>5,592</b>	<b>5,592</b>	<b>5,592</b>	<b>5,592</b>
<b>Funding Sources</b>									
Fund Balance 4000005	5,267	5,292		0	0	0	0	0	0
Cash Fund 4000045	452	300		300	300	300	300	300	300
<b>Total Funding</b>	<b>5,719</b>	<b>5,592</b>		<b>300</b>	<b>300</b>	<b>300</b>	<b>300</b>	<b>300</b>	<b>300</b>
Excess Appropriation/(Funding)	(5,292)	0		5,292	5,292	5,292	5,292	5,292	5,292
<b>Grand Total</b>	<b>427</b>	<b>5,592</b>		<b>5,592</b>	<b>5,592</b>	<b>5,592</b>	<b>5,592</b>	<b>5,592</b>	<b>5,592</b>