

# ARKANSAS STATE BOARD OF LANDSCAPE ARCHITECTS

## Enabling Laws

Act 31 of 2005

Act 353 of 1975, as amended. See A.C.A. 71-2902

## History and Organization

The Arkansas State Board of Landscape Architects (formerly Arkansas Advisory Committee for Registration of Landscape Architects) is responsible for the examination and registration/licensure of landscape architects in Arkansas, in accordance with Act 353 of 1975, as amended. The Board is composed of four landscape architects, one public member and the Program Director of the University of Arkansas School of Landscape Architecture.

### Mission

The Landscape Board was formed in 1975 with the goal of protecting the public's health, safety and welfare as it relates to the practice of Landscape Architecture.

### Statutory Responsibility

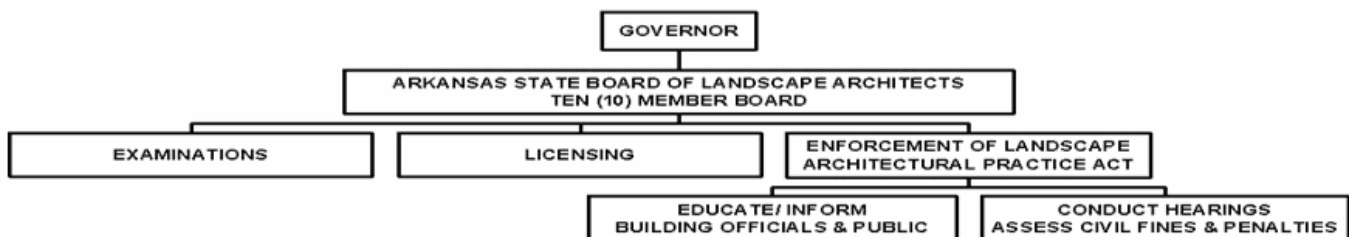
To certify, license and register individuals who met the requirements to practice landscape architecture in the State of Arkansas and to protect the public from illegal, incompetent, unethical and unprofessional practitioners.

### Primary Activities

The Arkansas State Board of Architects provides the staff support for carrying out the duties of the Arkansas State Board of Landscape Architects. Those duties include:

- To administer and grant certification to those who pass the Landscape Architectural Registration Examination (L.A.R.E.) and otherwise qualify;
- Determine whether those who apply for a reciprocal qualify;
- Annually register/license all individual landscape architects and issue annual licenses to practice;
- Investigate violations of the Landscape Architectural Practice Act and take disciplinary action where appropriate after conducting a hearing; and
- Monitor mandatory continuing education requirements.

No Oversight and/or Advisory Affiliation



## Agency Commentary

The Arkansas State Board of Landscape Architects certify, license and register individuals who meet requirements to practice landscape architecture and protect the public from illegal, incompetent, unethical and unprofessional practitioners. The operations of the Board are funded from the receipts of fees charged by the Agency, which include registration and renewal fees, fines and penalties.

The Landscape Board is requesting Base Level operations in the amount of \$33,409 each year, with an increase of \$1,000 each year in Operating Expense to cover a shortfall in travel reimbursements for Board members.

The Landscape Board funds one-half the salary for accounting/bookkeeper position of the Arkansas State Board of Architects through a special language provision. The appropriation level for this provision has not been updated in several biennia. The Board is requesting an increase of \$4,870 in each year of the biennium to adjust for current salary and matching rates for this position in the current biennium.

## Audit Findings

DIVISION OF LEGISLATIVE AUDIT  
AUDIT OF :  
ARKANSAS STATE BOARD OF LANDSCAPE ARCHITECTS  
FOR THE YEAR ENDED JUNE 30, 2005

Findings	Recommendations
None	None

## Cash Fund Balance Description as of June 30, 2006

Fund Account	Balance	Type	Location
3300000	\$140,233	Checking	Regions Bank

### Statutory/Other Restrictions on use:

A.C.A. §17-36-206(b)(1) A.C.A. §17-36-206(b)(1) - The Secretary-treasurer shall receive, disburse, and account for all income paid to or received by the board.

### Statutory Provisions for Fees, Fines, Penalties:

A.C.A. §17-36-206(b)(1) - The Secretary-treasurer shall receive, disburse, and account for all income paid to or received by the board.

### Revenue Receipts Cycle:

Fees, fines and penalties are collected throughout the year.

### Fund Balance Utilization:

The fees are used to carry out the functions of the Board.

**Publications**

**A.C.A 25-1-204**

Name	Statutory Authorization	Required for		# Of Copies	Reason (s) for Continued Publication and Distribution
		Governor	General Assembly		
None	N/A	N	N	0	N/A

**Agency Position Usage Report**

FY2004-2005						FY2005-2006						FY2006-2007					
Authorized in Act	Budgeted			Unbudgeted	% of Authorized Unused	Authorized in Act	Budgeted			Unbudgeted	% of Authorized Unused	Authorized in Act	Budgeted			Unbudgeted	% of Authorized Unused
	Filled	Unfilled	Total	Total			Filled	Unfilled	Total	Total			Filled	Unfilled	Total	Total	
0	0	0	0	0	0.00%	0	0	0	0	0	0.00%	0	0	0	0	0	0.00%

## **Analysis of Budget Request**

**Appropriation:** A34 - Cash Operations

**Funding Sources:** 330 - Landscape Architects - Cash

The Arkansas State Board of Landscape Architects is responsible for the examination and registration of landscape architects in Arkansas. The operations of the Board are funded with cash funds generated from the receipt of fees charged by the agency.

The Board's Change Level Requests totaling \$5,870 each year reflect the following changes:

Additional Operating Expense totaling \$1,000 each year to cover a shortfall for travel reimbursement expenses for Board members.

Additional Architects Board Reimbursement totaling \$4,870 each year to adjust for current salary and matching rates as required in the special language proportionate share salary provision in the Board's appropriation act for the Architects Board bookkeeper that has not been increased for several years.

The Executive Recommendation provides for the Agency Request.

**Appropriation**

**Appropriation:** A34 Cash Operations  
**Funding Sources:** 330 - Landscape Architects - Cash

**Historical Data**

**Agency Request and Executive Recommendation**

Commitment Item	2005-2006	2006-2007	2006-2007	2007-2008			2008-2009		
	Actual	Budget	Authorized	Base Level	Agency	Executive	Base Level	Agency	Executive
Operating Expenses 5020002	5,507	14,490	14,490	14,490	15,490	15,490	14,490	15,490	15,490
Conference & Travel Expenses 5050009	0	0	0	0	0	0	0	0	0
Professional Fees 5060010	0	0	0	0	0	0	0	0	0
Data Processing 5090012	0	0	0	0	0	0	0	0	0
Capital Outlay 5120011	0	0	0	0	0	0	0	0	0
Exams 5900046	1,549	7,348	7,348	7,348	7,348	7,348	7,348	7,348	7,348
Reimburse Board of Architects 5900047	14,146	14,571	14,571	14,571	19,441	19,441	14,571	19,441	19,441
<b>Total</b>	<b>21,202</b>	<b>36,409</b>	<b>36,409</b>	<b>36,409</b>	<b>42,279</b>	<b>42,279</b>	<b>36,409</b>	<b>42,279</b>	<b>42,279</b>
<b>Funding Sources</b>									
Fund Balance 4000005	119,944	140,176		140,592	140,592	140,592	140,951	135,081	135,081
Cash Fund 4000045	41,434	36,825		36,768	36,768	36,768	36,768	36,768	36,768
Total Funding	161,378	177,001		177,360	177,360	177,360	177,719	171,849	171,849
Excess Appropriation/(Funding)	(140,176)	(140,592)		(140,951)	(135,081)	(135,081)	(141,310)	(129,570)	(129,570)
<b>Grand Total</b>	<b>21,202</b>	<b>36,409</b>		<b>36,409</b>	<b>42,279</b>	<b>42,279</b>	<b>36,409</b>	<b>42,279</b>	<b>42,279</b>

## Change Level by Appropriation

**Appropriation:** A34-Cash Operations

**Funding Sources:** 330 - Landscape Architects - Cash

### Agency Request

Change Level		2007-2008	Pos	Cumulative	% of BL	2008-2009	Pos	Cumulative	% of BL
<b>BL</b>	<b>Base Level</b>	<b>36,409</b>	<b>0</b>	<b>36,409</b>	<b>100.0</b>	<b>36,409</b>	<b>0</b>	<b>36,409</b>	<b>100.0</b>
C01	Existing Program	5,870	0	42,279	116.1	5,870	0	42,279	116.1

### Executive Recommendation

Change Level		2007-2008	Pos	Cumulative	% of BL	2008-2009	Pos	Cumulative	% of BL
<b>BL</b>	<b>Base Level</b>	<b>36,409</b>	<b>0</b>	<b>36,409</b>	<b>100.0</b>	<b>36,409</b>	<b>0</b>	<b>36,409</b>	<b>100.0</b>
C01	Existing Program	5,870	0	42,279	116.1	5,870	0	42,279	116.1

### Justification

C01 The Landscape Board is requesting Base Level operations in the amount of \$36,409 each year, with an increase of \$1,000 each year in Operating Expense to cover a shortfall in travel reimbursements for Board members. Also, a special language provision requires the Board to provide 1/2 of the compensation for the Architects Board Bookkeeper. Since the appropriation amount for this provision has not been increased in several years, the Board is requesting an increase of \$4,870 each year to adjust for salary and matching rate increases over the years for this position during the current biennium.