

ARKANSAS PSYCHOLOGY BOARD

Enabling Laws

Act 17 of 2005
A.C.A. §17-97-101, et seq.

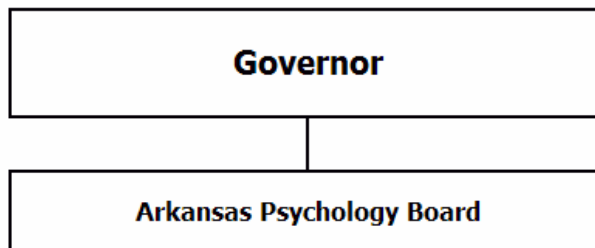
History and Organization

The Arkansas Board of Examiners in Psychology was created by Act 129 of 1955 to regulate the practice of Psychology. The original Act has been amended several times. Act 113 of 1977 added a Consumer Representative to the Board; Act 939 of 1979 added another professional to the Board specifying one member to be a Psychological Examiner; Act 131 of 1983 added a Senior Citizen Representative to the Board; Act 955 of 1995 replaced one academic Psychologist with an additional Psychological Examiner; Act 1482 of 2003 added another academic Psychologist and also renamed the Board The Arkansas Psychology Board; and most recently Act 1262 of 2005 added the registration of Psychological Technicians.

The Board is charged by law with regulating the practice of psychology within the State of Arkansas, including, but not limited to examining and passing upon the qualifications of applicants for the practice of psychology. The major responsibility of the State Board is to ensure the people of Arkansas are protected from misrepresentation, unethical practice, and/or incompetence in the practice of psychology. The Board performs two major functions. The first involves approving the credentials of applicants and then administering both written and oral examinations. The second primary function performed by the Board involves the investigation of possible ethical violations or allegations of incompetent or fraudulent practices.

The Board is charged by law with administering its duties consistent with the Act under which it was organized and authorized to regulate the practice of psychology consistent with the Administrative Procedures Act and in the interest of the public of the State of Arkansas.

The Board is now composed of nine individuals: Five Psychologists (doctoral level practitioners), two Psychological Examiners (master's level practitioners), one Consumer Representative, and one Senior Citizen Representative. All members receive reimbursement for actual expenses incurred, but no other remuneration. The Board employs two full time staff members who serve as the Board's Executive Director and Administrative Assistant.



Agency Commentary

The Arkansas Psychology Board's major responsibility is to insure that the people of the State are protected from misrepresentation, unethical practice, and/or incompetence in the practice of psychology. Funding for this appropriation consists of fees received from licensees and applicants throughout the year.

The Board is requesting a Change Level of \$4,705 each year of the 2007-2009 biennium. The request includes an increase in postage due to the increase in licensees, printing costs, and data processing contract fees.

Audit Findings

DIVISION OF LEGISLATIVE AUDIT
AUDIT OF :
ARKANSAS BOARD OF EXAMINERS IN PSYCHOLOGY
FOR THE YEAR ENDED JUNE 30, 2005

Findings	Recommendations
None	None

Employment Summary

	Male	Female	Total	%
White Employees	0	2	2	100 %
Black Employees	0	0	0	0 %
Other Racial Minorities	0	0	0	0 %
Total Minorities			0	0 %
Total Employees			2	100 %

Cash Fund Balance Description as of June 30, 2006

Fund Account	Balance	Type	Location
3230000	\$355,542	Investment and Checking	Treasury Money Mgmt. & Paying Acct. and US Bank

Statutory/Other Restrictions on use:

Board operations and processing license applications and renewals.

Statutory Provisions for Fees, Fines, Penalties:

ACA 17-97-101 et seq., fees for copying and services, license application, examination, and license renewal.

Revenue Receipts Cycle:

Most license and renewal receipts occur during May through July of each year.

Fund Balance Utilization:

For administrative expenses of board operations.

Publications

A.C.A 25-1-204

Name	Statutory Authorization	Required for		# Of Copies	Reason (s) for Continued Publication and Distribution
		Governor	General Assembly		
ABEP Directory	None	N	N	900	Required by the Rules & Reg's Sect. 1.3.E(2-6).
ABEP Newsletter	None	N	N	850	Required by the Rules & Reg's Sect. 1.3.F

Agency Position Usage Report

FY2004-2005						FY2005-2006						FY2006-2007					
Authorized in Act	Budgeted			Unbudgeted	% of Authorized Unused	Authorized in Act	Budgeted			Unbudgeted	% of Authorized Unused	Authorized in Act	Budgeted			Unbudgeted	% of Authorized Unused
	Filled	Unfilled	Total	Total			Total	Total	Total	Total			Total				
2	2	0	2	0	0.00%	2	2	0	2	0	0.00%	2	2	0	2	0	0.00%

Analysis of Budget Request

Appropriation: A31 - Cash Operations

Funding Sources: 323-Psychology Examiners-Cash

The Board is a cash agency funded from the fees collected primarily for application, testing and renewal. The Board is responsible for regulating the practice of psychology in the State of Arkansas by ensuring that Arkansans are protected from misrepresentation, unethical practices, and/or incompetence in the practice of psychology. This goal is accomplished by licensing psychologists and psychological examiners, registering psychological technicians, and investigating complaints.

A cost of living increase is not incorporated in Base Level pending the outcome of the Classification and Compensation Study. The Base Level request is \$69,621 for FY08 and FY09 for Regular Salaries. FY07 salary levels have been held flat each year for all incumbents. Personal Services Matching may reflect increases in the Base Level due to the Social Security Tax maximum income limit and certain increases in Worker's Compensation and Unemployment Tax rates. Personal Services Matching also includes a \$30 increase in the monthly contribution for State employee's health insurance for a total State match per budgeted employee of \$350 per month.

The Agency requests to reallocate among Operating Expense appropriation (\$1,014 from advertising and bank charges) and requests an additional \$3,500 in appropriation for increased postage and printing expenses due to a larger number of licensees and higher rent amounts. Also, the Agency requests an increase in Professional Fees appropriation of \$1,205 each year for increased data processing costs also due to the larger number of licensees.

The Executive Recommendation provides for Base Level with the reallocation of \$3,500 from Professional Fees to Operating Expenses each year.

Appropriation

Appropriation: A31 Cash Operations
Funding Sources: 323-Psychology Examiners-Cash

Historical Data

Agency Request and Executive Recommendation

Commitment Item		2005-2006	2006-2007	2006-2007	2007-2008			2008-2009		
		Actual	Budget	Authorized	Base Level	Agency	Executive	Base Level	Agency	Executive
Regular Salaries	5010000	67,926	69,621	69,621	69,621	69,621	69,621	69,621	69,621	69,621
#Positions		2	2	2	2	2	2	2	2	2
Personal Services Matching	5010003	21,367	21,767	20,769	22,498	22,498	22,498	22,498	22,498	22,498
Operating Expenses	5020002	59,805	59,258	59,258	59,258	62,758	62,758	59,258	62,758	62,758
Conference & Travel Expenses	5050009	3,354	4,000	4,000	4,000	4,000	4,000	4,000	4,000	4,000
Professional Fees	5060010	19,668	25,863	25,863	25,863	27,068	22,363	25,863	27,068	22,363
Data Processing	5090012	0	0	0	0	0	0	0	0	0
Capital Outlay	5120011	0	0	0	0	0	0	0	0	0
Total		172,120	180,509	179,511	181,240	185,945	181,240	181,240	185,945	181,240
Funding Sources										
Fund Balance	4000005	336,372	355,542		350,033	350,033	350,033	339,088	339,088	343,793
Cash Fund	4000045	191,290	175,000		170,295	175,000	175,000	170,295	175,000	175,000
Total Funding		527,662	530,542		520,328	525,033	525,033	509,383	514,088	518,793
Excess Appropriation/(Funding)		(355,542)	(350,033)		(339,088)	(339,088)	(343,793)	(328,143)	(328,143)	(337,553)
Grand Total		172,120	180,509		181,240	185,945	181,240	181,240	185,945	181,240

FY06 Actual Salary & Match exceeds authorized due to Salary Holding transfer for payment of Career Service; Operating Expense exceeds authorized due to authority of Budget Classification Transfer.

FY07 Budgeted Personal Services Matching exceeds authorized due to matching rate adjustments during the 2005-2007 biennium.

Change Level by Appropriation

Appropriation: A31-Cash Operations

Funding Sources: 323-Psychology Examiners-Cash

Agency Request

Change Level		2007-2008	Pos	Cumulative	% of BL	2008-2009	Pos	Cumulative	% of BL
BL	Base Level	181,240	2	181,240	100.0	181,240	2	181,240	100.0
C01	Existing Program	5,719	0	186,959	103.1	5,719	0	186,959	103.1
C03	Discontinue Program	(1,014)	0	185,945	102.6	(1,014)	0	185,945	102.6

Executive Recommendation

Change Level		2007-2008	Pos	Cumulative	% of BL	2008-2009	Pos	Cumulative	% of BL
BL	Base Level	181,240	2	181,240	100.0	181,240	2	181,240	100.0
C01	Existing Program	4,514	0	185,754	102.4	4,514	0	185,754	102.4
C03	Discontinue Program	(1,014)	0	184,740	101.9	(1,014)	0	184,740	101.9
C19	Executive Changes	(3,500)	0	181,240	100.0	(3,500)	0	181,240	100.0

Justification

C01	Agency requests an increase in Operating Expense appro. of \$3,500 for expected increases in postage and printing due to increasing licensees and for increased rent; and an increase of \$1,205 in Professional Fees for increased data processing costs.
C03	Agency requests a reallocation in Operating Expense appro. of \$1,014 due to expected decreases in advertising and bank charges to be used to increase appro. for postage, printing, and rent in the Operating Expense appropriation.
C19	Executive Recommendation provides for reallocation from Professional Fees to Operating Expenses.