

# ARKANSAS WHEAT PROMOTION BOARD

## Enabling Laws

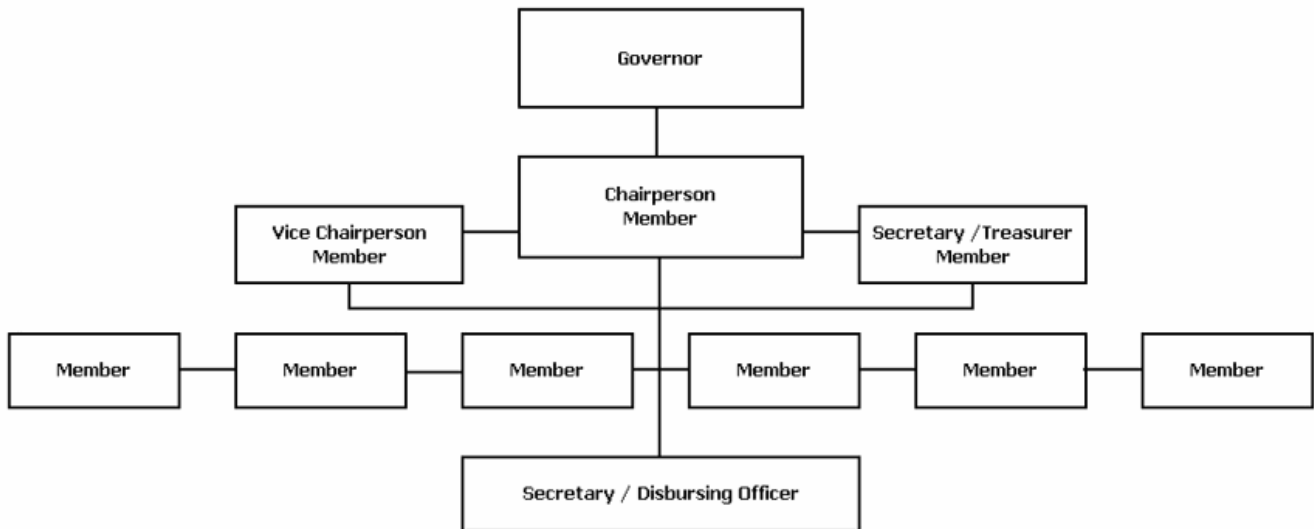
Act 36 of 2005  
A.C.A §2-20-604

## History and Organization

The Arkansas Wheat Promotion Board was created by Act 283 of 1985. The mission is to promote the growth and development of the wheat industry in Arkansas by research, extension, promotion and market development, thereby promoting the general welfare of the people of Arkansas.

The Board is made up of nine members appointed by the Governor. Three are nominated by and represent Arkansas Farm Bureau Federation, and two each are nominated by and represent Riceland Foods, Inc, The Agriculture Council of Arkansas, and the Arkansas Association of Wheat Growers. The Board is administered by the Executive Vice President of Arkansas Farm Bureau Federation or his designee.

The Board administers a one cent per bushel assessment on all wheat grown in Arkansas for market. The assessment is collected at the first point of sale by the Arkansas State Miscellaneous Tax Department. The funds enter the State Treasury, and are disbursed by the Board to fund wheat research and promotion efforts.



## Agency Commentary

The budget request of the Arkansas Wheat Promotion Board is Base Level for the 2007-2009 Biennium and will be funded entirely by special revenues collected from a one cent per bushel check off on all wheat produced in Arkansas.

An allocation of these special revenue funds will be used to fund wheat related research projects through the University of Arkansas and private research companies as the Board sees fit. Projects are individually approved and monitored by the Board. The Board welcomes project proposals at the first quarter meeting, usually held in August.

**Audit Findings**

DIVISION OF LEGISLATIVE AUDIT  
 AUDIT OF :  
 ARKANSAS WHEAT PROMOTION BOARD  
 FOR THE YEAR ENDED JUNE 30, 2004

Findings	Recommendations
None	None

**Publications**

**A.C.A 25-1-204**

Name	Statutory Authorization	Required for		# Of Copies	Reason (s) for Continued Publication and Distribution
		Governor	General Assembly		
None	N/A	N	N	0	N/A

**Agency Position Usage Report**

FY2004-2005						FY2005-2006						FY2006-2007					
Authorized in Act	Budgeted			Unbudgeted	% of Authorized Unused	Authorized in Act	Budgeted			Unbudgeted	% of Authorized Unused	Authorized in Act	Budgeted			Unbudgeted	% of Authorized Unused
	Filled	Unfilled	Total	Total			Filled	Unfilled	Total	Total			Filled	Unfilled	Total	Total	
0	0	0	0	0	0.00%	0	0	0	0	0	0.00%	0	0	0	0	0	0.00%

## **Analysis of Budget Request**

**Appropriation:** 999 - Arkansas Wheat Promotion

**Funding Sources:** SWP - Arkansas Wheat Promotion Fund

The purpose of the Arkansas Wheat Promotion Board is to promote the growth and development of the wheat industry in the State of Arkansas.

The Wheat Promotion Board is funded entirely by special revenue collected from a one cent per bushel assessment on all wheat grown in Arkansas. These funds are used to finance wheat research and promotion activities and operating expenses of the Board.

The Agency is requesting Base Level appropriation of \$791,871 each year of the 2007-2009 biennium.

The Executive Recommendation provides for the Agency Request.

**Appropriation**

**Appropriation:** 999 Arkansas Wheat Promotion  
**Funding Sources:** SWP - Arkansas Wheat Promotion Fund

**Historical Data**

**Agency Request and Executive Recommendation**

Commitment Item	2005-2006	2006-2007	2006-2007	2007-2008			2008-2009		
	Actual	Budget	Authorized	Base Level	Agency	Executive	Base Level	Agency	Executive
Operating Expenses 5020002	4,704	10,000	10,000	10,000	10,000	10,000	10,000	10,000	10,000
Conference & Travel Expenses 5050009	0	0	0	0	0	0	0	0	0
Professional Fees 5060010	0	0	0	0	0	0	0	0	0
Data Processing 5090012	0	0	0	0	0	0	0	0	0
Capital Outlay 5120011	0	0	0	0	0	0	0	0	0
Research/Development 5900031	109,936	781,871	781,871	781,871	781,871	781,871	781,871	781,871	781,871
<b>Total</b>	<b>114,640</b>	<b>791,871</b>	<b>791,871</b>	<b>791,871</b>	<b>791,871</b>	<b>791,871</b>	<b>791,871</b>	<b>791,871</b>	<b>791,871</b>
<b>Funding Sources</b>									
Fund Balance 4000005	56,783	26,803		26,803	26,803	26,803	26,803	26,803	26,803
Special Revenue 4000030	84,660	791,871		791,871	791,871	791,871	791,871	791,871	791,871
<b>Total Funding</b>	<b>141,443</b>	<b>818,674</b>		<b>818,674</b>	<b>818,674</b>	<b>818,674</b>	<b>818,674</b>	<b>818,674</b>	<b>818,674</b>
Excess Appropriation/(Funding)	(26,803)	(26,803)		(26,803)	(26,803)	(26,803)	(26,803)	(26,803)	(26,803)
<b>Grand Total</b>	<b>114,640</b>	<b>791,871</b>		<b>791,871</b>	<b>791,871</b>	<b>791,871</b>	<b>791,871</b>	<b>791,871</b>	<b>791,871</b>