

# DAH - DELTA CULTURAL CENTER

## **Enabling Laws**

Act 2019 of 2005.

A.C.A. § 13-5-701 et seq.

## **History and Organization**

### **Agency Mission Statement**

It is the mission of the Delta Cultural Center to preserve, research, document, interpret, and present the heritage of the Arkansas Delta. The Center is comprised of several facilities. The Visitors Center is located at 141 Cherry and is comprised of three connected buildings, two historic commercial buildings and one reconstructed structure. This facility houses staff offices, the museum gift shop, and major interpretive exhibits. The restored 1912 Union Pacific Railroad Depot houses interpretive exhibits. The Moore-Horner House was constructed in 1859 and is listed on the National Register; it is still a project under construction. The Moore-Horner House will be used as a historic house museum. The newly constructed Cherry Street Pavilion serves as a permanent stage and outdoor pavilion for agency events and community programs. The Beth El Heritage Hall, a former Jewish temple, provides an auditorium and classroom space for DCC programs and will provide additional collections storage space.

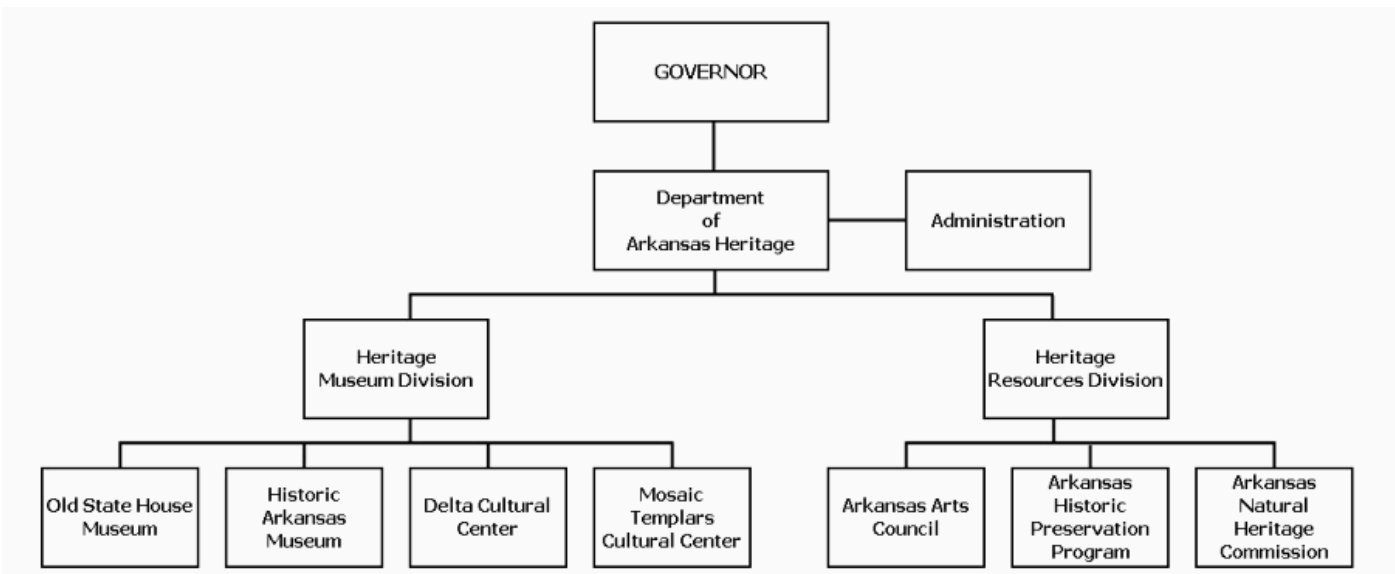
### **Brief Discussion of Statutory Responsibilities and Primary Activities**

The Delta Cultural Center was established in 1989 to serve as the heritage center for the 27 counties that comprise the Arkansas Delta region. The Center has been in operation since 1990 utilizing exhibits and educational programs to reach specified goals relating to the overall mission. The work of the Center is organized into major and minor projects. Major projects are expected to be carried out over several years and are designed to include components of educational programming, research, preservation, exhibits, collections, historic site management, marketing, development, and administration. Minor projects have a shorter life and a narrower focus and support or relate to the major projects the Center provides.

The Delta Cultural Center has developed a policy manual and five year long-range plan. This is a comprehensive plan for the Center's major projects defining functional areas such as educational programming, exhibits, collections, site management, publicity and marketing, and development. The manual also includes the goals and objectives of the Center dedicated to meet the overall mission and purpose.

### **Agency Board or Commission**

The Delta Cultural Center is advised by a 11 member advisory board appointed by the Governor which meets quarterly. The members shall serve for three-year terms. No member shall be eligible for appointment to more than two consecutive full terms. The advisory board positions are designated so that a broad range of interests are served: Helena community, blues musicians, historians, and Delta residents.



**Agency Commentary**

See Agency Commentary in DAH - Central Administration.

**Audit Findings**

DIVISION OF LEGISLATIVE AUDIT  
 AUDIT OF :  
 DEPARTMENT OF ARKANSAS HERITAGE – DELTA CULTURAL CENTER  
 FOR THE YEAR ENDED JUNE 30, 2004

Findings	Recommendations
None	None

**Employment Summary**

	Male	Female	Total	%
White Employees	3	3	6	67 %
Black Employees	1	2	3	33 %
Other Racial Minorities	0	0	0	0 %
Total Minorities			3	33 %
Total Employees			9	100 %

**Cash Fund Balance Description as of June 30, 2006**

Fund Account	Balance	Type	Location
1210100	\$29,518	Checking	1st Bank of the Delta

Statutory/Other Restrictions on use:

A.C.A. § 13-5-706 establishes that the agency can accept gifts of real or personal property and money. The agency shall have the authority to set fees related to services and programs.

Statutory Provisions for Fees, Fines, Penalties:

A.C.A. § 13-5-706 authorizes the agency to set fees.

Revenue Receipts Cycle:

Funds are collected on an irregular basis throughout the year. Deposits re made in a timely manner upon receipt of funds. Receipts are generated from gift shop sales, rentals, and/or donations.

Fund Balance Utilization:

The fund balance will be used to purchase additional inventory for resale through the museum store. The funds will be deposited to the State Treasury and expenditures made according to DFA regulations.

**Publications**

**A.C.A 25-1-204**

Name	Statutory Authorization	Required for		# Of Copies	Reason (s) for Continued Publication and Distribution
		Governor	General Assembly		
None	N/A	N	N	0	N/A

## Department Appropriation Summary

Historical Data						Agency Request and Executive Recommendation								
Appropriation	2005-2006		2006-2007		2006-2007		2007-2008				2008-2009			
	Actual	Pos	Budget	Pos	Authorized	Pos	Agency	Pos	Executive	Pos	Agency	Pos	Executive	Pos
2JF Delta Cultural Ctr-Cash in Treas	21,309	0	67,000	0	67,000	0	67,000	0	67,000	0	67,000	0	67,000	0
922 Delta Cultural Center-Operations	458,689	11	474,112	11	480,717	11	490,212	11	490,212	11	494,212	11	494,212	11
C14 Bank Charges Fund	1,843	0	2,700	0	1,650	0	2,700	0	2,700	0	2,700	0	2,700	0
<b>Total</b>	<b>481,841</b>	<b>11</b>	<b>543,812</b>	<b>11</b>	<b>549,367</b>	<b>11</b>	<b>559,912</b>	<b>11</b>	<b>559,912</b>	<b>11</b>	<b>563,912</b>	<b>11</b>	<b>563,912</b>	<b>11</b>

Funding Sources		%		%		%		%		%		%	
Fund Balance	4000005	25,894	5.1	26,923	4.9			3,469	0.6	3,469	0.6	3,469	0.6
General Revenue	4000010	434,035	85.3	472,537	86.3			490,212	87.0	490,212	87.0	494,212	87.6
Cash Fund	4000045	24,181	4.8	46,246	8.5			69,700	12.4	69,700	12.4	66,231	11.8
Merit Adjustment Fund	4000055	0	0.0	1,575	0.3			0	0.0	0	0.0	0	0.0
DFA Motor Vehicle Acquisition	4000184	24,654	4.8	0	0.0			0	0.0	0	0.0	0	0.0
<b>Total Funds</b>		<b>508,764</b>	<b>100.0</b>	<b>547,281</b>	<b>100.0</b>			<b>563,381</b>	<b>100.0</b>	<b>563,381</b>	<b>100.0</b>	<b>563,912</b>	<b>100.0</b>
Excess Appropriation/(Funding)		(26,923)		(3,469)				(3,469)		(3,469)		0	
<b>Grand Total</b>		<b>481,841</b>		<b>543,812</b>				<b>559,912</b>		<b>559,912</b>		<b>563,912</b>	

Actual and Budgeted exceed authorized in the Bank Charges Fund (C16) due to transfers from the Cash Fund Holding Account.

**Agency Position Usage Report**

FY2004-2005						FY2005-2006						FY2006-2007					
Authorized in Act	Budgeted			Unbudgeted	% of Authorized Unused	Authorized in Act	Budgeted			Unbudgeted	% of Authorized Unused	Authorized in Act	Budgeted			Unbudgeted	% of Authorized Unused
	Filled	Unfilled	Total	Total			Filled	Unfilled	Total	Total			Filled	Unfilled	Total	Total	
11	9	2	11	0	18.18%	11	9	2	11	0	18.18%	11	9	2	11	0	18.18%

## **Analysis of Budget Request**

**Appropriation:** 2JF - Delta Cultural Ctr-Cash in Treas

**Funding Sources:** NNH Delta Cultural Center Cash

Act 109 of 1989 (A.C.A. §13-5-703) established the Delta Cultural Center to provide a resource to study, preserve, interpret, and present the rich cultural heritage of a rural Mississippi River Delta community. This appropriation provides for personal services and operating expenses of the Delta Cultural Center. Funding is derived from cash funds generated at the Delta Cultural Center in Helena.

The Agency's Change Level request of \$2,000 each year in Resale is due to increased sales at the gift shop and bookstore.

The Executive Recommendation provides for the Agency Request.

## Appropriation Summary

**Appropriation:** 2JF Delta Cultural Ctr-Cash in Treas  
**Funding Sources:** NNH Delta Cultural Center Cash

### Historical Data

### Agency Request and Executive Recommendation

Commitment Item		Historical Data			Agency Request and Executive Recommendation			Agency Request and Executive Recommendation		
		2005-2006 Actual	2006-2007 Budget	2006-2007 Authorized	2007-2008			2008-2009		
					Base Level	Agency	Executive	Base Level	Agency	Executive
Operating Expenses	5020002	4,135	22,000	26,000	22,000	22,000	22,000	22,000	22,000	22,000
Conference & Travel Expenses	5050009	0	0	0	0	0	0	0	0	0
Professional Fees	5060010	0	25,000	23,000	25,000	25,000	25,000	25,000	25,000	25,000
Data Processing	5090012	0	0	0	0	0	0	0	0	0
Resale (COGS)	5090017	17,174	20,000	18,000	18,000	20,000	20,000	18,000	20,000	20,000
Capital Outlay	5120011	0	0	0	0	0	0	0	0	0
<b>Total</b>		<b>21,309</b>	<b>67,000</b>	<b>67,000</b>	<b>65,000</b>	<b>67,000</b>	<b>67,000</b>	<b>65,000</b>	<b>67,000</b>	<b>67,000</b>
<b>Funding Sources</b>										
Fund Balance	4000005	25,894	26,923		3,469	3,469	3,469	5,469	3,469	3,469
Cash Fund	4000045	22,338	43,546		67,000	67,000	67,000	63,531	63,531	63,531
<b>Total Funding</b>		<b>48,232</b>	<b>70,469</b>		<b>70,469</b>	<b>70,469</b>	<b>70,469</b>	<b>69,000</b>	<b>67,000</b>	<b>67,000</b>
Excess Appropriation/(Funding)		(26,923)	(3,469)		(5,469)	(3,469)	(3,469)	(4,000)	0	0
<b>Grand Total</b>		<b>21,309</b>	<b>67,000</b>		<b>65,000</b>	<b>67,000</b>	<b>67,000</b>	<b>65,000</b>	<b>67,000</b>	<b>67,000</b>

Budget exceeds Authorized Appropriation in Professional Fees by Authority of Budget Classification Transfer.

Budget exceeds Authorized Appropriation in Resale due to a transfer from the Cash Fund Holding Account.

## **Change Level by Appropriation**

**Appropriation:** 2JF-Delta Cultural Ctr-Cash in Treas

**Funding Sources:** NNH Delta Cultural Center Cash

### **Agency Request**

Change Level		2007-2008	Pos	Cumulative	% of BL	2008-2009	Pos	Cumulative	% of BL
<b>BL</b>	<b>Base Level</b>	65,000	0	65,000	100.0	65,000	0	65,000	100.0
C01	Existing Program	2,000	0	67,000	103.0	2,000	0	67,000	103.0

### **Executive Recommendation**

Change Level		2007-2008	Pos	Cumulative	% of BL	2008-2009	Pos	Cumulative	% of BL
<b>BL</b>	<b>Base Level</b>	65,000	0	65,000	100.0	65,000	0	65,000	100.0
C01	Existing Program	2,000	0	67,000	103.0	2,000	0	67,000	103.0

### **Justification**

C01	The request is to increase the appropriation for the Purchase for Resale line item. The museum has developed a successful gift shop and book store, and sales have increased resulting in the need for appropriation to purchase more inventory.
-----	--------------------------------------------------------------------------------------------------------------------------------------------------------------------------------------------------------------------------------------------------



## **Analysis of Budget Request**

**Appropriation:** 922 - Delta Cultural Center-Operations

**Funding Sources:** HRA Arkansas Heritage Fund

This appropriation provides general revenue funding for the Delta Cultural Center in Helena. The Center opened in November 1990 in the Old Missouri Pacific Railroad Depot. The Department utilizes this appropriation to provide staff for maintenance and general operations, as well as to provide routinely updated programming and exhibitory illustrating the historical, musical, and geographical significance of the 27 county Delta region.

The Agency's Change Level request totaling \$12,000 each year in Operating Expenses is to cover shortfalls due to a 20% overall increase in utilities for the Agency's seven enclosed structures.

The Executive Recommendation provides for the Agency Request for new general revenue above the Base Level of \$12,000 each year for utilities.

## Appropriation Summary

**Appropriation:** 922 Delta Cultural Center-Operations  
**Funding Sources:** HRA Arkansas Heritage Fund

### Historical Data

### Agency Request and Executive Recommendation

Commitment Item		Historical Data			Agency Request and Executive Recommendation			Agency Request and Executive Recommendation		
		2005-2006 Actual	2006-2007 Budget	2006-2007 Authorized	2007-2008			2008-2009		
					Base Level	Agency	Executive	Base Level	Agency	Executive
Regular Salaries	5010000	276,874	306,409	315,590	306,409	306,409	306,409	306,409	306,409	306,409
<b>#Positions</b>		<b>11</b>	<b>11</b>	<b>11</b>	<b>11</b>	<b>11</b>	<b>11</b>	<b>11</b>	<b>11</b>	<b>11</b>
Extra Help	5010001	2,038	2,550	2,550	2,550	2,550	2,550	2,550	2,550	2,550
<b>#Extra Help</b>		<b>1</b>	<b>3</b>	<b>3</b>	<b>3</b>	<b>3</b>	<b>3</b>	<b>3</b>	<b>3</b>	<b>3</b>
Personal Services Matching	5010003	94,464	104,347	101,771	108,447	108,447	108,447	108,447	108,447	108,447
Operating Expenses	5020002	60,659	60,806	60,806	60,806	72,806	72,806	60,806	76,806	76,806
Conference & Travel Expenses	5050009	0	0	0	0	0	0	0	0	0
Professional Fees	5060010	0	0	0	0	0	0	0	0	0
Data Processing	5090012	0	0	0	0	0	0	0	0	0
Capital Outlay	5120011	24,654	0	0	0	0	0	0	0	0
<b>Total</b>		<b>458,689</b>	<b>474,112</b>	<b>480,717</b>	<b>478,212</b>	<b>490,212</b>	<b>490,212</b>	<b>478,212</b>	<b>494,212</b>	<b>494,212</b>
<b>Funding Sources</b>										
General Revenue	4000010	434,035	472,537		478,212	490,212	490,212	478,212	494,212	494,212
Merit Adjustment Fund	4000055	0	1,575		0	0	0	0	0	0
DFA Motor Vehicle Acquisition	4000184	24,654	0		0	0	0	0	0	0
<b>Total Funding</b>		<b>458,689</b>	<b>474,112</b>		<b>478,212</b>	<b>490,212</b>	<b>490,212</b>	<b>478,212</b>	<b>494,212</b>	<b>494,212</b>
Excess Appropriation/(Funding)		0	0		0	0	0	0	0	0
<b>Grand Total</b>		<b>458,689</b>	<b>474,112</b>		<b>478,212</b>	<b>490,212</b>	<b>490,212</b>	<b>478,212</b>	<b>494,212</b>	<b>494,212</b>

The FY07 Budgeted amount in Personal Services Matching exceeds the authorized amount due to matching rate adjustments during the 2005-2007 biennium.

Actual exceeds Authorized Appropriation in Capital Outlay due to a transfer from the Motor Vehicle Acquisition Fund.

## **Change Level by Appropriation**

**Appropriation:** 922-Delta Cultural Center-Operations

**Funding Sources:** HRA Arkansas Heritage Fund

### **Agency Request**

Change Level		2007-2008	Pos	Cumulative	% of BL	2008-2009	Pos	Cumulative	% of BL
<b>BL</b>	<b>Base Level</b>	478,212	11	478,212	100.0	478,212	11	478,212	100.0
C01	Existing Program	12,000	0	490,212	102.5	16,000	0	494,212	103.3

### **Executive Recommendation**

Change Level		2007-2008	Pos	Cumulative	% of BL	2008-2009	Pos	Cumulative	% of BL
<b>BL</b>	<b>Base Level</b>	478,212	11	478,212	100.0	478,212	11	478,212	100.0
C01	Existing Program	12,000	0	490,212	102.5	16,000	0	494,212	103.3

### **Justification**

C01	This request is for appropriation and funding to cover basic utility costs. Over the past two years the DCC has seen a 20% increase in utilities. The DCC operates seven structures totaling 43,151 sq. ft. that occupy grounds totaling approximately five acres.
-----	--------------------------------------------------------------------------------------------------------------------------------------------------------------------------------------------------------------------------------------------------------------------

## **Analysis of Budget Request**

**Appropriation:** C14 - Bank Charges Fund

**Funding Sources:** 121 Delta Cultural Museum Bank Charges

This appropriation provides a private bank account, removed from the State Treasury, for the payment of Bank Charges, Credit Card Charges and Fees from revenues collected by the Delta Cultural Museum.

The Agency's Change Level request of \$1,050 each year in Operating Expenses is to cover the associated bank charges resulting from increased gift shop sales.

The Executive Recommendation provides for the Agency Request.

**Appropriation Summary**

**Appropriation:** C14 Bank Charges Fund  
**Funding Sources:** 121 Delta Cultural Museum Bank Charges

**Historical Data**

**Agency Request and Executive Recommendation**

Commitment Item	2005-2006	2006-2007	2006-2007	2007-2008			2008-2009		
	Actual	Budget	Authorized	Base Level	Agency	Executive	Base Level	Agency	Executive
Operating Expenses 5020002	1,843	2,700	1,650	1,650	2,700	2,700	1,650	2,700	2,700
Conference & Travel Expenses 5050009	0	0	0	0	0	0	0	0	0
Professional Fees 5060010	0	0	0	0	0	0	0	0	0
Data Processing 5090012	0	0	0	0	0	0	0	0	0
Capital Outlay 5120011	0	0	0	0	0	0	0	0	0
<b>Total</b>	<b>1,843</b>	<b>2,700</b>	<b>1,650</b>	<b>1,650</b>	<b>2,700</b>	<b>2,700</b>	<b>1,650</b>	<b>2,700</b>	<b>2,700</b>
<b>Funding Sources</b>									
Cash Fund 4000045	1,843	2,700		1,650	2,700	2,700	1,650	2,700	2,700
<b>Total Funding</b>	<b>1,843</b>	<b>2,700</b>		<b>1,650</b>	<b>2,700</b>	<b>2,700</b>	<b>1,650</b>	<b>2,700</b>	<b>2,700</b>
Excess Appropriation/(Funding)	0	0		0	0	0	0	0	0
<b>Grand Total</b>	<b>1,843</b>	<b>2,700</b>		<b>1,650</b>	<b>2,700</b>	<b>2,700</b>	<b>1,650</b>	<b>2,700</b>	<b>2,700</b>

Actual and Budget exceeds Authorized Appropriation in Operating Expense due to a transfer from the Cash Fund Holding Account.

## Change Level by Appropriation

**Appropriation:** C14-Bank Charges Fund

**Funding Sources:** 121 Delta Cultural Museum Bank Charges

### Agency Request

Change Level		2007-2008	Pos	Cumulative	% of BL	2008-2009	Pos	Cumulative	% of BL
<b>BL</b>	<b>Base Level</b>	1,650	0	1,650	100.0	1,650	0	1,650	100.0
C01	Existing Program	1,050	0	2,700	163.6	1,050	0	2,700	163.6

### Executive Recommendation

Change Level		2007-2008	Pos	Cumulative	% of BL	2008-2009	Pos	Cumulative	% of BL
<b>BL</b>	<b>Base Level</b>	1,650	0	1,650	100.0	1,650	0	1,650	100.0
C01	Existing Program	1,050	0	2,700	163.6	1,050	0	2,700	163.6

### Justification

C01	This account is to record sales tax and credit card charges. The increased appropriation is needed to provide adequate budget to record these expenditures.
-----	-------------------------------------------------------------------------------------------------------------------------------------------------------------