

# LAW ENFORCEMENT STANDARDS & TRAINING

## Enabling Laws

Act 1793 of 2005  
A.C.A. §12-9-101 et seq.

## History and Organization

As the dynamics of law enforcement continue to rapidly change, the Commission on Law Enforcement Standards and Training, recognizing its responsibility to the citizens of our State by maintaining and enforcing standards for employment, is committed to providing the law enforcement profession in the State of Arkansas with the very best training available, utilizing the latest in law enforcement instructional methods, techniques, and technology, emphasizing professional ethics and personal accountability.

The Arkansas Law Enforcement Training Academy was established by the 1963 Arkansas General Assembly with the passage of Act 526. No funds were appropriated for the operation of the Academy at that time. For the next two years, concerned and interested law enforcement administrators worked diligently towards establishing an academy which would provide training to law enforcement officers in the State.

In 1965, Act 514 provided the necessary appropriations for the operations of the Academy. In that year also, Act 172 amended the act which originally created the Academy and placed it under the supervision and the direction of a board composed of three members appointed by the Governor.

Land which was owned by the United States Government and utilized as the Shumaker Ordinance Plant was converted to private enterprise by Brown & Root of Houston, Texas. It was decided that a portion of this land would be donated to the State Department of Education with the understanding that 13.6 acres would be used for a law enforcement training academy. As a result, the Academy was provided with permanent facilities at East Camden. The original structure, which is a part of the current facility, was formerly utilized as Bachelor Officers Quarters at the Naval Depot. It was modified and converted to provide food, lodging and training to law enforcement officers of the State.

The International Paper Company donated to the Arkansas Law Enforcement Training Academy 56.9 acres adjoining the Arkansas Law Enforcement Training Academy property in 1971. On August 26, 1986, 2.21 acres were donated to the Academy by Highland Resources Incorporated, formerly known as HRI Resources, Inc. This increased the total acreage to 72.71 acres, more or less.

The State of Arkansas purchased 28.68 acres adjoining the Arkansas Law Enforcement Training Academy property in 1996, increasing the total acreage of the Arkansas Law Enforcement Training Academy to a total of approximately 101.39 acres. This additional acreage was purchased for the purpose of the construction and operation of a Driving Training Course at the Arkansas Law Enforcement Training Academy.

Class 68-A was the first class to be conducted in the East Camden facility. The three-week course was conducted January 28 - February 16 and was composed of thirty-four officers.

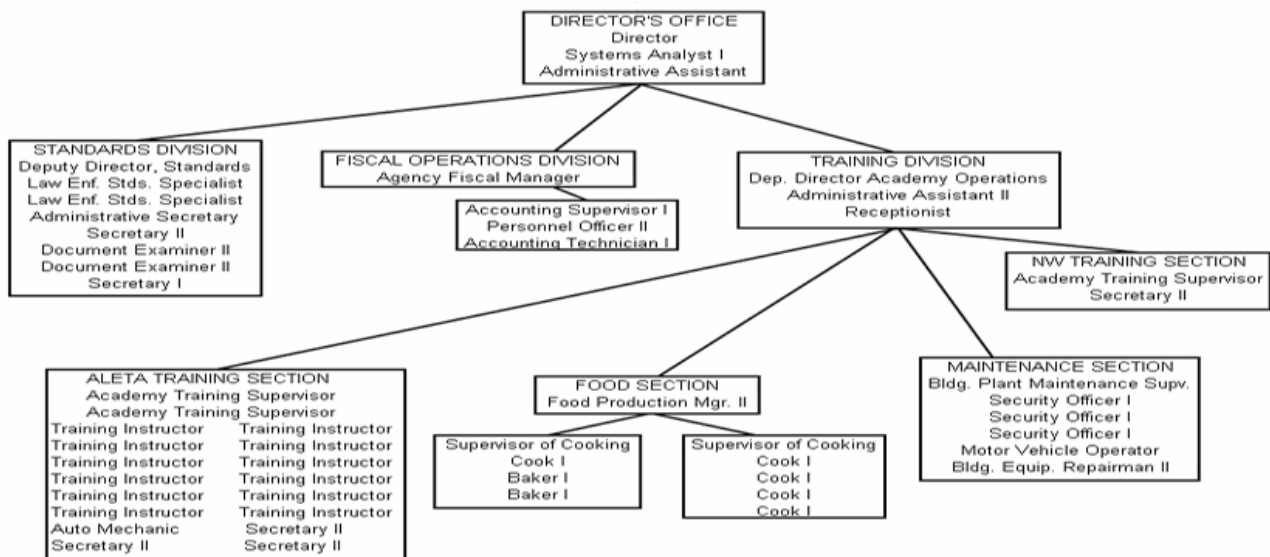
In the early 1970's it was realized the existing facilities were inadequate. Plans were made and approved for the construction of new facilities valued at 1.3 million dollars. This project was completed in March, 1976.

The Executive Commission on Law Enforcement Standards was created by House Bill 577 enacted by the Seventieth General Assembly, which was signed by Governor David Pryor on March 18, 1975 and became known as Act 452 of 1975, and later compiled as AR Statute Ann. 42-1001-1009, and presently Arkansas Code of 1987 Annotated 12-9-101 through 12-9-109.

The Act granted the Executive Commission the power to establish reasonable minimum standards for selection and training of law enforcement officers in Arkansas, to certify officers as being qualified by training and education, to examine and evaluate instructors and courses of instruction and certify the extent of qualifications respectively.

The Commission was composed of five members appointed by the Governor to five-year terms, which were staggered. Act 452 requires the Commission to meet formally at least four times a year, adopt rules and regulations to govern its operations, select one of its members as Chairman and is authorized to enter in contracts or do such things as may be necessary and incidental to the administration of the Act. The Minimum Standards became effective January 1, 1978.

Act 45 of 1981 abolished the Department of Public Safety and transferred the Arkansas Law Enforcement Training Academy from the agency to the newly created Arkansas Commission on Law Enforcement Standards and Training, consisting eventually and presently of nine members. The same act abolished the Executive Commission on Law Enforcement Standards and transferred that agency to the Arkansas Commission on Law Enforcement Standards and Training. The Act became effective July 1, 1981.



## Agency Commentary

Due to the need to complete current projects, accomplish the mission, and meet the statutory requirements set for the Commission on Law Enforcement Standards and Training, it is imperative that the State of Arkansas makes a commitment to the law enforcement community. Properly funding the ongoing projects and maintaining the physical plant at the East Camden facility will accomplish this commitment.

The increased Maintenance and Operation funds are essential in continuing our mission and statutory requirements of providing training and assistance to every city and county law enforcement agency as well as several state agencies. In a world continuing to evolve around the computer industry, law enforcement responsibilities in this area are ever increasing. Our Information Technology needs are extremely important to our operation and to the public throughout the State.

## Audit Findings

DIVISION OF LEGISLATIVE AUDIT

AUDIT OF :

ARKANSAS COMMISSION ON LAW ENFORCEMENT STANDARDS AND TRAINING

FOR THE YEAR ENDED JUNE 30, 2005

Findings

Recommendations

None

None

## Employment Summary

	Male	Female	Total	%
White Employees	25	27	52	100 %
Black Employees	0	0	0	0 %
Other Racial Minorities	0	0	0	0 %
	Total Minorities		0	0 %
	Total Employees		52	100 %

## Cash Fund Balance Description as of June 30, 2006

Fund Account	Balance	Type	Location
1080200	\$291,104	Checking	Farmers Bank and Trust, Camden

### Statutory/Other Restrictions on use:

A.C.A. §19-6-109(c) All nonrevenue receipts from the sale of property or income shall be credited to the fund from which the agency draws its support.

### Statutory Provisions for Fees, Fines, Penalties:

N/A

### Revenue Receipts Cycle:

Funds are deposited in bank account as received.

### Fund Balance Utilization:

Funds are being used for purchase of uniforms and food for students. Also to pay tuition to SAU Tech for a 28 credit hour program awarded to all students that complete basic police training at Arkansas Law Enforcement Training Academy at Camden or Springdale.

## Publications

### A.C.A 25-1-204

Name	Statutory Authorization	Required for		# Of Copies	Reason (s) for Continued Publication and Distribution
		Governor	General Assembly		
Annual Report	A.C.A. §12-9-101	N	N	120	As required by Arkansas Code

## Department Appropriation Summary

Historical Data						Agency Request and Executive Recommendation								
Appropriation	2005-2006		2006-2007		2006-2007		2007-2008				2008-2009			
	Actual	Pos	Budget	Pos	Authorized	Pos	Agency	Pos	Executive	Pos	Agency	Pos	Executive	Pos
172 Law Enforcement Standards-Oprs	2,829,194	54	2,798,578	54	2,822,434	54	3,035,168	54	2,909,634	54	3,002,634	54	2,898,134	54
2NH Drug Detection Training-Fed	0	0	46,273	0	46,273	0	46,273	0	46,273	0	46,273	0	46,273	0
D48 Special Training-Cash	236,175	0	400,000	0	400,000	0	400,000	0	400,000	0	400,000	0	400,000	0
<b>Total</b>	<b>3,065,369</b>	<b>54</b>	<b>3,244,851</b>	<b>54</b>	<b>3,268,707</b>	<b>54</b>	<b>3,481,441</b>	<b>54</b>	<b>3,355,907</b>	<b>54</b>	<b>3,448,907</b>	<b>54</b>	<b>3,344,407</b>	<b>54</b>

Funding Sources		%		%		%		%		%		%		
Fund Balance	4000005	246,484	7.3	288,243	8.5		163,243	4.6	163,243	4.7	88,243	2.5	88,243	2.6
General Revenue	4000010	2,814,799	83.9	2,798,578	82.1		3,035,168	85.0	2,909,634	84.5	3,002,634	86.7	2,898,134	86.3
Federal Revenue	4000020	0	0.0	46,273	1.4		46,273	1.3	46,273	1.3	46,273	1.3	46,273	1.4
Cash Fund	4000045	277,934	8.3	275,000	8.0		325,000	9.1	325,000	9.5	325,000	9.5	325,000	9.7
DFA Motor Vehicle Acquisition	4000184	14,185	0.4	0	0.0		0	0.0	0	0.0	0	0.0	0	0.0
M & R Sales	4000340	210	0.0	0	0.0		0	0.0	0	0.0	0	0.0	0	0.0
<b>Total Funds</b>		<b>3,353,612</b>	<b>100.0</b>	<b>3,408,094</b>	<b>100.0</b>		<b>3,569,684</b>	<b>100.0</b>	<b>3,444,150</b>	<b>100.0</b>	<b>3,462,150</b>	<b>100.0</b>	<b>3,357,650</b>	<b>100.0</b>
Excess Appropriation/(Funding)		(288,243)		(163,243)			(88,243)		(88,243)		(13,243)		(13,243)	
<b>Grand Total</b>		<b>3,065,369</b>		<b>3,244,851</b>			<b>3,481,441</b>		<b>3,355,907</b>		<b>3,448,907</b>		<b>3,344,407</b>	

FY06 Actual amount in Law Enforcement Standards-Oprs exceeds the FY07 Budgeted amount as well as the Authorized amount due to the Agency being authorized and having expenditures in the Capital Outlay line item of this appropriation (172).

**Agency Position Usage Report**

FY2004-2005						FY2005-2006						FY2006-2007					
Authorized in Act	Budgeted			Unbudgeted	% of Authorized Unused	Authorized in Act	Budgeted			Unbudgeted	% of Authorized Unused	Authorized in Act	Budgeted			Unbudgeted	% of Authorized Unused
	Filled	Unfilled	Total	Total			Filled	Unfilled	Total	Total			Filled	Unfilled	Total	Total	
54	53	1	54	0	1.85%	54	52	2	54	0	3.70%	54	52	2	54	0	3.70%

## **Analysis of Budget Request**

**Appropriation:** 172 - Law Enforcement Standards-Oprs

**Funding Sources:** HUA - Miscellaneous Agencies Fund

This General Revenue appropriation provides for the operations of the Commission on Law Enforcement Standards and Training (CLEST). CLEST provides basic training for new officers and specialized training for certified police officers at the Arkansas Law Enforcement Training Academy (ALETA) near East Camden and in Springdale, while providing field-training classes as requested around the State. CLEST and ALETA's fgoal is to establish the role of the law enforcement officer as a profession, thereby presenting the citizens of the State of Arkansas with officers who have the knowledge and skill to detect, prevent and reduce crime.

A cost of living increase is not incorporated in Base Level pending the outcome of the Classification and Compensation Study. FY07 salary levels have been held flat each year for all incumbents. Personal Services Matching may reflect increases in the Base Level due to certain increases in Worker's Compensation and Unemployment Tax rates. Personal Services Matching also includes a \$30 increase in the monthly contribution for State employee's health insurance for a total State match per budgeted employee of \$350 per month.

In addition to the Base Level, Change Level requests totaling \$209,534 in FY08 and \$177,000 in FY09 are to address Maintenance and Operation needs of the agency to meet the continued demands of training increased numbers of law enforcement officials. Requested are increases in Buildings and Grounds Maintenance, Utilities, Rent, Supplies and Food Purchases. Also included are requests for information technology needs through the Office of Information Technology and equipment replacement.

The Executive Recommendation provides \$54,000 in Operating Expenses in FY08 and \$60,000 in FY09 with no increase in the requested Professional Fees for information technology as those services could be provided by the agency working directly with the Arkansas Crime Information Center. Capital Outlay appropriation for equipment is recommended at \$30,000 in FY08 and the requested \$12,500 in FY09. The Executive Recommendation is funded with state general revenue.

## Appropriation Summary

**Appropriation:** 172 Law Enforcement Standards-Oprs  
**Funding Sources:** HUA - Miscellaneous Agencies Fund

### Historical Data

### Agency Request and Executive Recommendation

Commitment Item		2005-2006	2006-2007	2006-2007	2007-2008			2008-2009		
		Actual	Budget	Authorized	Base Level	Agency	Executive	Base Level	Agency	Executive
Regular Salaries	5010000	1,499,659	1,515,784	1,548,028	1,515,784	1,515,784	1,515,784	1,515,784	1,515,784	1,515,784
<b>#Positions</b>		<b>54</b>	<b>54</b>	<b>54</b>	<b>54</b>	<b>54</b>	<b>54</b>	<b>54</b>	<b>54</b>	<b>54</b>
Personal Services Matching	5010003	484,761	507,908	499,520	534,964	534,964	534,964	534,964	534,964	534,964
Overtime	5010006	0	6,000	6,000	6,000	6,000	6,000	6,000	6,000	6,000
Operating Expenses	5020002	737,997	756,746	756,746	756,746	857,780	810,746	756,746	855,246	816,746
Conference & Travel Expenses	5050009	512	5,000	5,000	5,000	5,000	5,000	5,000	5,000	5,000
Professional Fees	5060010	3,675	7,140	7,140	7,140	73,140	7,140	7,140	73,140	7,140
Data Processing	5090012	0	0	0	0	0	0	0	0	0
Capital Outlay	5120011	102,590	0	0	0	42,500	30,000	0	12,500	12,500
<b>Total</b>		<b>2,829,194</b>	<b>2,798,578</b>	<b>2,822,434</b>	<b>2,825,634</b>	<b>3,035,168</b>	<b>2,909,634</b>	<b>2,825,634</b>	<b>3,002,634</b>	<b>2,898,134</b>

Funding Sources										
General Revenue	4000010	2,814,799	2,798,578		2,825,634	3,035,168	2,909,634	2,825,634	3,002,634	2,898,134
DFA Motor Vehicle Acquisition	4000184	14,185	0		0	0	0	0	0	0
M & R Sales	4000340	210	0		0	0	0	0	0	0
<b>Total Funding</b>		<b>2,829,194</b>	<b>2,798,578</b>		<b>2,825,634</b>	<b>3,035,168</b>	<b>2,909,634</b>	<b>2,825,634</b>	<b>3,002,634</b>	<b>2,898,134</b>
Excess Appropriation/(Funding)		0	0		0	0	0	0	0	0
<b>Grand Total</b>		<b>2,829,194</b>	<b>2,798,578</b>		<b>2,825,634</b>	<b>3,035,168</b>	<b>2,909,634</b>	<b>2,825,634</b>	<b>3,002,634</b>	<b>2,898,134</b>

FY06 Actual amount in Capital Outlay exceeds the Authorized amount due to the agency not being authorized Capital Outlay in FY07. Fy07 Budgeted amount in Personal Services Matching exceeds the Authorized amount due to increases in the retirement rate.



## Change Level by Appropriation

**Appropriation:** 172-Law Enforcement Standards-Oprs

**Funding Sources:** HUA - Miscellaneous Agencies Fund

### Agency Request

Change Level		2007-2008	Pos	Cumulative	% of BL	2008-2009	Pos	Cumulative	% of BL
<b>BL</b>	<b>Base Level</b>	<b>2,825,634</b>	<b>54</b>	<b>2,825,634</b>	<b>100.0</b>	<b>2,825,634</b>	<b>54</b>	<b>2,825,634</b>	<b>100.0</b>
C01	Existing Program	111,500	0	2,937,134	103.9	111,500	0	2,937,134	103.9
C08	Technology	98,034	0	3,035,168	107.4	65,500	0	3,002,634	106.2

### Executive Recommendation

Change Level		2007-2008	Pos	Cumulative	% of BL	2008-2009	Pos	Cumulative	% of BL
<b>BL</b>	<b>Base Level</b>	<b>2,825,634</b>	<b>54</b>	<b>2,825,634</b>	<b>100.0</b>	<b>2,825,634</b>	<b>54</b>	<b>2,825,634</b>	<b>100.0</b>
C01	Existing Program	66,500	0	2,892,134	102.3	72,500	0	2,898,134	102.5
C08	Technology	17,500	0	2,909,634	102.9	0	0	2,898,134	102.5

### Justification

C01	Due to increase costs for fuel, ammunition, food, utilities, rent of office space, and cost to maintain driver training vehicles, \$98,000 is needed for each year of the biennium in Operating Expenses. Change Level of \$1,000 is needed for de-certification hearings to cover cost of hearing officials, transcription fees and for professional services rendered for each year of the biennium in Professional Fees. Change Level of \$12,500 is needed for replacement of Capital Equipment and payment of sales tax on new vehicles for each year of the biennium.
C08	Change Level in Operating Expenses of \$3,034 is requested for data processing supplies and replacement of 2 printers in the first year and \$500 for data processing supplies in the second year of the biennium. Change Level of \$65,000 in Professional Fees is requested each year to help collect and distribute data from the database. Office of Information Technology will design a database program that will replace the existing database at ALETA – Arkansas Law Enforcement Training Academy and ACIC – Arkansas Crime Information Center, providing faster access and capability to share information between agencies. Change Level of \$30,000 in Capital Outlay is needed for the first year of the biennium for a projector (\$10,000) and an audio visual system (\$20,000).

## **Analysis of Budget Request**

**Appropriation:** 2NH - Drug Detection Training-Fed

**Funding Sources:** FES - Law Enforcement Standards and Training

The Commission on Law Enforcement Standards and Training provides street level and advanced training to police officers/investigators in the field of drug investigation. Federal Grant funds are received from the United States Department of Justice for this program and are administered by the Department of Finance and Administration - Office of Intergovernmental Services.

The Agency Request is for a Base Level of operations.

The Executive Recommendation provides for the Agency Request.

**Appropriation Summary**

**Appropriation:** 2NH Drug Detection Training-Fed  
**Funding Sources:** FES - Law Enforcement Standards and Training

**Historical Data**

**Agency Request and Executive Recommendation**

Commitment Item	2005-2006	2006-2007	2006-2007	2007-2008			2008-2009		
	Actual	Budget	Authorized	Base Level	Agency	Executive	Base Level	Agency	Executive
Operating Expenses 5020002	0	45,773	45,773	45,773	45,773	45,773	45,773	45,773	45,773
Conference & Travel Expenses 5050009	0	500	500	500	500	500	500	500	500
Professional Fees 5060010	0	0	0	0	0	0	0	0	0
Data Processing 5090012	0	0	0	0	0	0	0	0	0
Capital Outlay 5120011	0	0	0	0	0	0	0	0	0
<b>Total</b>	<b>0</b>	<b>46,273</b>	<b>46,273</b>	<b>46,273</b>	<b>46,273</b>	<b>46,273</b>	<b>46,273</b>	<b>46,273</b>	<b>46,273</b>
<b>Funding Sources</b>									
Federal Revenue 4000020	0	46,273		46,273	46,273	46,273	46,273	46,273	46,273
Total Funding	0	46,273		46,273	46,273	46,273	46,273	46,273	46,273
Excess Appropriation/(Funding)	0	0		0	0	0	0	0	0
<b>Grand Total</b>	<b>0</b>	<b>46,273</b>		<b>46,273</b>	<b>46,273</b>	<b>46,273</b>	<b>46,273</b>	<b>46,273</b>	<b>46,273</b>

## **Analysis of Budget Request**

**Appropriation:** D48 - Special Training-Cash

**Funding Sources:** 108 - Law Enforcement Standards and Training - Cash

The Commission on Law Enforcement Standards and Training uses this case appropriation for Operating Expenses and Capital Outlay associated with Special Training. Fees are collected from state agencies for the use of the Training Academy's facilities for special training of their police officers and for meals purchased by the Fire Training Academy for students enrolled in training. The Commission uses this appropriation to buy uniforms up to \$40,000, purchase equipment and supplies, and for facility maintenance.

Change Level request is to restore the Capital Outlay authorization for both years for replacement of equipment.

The Executive Recommendation provides for the Agency Request. Expenditure of appropriation is contingent upon available funding.

## Appropriation Summary

**Appropriation:** D48 Special Training-Cash  
**Funding Sources:** 108 - Law Enforcement Standards and Training - Cash

### Historical Data

### Agency Request and Executive Recommendation

Commitment Item	2005-2006	2006-2007	2006-2007	2007-2008			2008-2009		
	Actual	Budget	Authorized	Base Level	Agency	Executive	Base Level	Agency	Executive
Operating Expenses 5020002	236,175	368,675	368,675	368,675	368,675	368,675	368,675	368,675	368,675
Conference & Travel Expenses 5050009	0	0	0	0	0	0	0	0	0
Professional Fees 5060010	0	0	0	0	0	0	0	0	0
Data Processing 5090012	0	0	0	0	0	0	0	0	0
Capital Outlay 5120011	0	31,325	31,325	0	31,325	31,325	0	31,325	31,325
<b>Total</b>	<b>236,175</b>	<b>400,000</b>	<b>400,000</b>	<b>368,675</b>	<b>400,000</b>	<b>400,000</b>	<b>368,675</b>	<b>400,000</b>	<b>400,000</b>
<b>Funding Sources</b>									
Fund Balance 4000005	246,484	288,243		163,243	163,243	163,243	119,568	88,243	88,243
Cash Fund 4000045	277,934	275,000		325,000	325,000	325,000	325,000	325,000	325,000
<b>Total Funding</b>	<b>524,418</b>	<b>563,243</b>		<b>488,243</b>	<b>488,243</b>	<b>488,243</b>	<b>444,568</b>	<b>413,243</b>	<b>413,243</b>
Excess Appropriation/(Funding)	(288,243)	(163,243)		(119,568)	(88,243)	(88,243)	(75,893)	(13,243)	(13,243)
<b>Grand Total</b>	<b>236,175</b>	<b>400,000</b>		<b>368,675</b>	<b>400,000</b>	<b>400,000</b>	<b>368,675</b>	<b>400,000</b>	<b>400,000</b>

## **Change Level by Appropriation**

**Appropriation:** D48-Special Training-Cash

**Funding Sources:** 108 - Law Enforcement Standards and Training - Cash

### **Agency Request**

Change Level		2007-2008	Pos	Cumulative	% of BL	2008-2009	Pos	Cumulative	% of BL
<b>BL</b>	<b>Base Level</b>	368,675	0	368,675	100.0	368,675	0	368,675	100.0
C01	Existing Program	31,325	0	400,000	108.5	31,325	0	400,000	108.5

### **Executive Recommendation**

Change Level		2007-2008	Pos	Cumulative	% of BL	2008-2009	Pos	Cumulative	% of BL
<b>BL</b>	<b>Base Level</b>	368,675	0	368,675	100.0	368,675	0	368,675	100.0
C01	Existing Program	31,325	0	400,000	108.5	31,325	0	400,000	108.5

### **Justification**

C01	Agency is requesting \$31,325 in Capital Outlay each year of the biennium to use in replacing equipment that is outdated and not cost efficient to repair.
-----	--