

RIVERSIDE VOCATIONAL TECHNICAL SCHOOL

Enabling Laws

Act 1389 of 2005

Act 496 of 2005

A.C.A. §§ 12-29-306--12-29-310

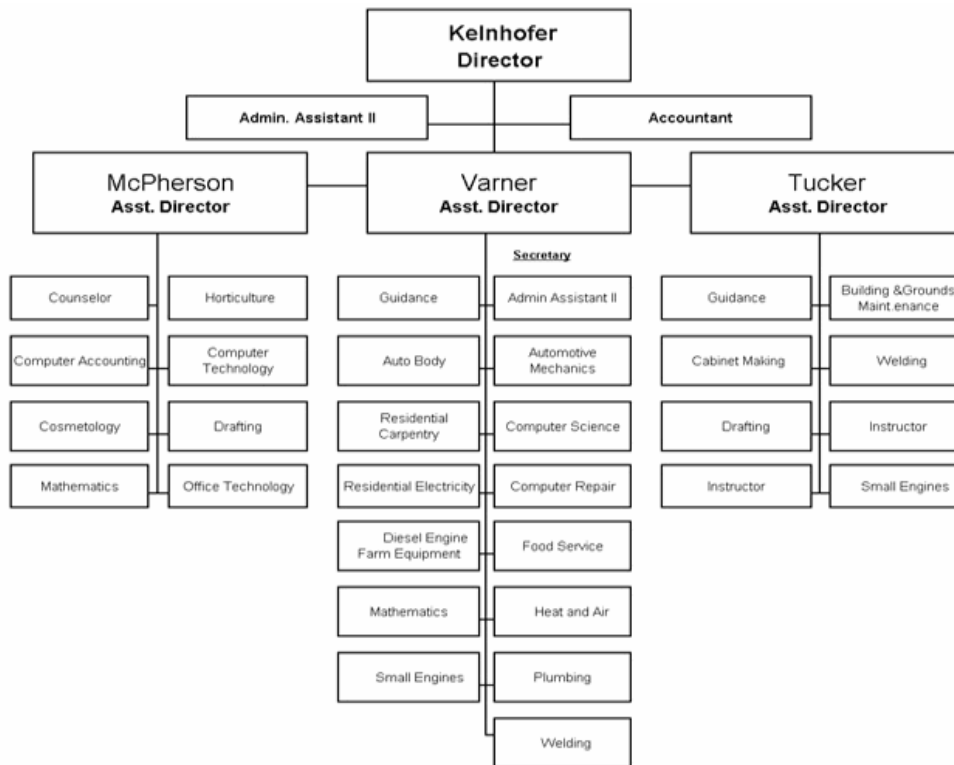
History and Organization

Vocational Education Programs began at the Tucker Unit, Arkansas Department of Correction in May, 1970 and at the Cummins Unit in August, 1970. Buildings were constructed utilizing funds from the Law Enforcement Assistance Administration. Funding for staff, equipment and supplies was provided by the Manpower Development Training Act. These funds were later supplanted by the Comprehensive Employment Training Act. The guidelines established by Congress for participation in the Job Training Partnership Act ended federal funding on October 1, 1984.

In 1985, Act 288 of the legislature (A.C.A. § 12-29-306) created Riverside Vocational Technical School effective July 1, 1985. Funding from October 1, 1984 to July 1, 1985 was provided on an interim basis by the Vocational Education Division, the Arkansas Department of Correction and the Employment Security Division.

Through legislative action, Act 496 of 2005 was passed placing Riverside Vocational Technical School and the Arkansas Department of Correction School District under the same umbrella, resulting in what is now known as the Arkansas Department of Correction School System.

Riverside Vocational Technical School is regulated by the State Board of Workforce Education and Career Opportunities and is governed by the Board of Corrections. Riverside Vocational Technical School is responsible for all Vocational Education Programs provided within the Arkansas Department of Correction.



Agency Commentary

The mission of Riverside Vocational Technical School is to provide quality vocational training to all qualified inmates incarcerated within the Arkansas Department of Correction. Successful completion of any program will allow the inmate to re-enter society with a marketable skill upon release from prison.

Studies have shown that inmates that participate in Vocational Technical programs have a lower recidivism rate than those who do not. Those who receive a G.E.D. and complete a technical program have a lower recidivism rate than those who receive a G.E.D. or Vocational Technical certificate only.

Programs at the Arkansas Department of Corrections are 1440 contact hours in length and enrollment is on a voluntary basis. Currently, 12 programs are offered at the Varner Unit, 5 programs at the Tucker Unit, 3 Co-Op programs at the Wrightsville Unit, 5 programs at the McPherson Unit for female offenders at Newport and 1 program at the Grimes Unit at Newport. Related studies programs are available at Tucker and Varner. Short term or part-time programs are available at the Little Rock and Pine Bluff facilities of the Department of Community Corrections.

For the 2007-09 biennium, Riverside Voc-Tech School requests a Change Level increase in appropriation and funding for Operating Expenses in the amount of \$12,000 each year in the State Operations appropriation. This increase is requested to accommodate the costs of a building lease due to the fact that Riverside Voc-Tech is now leasing office space from the Arkansas Department of Corrections School System pursuant to the provisions of Act 496 of 2005.

For the federally funded Workplace Transition appropriation, which is currently authorized through a

Miscellaneous Federal Grant, the Agency requests Base Level, which includes salary and matching costs for a currently authorized state position, and increases of \$15,000 each year for Operating Expenses and \$200,000 each year for Grants & Aid. This program offers post-secondary training to incarcerated youthful offenders of the Department of Correction. These Change Level increases are requested in order to provide adequate resources for the growing number of grants awarded to participants and to supplement the rising cost of post-secondary college tuition, textbooks and materials.

Audit Findings

DIVISION OF LEGISLATIVE AUDIT
AUDIT OF :
RIVERSIDE VOCATIONAL TECHNICAL SCHOOL
FOR THE YEAR ENDED JUNE 30, 2005

Findings	Recommendations
None	None

Employment Summary

	Male	Female	Total	%
White Employees	22	8	30	86 %
Black Employees	4	1	5	14 %
Other Racial Minorities	0	0	0	0 %
Total Minorities			5	14%
Total Employees			35	100 %

Publications

A.C.A 25-1-204

Name	Statutory Authorization	Required for		# Of Copies	Reason (s) for Continued Publication and Distribution
		Governor	General Assembly		
N/A	N/A	N	N	0	N/A

Department Appropriation Summary

Appropriation	Historical Data						Agency Request and Executive Recommendation							
	2005-2006		2006-2007		2006-2007		2007-2008				2008-2009			
	Actual	Pos	Budget	Pos	Authorized	Pos	Agency	Pos	Executive	Pos	Agency	Pos	Executive	Pos
4GY Workplace Trng	0	0	205,697	1	0	0	250,871	1	250,871	1	250,871	1	250,871	1
732 Riverside VT-State Operations	1,893,608	35	2,006,909	36	2,719,361	37	2,031,651	36	2,031,651	36	2,031,651	36	2,031,651	36
750 Plumbing Apprenticeship Program	61,856	1	62,477	1	73,156	1	62,813	1	62,813	1	62,813	1	62,813	1
Total	1,955,464	36	2,275,083	38	2,792,517	38	2,345,335	38	2,345,335	38	2,345,335	38	2,345,335	38

Funding Sources		%		%		%		%		%		%	
General Revenue 4000010	1,955,464	100.0	2,069,386	91.0		2,094,464	89.3	2,082,464	89.2	2,094,464	89.3	2,082,464	89.2
Federal Revenue 4000020	0	0.0	205,697	9.0		250,871	10.7	250,871	10.8	250,871	10.7	250,871	10.8
Total Funds	1,955,464	100.0	2,275,083	100.0		2,345,335	100.0	2,333,335	100.0	2,345,335	100.0	2,333,335	100.0
Excess Appropriation/(Funding)	0		0			0		12,000		0		12,000	
Grand Total	1,955,464		2,275,083			2,345,335		2,345,335		2,345,335		2,345,335	

The Workplace Training appropriation (4GY) is established through the authority of the Miscellaneous Federal Grant Holding Account for FY07. Base Levels for salary & associated matching costs are reflected for one (1) position due to the fact that the agency utilizes a currently authorized faculty position to coordinate the program.

Agency Position Usage Report

FY2004-2005						FY2005-2006						FY2006-2007					
Authorized in Act	Budgeted			Unbudgeted	% of Authorized Unused	Authorized in Act	Budgeted			Unbudgeted	% of Authorized Unused	Authorized in Act	Budgeted			Unbudgeted	% of Authorized Unused
	Filled	Unfilled	Total	Total			Filled	Unfilled	Total	Total			Filled	Unfilled	Total	Total	
38	35	1	36	2	7.89%	38	36	1	37	1	5.26%	38	35	3	38	0	7.89%

Analysis of Budget Request

Appropriation: 4GY - Workplace Trng
Funding Sources: FTR - Riverside Voc Tech School - Federal

Riverside Vocational Technical School administers through authority of the Miscellaneous Federal Grant procedures a federally funded program entitled Workplace & Community Transition Training. Funding is provided through the U.S. Department of Education. The program offers vocational training to incarcerated youth offenders of the Department of Community Correction through working partnerships with applicable institutions of higher education.

A cost of living increase is not incorporated in Base Level pending the outcome of the Classification and Compensation Study. FY07 salary levels have been held flat each year for all incumbents. Personal Services Matching may reflect increases in the Base Level due to the Social Security Tax maximum income limit and certain increases in Worker's Compensation and Unemployment Tax rates. Personal Services Matching also includes a \$30 increase in the monthly contribution for State employee's health insurance for a total State match per budgeted employee of \$350 per month.

Base Level consists of personal services costs for one (1) faculty member. Personal Services costs are included as Base Level due to the fact that Riverside Vocational Technical School is using a currently authorized state position to coordinate this program. Change Level increases total \$15,000 each year for Operating Expenses and \$200,000 each year for Grants and Aids for a total of \$215,000 each year of the 2007-09 biennium. These increases are requested in order to provide adequate authority for costs associated with the awarding of grants to program participants and to help supplement the rising costs of post-secondary college tuition, textbooks, and educational materials.

The Executive Recommendation provides for the Agency Request.

Appropriation Summary

Appropriation: 4GY Workplace Trng
Funding Sources: FTR - Riverside Voc Tech School - Federal

Historical Data

Agency Request and Executive Recommendation

Commitment Item	2005-2006	2006-2007	2006-2007	2007-2008			2008-2009		
	Actual	Budget	Authorized	Base Level	Agency	Executive	Base Level	Agency	Executive
Regular Salaries 5010000	0	26,000	0	26,000	26,000	26,000	26,000	26,000	26,000
#Positions	0	1	0	1	1	1	1	1	1
Personal Services Matching 5010003	0	9,503	0	9,871	9,871	9,871	9,871	9,871	9,871
Operating Expenses 5020002	0	5,000	0	0	15,000	15,000	0	15,000	15,000
Grants and Aid 5100004	0	165,194	0	0	200,000	200,000	0	200,000	200,000
Total	0	205,697	0	35,871	250,871	250,871	35,871	250,871	250,871
Funding Sources									
Federal Revenue 4000020	0	205,697		35,871	250,871	250,871	35,871	250,871	250,871
Total Funding	0	205,697		35,871	250,871	250,871	35,871	250,871	250,871
Excess Appropriation/(Funding)	0	0		0	0	0	0	0	0
Grand Total	0	205,697		35,871	250,871	250,871	35,871	250,871	250,871

This appropriation is established through the authority of the Miscellaneous Federal Grant Holding Account for FY07.

Base Levels for salary & associated matching costs are reflected for one (1) position due to the fact that the agency utilizes a currently authorized faculty position to coordinate the program.

Change Level by Appropriation

Appropriation: 4GY-Workplace Trng

Funding Sources: FTR - Riverside Voc Tech School - Federal

Agency Request

Change Level		2007-2008	Pos	Cumulative	% of BL	2008-2009	Pos	Cumulative	% of BL
BL	Base Level	35,871	1	35,871	100.0	35,871	1	35,871	100.0
C06	Restored Position	215,000	0	250,871	699.3	215,000	0	250,871	699.3

Executive Recommendation

Change Level		2007-2008	Pos	Cumulative	% of BL	2008-2009	Pos	Cumulative	% of BL
BL	Base Level	35,871	1	35,871	100.0	35,871	1	35,871	100.0
C06	Restored Position	215,000	0	250,871	699.3	215,000	0	250,871	699.3

Justification

C06	Additional appropriation of \$15,000 in Operating Expenses and \$200,000 in Grants and Aid is requested in order to provide adequate authority for costs associated with the awarding of an increasing number of grants to program participants and to help supplement the rising costs of post-secondary college tuition, textbooks and educational materials.
-----	-----------------------------------------------------------------------------------------------------------------------------------------------------------------------------------------------------------------------------------------------------------------------------------------------------------------------------------------------------------------

Analysis of Budget Request

Appropriation: 732 - Riverside VT-State Operations

Funding Sources: ETR - Riverside Voc-Tech School - State

Riverside Vocational Technical School operates five (5) campuses within the Department of Community Correction. These are the Varner Unit, Tucker Unit, Wrightsville Unit, Grimes Unit, and the McPherson Unit for female offenders. Short term or part-time programs are available at the Little Rock and Pine Bluff facilities of the Department of Community Corrections. Emphasis is placed on education and skill development which will result in lower recidivism rate and employment upon release. This appropriation is funded by general revenue.

A cost of living increase is not incorporated in Base Level pending the outcome of the Classification and Compensation Study. FY07 salary levels have been held flat each year for all incumbents. Personal Services Matching may reflect increases in the Base Level due to the Social Security Tax maximum income limit and certain increases in Worker's Compensation and Unemployment Tax rates. Personal Services Matching also includes a \$30 increase in the monthly contribution for State employee's health insurance for a total State match per budgeted employee of \$350 per month.

Riverside Vocational Technical School requests Change Levels totaling \$12,000 each year of the 2007-09 biennium in the Operating Expenses line item to accommodate building lease costs. The Agency is now leasing office space from the Arkansas Department of Correction School System in Pine Bluff, Arkansas pursuant to the provisions of Act 496 of 2005.

The Executive Recommendation provides for Base Level with the exception of Operating Expenses which is recommended as appropriation only in the amount of \$12,000 each year.

Appropriation Summary

Appropriation: 732 Riverside VT-State Operations
Funding Sources: ETR - Riverside Voc-Tech School - State

Historical Data

Agency Request and Executive Recommendation

Commitment Item	2005-2006	2006-2007	2006-2007	2007-2008			2008-2009		
	Actual	Budget	Authorized	Base Level	Agency	Executive	Base Level	Agency	Executive
Regular Salaries 5010000	1,316,407	1,397,675	1,981,089	1,397,675	1,397,675	1,397,675	1,397,675	1,397,675	1,397,675
#Positions	35	36	37	36	36	36	36	36	36
Personal Services Matching 5010003	402,266	443,292	572,176	456,034	456,034	456,034	456,034	456,034	456,034
Operating Expenses 5020002	157,357	159,742	159,896	159,742	171,742	171,742	159,742	171,742	171,742
Conference & Travel Expenses 5050009	4,000	4,000	4,000	4,000	4,000	4,000	4,000	4,000	4,000
Professional Fees 5060010	1,308	2,200	2,200	2,200	2,200	2,200	2,200	2,200	2,200
Data Processing 5090012	0	0	0	0	0	0	0	0	0
Capital Outlay 5120011	12,270	0	0	0	0	0	0	0	0
Total	1,893,608	2,006,909	2,719,361	2,019,651	2,031,651	2,031,651	2,019,651	2,031,651	2,031,651
Funding Sources									
General Revenue 4000010	1,893,608	2,006,909		2,019,651	2,031,651	2,019,651	2,019,651	2,031,651	2,019,651
Total Funding	1,893,608	2,006,909		2,019,651	2,031,651	2,019,651	2,019,651	2,031,651	2,019,651
Excess Appropriation/(Funding)	0	0		0	0	12,000	0	0	12,000
Grand Total	1,893,608	2,006,909		2,019,651	2,031,651	2,031,651	2,019,651	2,031,651	2,031,651

FY06 Actual Expenditures for Capital Outlay exceed Authorized Level due to a transfer from the Motor Vehicle Acquisition Fund.

Change Level by Appropriation

Appropriation: 732-Riverside VT-State Operations

Funding Sources: ETR - Riverside Voc-Tech School - State

Agency Request

Change Level		2007-2008	Pos	Cumulative	% of BL	2008-2009	Pos	Cumulative	% of BL
BL	Base Level	2,019,651	36	2,019,651	100.0	2,019,651	36	2,019,651	100.0
C01	Existing Program	12,000	0	2,031,651	100.5	12,000	0	2,031,651	100.5

Executive Recommendation

Change Level		2007-2008	Pos	Cumulative	% of BL	2008-2009	Pos	Cumulative	% of BL
BL	Base Level	2,019,651	36	2,019,651	100.0	2,019,651	36	2,019,651	100.0
C01	Existing Program	12,000	0	2,031,651	100.5	12,000	0	2,031,651	100.5

Justification

C01	This request is made to accommodate the advent of building lease costs due to the change of direction and supervision of Riverside Vocational School with the Department of Correction School System pursuant to the provisions of Act 496 of 2005.
-----	-----------------------------------------------------------------------------------------------------------------------------------------------------------------------------------------------------------------------------------------------------

Analysis of Budget Request

Appropriation: 750 - Plumbing Apprenticeship Program

Funding Sources: ETR - Riverside Voc Tech School - State

The Plumbing Apprenticeship Program is administered by Riverside Vocational Technical School. Program costs consists of personal services for one (1) faculty member and provides technical training in the area of plumbing to qualified persons incarcerated in facilities of the Department of Community Correction. The goal is to provide individuals with marketable skills to re-enter the workplace upon release from prison. This appropriation is funded by general revenue.

A cost of living increase is not incorporated in Base Level pending the outcome of the Classification and Compensation Study. FY07 salary levels have been held flat each year for all incumbents. Personal Services Matching may reflect increases in the Base Level due to the Social Security Tax maximum income limit and certain increases in Worker's Compensation and Unemployment Tax rates. Personal Services Matching also includes a \$30 increase in the monthly contribution for State employee's health insurance for a total State match per budgeted employee of \$350 per month.

Riverside Vocational Technical School requests Base Level for this appropriation for each year of the 2007-09 biennium.

The Executive Recommendation provides for the Agency Request.

Appropriation Summary

Appropriation: 750 Plumbing Apprenticeship Program
Funding Sources: ETR - Riverside Voc Tech School - State

Historical Data

Agency Request and Executive Recommendation

Commitment Item	2005-2006	2006-2007	2006-2007	2007-2008			2008-2009		
	Actual	Budget	Authorized	Base Level	Agency	Executive	Base Level	Agency	Executive
Regular Salaries 5010000	47,970	48,118	56,952	48,118	48,118	48,118	48,118	48,118	48,118
#Positions	1	1	1	1	1	1	1	1	1
Personal Services Matching 5010003	13,886	14,359	16,204	14,695	14,695	14,695	14,695	14,695	14,695
Total	61,856	62,477	73,156	62,813	62,813	62,813	62,813	62,813	62,813
Funding Sources									
General Revenue 4000010	61,856	62,477		62,813	62,813	62,813	62,813	62,813	62,813
Total Funding	61,856	62,477		62,813	62,813	62,813	62,813	62,813	62,813
Excess Appropriation/(Funding)	0	0		0	0	0	0	0	0
Grand Total	61,856	62,477		62,813	62,813	62,813	62,813	62,813	62,813