

DEPARTMENT OF WORKFORCE EDUCATION

Enabling Laws

Act 2037 of 2005

A.C.A. § 25-30-103 et seq.

A.C.A. § 25-30-201 et seq.

A.C.A. § 6-11-205 and 206

History and Organization

Mission Statement: To provide leadership and contribute resources to serve the diverse and changing workforce training needs of the youths and adults of Arkansas.

Agency History: The Arkansas Department of Workforce Education was created by Act 803 of 1997, the Workforce Education Act, to administer public secondary and postsecondary vocational, technical, and adult education programs; Arkansas Rehabilitation Services; Arkansas State Approving Agency for Veterans Training; and the Federal Surplus Property Agency. Act 803 abolished the Vocational and Technical Education Division of the Department of Education, the Governor's Commission on Adult Literacy, and the Advisory Council for Vocational-Technical Education and transferred them to the Department of Workforce Education. The State Board of Vocational Education was abolished and transferred to the State Board of Workforce Education and Career Opportunities.

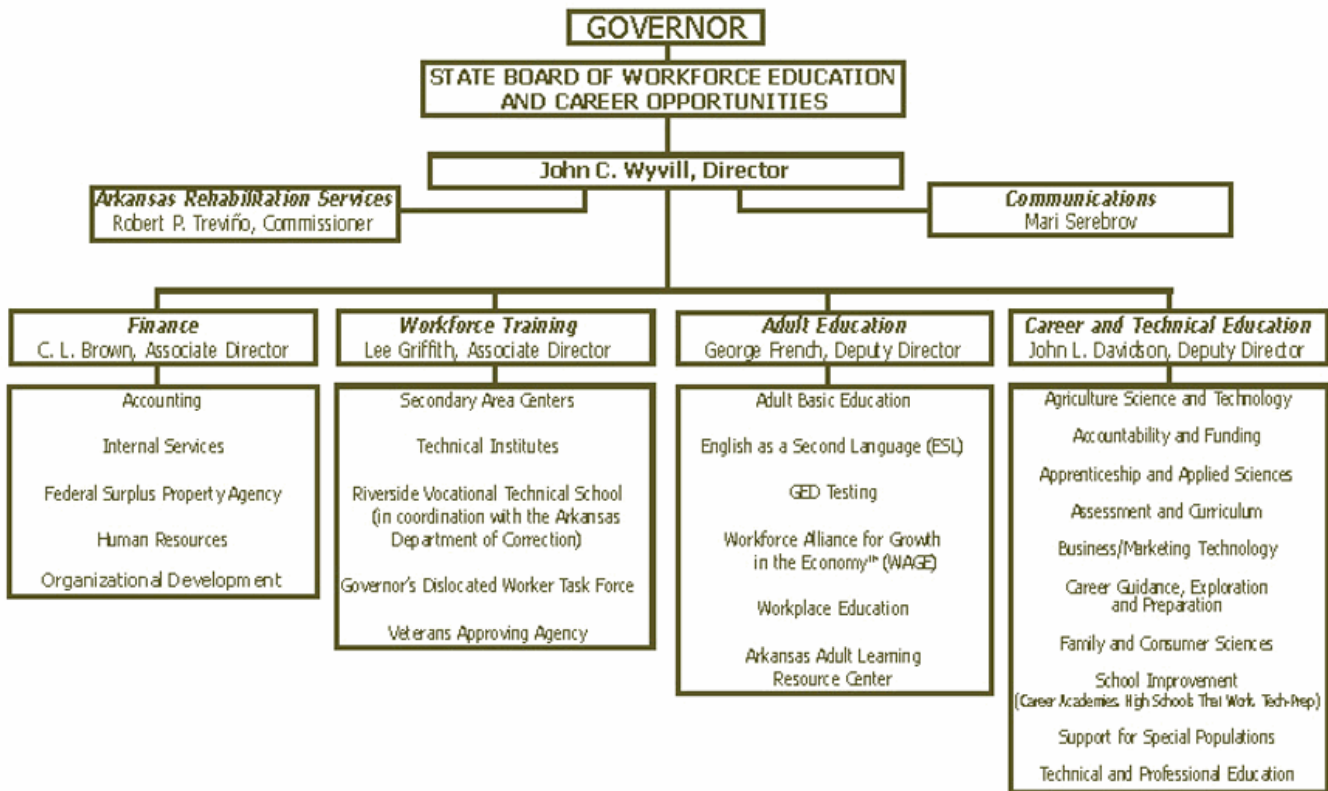
Statutory Responsibility and Primary Activities: Enabling legislation and the powers and duties of the Department are codified in Arkansas Code Annotated 25-30-103, 25-30-104, 25-30-106, 25-30-107, 25-30-201, 6-11-205, and 6-11-206. Responsibilities include:

- General control and supervision of all programs of vocational, technical, and occupational education in secondary institutions and in state postsecondary vocational technical schools, secondary area centers, public schools, and in other public education facilities or institutions with the exception of technical colleges, community colleges, universities, and colleges;
- Authority to establish and operate area vocational technical and adult education schools of less than college grade;
- Promotion of vocational education in subjects that are an essential and integral part of the public school system of education in Arkansas;
- Preparation of teachers of vocational technical subjects; setting qualifications for teachers, directors, and supervisors;
- Receipt and administration of any and all federal funds made available to the State for the purpose of assisting local school districts in providing vocational education of less than college grade and adult education for persons sixteen years of age and older; and
- Authority and responsibility for rehabilitation services provided through Arkansas Rehabilitation Services.

All activities of the Department are focused on workforce education for all citizens in the State, as indicated in the mission statement. Workforce education, at both the secondary and postsecondary/adult levels, has been expanded to serve more students and is being reformed by an

emphasis on integrating the basic academic and workplace skills with technical education. Initiatives such as the career opportunities initiative, youth apprenticeship, tech prep, and career clusters are at the center of educational reform, innovation, and progressive activities that are ongoing in the Department. Working with other state agencies, including the Departments of Education and Higher Education and with the educational institutions in Arkansas, the Department of Workforce Education is committed to doing everything possible to better prepare our current and future workforce for the work to be done in our State.

State Board Oversight: The Department of Workforce Education is under the authority of the State Board of Workforce Education and Career Opportunities.



Agency Commentary

To satisfy the growing demand to meet economic development needs across the State by providing adequate and equitable career and technical education statewide at high schools and secondary area technical centers and to adults, an increase in funding is critical. The following requests would cover

- The addition of seven new secondary area technical centers;
- The growth in enrollment at secondary area technical centers (5 percent/year);
- The backlog and new requests for start-up equipment for new career and technical education (CTE) programs at high schools and secondary area technical centers;
- The growth in cost and number of Arkansans utilizing adult education centers;
- Stable funding for the Technical Careers Student Loan Forgiveness Program;
- The growing demand for traditional apprenticeship programs;
- Updates and replacement of equipment used in CTE programs;

- Restoration of MFG appropriation for Veterans State Approving Agency;
- Additional Grants and Aids appropriation for the Construction Training program;
- An increase in funds and appropriation for Literacy Councils statewide;
- Basic increases in maintenance and operation expenses; and
- Restoration of unfunded positions.

Secondary Area Technical Centers

DWE, in partnership with the public high schools and two-year colleges, supports a series of secondary area technical centers. The objective of these centers is to provide high school students affordable training for entry-level skills in areas where employment opportunities exist or need to be developed. Programs are approved on the basis of student interest and local economic development opportunities. The partnerships with the two-year colleges has led to more students enrolling in postsecondary technical programs. To have these services available to all students in the State, seven additional centers are needed. To meet this need and adequately support existing centers, DWE is requesting appropriation and funding of \$16,989,824 in the 2007-08 year and \$19,598,736 in the 2008-09 year from the Public School Fund. This increase in funding is critical if Arkansas is to provide equitable career and technical education statewide at our secondary area technical centers and continue to invest in developing tomorrow's workforce.

CTE Start-up Funds

When high schools and secondary area technical centers want to offer a new program of career and technical study to address economic development needs in their communities, they apply to DWE for approval and funding for the instructional equipment, nonconsumable supplies, and program software required for that program. In each of the past three years, DWE has received more than 200 new program applications. Because of an appropriation capped at \$2.37 million for new program start-ups, DWE has been able to fund fewer than 40 percent of the applications each year. (This could create an equity issue when analyzed statewide.) If the appropriation and funding from the Public School Fund for the new program start-up line item were increased on a one-time basis to \$6 million, DWE would be able to fund most of the backlog of districts with approvable programs. This one-time increase would enable DWE to return to a year-to-year approval/funding cycle. In subsequent years, the new program start-up appropriation should be increased to \$4 million to allow for the continued growth of quality CTE programs.

Adult Education

Recognizing the importance of education to both the individual and the economic well-being of the State, Arkansas provides a second chance at a K-12 education through its free adult education program. Trained certified teachers at 52 centers and tutors at 30 literacy councils throughout the State offer flexible classes tailored to the needs of adult students - whether it's learning the basics, preparing for GED tests, mastering job readiness skills, or developing language and citizenship skills. By addressing their needs, adult education increases the earning (and spending power) of these adults, who then invest in the state through higher income and sales taxes. Despite the importance of this program, adult education has seen its state funding frozen at \$17.9 million since 1992, but its expenses, some of which are mandated, continue to escalate. The program has had to cut services that would enable some of the neediest Arkansans to help themselves realize the American dream. To fulfill the mission of the adult education program and fully serve the growing number of Arkansans in need of its services, the Agency is requesting \$22.3 million appropriation and funding from the Public School Fund.

Technical Careers Student Loan Forgiveness Program

Stable appropriation and funding is requested for the Technical Careers Student Loan Forgiveness Program. Since the inception of the program, it has not had a consistent and stable source of funding. The request is for \$1,400,000 each year of appropriation and funding from the Public School Fund. This will allow the payment of up to 560 awards each year at the maximum authorized level to students who have completed both their training and work requirements.

CTE Replacement Equipment

A line item to replace broken or obsolete equipment used in CTE programs was cut in 2000 and has never been reinstated. As with school facilities, instructional equipment falls into a state of critical disrepair if there is no funding for repairs or upgrades. As a result of the lack of funding, the State has an investment of more than \$113 million in instructional equipment that is in critical need of repair or upgrade. Much of this equipment is decades old and is not adequate to prepare students for the workplace of the 21st century. Based on a seven-year equipment lifecycle, the average annual cost of equipment upgrades exceeds \$16 million statewide. A continuing equipment replacement/upgrade line item of \$16 million appropriation and funding in the Public School Fund would, over a seven-year cycle, reduce most of the backlog of unreliable - and sometimes dangerous - equipment.

Employment Summary

	Male	Female	Total	%
White Employees	0	1	1	100 %
Black Employees	0	0	0	0 %
Other Racial Minorities	0	0	0	0 %
Total Minorities			0	0 %
Total Employees			1	100 %

Publications

A.C.A 25-1-204

Name	Statutory Authorization	Required for		# Of Copies	Reason (s) for Continued Publication and Distribution
		Governor	General Assembly		
None	N/A	N	N	0	N/A

Department Appropriation Summary

Appropriation		Historical Data						Agency Request and Executive Recommendation							
		2005-2006		2006-2007		2006-2007		2007-2008				2008-2009			
		Actual	Pos	Budget	Pos	Authorized	Pos	Agency	Pos	Executive	Pos	Agency	Pos	Executive	Pos
200	Vocational Start-Up Grants	2,370,000	0	2,370,000	0	2,370,000	0	22,000,000	0	2,370,000	0	20,000,000	0	2,370,000	0
201	Vocational Center Aid	10,434,144	0	11,336,383	0	11,336,383	0	16,989,824	0	11,336,383	0	19,598,736	0	11,336,383	0
427	Gov Cmsn on Adult Literacy	749,842	1	767,977	1	769,726	1	843,181	1	768,181	1	843,181	1	768,181	1
453	Adult Basic & General Educ	18,095,342	0	18,560,920	0	19,300,000	0	22,300,000	0	20,360,920	0	22,300,000	0	20,360,920	0
4KW	Loan Forgiveness	0	0	0	0	0	0	1,400,000	0	0	0	1,400,000	0	0	0
681	Coord Career Ed Svcs	960,977	0	1,119,433	0	1,119,433	0	1,119,433	0	1,119,433	0	1,119,433	0	1,119,433	0
Total		32,610,305	1	34,154,713	1	34,895,542	1	64,652,438	1	35,954,917	1	65,261,350	1	35,954,917	1

Funding Sources			%		%		%		%		%		%		
Fund Balance	4000005	4,632	0.0	360,206	1.0			151,946	0.2	151,946	0.4	151,946	0.2	151,946	0.4
Educational Excellence Fund	4000220	10,182,723	30.9	11,485,716	33.5			11,830,287	18.3	11,485,716	31.8	11,830,287	18.1	11,485,716	31.8
Workforce Ed Public School Fund	4000745	22,783,156	69.1	22,460,737	65.5			52,822,151	81.5	24,469,201	67.8	53,431,063	81.7	24,469,201	67.8
Total Funds		32,970,511	100.0	34,306,659	100.0			64,804,384	100.0	36,106,863	100.0	65,413,296	100.0	36,106,863	100.0
Excess Appropriation/(Funding)		(360,206)		(151,946)				(151,946)		(151,946)		(151,946)		(151,946)	
Grand Total		32,610,305		34,154,713				64,652,438		35,954,917		65,261,350		35,954,917	

Actuals and Budget Amounts in Federal-Job Training Partnership Act and Federal-Veteran's Approving Agency exceed Authorized Appropriation due to a transfer from the Miscellaneous Federal Grants Holding Account.

Agency Position Usage Report

FY2004-2005						FY2005-2006						FY2006-2007					
Authorized in Act	Budgeted			Unbudgeted	% of Authorized Unused	Authorized in Act	Budgeted			Unbudgeted	% of Authorized Unused	Authorized in Act	Budgeted			Unbudgeted	% of Authorized Unused
	Filled	Unfilled	Total	Total			Filled	Unfilled	Total	Total			Filled	Unfilled	Total	Total	
105	88	7	95	10	16.19%	108	98	1	99	9	9.26%	108	95	8	103	5	12.04%

Total Positions Budgeted for FY07 includes 1 position budgeted in the Governor's Commission on Adult Literacy funded out of the Workforce Education Public School Fund.

Analysis of Budget Request

Appropriation: 200 - Vocational Start-Up Grants

Funding Sources: JWE-Workforce Education Public School Fund

This appropriation is used to award funds to schools for the purpose of purchasing capital equipment, nonconsumable supplies and program software to start newly approved vocational programs for the different occupational program areas, to support the minimum required equipment to meet program standards, and to support short-term adult skills training classes. The program is funded through the Workforce Education Public School Fund.

The Department of Workforce Education is requesting a total change level increase in Grants and Aid of \$19,630,000 for FY08 and \$17,630,000 in FY09. Of the amount for FY08, \$3,630,000 is requested to address the increase of new program applications that the agency has received over the past three years. Funded appropriation levels have remained at the same level, while new program requests have increased. The additional \$16,000,000 requested for FY08 is to assist schools in replacing current Career and Technical Education (CTE) equipment that is broken and/or obsolete. For FY09, \$1,630,000 of the request is for continued approval of eligible new programs, while the remaining \$16,000,000 would go to continuing to replace the CTE equipment.

The Executive Recommendation provides for Base Level. Additionally, the Executive Recommendation provides funding and appropriation in the amount of \$10,000,000 out of General Improvement for the Biennium to replace broken and/or obsolete equipment.

Appropriation Summary

Appropriation: 200 Vocational Start-Up Grants
Funding Sources: JWE-Workforce Education Public School Fund

Historical Data

Agency Request and Executive Recommendation

Commitment Item	2005-2006	2006-2007	2006-2007	2007-2008			2008-2009		
	Actual	Budget	Authorized	Base Level	Agency	Executive	Base Level	Agency	Executive
Grants and Aid 5100004	2,370,000	2,370,000	2,370,000	2,370,000	22,000,000	2,370,000	2,370,000	20,000,000	2,370,000
Total	2,370,000	2,370,000	2,370,000	2,370,000	22,000,000	2,370,000	2,370,000	20,000,000	2,370,000
Funding Sources									
Workforce Ed Public School Fund 4000745	2,370,000	2,370,000		2,370,000	22,000,000	2,370,000	2,370,000	20,000,000	2,370,000
Total Funding	2,370,000	2,370,000		2,370,000	22,000,000	2,370,000	2,370,000	20,000,000	2,370,000
Excess Appropriation/(Funding)	0	0		0	0	0	0	0	0
Grand Total	2,370,000	2,370,000		2,370,000	22,000,000	2,370,000	2,370,000	20,000,000	2,370,000

Change Level by Appropriation

Appropriation: 200-Vocational Start-Up Grants
Funding Sources: JWE-Workforce Education Public School Fund

Agency Request

Change Level		2007-2008	Pos	Cumulative	% of BL	2008-2009	Pos	Cumulative	% of BL
BL	Base Level	2,370,000	0	2,370,000	100.0	2,370,000	0	2,370,000	100.0
C01	Existing Program	3,630,000	0	6,000,000	253.1	1,630,000	0	4,000,000	168.7
C02	New Program	16,000,000	0	22,000,000	928.2	16,000,000	0	20,000,000	843.8

Executive Recommendation

Change Level		2007-2008	Pos	Cumulative	% of BL	2008-2009	Pos	Cumulative	% of BL
BL	Base Level	2,370,000	0	2,370,000	100.0	2,370,000	0	2,370,000	100.0
C01	Existing Program	0	0	2,370,000	100.0	0	0	2,370,000	100.0
C02	New Program	0	0	2,370,000	100.0	0	0	2,370,000	100.0

Justification

C01	CTE Start-up Funds - When high schools and secondary area technical centers want to offer a new program of career and technical study to address economic development needs in their communities, they apply to DWE for approval and funding for the instructional equipment, nonconsumable supplies, and program software required for that program. In each of the past three years, DWE has received more than 200 new program applications. Because of an appropriation capped at \$2.37 million for new program start-ups, DWE has been able to fund fewer than 40 percent of the applications each year. (This could create an equity issue when analyzed statewide.) If the new program start-up line item in the public school fund were increased on a one-time basis to \$6 million, DWE would be able to fund most of the backlog of districts with approvable programs. This one-time increase would enable DWE to return to a year-to-year approval/funding cycle. In subsequent years, the new program start-up appropriation should be increased to \$4 million to allow for the continued growth of quality CTE programs.
C02	CTE Replacement Equipment - A line item to replace broken or obsolete equipment used in CTE programs was cut in 2000 and has never been reinstated. As with school facilities, instructional equipment falls into a state of critical disrepair if there is no funding for repairs or upgrades. As a result of the lack of funding, the state has an investment of more than \$113 million in instructional equipment that is in critical need of repair or upgrade. Much of this equipment is decades old and is not adequate to prepare students for the workplace of the 21st century. Based on a seven-year equipment lifecycle, the average annual cost of equipment upgrades exceeds \$16 million statewide. A continuing equipment replacement/upgrade line item of \$16 million in the public school fund would, over a seven-year cycle, reduce most of the backlog of unreliable – and sometimes dangerous – equipment.

Analysis of Budget Request

Appropriation: 201 - Vocational Center Aid

Funding Sources: JWE-Workforce Education Public School Fund

This program distributes aid to vocational centers, in a partnership with public high schools and two-year colleges, under the rules and regulations of the State Board based on full-time equivalency. The objective of these centers is to provide high school students affordable training for entry-level skills in areas where employment opportunities exist or need to be developed. Programs are approved on the basis of student interest and local economic development opportunities. The program is funded through the Workforce Education Public School Fund.

The Agency is requesting an increase in Grants/Aid appropriation and funding of \$5,653,441 for FY08 and \$8,262,353 for FY09. These increases are needed to allow the Department of Workforce Education to open 7 additional centers and to extend funding to vocational centers that are currently underserved.

The Executive Recommendation provides for Base Level.

Appropriation Summary

Appropriation: 201 Vocational Center Aid
Funding Sources: JWE-Workforce Education Public School Fund

Historical Data

Agency Request and Executive Recommendation

Commitment Item	2005-2006	2006-2007	2006-2007	2007-2008			2008-2009		
	Actual	Budget	Authorized	Base Level	Agency	Executive	Base Level	Agency	Executive
Grants and Aid 5100004	10,434,144	11,336,383	11,336,383	11,336,383	16,989,824	11,336,383	11,336,383	19,598,736	11,336,383
Total	10,434,144	11,336,383	11,336,383	11,336,383	16,989,824	11,336,383	11,336,383	19,598,736	11,336,383
Funding Sources									
Fund Balance 4000005	4,632	360,206		151,946	151,946	151,946	151,946	151,946	151,946
Workforce Ed Public School Fund 4000745	10,789,718	11,128,123		11,336,383	16,989,824	11,336,383	11,336,383	19,598,736	11,336,383
Total Funding	10,794,350	11,488,329		11,488,329	17,141,770	11,488,329	11,488,329	19,750,682	11,488,329
Excess Appropriation/(Funding)	(360,206)	(151,946)		(151,946)	(151,946)	(151,946)	(151,946)	(151,946)	(151,946)
Grand Total	10,434,144	11,336,383		11,336,383	16,989,824	11,336,383	11,336,383	19,598,736	11,336,383

Change Level by Appropriation

Appropriation: 201-Vocational Center Aid
Funding Sources: JWE-Workforce Education Public School Fund

Agency Request

Change Level		2007-2008	Pos	Cumulative	% of BL	2008-2009	Pos	Cumulative	% of BL
BL	Base Level	11,336,383	0	11,336,383	100.0	11,336,383	0	11,336,383	100.0
C01	Existing Program	5,653,441	0	16,989,824	149.8	8,262,353	0	19,598,736	172.8

Executive Recommendation

Change Level		2007-2008	Pos	Cumulative	% of BL	2008-2009	Pos	Cumulative	% of BL
BL	Base Level	11,336,383	0	11,336,383	100.0	11,336,383	0	11,336,383	100.0
C01	Existing Program	0	0	11,336,383	100.0	0	0	11,336,383	100.0

Justification

C01 Secondary Area Technical Centers - DWE, in partnership with the public high schools and two-year colleges, supports a series of secondary area technical centers. The objective of these centers is to provide high school students affordable training for entry-level skills in areas where employment opportunities exist or need to be developed. Programs are approved on the basis of student interest and local economic development opportunities. The partnerships with the two-year colleges has led to more students enrolling in postsecondary technical programs. To have these services available to all students in the state, seven additional centers are needed. To meet this need and adequately support existing centers, DWE will require \$16,989,824 in the 2007-08 year and \$19,598,736 in the 2008-09 year. This increase in funding is critical if Arkansas is to provide equitable career and technical education statewide at our secondary area technical centers and continue to invest in developing tomorrow's workforce.

Analysis of Budget Request

Appropriation: 427 - Gov Cmsn on Adult Literacy

Funding Sources: JWE-Workforce Education Public School Fund

The Governor's Commission on Adult Literacy is funded from the Workforce Education Public School Fund. The appropriation consists of one position, supporting Operating Expenses, Grants that are made to literacy councils, and the Recognition Program. This program was transferred to the Department of Workforce Education during the 81st General Assembly.

A cost of living increase is not incorporated in the Base Level pending the outcome of the Classification and Compensation Study. FY07 salary levels have been held flat each year for all incumbents. Personal Salary Matching may reflect increases in Base Level due to the Social Security Tax maximum income limit and certain increases in Worker's Compensation and Unemployment Tax rates. Personal Services Matching also includes a \$30 increase in the monthly contribution for State employee's health insurance for a total State match per budgeted employee of \$350 per month.

The Agency is requesting an increase in the Grants and Aid line item of \$75,000 for each fiscal year. This increase is to assist community-based nonprofit organizations in providing services to adults with less than a high school education.

The Executive Recommendation provides for Base Level.

Appropriation Summary

Appropriation: 427 Gov Cmsn on Adult Literacy
Funding Sources: JWE-Workforce Education Public School Fund

Historical Data

Agency Request and Executive Recommendation

Commitment Item		2005-2006	2006-2007	2006-2007	2007-2008			2008-2009		
		Actual	Budget	Authorized	Base Level	Agency	Executive	Base Level	Agency	Executive
Regular Salaries	5010000	27,339	26,691	28,320	26,691	26,691	26,691	26,691	26,691	26,691
#Positions		1	1	1	1	1	1	1	1	1
Personal Services Matching	5010003	7,923	8,039	8,159	8,243	8,243	8,243	8,243	8,243	8,243
Operating Expenses	5020002	39,589	52,242	52,242	52,242	52,242	52,242	52,242	52,242	52,242
Conference & Travel Expenses	5050009	0	6,005	6,005	6,005	6,005	6,005	6,005	6,005	6,005
Professional Fees	5060010	0	0	0	0	0	0	0	0	0
Data Processing	5090012	0	0	0	0	0	0	0	0	0
Grants and Aid	5100004	674,991	675,000	675,000	675,000	750,000	675,000	675,000	750,000	675,000
Capital Outlay	5120011	0	0	0	0	0	0	0	0	0
Total		749,842	767,977	769,726	768,181	843,181	768,181	768,181	843,181	768,181
Funding Sources										
Workforce Ed Public School Fund	4000745	749,842	767,977		768,181	843,181	768,181	768,181	843,181	768,181
Total Funding		749,842	767,977		768,181	843,181	768,181	768,181	843,181	768,181
Excess Appropriation/(Funding)		0	0		0	0	0	0	0	0
Grand Total		749,842	767,977		768,181	843,181	768,181	768,181	843,181	768,181

Change Level by Appropriation

Appropriation: 427-Gov Cmsn on Adult Literacy
Funding Sources: JWE-Workforce Education Public School Fund

Agency Request

Change Level		2007-2008	Pos	Cumulative	% of BL	2008-2009	Pos	Cumulative	% of BL
BL	Base Level	768,181	1	768,181	100.0	768,181	1	768,181	100.0
C01	Existing Program	75,000	0	843,181	109.7	75,000	0	843,181	109.7

Executive Recommendation

Change Level		2007-2008	Pos	Cumulative	% of BL	2008-2009	Pos	Cumulative	% of BL
BL	Base Level	768,181	1	768,181	100.0	768,181	1	768,181	100.0
C01	Existing Program	0	0	768,181	100.0	0	0	768,181	100.0

Justification

C01	To allow community-based nonprofit organizations to provide services to adults with less than a high school education.
-----	--

Analysis of Budget Request

Appropriation: 453 - Adult Basic & General Educ

Funding Sources: JWE-Workforce Education Public School Fund

The Adult Basic and General Adult Education program provides grants for educating those adults with less than a high school equivalency and for retraining those already in the workforce. Adult education serves adult learners through adult basic education classes, which are designed for adults functioning up to the 8th grade level. General adult education classes prepare adults who score at the 9th to 12th grade levels. Funding for this appropriation is provided from the Workforce Education Public School Fund.

The Agency is requesting an increase in Grants and Aid of \$3,739,080 for both fiscal years to maintain level funding for adult education programs.

The Executive Recommendation provides for an additional \$1,800,000 of funding and appropriation for each fiscal year.

In summary, the Executive Recommendation for new general revenue above the Base Level is:

- \$1,800,000 for both fiscal years for the Adult Basic and General Education program.

Appropriation Summary

Appropriation: 453 Adult Basic & General Educ
Funding Sources: JWE-Workforce Education Public School Fund

Historical Data

Agency Request and Executive Recommendation

Commitment Item	2005-2006	2006-2007	2006-2007	2007-2008			2008-2009		
	Actual	Budget	Authorized	Base Level	Agency	Executive	Base Level	Agency	Executive
Grants and Aid 5100004	18,095,342	18,560,920	19,300,000	18,560,920	22,300,000	20,360,920	18,560,920	22,300,000	20,360,920
Total	18,095,342	18,560,920	19,300,000	18,560,920	22,300,000	20,360,920	18,560,920	22,300,000	20,360,920
Funding Sources									
Educational Excellence Fund 4000220	10,182,723	11,485,716		11,485,716	11,830,287	11,485,716	11,485,716	11,830,287	11,485,716
Workforce Ed Public School Fund 4000745	7,912,619	7,075,204		7,075,204	10,469,713	8,875,204	7,075,204	10,469,713	8,875,204
Total Funding	18,095,342	18,560,920		18,560,920	22,300,000	20,360,920	18,560,920	22,300,000	20,360,920
Excess Appropriation/(Funding)	0	0		0	0	0	0	0	0
Grand Total	18,095,342	18,560,920		18,560,920	22,300,000	20,360,920	18,560,920	22,300,000	20,360,920

Change Level by Appropriation

Appropriation: 453-Adult Basic & General Educ
Funding Sources: JWE-Workforce Education Public School Fund

Agency Request

Change Level		2007-2008	Pos	Cumulative	% of BL	2008-2009	Pos	Cumulative	% of BL
BL	Base Level	18,560,920	0	18,560,920	100.0	18,560,920	0	18,560,920	100.0
C01	Existing Program	3,739,080	0	22,300,000	120.1	3,739,080	0	22,300,000	120.1

Executive Recommendation

Change Level		2007-2008	Pos	Cumulative	% of BL	2008-2009	Pos	Cumulative	% of BL
BL	Base Level	18,560,920	0	18,560,920	100.0	18,560,920	0	18,560,920	100.0
C01	Existing Program	1,800,000	0	20,360,920	109.7	1,800,000	0	20,360,920	109.7

Justification

C01	Recognizing the importance of education to both the individual and the economic well-being of the state, Arkansas provides a second chance at a K-12 education through its free adult education program. Trained certified teachers at 52 centers and tutors at 30 literacy councils throughout the state offer flexible classes tailored to the needs of adult students – whether it's learning the basics, preparing for GED tests, mastering job readiness skills, or developing language and citizenship skills. By addressing their needs, adult education increases the earning (and spending power) of these adults, who then invest in the state through higher income and sales taxes. Despite the importance of this program, adult education has seen its state funding frozen at \$17.9 million since 1992, but its expenses, some of which are mandated, continue to escalate. The program has had to cut services that would enable some of the neediest Arkansans to help themselves realize the American dream. To fulfill its mission and fully serve the growing number of Arkansans in need of its services, the adult education program must be funded at \$22.3 million.
-----	---

Analysis of Budget Request

Appropriation: 4KW - Loan Forgiveness

Funding Sources: JWE-Workforce Education Public School Fund

The Arkansas Technical Career Student Loan Forgiveness Program was created by Act 652 of 1999 to provide assistance to Arkansans who enter and complete technical education programs that qualify them to fill the demand for employees in various technical occupations. The Department of Workforce Education may pay up to \$2,500 per year for each person qualified for a maximum of four years. The agency has 1,182 students that are "in process," which means they have submitted an Intent to Apply Form and are enrolled in a designated program. 1,457 individuals have received loan forgiveness payments as for February 2, 2006. Funding for this program has come from General Improvement funding in previous biennial budgets , however, the Department of Workforce Education has requested funding for this appropriation from the Workforce Education Public School Fund.

The appropriation has a Base Level of zero and the Change Level request is for \$1,400,000 in the Grants and Aid commitment item. Funding is requested from the Workforce Education Public School Fund.

The Executive Recommendation does not recommend this appropriation.

Appropriation Summary

Appropriation: 4KW Loan Forgiveness
Funding Sources: JWE-Workforce Education Public School Fund

Historical Data

Agency Request and Executive Recommendation

Commitment Item	2005-2006	2006-2007	2006-2007	2007-2008			2008-2009		
	Actual	Budget	Authorized	Base Level	Agency	Executive	Base Level	Agency	Executive
Grants and Aid 5100004	0	0	0	0	1,400,000	0	0	1,400,000	0
Total	0	0	0	0	1,400,000	0	0	1,400,000	0
Funding Sources									
Workforce Ed Public School Fund 4000745	0	0		0	1,400,000	0	0	1,400,000	0
Total Funding	0	0		0	1,400,000	0	0	1,400,000	0
Excess Appropriation/(Funding)	0	0		0	0	0	0	0	0
Grand Total	0	0		0	1,400,000	0	0	1,400,000	0

Act 2134 of 2005 authorized the payment of the Loan Forgiveness (2VN/KBL52VN) from the General Improvement Fund. The Agency is requesting the Loan Forgiveness program now be funded from the Workforce Education Public School Fund.

Change Level by Appropriation

Appropriation: 4KW-Loan Forgiveness

Funding Sources: JWE-Workforce Education Public School Fund

Agency Request

Change Level		2007-2008	Pos	Cumulative	% of BL	2008-2009	Pos	Cumulative	% of BL
C02	New Program	1,400,000	0	1,400,000	100.0	1,400,000	0	1,400,000	100.0

Executive Recommendation

Change Level		2007-2008	Pos	Cumulative	% of BL	2008-2009	Pos	Cumulative	% of BL
C02	New Program	0	0	0	100.0	0	0	0	100.0

Justification

C02	Stable appropriation and funding is requested for the Technical Careers Student Loan Forgiveness Program. Since the inception of the program, it has not had a consistent and stable source of funding. This will allow the payment of up to 560 awards each year at the maximum authorized level to students who have completed both their training and work requirements.
-----	---

Analysis of Budget Request

Appropriation: 681 - Coord Career Ed Srvs

Funding Sources: JWE-Workforce Education Public School Fund

The Coordinated Career Education Services- Special Needs Students program provides grants to coordinated career education programs in which students with disabilities attend academic classes in the morning and work in the afternoon. Special Needs Programs provide special projects and adaptive equipment for secondary and postsecondary career and technical education students with disabilities and vocational counselors at several secondary area vocational centers. Funding for this appropriation is provided from the Workforce Education Public School Fund.

The Agency is requesting Base Level for the 2007-09 Biennium.

The Executive Recommendation provides for Agency Request.

Appropriation Summary

Appropriation: 681 Coord Career Ed Srvs
Funding Sources: JWE-Workforce Education Public School Fund

Historical Data

Agency Request and Executive Recommendation

Commitment Item	2005-2006	2006-2007	2006-2007	2007-2008			2008-2009		
	Actual	Budget	Authorized	Base Level	Agency	Executive	Base Level	Agency	Executive
Grants and Aid 5100004	960,977	1,119,433	1,119,433	1,119,433	1,119,433	1,119,433	1,119,433	1,119,433	1,119,433
Total	960,977	1,119,433	1,119,433	1,119,433	1,119,433	1,119,433	1,119,433	1,119,433	1,119,433
Funding Sources									
Workforce Ed Public School Fund 4000745	960,977	1,119,433		1,119,433	1,119,433	1,119,433	1,119,433	1,119,433	1,119,433
Total Funding	960,977	1,119,433		1,119,433	1,119,433	1,119,433	1,119,433	1,119,433	1,119,433
Excess Appropriation/(Funding)	0	0		0	0	0	0	0	0
Grand Total	960,977	1,119,433		1,119,433	1,119,433	1,119,433	1,119,433	1,119,433	1,119,433