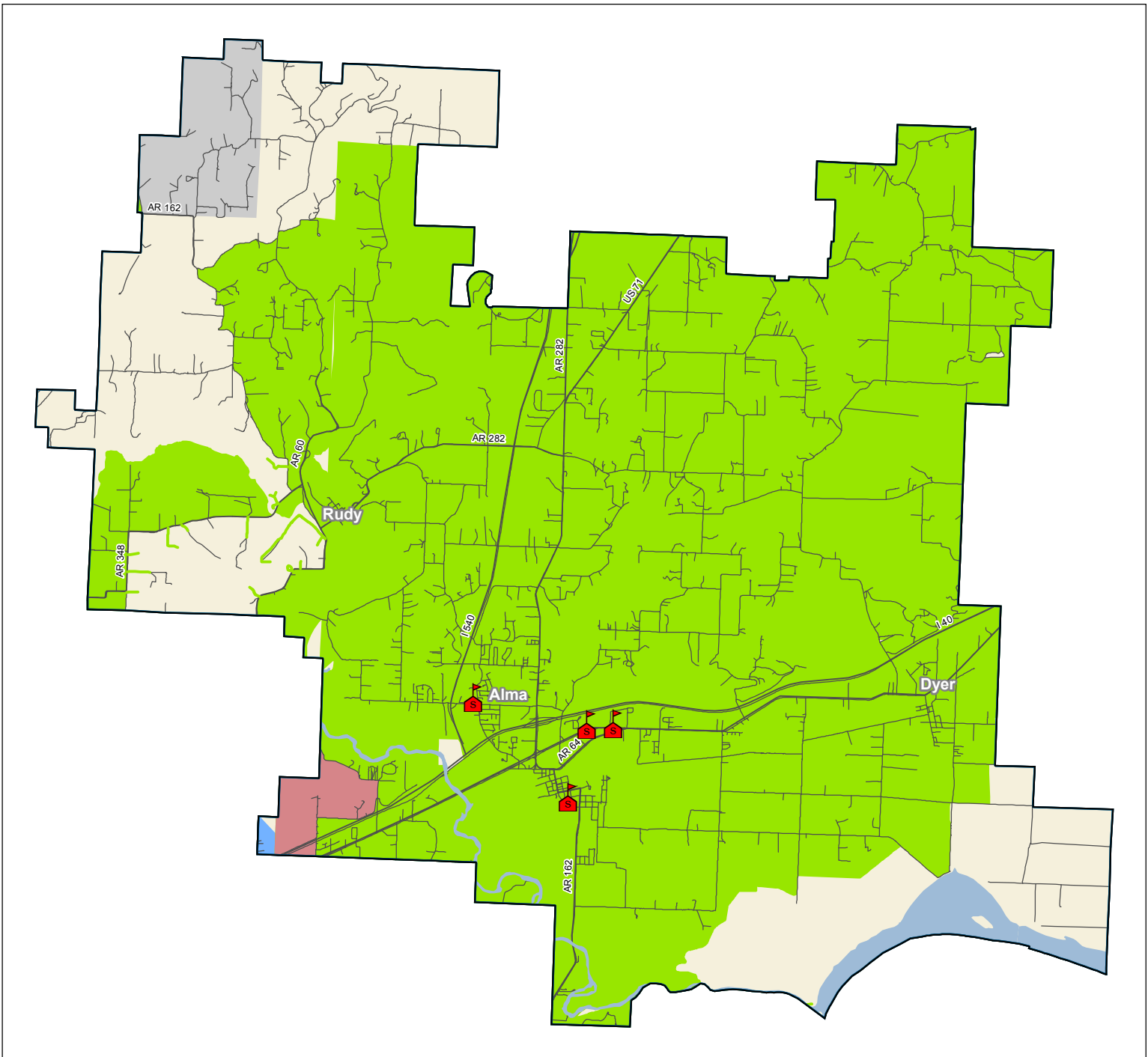


Broadband Availability Wireline & Fixed-Wireless Alma School District



LEGAL DISCLAIMER

The data herein, including but not limited to geographic data, tabular data, analytical data, electronic data structures or files, are provided "as is" without warranty of any kind, either expressed or implied, or statutory, including, but not limited to, the implied warranties or merchantability and fitness for a particular purpose. The entire risk as to the quality and performance of the data is assumed by the user. No guarantee of accuracy is granted, nor is any responsibility for reliance thereon assumed. In no event shall the Connect Arkansas Organization, be liable for direct, indirect, incidental, consequential or special damages of any kind, including, but not limited to, loss of anticipated profits or benefits arising out of use of or reliance on the data.

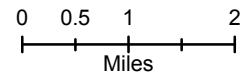
The Connect Arkansas Organization does not accept liability for any damages or misrepresentation caused by inaccuracies in the data or as a result of changes to the data caused by system transfers or other transformations or conversions, nor is there responsibility assumed to maintain the data in any manner or form.

This data has been developed from the best available sources. Although efforts have been made to ensure that the data is accurate and reliable, errors and variable conditions originating from physical sources used to develop the data may be reflected in the data supplied. Users must be aware of these conditions and bear responsibility for the appropriate use of the information with respect to possible errors, scale, resolution, rectification, positional accuracy, development methodology, time period, environmental and climatic conditions and other circumstances specific to this data. The user is responsible for understanding the accuracy limitations of the data provided herein. The burden for determining fitness for use lies entirely with the user. The user should refer to the accompanying metadata notes for a description of the data and data development procedures.

Although this data has been processed successfully on computers at the Connect Arkansas Organization, no guarantee, expressed or implied, is made by Connect Arkansas Organization regarding the use of these data on any other system, nor does the act of distribution constitute or imply any such warranty. Distribution of these data is intended for information purposes and should not be considered authoritative for engineering, legal and other site-specific uses.

Connect Arkansas is an affiliate of the Arkansas Capital Corporation Group. Copyright © 2007-2011. All rights reserved.

	Public School
	Unserviced
	National Parks and Forests
	Water
Broadband (Download > 768kbps)	
	Wireline Only
	Wireline & Fixed-Wireless
	Fixed-Wireless Only



Source:
ESRI, MapInfo, Arkansas Broadband Providers

For more information, to search for coverage by address on the interactive map, or to use a speed test to check performance go to www.connect-arkansas.org



Connect-Arkansas
An Affiliate of Arkansas Capital Corporation Group

Fall 2011 Coverage Data 2/3/2012 v5.0